



## **WBC Video Service Manual**

Atronic Technical Services is proud to introduce the WBC Video manual. Atronic's Vision of "Great Games Great People" is a vision which is felt throughout the company. We hope that this manual is a strong illustration of how Atronic Technical Services is committed to making this Vision a reality.

The information in this manual includes the most update information available just prior to print. All part numbers and descriptions have been carefully reviewed and checked for accuracy. All drawings and diagrams contain the latest (newest) revision released by Atronic. If earlier revisions of diagrams or drawings are required, please contact your Atronic Technical Services representative.

## **Warranty, Disclaimers and Limitations of Liability.**

ATRONIC WARRANTS THAT FOR A PERIOD OF ONE HUNDRED EIGHTY (180) DAYS FROM DATE OF SHIPMENT, PRODUCT PURCHASED HEREUNDER WILL BE FREE FROM DEFECTS AND IN GOOD WORKING ORDER. ATRONIC SHALL PROVIDE REMEDIAL MAINTENANCE, AND SERVICING FOR THE SPECIFIED WARRANTY PERIOD. BUYER'S SOLE AND EXCLUSIVE REMEDY IN THE EVENT OF DEFECT IS EXPRESSLY LIMITED TO THE RESTORATION OF THE PRODUCT TO GOOD WORKING CONDITION BY ADJUSTMENT, REPAIR OR REPLACEMENT OF DEFECTIVE PARTS, AT ATRONIC'S ELECTION. THERE ARE NO OTHER WARRANTIES, EXPRESS OR IMPLIED, INCLUDING, BUT NOT LIMITED TO, WARRANTIES OF MERCHANTABILITY OR FITNESS FOR A PARTICULAR PURPOSE, NO AFFIRMATION OF FACT, INCLUDING, BUT NOT LIMITED TO, STATEMENTS REGARDING SUITABILITY FOR USE OR PERFORMANCE OF THE PRODUCT SHALL BE DEEMED TO BE A WARRANTY OF ATRONIC FOR ANY PURPOSE. IN NO EVENT SHALL ATRONIC BE LIABLE FOR DIRECT, INDIRECT, SPECIAL, OR CONSEQUENTIAL DAMAGES, INCLUDING WITHOUT LIMITATION LOSS OF PROFITS, ARISING OUT OF ANY BREACH OF THIS AGREEMENT. WHETHER SUCH DAMAGES RESULT FROM MALFUNCTION OF MACHINE HARDWARE AND OR SOFTWARE OR FROM ANY OTHER DEFECTS. PRODUCT PURCHASED MAY CONTAIN SOME RECONDITIONED PARTS, WHICH PARTS COME WITH FULL WARRANTY.

### **WARNING!**

The WBC Video manual is intended to provide QUALIFIED TECHNICAL PERSONNEL ONLY with the information necessary to routinely maintain, service, and repair the Atronic WBC Video Cabinet and components. To avoid personal injury or damage the equipment, do not perform any serving other than that contained in this manual.

### **NOTE!**

Information in this document is subject to change without notice and does not represent a commitment on the part of Atronic. No part of this manual may be reproduced or transmitted in any form or by any means, electronic or mechanical, including photocopying and recording, for any purpose other than the purchaser's personal use without written consent of Atronic.

© Copyright Atronic, 1999. All rights reserved.

#### **Atronic International**

Borsigstr. 26

32312 Luebbecke, Germany

(+49) 5741 273 720 FAX (+49) 5741 273 727

#### **Atronic Americas**

15500 Greenway-Hayden Loop

Scottsdale, Arizona 85260

(+1) 480 922 0707 FAX (+1) 480 922 8877



## Technical Support Telephone numbers

Atronic offers and provides Technical support 24 hours day, 7 days a week. If technical assistance is required during normal business hours contact your local technical services representative at one of the below numbers. If technical assistance is required outside of normal business hours, please contact one of the Atronic Technical Hotline numbers below.

### Technical Support Locations:

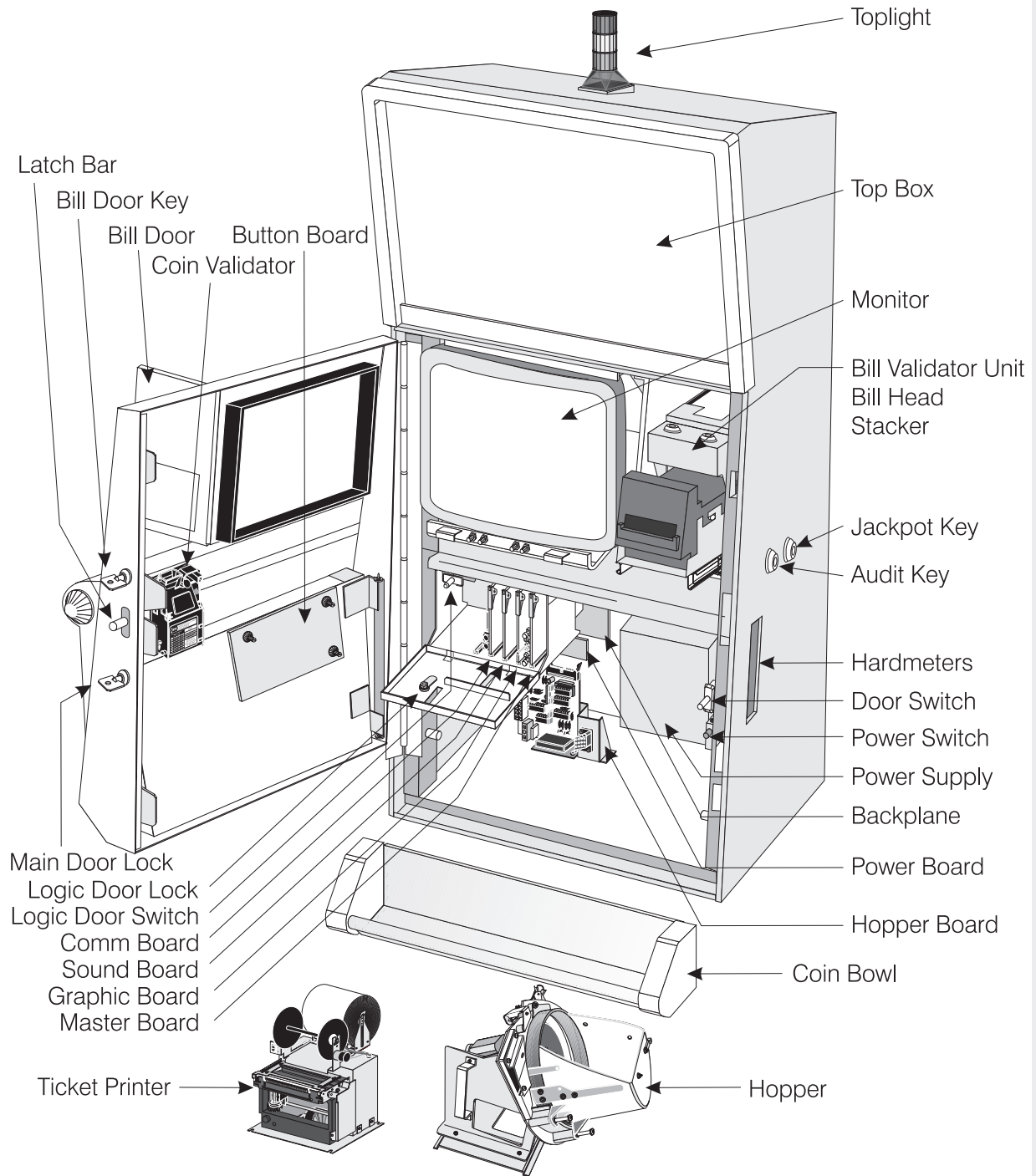
Atronic Germany (International Headquarters)	(+49) 5741 273 720
Atronic Scottsdale (Americas Headquarters)	(+1) 800 864 7670
Atronic Las Vegas	(+1) 702 270 7775
Atronic Reno	(+1) 775 857 2777
Atronic Mississippi	(+1) 228 604 2773
Atronic Peru	(+51) 1446 7778
Atronic South Africa	(+27) 11 466 2723
Atronic Australia	(+61) 3 9686 1226

### Atronic Technical Hotline numbers:

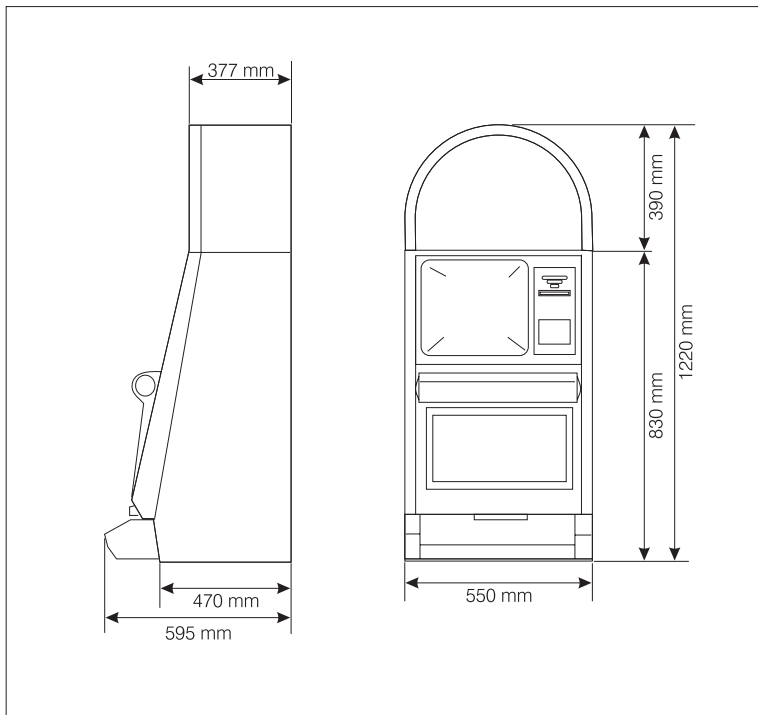
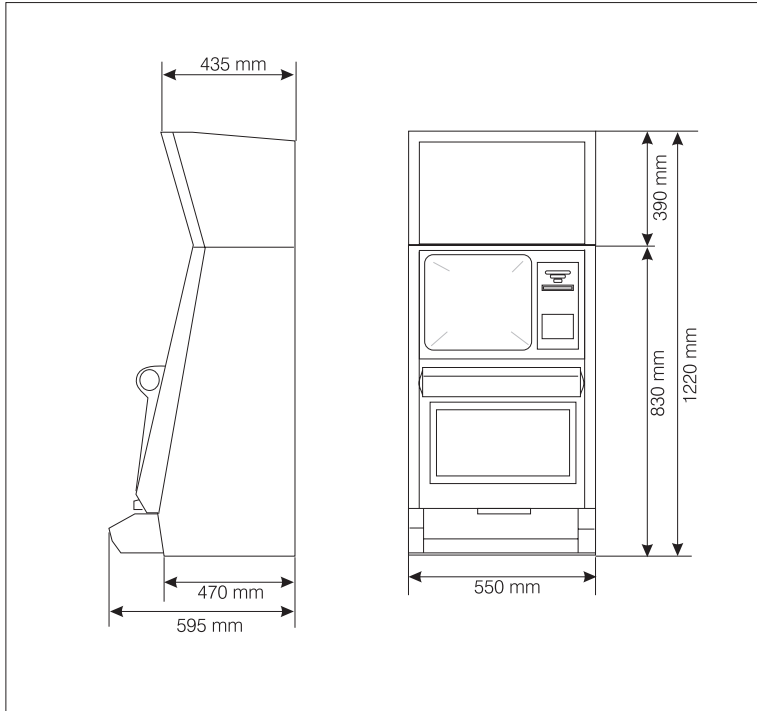
For Technical assistance in North, Central, and South America outside of normal business hours: (+1) 800 559 1391

For Technical assistance in Europe, South Africa, Asia, outside of normal business hours: (+49) 5741 273 777

## Machine Components



## Dimensions



### Cabinet "Cashline" Square Top

Weight: approx 100 Kg  
 Height: 1220 mm  
 Width: 550 mm  
 Depth: 595 mm

### Cabinet "Cashline" Round Top

Weight: approx 100 Kg  
 Height: 1220 mm  
 Width: 550 mm  
 Depth: 595 mm

## Technical data

Voltage:	<b>220V-240V 2.0A 50Hz</b> <b>100V-120V 4.0A 60Hz</b>
Power consumption:	<b>Idle mode: approx 185W</b> <b>Payout mode: approx 200W</b>
Power supply:	<b>+ 24V/4A</b> <b>+ 12V/4A</b> <b>- 12V/0.3A</b> <b>+ 5V/10A</b>
Power Supply Fuse:	<b>F 5A/250V</b>
Monitor Fuse:	<b>T 3A/250V</b>
Powerboard Fuse:	<b>T 2A/250V</b>
Backplane F1: + 5V	<b>T 5A/250V</b>
Backplane F2: + 12V	<b>T 5A/250V</b>
Backplane F3: - 12V	<b>T 0.315A/250V</b>
Backplane F4: + 24V	<b>T 3.15A/250V</b>
Fluoro	<b>15W 438 mm</b>
Button Lamps, small	<b>14V/1W</b>
Button Lamps, large	<b>14V/2W</b>
Operating Temperature:	<b>0°C - 45°C</b>
Operating Humidity:	<b>0% to 85%</b>
Combustible Weight:	<b>&lt;9Kg</b>

## Electrical specifications

Primary voltage  
The correct voltage setting will be selected by the Factory.

Secondary voltage

Primary Fuses

Secondary Fuses

Lamps

## Environmental specifications

Suggested limits

**Transport damage** should be noted and witnessed by the freight forwarder. The manufacturer accepts no responsibility for transport damage.

**Before the machine** is connected to the power source check the voltage specifications with the label on the side of the machine.

The machine may only be operated in **dry conditions** and must be connected to an **earthed power outlet**.

**Note !**

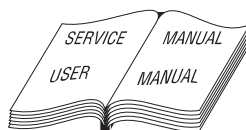
**The Power cable must be disconnected from the Power Outlet before the machine is free from Electrical current.**

**Before installation** check that all connectors are seated correctly. False connections can cause irreparable damage which is not covered by warranty.

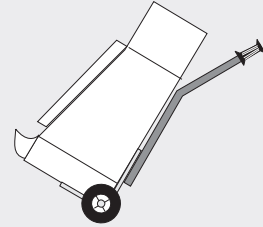
Before working on the machine **disconnect** the Power cable from the Power Outlet.

- **Electronic assemblies** should only be changed with the **Power switched off.**
- Use only **Atronic original parts.**
- Repairs should be carried out by **Qualified Service Personnel only.**

**Before operating the machine** read the **Service Manual** carefully.



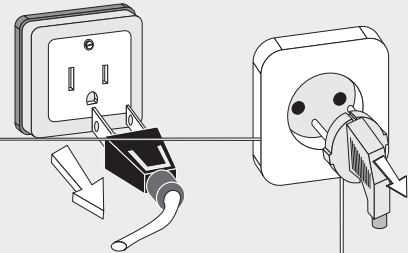
**Transport Damage**



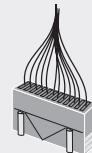
**Voltage Specifications**



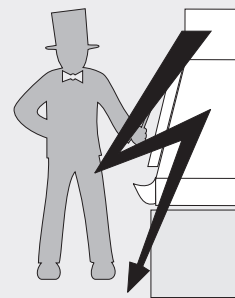
**Outlet**



**Plug Connector**



**Working on the Machine**



## Service

This section can be carried out by **Trained Casino Personnel**.

### Warning !

When the Front Door is opened switch the machine off, using the Red Push Button Switch, before doing any work on the machine.

### Attention !

Even when the machine is switched off, there is still an **electrical current** in the machine. Do not do any unauthorised work on the machine.

The Power cable **must** be disconnected from the Power Outlet before the machine is free from **electrical current**.

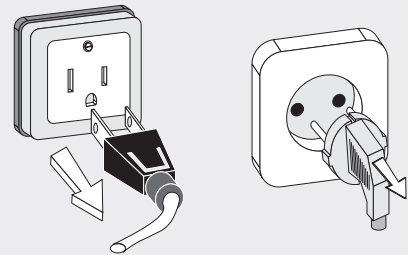
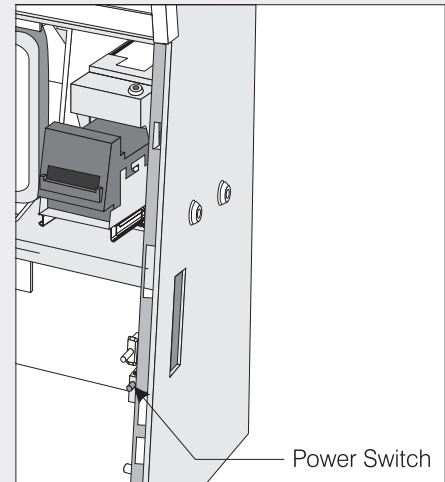
The X-rays which develop in this machine are sufficiently shielded through the Cathode-ray tube's own shielding. Max 24-24,5kV, Beamcurrent max 630mA. This corresponds with Paragraph 5 of the German X-ray Orders from 1987

### Hopper Refill

- Open Front Door and switch Power **Off**, using the Red push button.
- Depress the locking spring and slide the Hopper forward.
- Fill the Hopper with the correct amount of Coins/Tokens. Check that no Coins/Tokens have fallen into the Cabinet.
- Slide the Hopper back into the machine.
- Switch Power **On** and close the Front Door.

### Stacker Exchange/Removal

- Open Front Door and switch Power **Off**, using the Red push button.
- Slide Acceptor enclosure forwards until the Stacker can be accessed.
- Unlock the safety Bracket, and exchange/remove Stacker.
- Switch Power **On** and close the Front Door.





## Machine Installation

This section should be carried out by **Qualified Technical Service Personnel only.**

Depending on the machines configuration and the local circumstances, several tasks have to be carried out before operating the machine.

Go through the list below, some tasks are explained on the following pages.

- Inspect machines for transport damage.
- Check machines for the correct Paytable, Glasses, Hardware configuration and the Software EPROM's are correctly installed on the PCBs.
- Prepare the base by drilling the holes, using the Atronic drilling template, for the mounting bolts.
- Place and mount machine on the base.
- Run the power cable into the base. Do not connect power to the machine.
- Install Toplight.
- Replace shipping locks with Casino specific locks.
- Install and connect Online/Accounting system.
- Check that all internal and external connections are seated correctly.
- Prepare Coin Comparitor and Hopper.
- Apply power to the machine.
- Execute basic machine setup.
- Configure game.
- Test Bill and Coin handling.

## Machine Installation cont.

**Warning !** When power is connected and the Front Door is opened and the machine is switched on the single components of the machine are electrically charged.

The X-rays which develop in this machine are sufficiently shielded through the Cathode-ray tube's own shielding. Max 24-24,5kV, Beamcurrent max 630mA. This corresponds with Paragraph 5 of the German X-ray Orders from 1987

### Mount machine on base

- 4 x M10 hex-head bolts
- 4 x lock washer
- 4 x flat washer
- 4 x M10 hex-nut

### Install Toplight

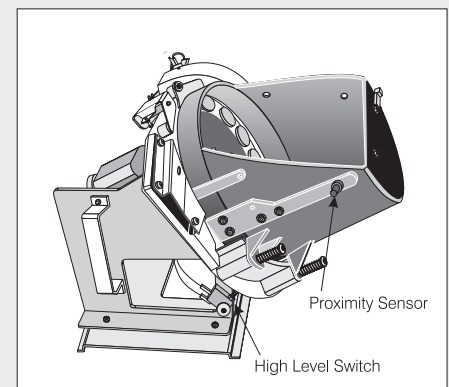
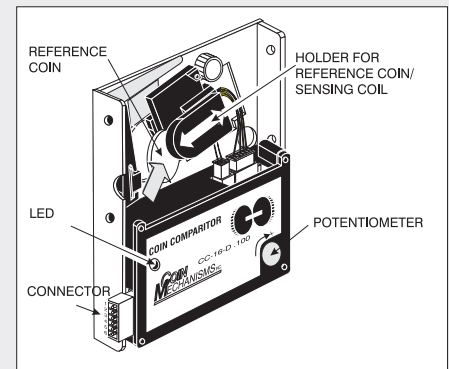
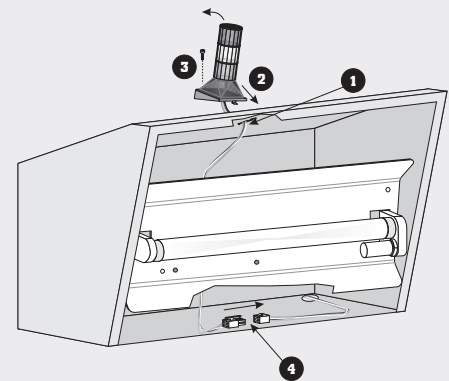
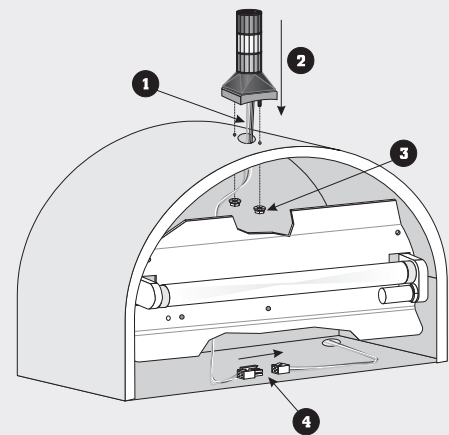
- Remove the Top Glass.
- Remove Reflector Panel from the Upper Housing by loosening the 4 screws and disconnect the voltage cables.
- Thread connector and harness through the opening on top of the Upper Housing.
- Fix the Toplight onto the Upper Housing and secure with one Nut for the Square Top and two Nuts for the Round and Low Top.
- Fit the Toplight molax connectors together.

### Prepare Coin Comparitor CC16/CC40

- Remove transport Token.
- Insert Casino Coin/Token.
- Fine tune comparitor.

### Prepare Hopper

- Fill the Hopper with the correct amount of Coins/Tokens.
- Set High Level Switch where applicable.



## Machine Installation cont.

### Apply power

- The LED's on the Master Board (they signify correct voltages) should be lit.
- The Monitor powers up.

### Execute basic machine setup

- Initial Setup.
- Select Paytable.
- PC-Setup.
- DIP-Switch settings.

### Configure game

- Enable and configure game features in the service menu under MENU SETUP.

### Test Bill and Coin handling

- Check Coin channeling optics.
- Test Bill Validator acceptance.
- Test Hopper payout.



**See section "software"**



**See service menu in section "operating"**



**See service menu in section "operating"**