

SR3 stabiliser ball replacement



This document is the copyright of Money Controls Ltd and may not be reproduced in part or in total by any means, electronic or otherwise, without the written permission of Money Controls Ltd. Money Controls Ltd does not accept liability for any errors or omissions contained within this document. Money Controls Ltd shall not incur any penalties arising out of the adherence to, interpretation of, or reliance on, this standard. Money Controls Ltd will provide full support for this product when used as described within this document. Use in applications not covered or outside the scope of this document may not be supported. Money Controls Ltd. reserves the right to amend, improve or change the product referred to within this document or the document itself at any time.

Contents

1. SR3 Stabiliser ball replacement	3
1.1 Tools required.....	3
1.2 Locating the accept gate cover screw.....	3
1.3 Replacing the ball	4
1.4 Re-assemble	4
2. SR3 Stabiliser ball builds.....	5

Figures

Fig.1 Locate screw.....	3
Fig.2 Remove screw (2)	3
Fig.3 Removed gate.....	3
Fig.4 Plastic Ball	3
Fig.5 Ball insertion.....	4
Fig.6 Ball in lower hole	4
Fig.7 Re-assemble	4

1. SR3 Stabiliser ball replacement

1.1 Tools required

- Phillips screwdriver
- Replacement plastic ball.

1.2 Locating the accept gate cover screw

Locate the screw by opening the accept gate of the SR3 so that you can hold it with one hand. (See *fig.1*) Using a Phillips screwdriver, remove the screw (See *fig.2*)

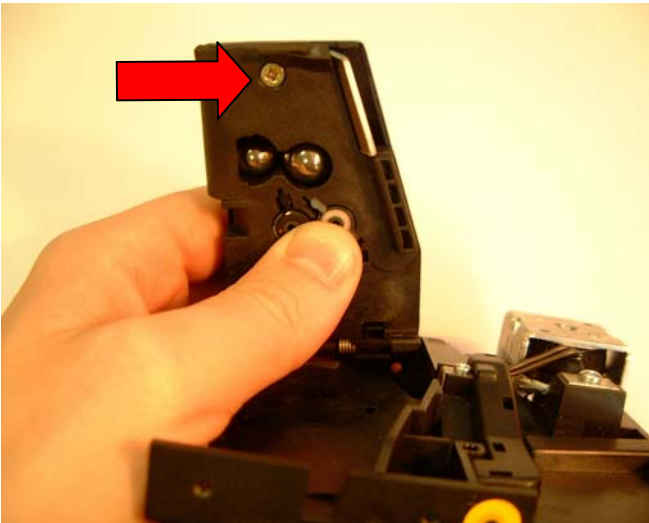


Fig.1 Locate screw



Fig.2 Remove screw (2)

Once the screw is removed, open the gate cover and remove the steel ball, if there are 2 balls remove them both (*fig.3*)

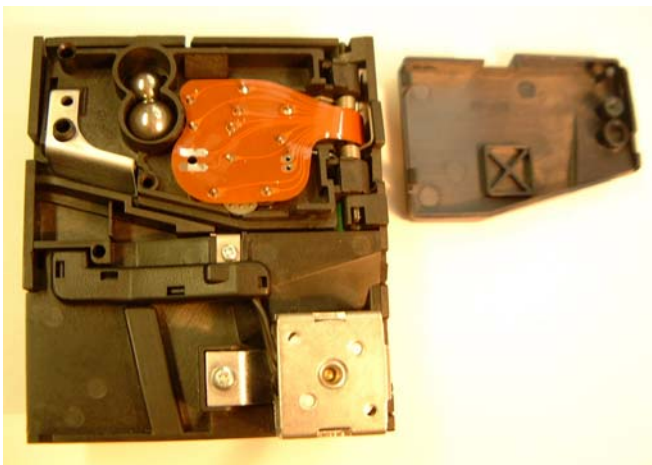


Fig.3 Removed gate



Fig.4 Plastic Ball

1.3 Replacing the ball

Insert the plastic ball into the lower hole (See fig.5 & 6)



Fig.5 Ball insertion

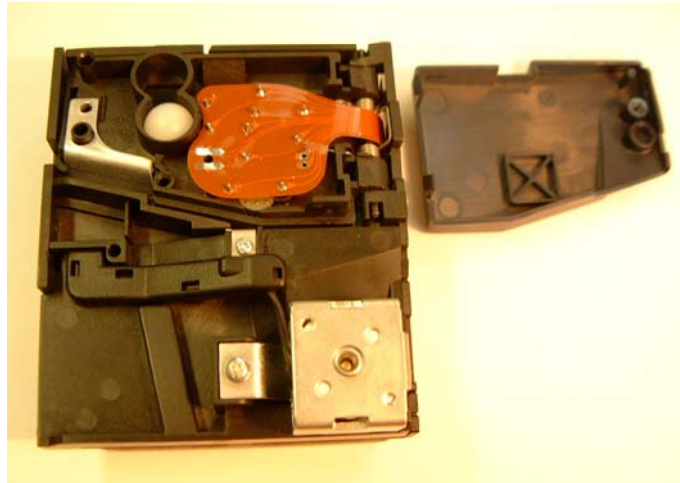


Fig.6 Ball in lower hole

1.4 Re-assemble

Replace the screw to complete the change.



Fig.7 Re-assemble

2. SR3 Stabiliser ball builds

BUILD	No. OF BALLS TO BE FITTED
Standard body	2 x plastic
Frontplate	1 x plastic (bottom position)
Mini frontplate	2 x plastic
Reverse	2 x plastic