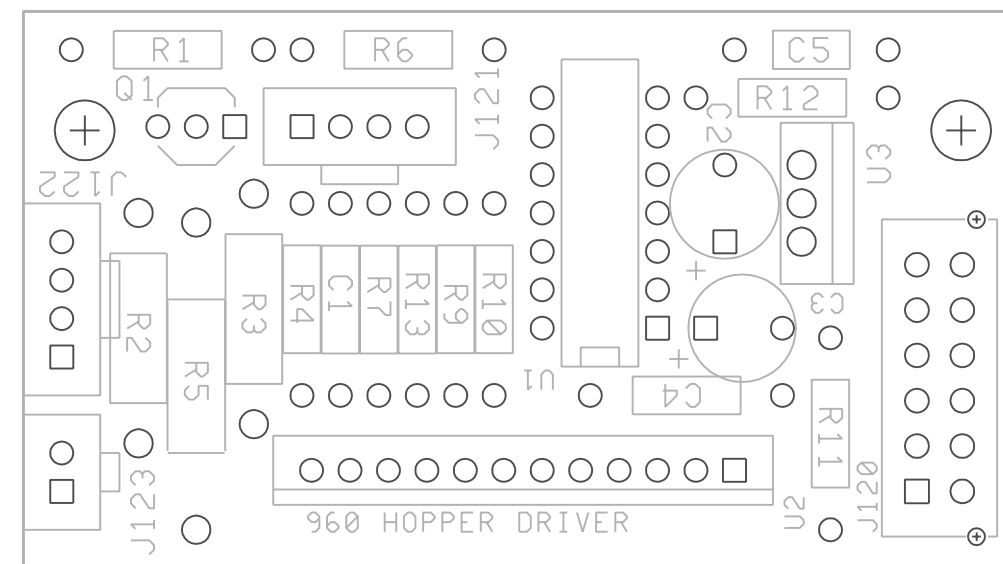
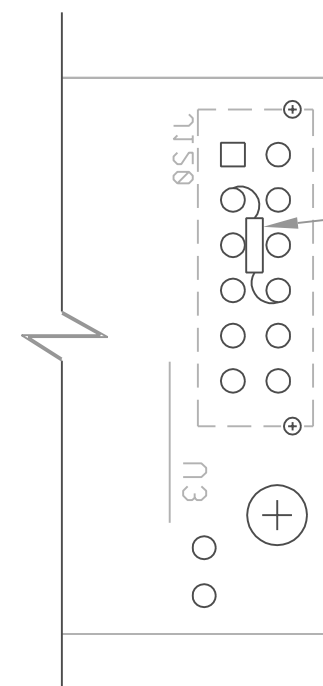


Component	Description	Part Number
REF SCHEMATIC	BOARD, PC, HOPPER DRIVER, REV A	754 265 15
REF RAW	BOARD, PC, HOPPER DRIVER, REV B	754 265 33
REF DRAWING	BOARD, PC, HOPPER DRIVER, REV A	754 265 55
REF SUB ASSEMBLY/LIST	BOARD, PC, HOPPER DRIVER, REV A	754 265 45
C1	CAPACITOR, CERAMIC, 1000PF, 20%, 50V, AX, T/R	152 086 91
C2	CAPACITOR, ELECTRO, RAD, 22MF, 25V, T/R	156 097 91
C3	CAPACITOR, ELECTRO, RAD, 33MF, 50V, 6.3X11	156 074 90
C4	CAPACITOR, CERAMIC, 22UF, +80-20%, 50V, AX, T/R	152 101 91
C5	CAPACITOR, CERAMIC, .1UF, 50V, +80-20%, AX, T/R	152 078 91
J120	CONNECTOR, HDR, 6X2 PIN, STR, 3.0 MM	211 317 90
J121,122	CONNECTOR, HDR, 4 PIN, STR SHROUD, SL	211 050 90
J123	CONNECTOR, HDR, 2 PIN, STR SHROUD, SL	211 049 90
Q1	TRANSISTOR, NPN, GEN PURP AMP, 2N3904	481 017 90
R1	RESISTOR, CF, 6.8K OHM, .25W, T/R	474 037 91
R2,3	RESISTOR, COMP, 430 OHM, 1/2W	471 116 90
R4	RESISTOR, MF, 33.2K OHM, .25W, 1%, T/R	476 080 91
R5	RESISTOR, PWR, 0.1 OHM, 1W, 5%, METOX, T/R	473 048 91
R6,9,10	RESISTOR, CF, 47K OHM, .25W, T/R	474 029 91
R7	RESISTOR, CF, 62K OHM, .25W, T/R	474 007 91
R11-13	RESISTOR, CF, 75K OHM, .25W, T/R	474 196 91
R14	RESISTOR, MF, 10K, 5%, 1/8W	474 281 90
U1	IC, GATE, QUAD, SCHMIDT 4093B	320 233 90
U2	IC, INTERFACE, FULBRDG, PWM, A3951SW	321 044 90
U3	VREG, +5.0V/1.5A, TO220, LM7805	488 012 90



PRIMARY SIDE



SECONDARY SIDE

10. ADD R14 BETWEEN PINS 3 AND 8 OF J120 ON THE SOLDER SIDE OF THE PCB.