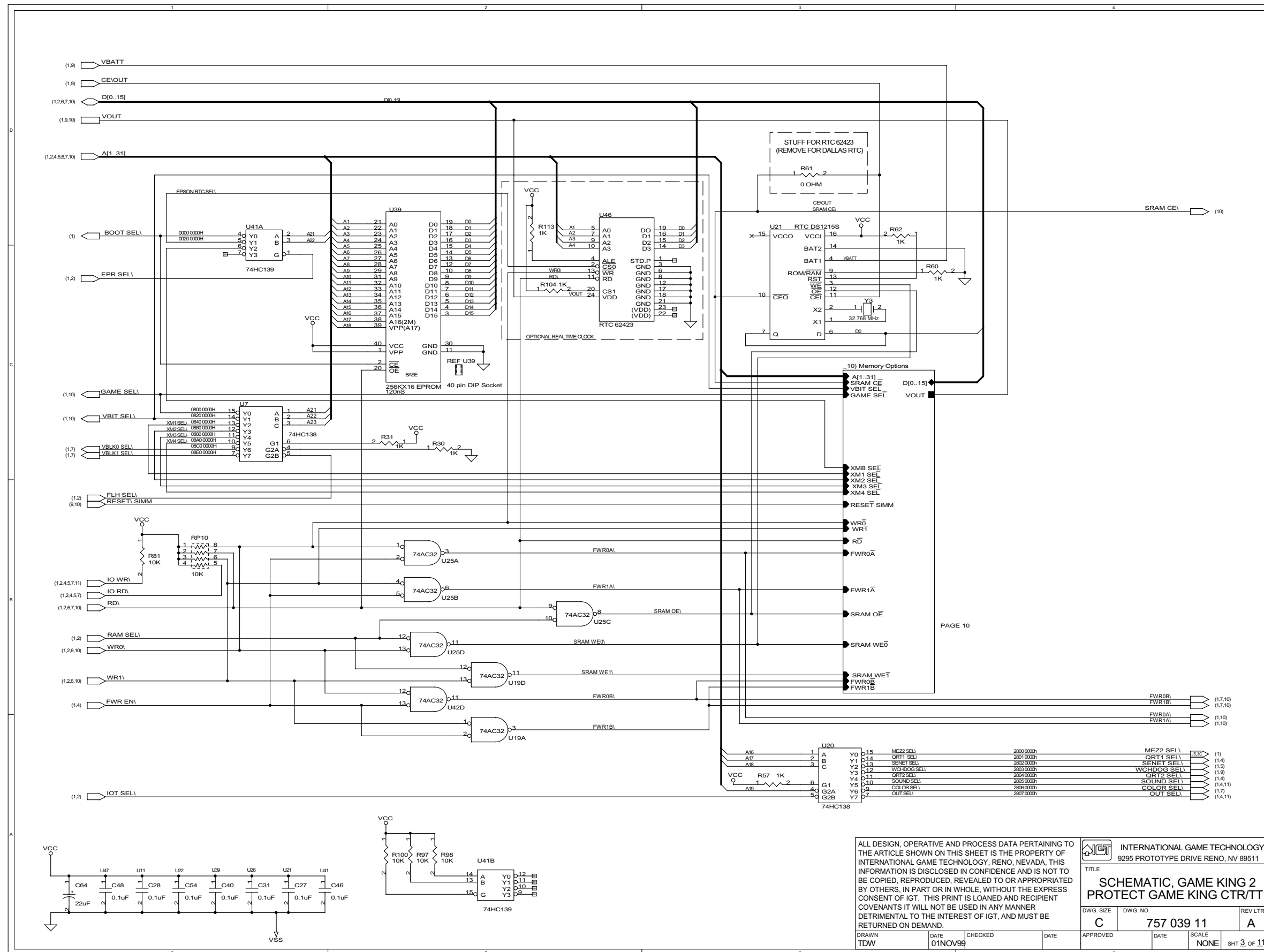


ALL DESIGN, OPERATIVE AND PROCESS DATA PERTAINING TO THE ARTICLE SHOWN ON THIS SHEET IS THE PROPERTY OF INTERNATIONAL GAME TECHNOLOGY, RENO, NEVADA, THIS INFORMATION IS DISCLOSED IN CONFIDENCE AND IS NOT TO BE COPIED, REPRODUCED, REVEALED TO OR APPROPRIATED BY OTHERS, IN PART OR IN WHOLE, WITHOUT THE EXPRESS CONSENT OF IGT. THIS PRINT IS LOANED AND RECIPIENT COVENANTS IT WILL NOT BE USED IN ANY MANNER DETRIMENTAL TO THE INTEREST OF IGT, AND MUST BE RETURNED ON DEMAND.

INTERNATIONAL GAME TECHNOLOGY  
 9235 PROTOTYPE DRIVE RENO, NV 89511

TITLE  
**SCHEMATIC, GAME KING 2  
 PROTECT GAME KING CTR/TT**

DWG. SIZE <b>C</b>	DWG. NO. <b>757 039 11</b>	REV LTR <b>A</b>
DRAWN <b>TDW</b>	DATE <b>01NOV98</b>	CHECKED
APPROVED	DATE	SCALE <b>NONE</b>
		SHT 2 of 11

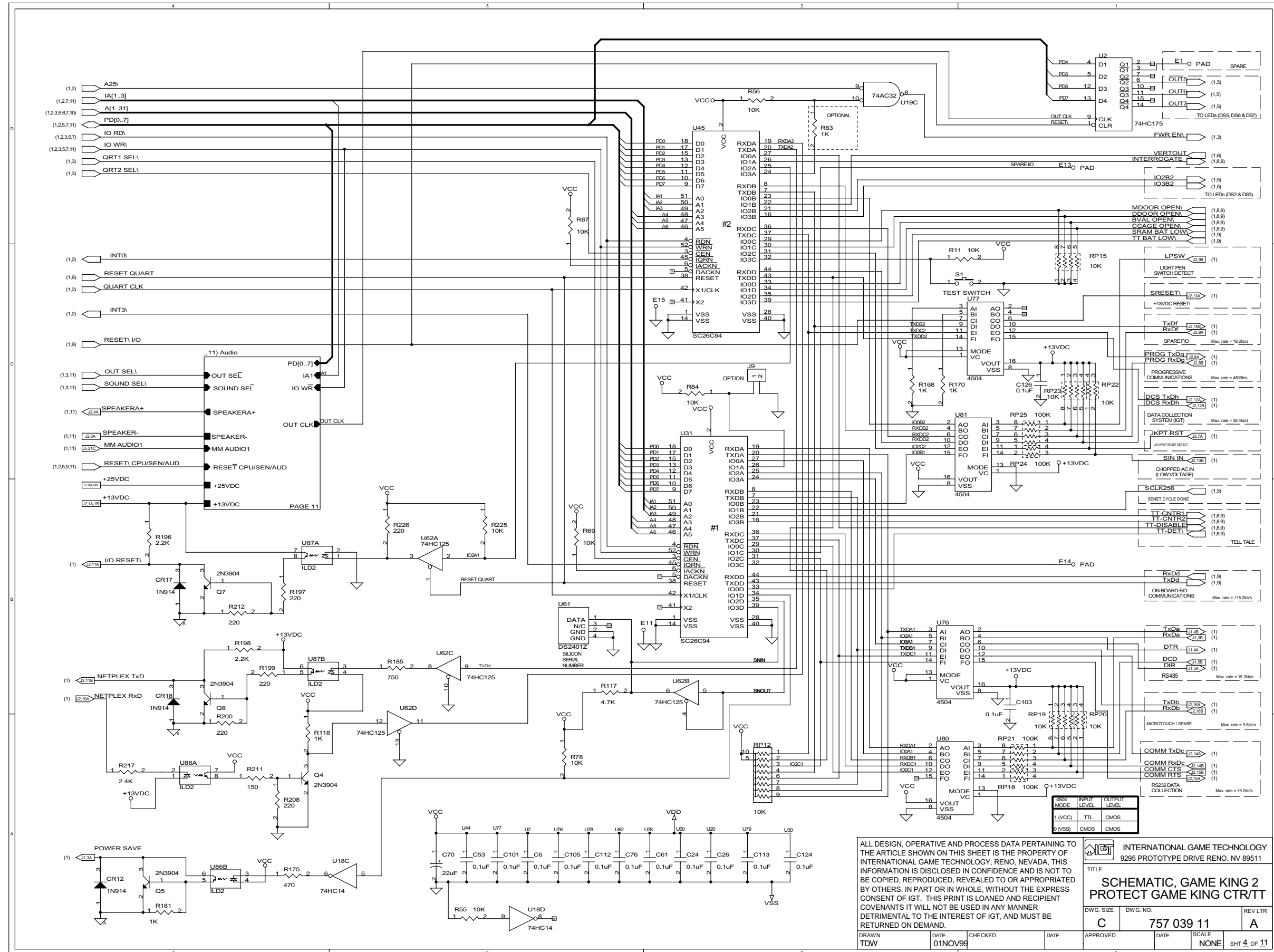


ALL DESIGN, OPERATIVE AND PROCESS DATA PERTAINING TO THE ARTICLE SHOWN ON THIS SHEET IS THE PROPERTY OF INTERNATIONAL GAME TECHNOLOGY, RENO, NEVADA. THIS INFORMATION IS DISCLOSED IN CONFIDENCE AND IS NOT TO BE COPIED, REPRODUCED, REVEALED TO OR APPROPRIATED BY OTHERS, IN PART OR IN WHOLE, WITHOUT THE EXPRESS CONSENT OF IGT. THIS PRINT IS LOANED AND RECIPIENT COVENANTS IT WILL NOT BE USED IN ANY MANNER DETRIMENTAL TO THE INTEREST OF IGT, AND MUST BE RETURNED ON DEMAND.

INTERNATIONAL GAME TECHNOLOGY  
9295 PROTOTYPE DRIVE RENO, NV 89511

TITLE  
**SCHEMATIC, GAME KING 2  
PROTECT GAME KING CTR/TT**

DWG. SIZE <b>C</b>	DWG. NO. <b>757 039 11</b>	REV LTR <b>A</b>
DRAWN <b>TDW</b>	DATE <b>01NOV99</b>	CHECKED
APPROVED	DATE	SCALE <b>NONE</b>
		SHT 3 OF 11

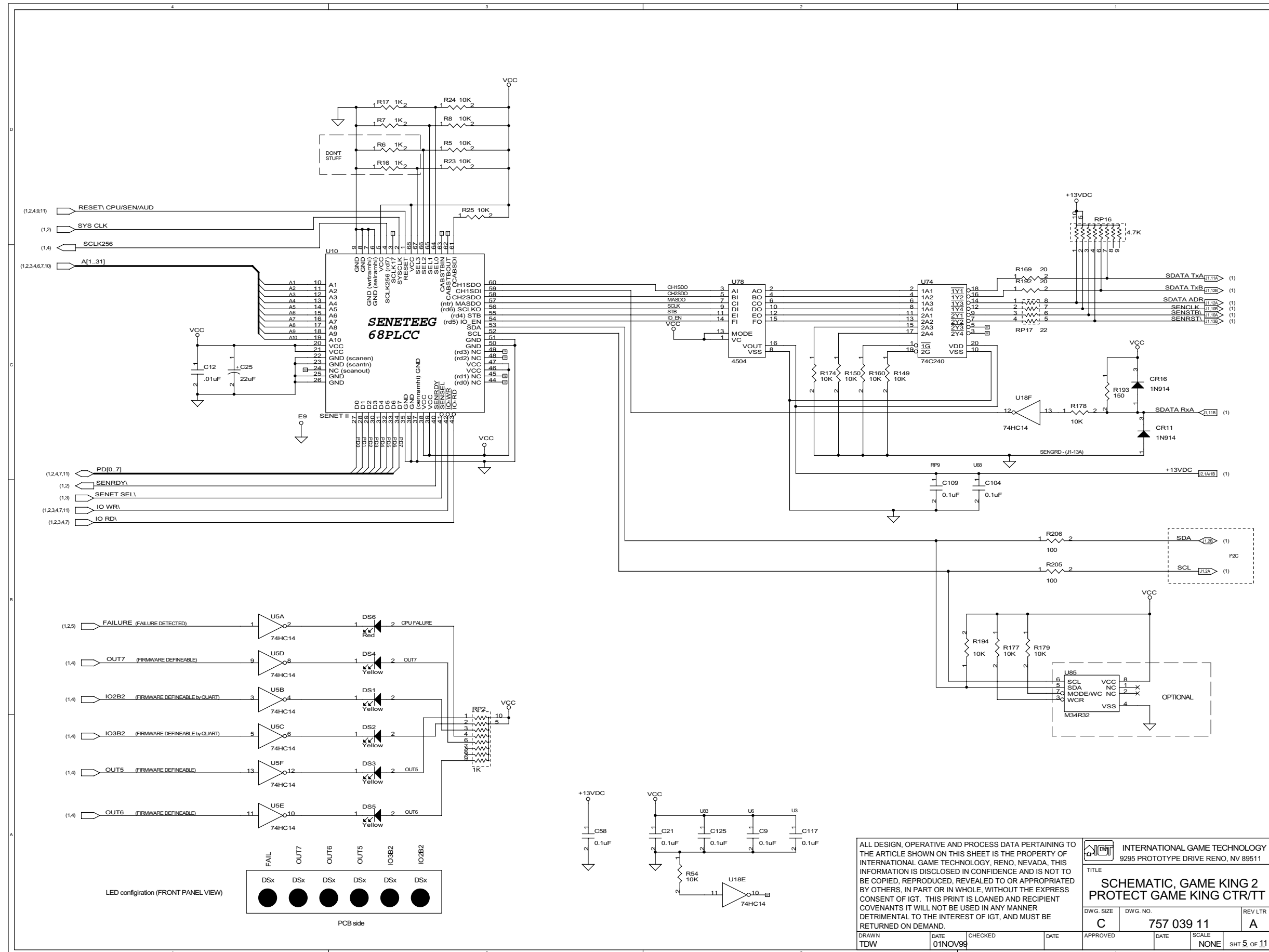


ALL DESIGN, OPERATIVE AND PROCESS DATA PERTAINING TO THE ARTICLE SHOWN ON THIS SHEET IS THE PROPERTY OF INTERNATIONAL GAME TECHNOLOGY, RENO, NEVADA, THIS INFORMATION IS DISCLOSED IN CONFIDENCE AND IS NOT TO BE COPIED, REPRODUCED, REVEALED TO OR APPROPRIATED BY OTHERS, IN PART OR IN WHOLE, WITHOUT THE EXPRESS CONSENT OF IGT. THIS PRINT IS LOANED AND RECIPIENT COVENANTS IT WILL NOT BE USED IN ANY MANNER DETRIMENTAL TO THE INTEREST OF IGT, AND MUST BE RETURNED ON DEMAND.

INTERNATIONAL GAME TECHNOLOGY  
9295 PROTOTYPE DRIVE RENO, NV 89511

TITLE  
**SCHEMATIC, GAME KING 2 PROTECT GAME KING CTR/TT**

DWG. SIZE	DWG. NO.	REV LTR
C	757 039 11	A
DRAWN	DATE	CHECKED
TDW	01NOV99	
APPROVED	DATE	SCALE
		NONE
		SHT 4 of 11



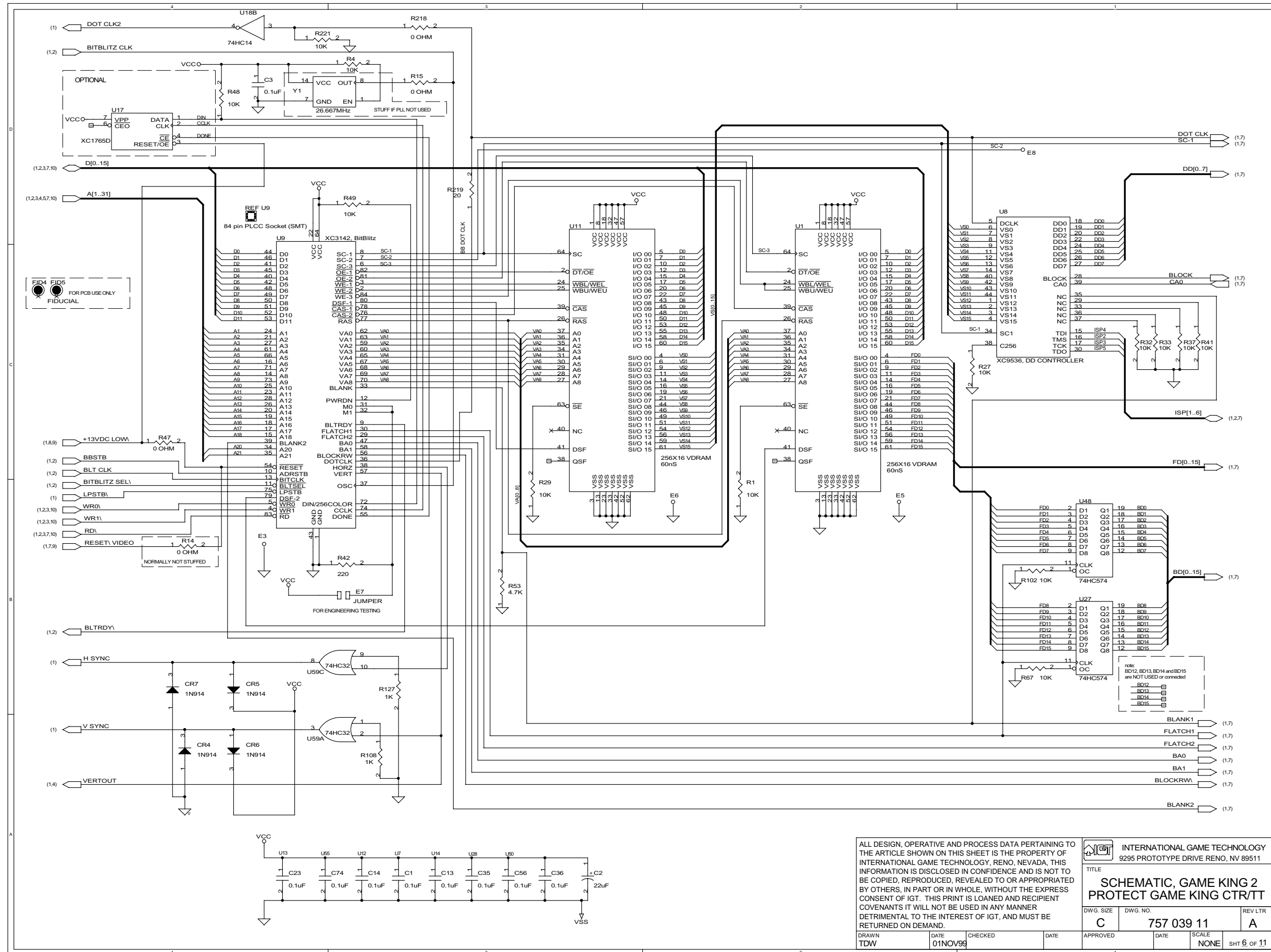
ALL DESIGN, OPERATIVE AND PROCESS DATA PERTAINING TO THE ARTICLE SHOWN ON THIS SHEET IS THE PROPERTY OF INTERNATIONAL GAME TECHNOLOGY, RENO, NEVADA, THIS INFORMATION IS DISCLOSED IN CONFIDENCE AND IS NOT TO BE COPIED, REPRODUCED, REVEALED TO OR APPROPRIATED BY OTHERS, IN PART OR IN WHOLE, WITHOUT THE EXPRESS CONSENT OF IGT. THIS PRINT IS LOANED AND RECIPIENT COVENANTS IT WILL NOT BE USED IN ANY MANNER DETRIMENTAL TO THE INTEREST OF IGT, AND MUST BE RETURNED ON DEMAND.

DRAWN TDW		DATE 01NOV99	CHECKED	DATE	APPROVED		DATE	SCALE NONE	SHT 5 OF 11
--------------	--	-----------------	---------	------	----------	--	------	---------------	-------------

INTERNATIONAL GAME TECHNOLOGY  
9295 PROTOTYPE DRIVE RENO, NV 89511

TITLE  
**SCHEMATIC, GAME KING 2 PROTECT GAME KING CTR/TT**

DWG. SIZE C	DWG. NO. 757 039 11	REV/LTR A
----------------	------------------------	--------------

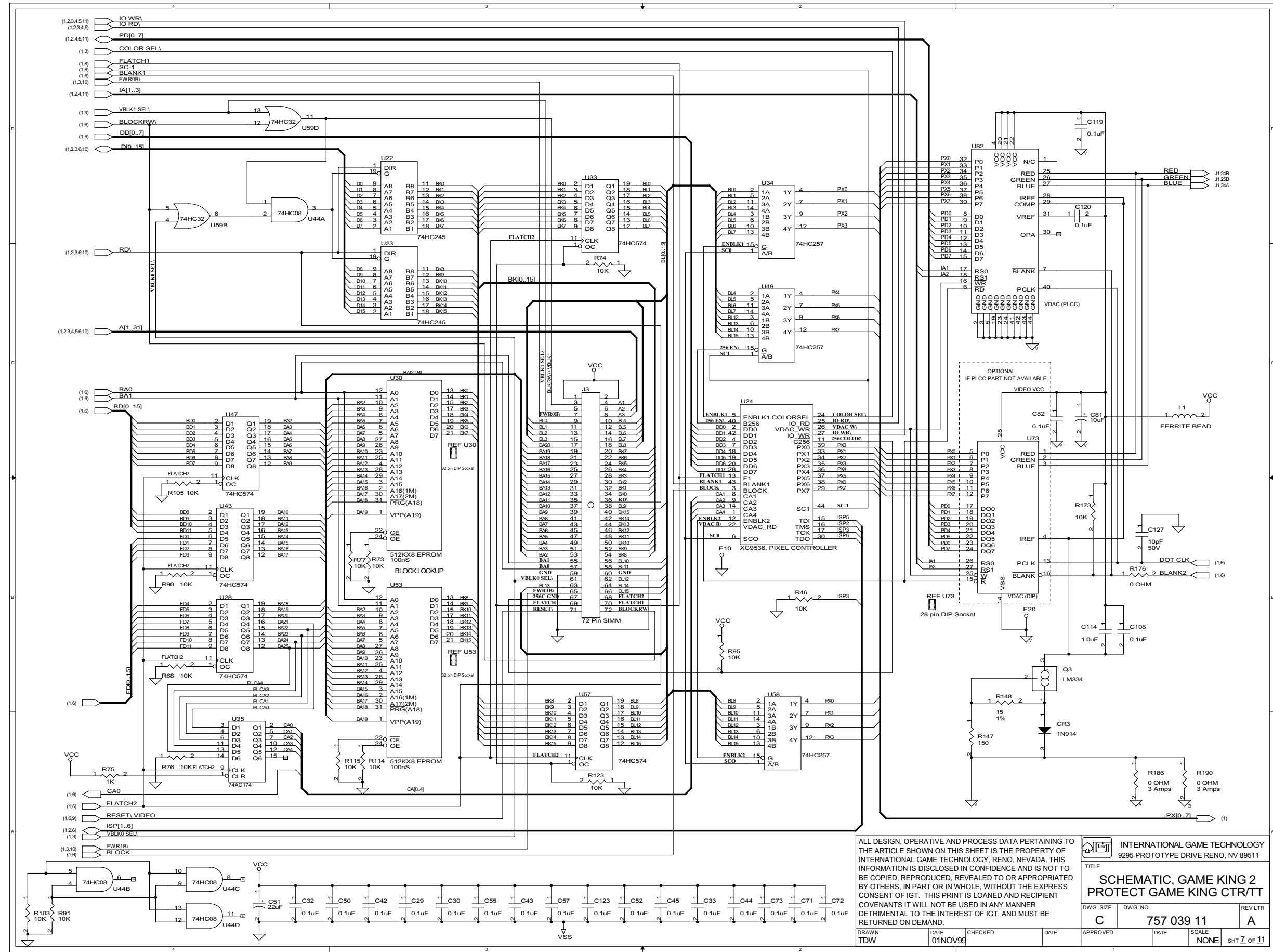


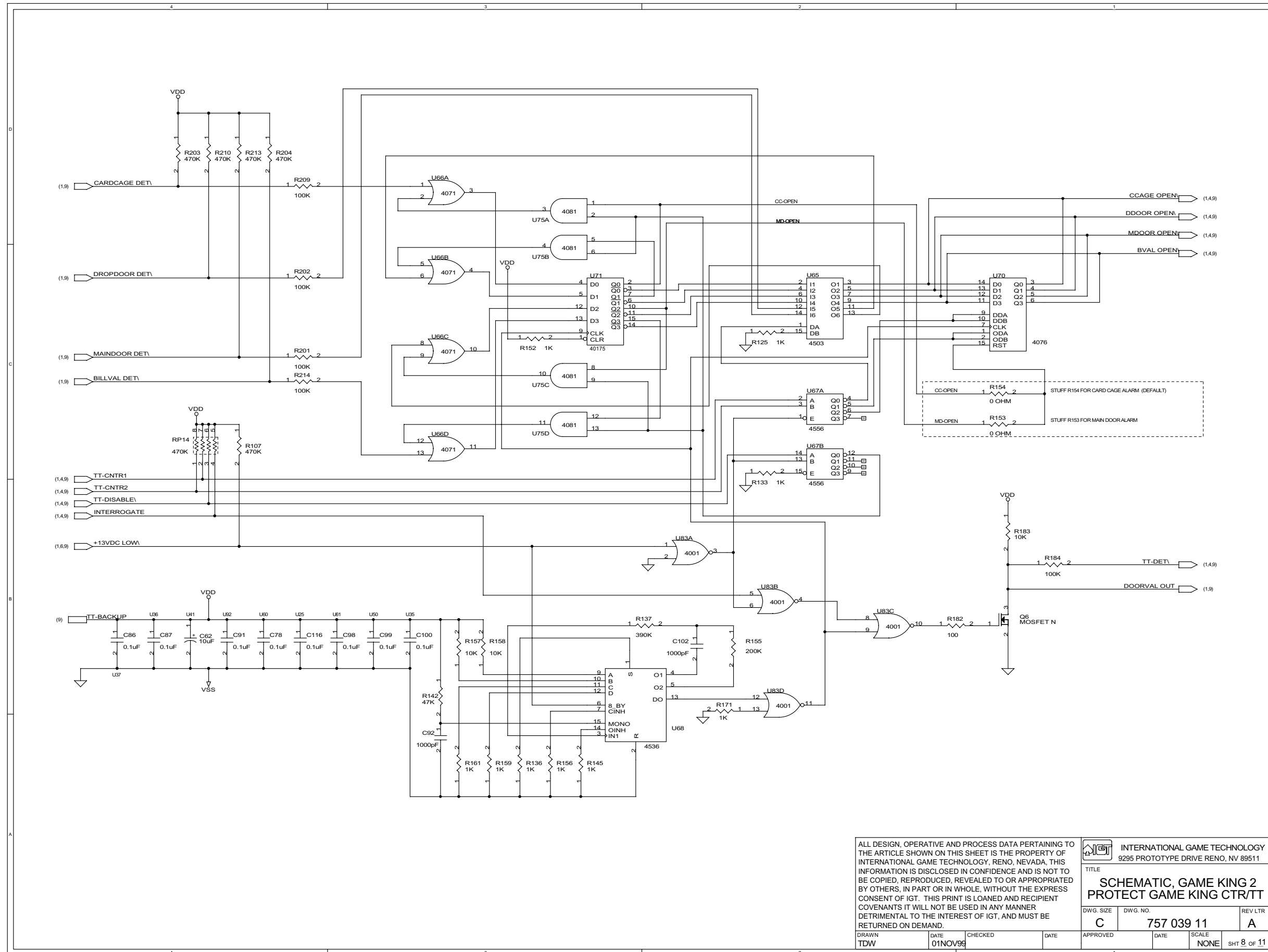
ALL DESIGN, OPERATIVE AND PROCESS DATA PERTAINING TO THE ARTICLE SHOWN ON THIS SHEET IS THE PROPERTY OF INTERNATIONAL GAME TECHNOLOGY, RENO, NEVADA, THIS INFORMATION IS DISCLOSED IN CONFIDENCE AND IS NOT TO BE COPIED, REPRODUCED, REVEALED TO OR APPROPRIATED BY OTHERS, IN PART OR IN WHOLE, WITHOUT THE EXPRESS CONSENT OF IGT. THIS PRINT IS LOANED AND RECIPIENT COVENANTS IT WILL NOT BE USED IN ANY MANNER DETRIMENTAL TO THE INTEREST OF IGT, AND MUST BE RETURNED ON DEMAND.

INTERNATIONAL GAME TECHNOLOGY  
9295 PROTOTYPE DRIVE RENO, NV 89511

TITLE  
**SCHEMATIC, GAME KING 2  
PROTECT GAME KING CTR/TT**

DWG. SIZE <b>C</b>	DWG. NO. <b>757 039 11</b>	REV LTR <b>A</b>
DRAWN <b>TDW</b>	DATE <b>01NOV99</b>	CHECKED
APPROVED	DATE	SCALE <b>NONE</b>
		SHT <b>6</b> OF <b>11</b>



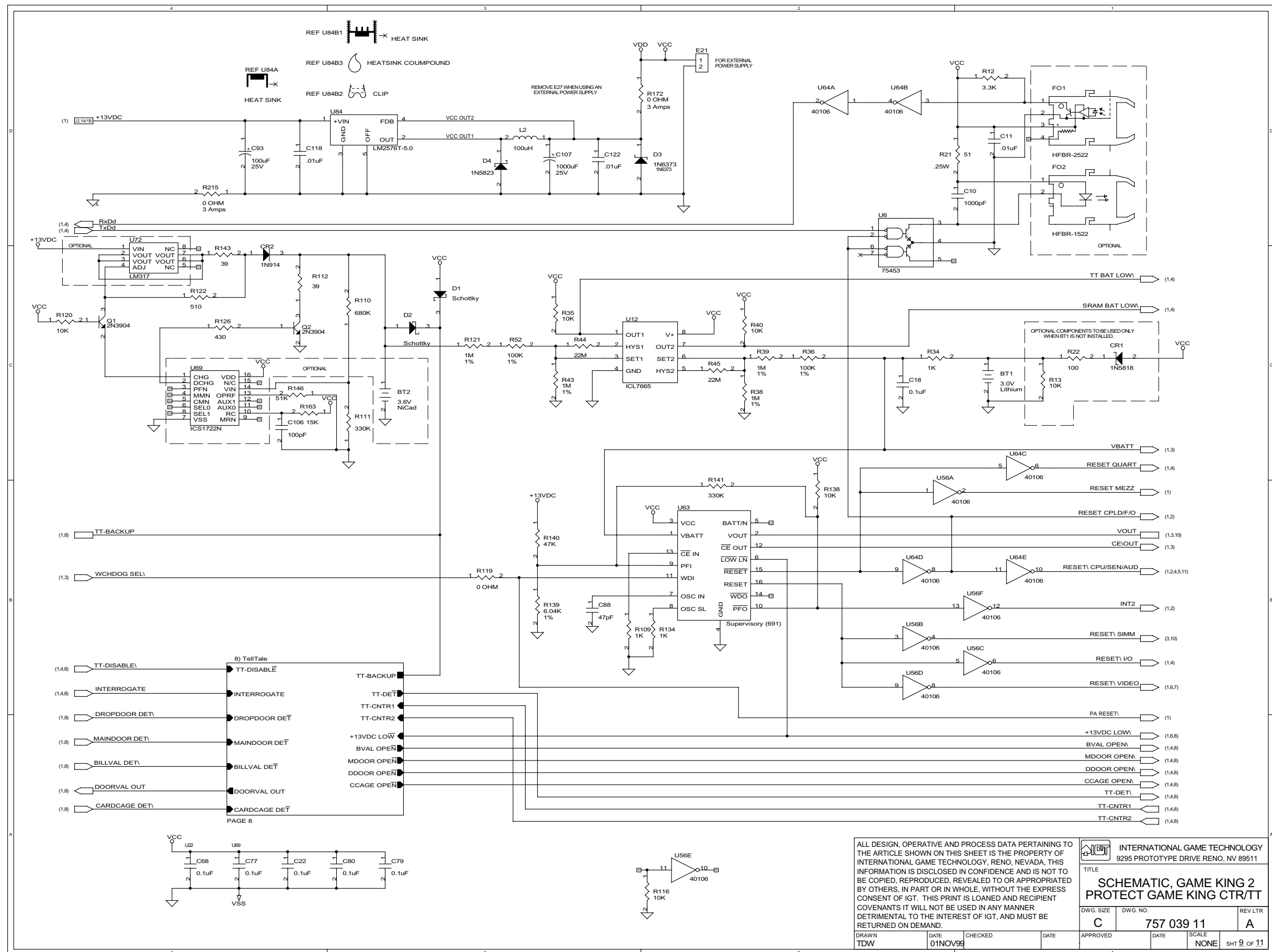


DWG NO. 757 039 11

ALL DESIGN, OPERATIVE AND PROCESS DATA PERTAINING TO THE ARTICLE SHOWN ON THIS SHEET IS THE PROPERTY OF INTERNATIONAL GAME TECHNOLOGY, RENO, NEVADA. THIS INFORMATION IS DISCLOSED IN CONFIDENCE AND IS NOT TO BE COPIED, REPRODUCED, REVEALED TO OR APPROPRIATED BY OTHERS, IN PART OR IN WHOLE, WITHOUT THE EXPRESS CONSENT OF IGT. THIS PRINT IS LOANED AND RECIPIENT COVENANTS IT WILL NOT BE USED IN ANY MANNER DETRIMENTAL TO THE INTEREST OF IGT, AND MUST BE RETURNED ON DEMAND.

INTERNATIONAL GAME TECHNOLOGY 9295 PROTOTYPE DRIVE RENO, NV 89511	
TITLE <b>SCHEMATIC, GAME KING 2 PROTECT GAME KING CTR/TT</b>	
DWG. SIZE <b>C</b>	DWG. NO. <b>757 039 11</b>
REV/LTR <b>A</b>	SCALE <b>NONE</b>
DATE <b>01NOV99</b>	DATE
CHECKED	DATE
APPROVED	DATE
DRAWN <b>TDW</b>	SHT <b>8</b> OF <b>11</b>





ALL DESIGN, OPERATIVE AND PROCESS DATA PERTAINING TO THE ARTICLE SHOWN ON THIS SHEET IS THE PROPERTY OF INTERNATIONAL GAME TECHNOLOGY, RENO, NEVADA. THIS INFORMATION IS DISCLOSED IN CONFIDENCE AND IS NOT TO BE COPIED, REPRODUCED, REVEALED TO OR APPROPRIATED BY OTHERS, IN PART OR IN WHOLE, WITHOUT THE EXPRESS CONSENT OF IGT. THIS PRINT IS LOANED AND RECIPIENT COVENANTS IT WILL NOT BE USED IN ANY MANNER DETRIMENTAL TO THE INTEREST OF IGT, AND MUST BE RETURNED ON DEMAND.

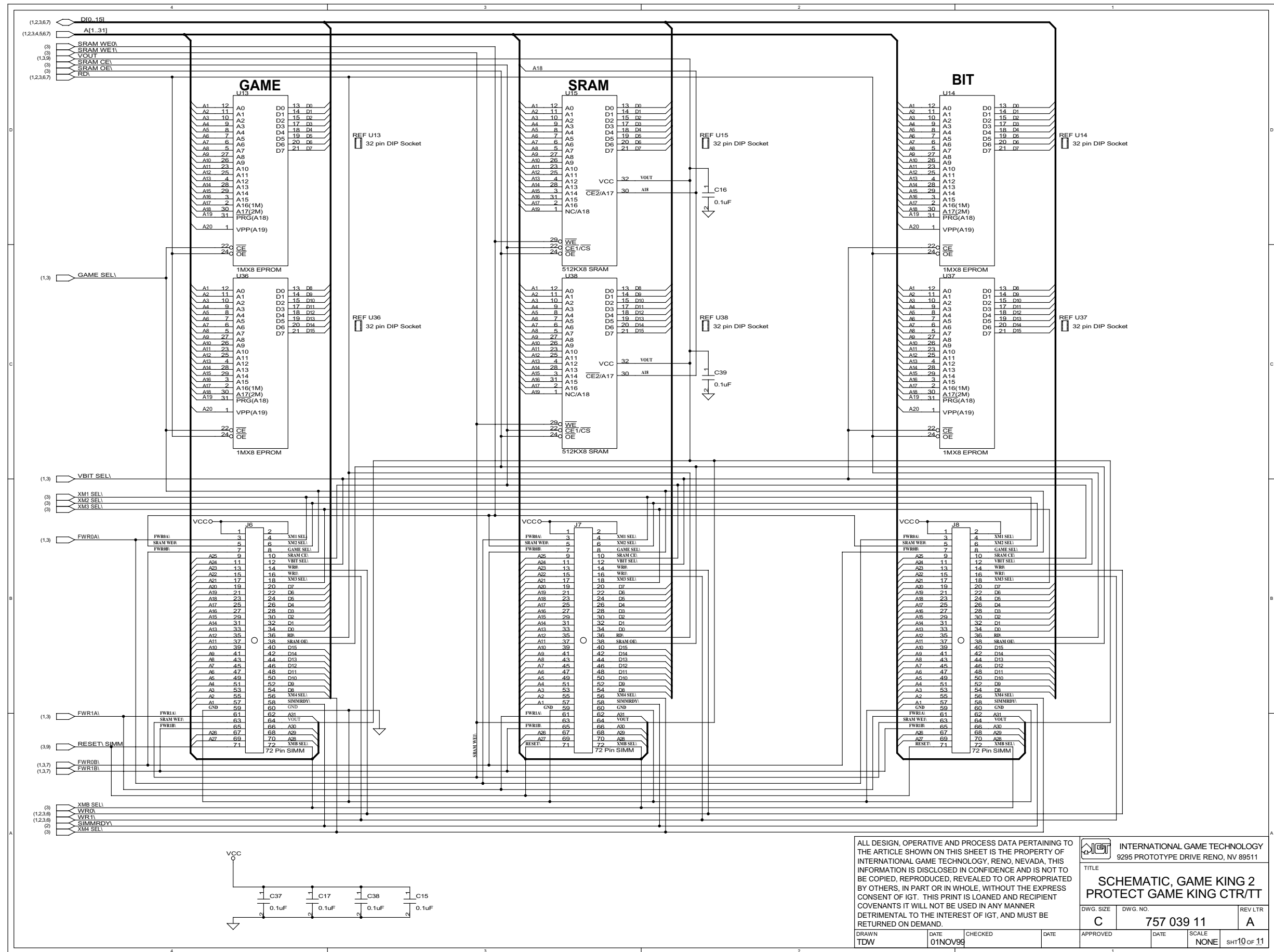
INTERNATIONAL GAME TECHNOLOGY  
9295 PROTOTYPE DRIVE RENO, NV 89511

TITLE  
**SCHEMATIC, GAME KING 2  
PROTECT GAME KING CTR/TT**

DWG. SIZE C DWG. NO. 757 039 11 REV LTR A

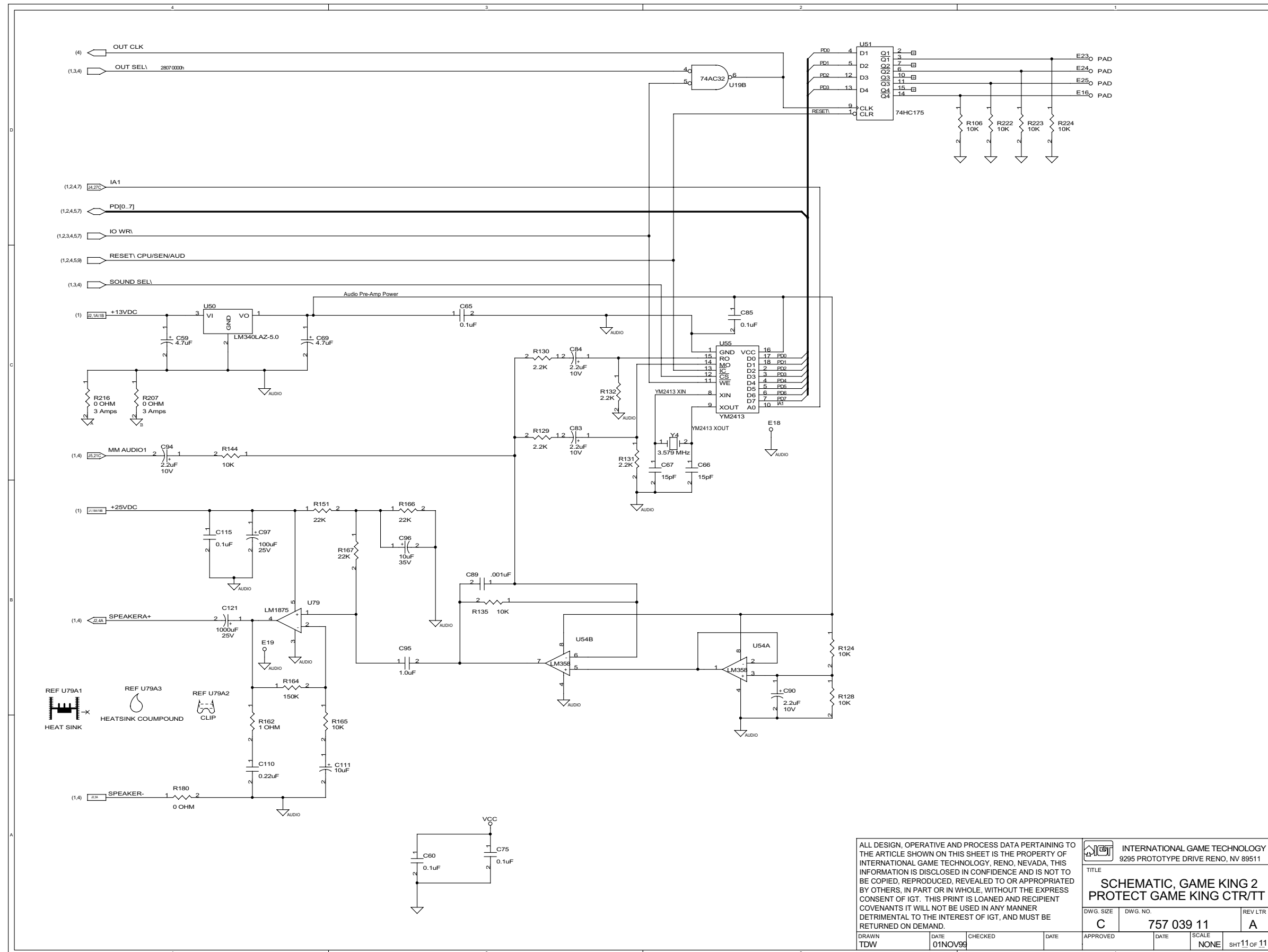
SCALE NONE SHT 9 of 11

DRAWN TDW DATE 01NOV99 CHECKED DATE APPROVED DATE



ALL DESIGN, OPERATIVE AND PROCESS DATA PERTAINING TO THE ARTICLE SHOWN ON THIS SHEET IS THE PROPERTY OF INTERNATIONAL GAME TECHNOLOGY, RENO, NEVADA, THIS INFORMATION IS DISCLOSED IN CONFIDENCE AND IS NOT TO BE COPIED, REPRODUCED, REVEALED TO OR APPROPRIATED BY OTHERS, IN PART OR IN WHOLE, WITHOUT THE EXPRESS CONSENT OF IGT. THIS PRINT IS LOANED AND RECIPIENT COVENANTS IT WILL NOT BE USED IN ANY MANNER DETRIMENTAL TO THE INTEREST OF IGT, AND MUST BE RETURNED ON DEMAND.

INTERNATIONAL GAME TECHNOLOGY 9295 PROTOTYPE DRIVE RENO, NV 89511	
TITLE <b>SCHEMATIC, GAME KING 2 PROTECT GAME KING CTR/TT</b>	
DWG. SIZE <b>C</b>	DWG. NO. <b>757 039 11</b>
REV/LTR <b>A</b>	SCALE <b>NONE</b>
DATE <b>01NOV99</b>	CHECKED
DATE	DATE
APPROVED	DATE
SCALE <b>NONE</b>	SH110 of 11



DWG. NO. 757 039 11

ALL DESIGN, OPERATIVE AND PROCESS DATA PERTAINING TO THE ARTICLE SHOWN ON THIS SHEET IS THE PROPERTY OF INTERNATIONAL GAME TECHNOLOGY, RENO, NEVADA, THIS INFORMATION IS DISCLOSED IN CONFIDENCE AND IS NOT TO BE COPIED, REPRODUCED, REVEALED TO OR APPROPRIATED BY OTHERS, IN PART OR IN WHOLE, WITHOUT THE EXPRESS CONSENT OF IGT. THIS PRINT IS LOANED AND RECIPIENT COVENANTS IT WILL NOT BE USED IN ANY MANNER DETRIMENTAL TO THE INTEREST OF IGT, AND MUST BE RETURNED ON DEMAND.

INTERNATIONAL GAME TECHNOLOGY 9295 PROTOTYPE DRIVE RENO, NV 89511	
TITLE <b>SCHEMATIC, GAME KING 2 PROTECT GAME KING CTR/TT</b>	
DWG. SIZE <b>C</b>	DWG. NO. <b>757 039 11</b>
REV LTR <b>A</b>	
DRAWN TDW	DATE 01NOV98
CHECKED	DATE
APPROVED	DATE
SCALE NONE	SHT 11 OF 11