

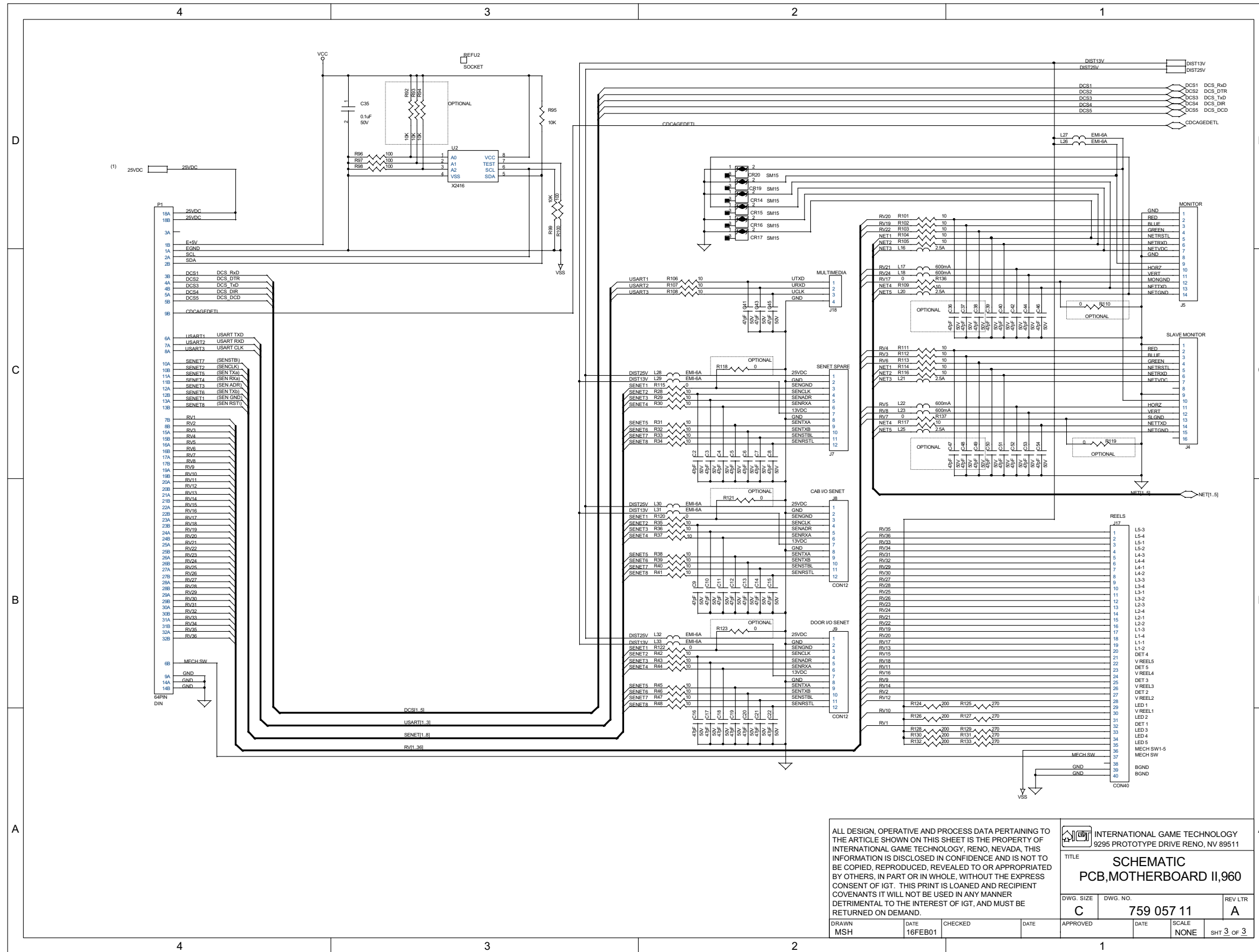
ALL DESIGN, OPERATIVE AND PROCESS DATA PERTAINING TO THE ARTICLE SHOWN ON THIS SHEET IS THE PROPERTY OF INTERNATIONAL GAME TECHNOLOGY, RENO, NEVADA. THIS INFORMATION IS DISCLOSED IN CONFIDENCE AND IS NOT TO BE COPIED, REPRODUCED, REVEALED TO OR APPROPRIATED BY OTHERS, IN PART OR IN WHOLE, WITHOUT THE EXPRESS CONSENT OF IGT. THIS PRINT IS LOANED AND RECIPIENT COVENANTS IT WILL NOT BE USED IN ANY MANNER DETRIMENTAL TO THE INTEREST OF IGT, AND MUST BE RETURNED ON DEMAND.

INTERNATIONAL GAME TECHNOLOGY
9295 PROTOTYPE DRIVE RENO, NV 89511

TITLE
SCHEMATIC
PCB, MOTHERBOARD II, 960

DWG. SIZE	DWG. NO.	REV LTR
C	759 057 11	A
DRAWN	DATE	CHECKED
MSH	16FEB01	
APPROVED	DATE	SCALE
		NONE

SHT 2 OF 3



ALL DESIGN, OPERATIVE AND PROCESS DATA PERTAINING TO THE ARTICLE SHOWN ON THIS SHEET IS THE PROPERTY OF INTERNATIONAL GAME TECHNOLOGY, RENO, NEVADA. THIS INFORMATION IS DISCLOSED IN CONFIDENCE AND IS NOT TO BE COPIED, REPRODUCED, REVEALED TO OR APPROPRIATED BY OTHERS, IN PART OR IN WHOLE, WITHOUT THE EXPRESS CONSENT OF IGT. THIS PRINT IS LOANED AND RECIPIENT COVENANTS IT WILL NOT BE USED IN ANY MANNER DETRIMENTAL TO THE INTEREST OF IGT, AND MUST BE RETURNED ON DEMAND.

INTERNATIONAL GAME TECHNOLOGY
9295 PROTOTYPE DRIVE RENO, NV 89511

TITLE
**SCHEMATIC
PCB, MOTHERBOARD II, 960**

DWG. SIZE: **C** DWG. NO.: **759 057 11** REV LTR: **A**

DRAWN: MSH DATE: 10FEB01 CHECKED: DATE: APPROVED: DATE: SCALE: NONE SHT 3 OF 3