

Mechanical Parts

Player's Edge-Plus Flat-Top Imbedded Bill Acceptor



Mechanical Parts Player's Edge-Plus Flat-Top Imbedded Bill Acceptor

Warranty

IGT warrants that its products have been manufactured in conformity with all applicable jurisdiction regulations where this machine is licensed, and that during the warranty periods specified by contract, its products will be free from defects in workmanship and material. Minor deviations from specifications or descriptions shown in IGT product literature or service manuals which do not affect the performance of the product are not considered to be defects in workmanship or materials, and are not covered by this warranty. Operation or maintenance of the product other than as specified in IGT's service manuals, and any unauthorized modifications (even if intended to correct a problem) void all warranties. IGT's sole duty hereunder is to repair, correct, or, at IGT's option, replace defective products or parts during the contract warranty period only.

Information in this document is subject to change without notice and does not represent a commitment on the part of IGT, a wholly owned subsidiary of International Game Technology. No part of this manual may be reproduced or transmitted in any form or by any means, electronic or mechanical, including photocopying and recording, for any purpose other than the purchaser's personal use without written permission of IGT.

THE WARRANTIES SET FORTH HEREIN CONSTITUTE IGT'S SOLE AND EXCLUSIVE LIABILITY FOR DEFECTIVE AND NON-CONFORMING PRODUCTS OR PARTS. ALL OTHER WARRANTIES, EXPRESS OR IMPLIED, INCLUDING BUT NOT LIMITED TO WARRANTIES OF MERCHANTABILITY AND FITNESS FOR A PARTICULAR PURPOSE, ARE HEREBY DISCLAIMED. IN NO EVENT SHALL IGT BE LIABLE FOR DIRECT, INDIRECT, INCIDENTAL OR CONSEQUENTIAL DAMAGES, INCLUDING BUT NOT LIMITED TO LOSS OF USE, REVENUE OR PROFITS. REMEDIES SET FORTH HEREIN ARE EXCLUSIVE.

NOTICE:

The following trademarks are owned by IGT and are registered with the U.S. Patent and Trademark Office: International Game Technology; IGT; the IGT logo with spade design; Aces\$ Bonus Poker w/Design; Balloon Bars; Bit-Blitz; Black Cherry; Black Jack; Black Rhino; Black Tie; Black Widow; Candy Bars; Casino Night; Cats 'n' Dogs; Chaos; Checkmate; Colorado Nickels; Coral Reef; Dollars Deluxe; Double Diamond; Double Diamond Deluxe; Fabulous 50's; Fancy Fruits; Five Times Pay Design; Fourth of July; Free Kick; Fruit Falls; Go Bananas; Gold Fever; Gold Mountain; Gold Silver & Bronze; Haywire; Home Run; Hot Peppers; Hurricane; iGame with Design (interactive gaming); Jackpot Jewels; Jackpot Jungle; Joker Design; Kangaroo; Knockdown; Leap Frog; Loose DEUCES DEUCES Wild; Louisiana Louie; Louisiana Nickels; Lucky 7's; Mag 7; Mega Poker; Megabucks; Megakeno; Mississippi Megabucks; Mississippi Nickels; Money Storm; Nevada Nickels; Nickel Mania; Nickels Deluxe; One Pull Can Change Your Life; Player's Edge; Player's Edge-Plus; Pokermania; Pure Pleasure; Quartermania; Quarters Deluxe; Red, White & Blue; River Gambler; Royal Flush; Royal Riches; Satellite; Score Board; SENET; Set 4 Life; Sevens Up; Sierra Silver; Sizzling 7; Slam Dunk; SlotView; SMART System; Spin Til You Win; Strike; Super Stars; Tidal Wave; Time Warp; Touchscreen Design; Triple Bonanza; Triple Cash w/Design; Triple Diamond; Triple Diamond Deluxe; Triple Dollars; Triple Jackpot w/Design; Volcano; Whirl Win; Wild Cherry; Wild Diamonds; Winner's Choice; 8 Ball.

The following trademarks are owned by IGT and are registered with the State of Nevada: Bonus Poker; Deuces Joker Wild Poker; Double Dollars; Double Dribble; Double Mania; Doublemania; Earthquake; Fistful of Dollars; Fortune Reel; Fun Casino; Hurricane Is Wild; Jackpot Devil; Patriot Poker; Quick Draw; Quick Silver; Slotto; Super Joker; Touchdown; Triple Play; Victory; Win Place Show.

IGT also owns trademark rights to the following: I.G.T. (Australia) Pty. Limited; I.G.T. (Manufacturing) Pty. Limited; I.G.T. (New Zealand) Limited; I.G.T.-Argentina S.A.; IGT-China; IGT-China Management; IGT-Colorado Corp.; IGT-Europe b.v.; IGT-Iceland, Ltd.; IGT-Montana, Inc.; IGT-UK Limited; IGT (Asia) Company Limited; IGT do Brasil, Ltda.; IGT-Japan K.K.; International Game Technology-Africa (Proprietary) Limited; International Game Technology S.R. Ltda.; Beachcomber Joker Poker; Blackout Poker; Bonus Wheel w/Design; Caveman Keno; Chocolate Bars; Country Mania; Deuces Wild Bonus Poker w/Design; Diamond Fives; Diamond Mine; Dimes Deluxe; Double Desire; Double Diamond Mine; Double Double Dollars; Double Hearts; Double Wild w/Design; Free Fall Poker; Game King; High Rollers Design; Jackpot Poker Design; Jurassic Jackpots; Keno Deluxe; Lion Fish; Lock & Roll; Lucky Deal Poker; Mega Mystery; MegaJackpots; Megaspot; Money Card Design; Moolah; Mystery Bonus; Mystery Millions; On The Prowl; Racing 7's; Perfect Ten; Play It Again Poker; Rapid Jackpot; Red Ball; Shore Money; Slot King; Slot Line; Slotopoly; Super 8 Race; Super Double Pays w/Design; Temperature's Rising; Ten Times Pay w/Design; Triple Bonus Poker w/Design; Triple Cat; Triple Play Draw Poker; Triple Sapphires; Tropical Fever; Wild Cherry Pie.

© 1998 by IGT. All rights reserved.

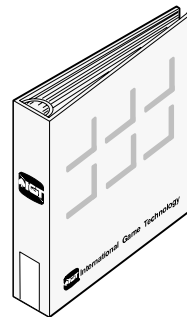
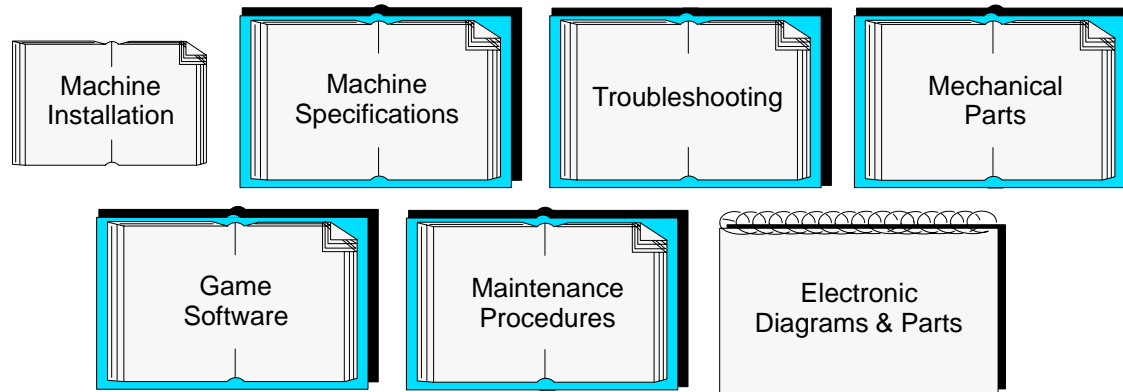
IGT
9295 Prototype Drive
Reno, Nevada 89511-8986
(702) 448-7777

About Field Service Documentation

IGT manuals are structured to:

- Meet customer requests for separate parts and electronic manuals
- Reduce customer cost for manuals
- Allow customers to purchase the information they use most in the quantities they need

Complete Set of Documentation =
Seven Standalone Manuals



(Binders must be purchased separately.)

Packaging

Note: Most manuals are 8.5" x 11" format, shrink-wrapped and 3-hole punched to fit into a standard 3-ring binder.

Exceptions: Machine Installation, Electronic Diagrams & Parts.

Related Documentation

This manual contains information related to mechanical parts only. It should be used in conjunction with the appropriate IGT field service manuals for operations such as machine installation, game software, troubleshooting, maintenance and repair.

- The *Machine Specifications* manual (p/n 821-288-0X) provides environmental, electrical, dimensional, stand, and lock specifications for IGT machines.
- The *Machine Installation* manual (p/n 821-287-0X) contains overall installation instructions for all IGT machines.
- The *Troubleshooting: Game Machines* manual (p/n 821-283-0X) contains procedures to diagnose and rectify common problems with hardware components of these machines.
- The *Game Software: Player's Edge-Plus Products* manual (p/n 821-227-0X) contains program information required to select options, test, diagnose and record cumulative data for player's Edge-Plus machines.
- The *Player's Edge-Plus Drop-In-Bar IBA Field Service* manual (p/n 821-178-00) provides complete field service instructions – removal/replacement, maintenance and adjustments, disassembly and assembly and functional verification – for both optional and standard components.
- The *Electronic Diagrams & Parts: Player's Edge-Plus Flat-Top IBA* manual (p/n 821-199-0X) contains wiring diagrams, board assemblies and schematics for Player's Edge-Plus flat-top machines.
- The *S-Plus/Player's Edge-Plus Electronics Repair* manual (p/n 821-126-0X) contains detailed board-level instruction for electronic repair technicians for S-Plus and Player's Edge-Plus machines.

Related Videotapes

Videotapes are available in NTSC or PAL format.

- *Machine Installation* (p/n 828-008-XX) reviews pertinent procedures for installing machines in standard gaming or video lottery environments.
- *Basic Machine Troubleshooting* (p/n 828-010-XX) provides the beginning slot machine mechanic with the information necessary to troubleshoot IGT's stepper slot and video games.
- *Machine Troubleshooting, Part 2* (p/n 828-012-XX) continues with information from the *Basic Machine Troubleshooting* video and focuses on detailed problem analysis and solutions addressing the most common problems encountered in casino floor environments.
- *Player's Edge-Plus Overview* (p/n 828-030-XX) presents the different models of Player's Edge-Plus slot machines and identifies components, features and game types.
- *Player's Edge-Plus Electronics Repair* (p/n 828-015-XX) presents detailed board-level instruction on Player's Edge-Plus processor boards for electronic repair technicians.
- *Ceronix Monitor Repair* (p/n 828-005-XX) provides technicians with board-level repair information for Ceronix monitors.
- *Machine Attendant Operations* (p/n 828-011-XX) presents basic operating procedures for casino floor personnel and introduces the viewer to game play features and component identification of Player's Edge-Plus machines.
- *JCM DBV-45-SS Bill Acceptor Service and Repair* (p/n 828-009-XX) presents essential operation, service and adjustment procedures on the security stacker version of the JCM model used in imbedded-style bill acceptors.

Customer Services

24-hour Technical Information - For viewing and downloading technical information, log onto IGT's electronic Product Information Network or contact the system operator in North America:

Web Site: <http://igtpin.intgame.com>
E-mail Address: igtpin@intgame.com
Voice Mail: 702-448-1826

IGT 24-hour Customer Service Hotline - For calls relating to service or other technical assistance, call: 1-800-688-7890.

For parts information, contact:

IGT Customer Service
9295 Prototype Drive
Reno, Nevada (USA) 89511-8986
Telephone (8 a.m. - 4 p.m. PST): 702-448-0364
FAX: 702-448-0675

Table of Contents

Introduction	1
Machine Enclosure	2
Top Panel	4
Video Monitor	6
Lower Module	8
Player Panel Switch	10
Coin-In Handling - Small Denomination	12
Coin-In Handling - Large Denomination	14
Bill Acceptor	16
Pinwheel Hopper - Small Coin	18
Pinwheel Hopper - Large Coin	20
Holeywheel Hopper - Large Coin	22

Introduction

IGT field service documentation consists of a series of manuals. Each manual addresses a different aspect of field service and is designed to be used in conjunction with other standalone manuals related to maintenance, installation, game software, troubleshooting, electronics and parts. Manuals are tailored for product group or, in some cases, product models. Refer to the About Field Service Documentation in the front of this manual for a graphic representation of the manual series.

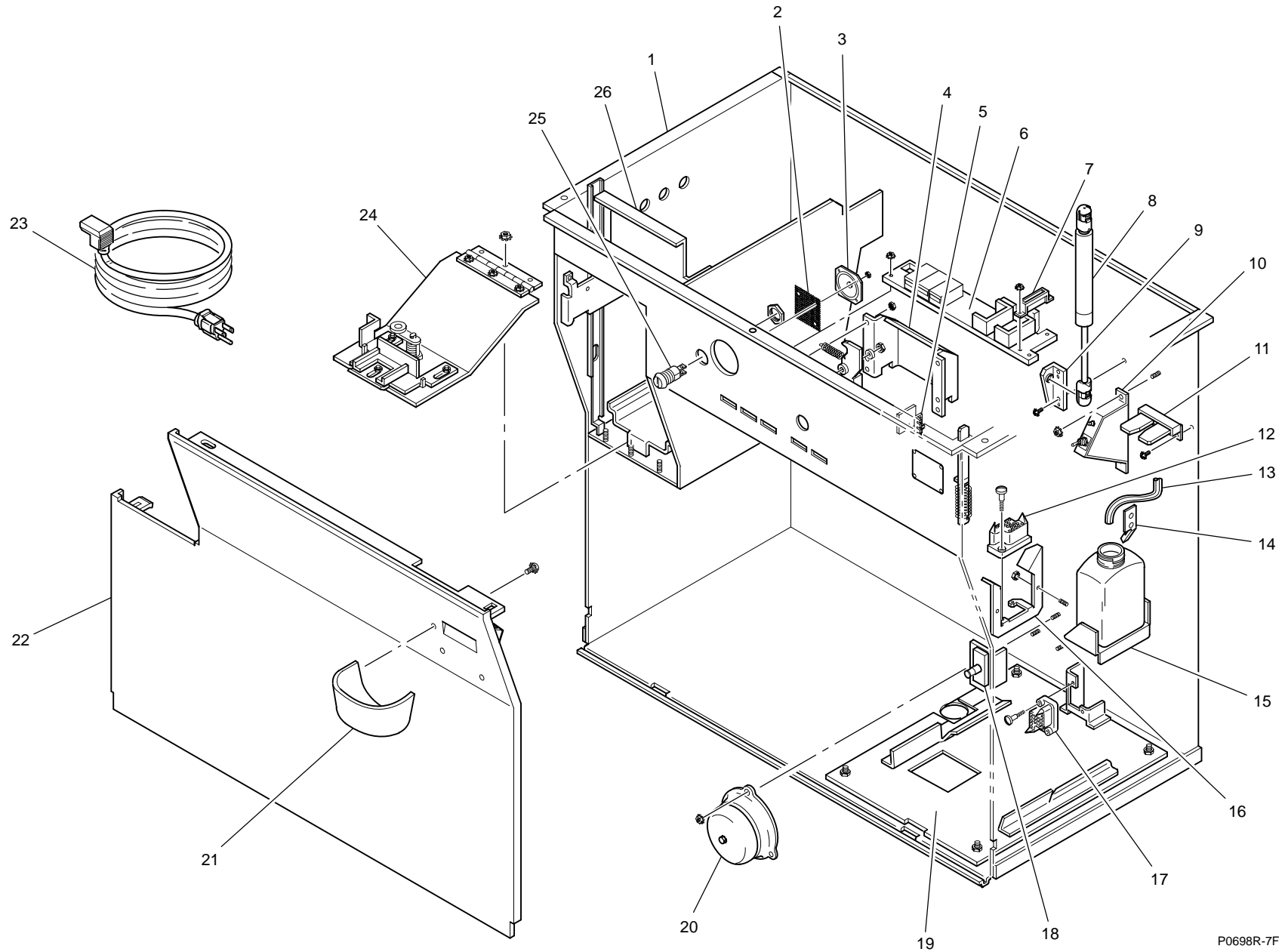
All manuals contain the following information to assist the reader in making the best use of IGT documentation:

- **About Field Service Documentation** – is included at the front of each manual, and includes a graphic representation of the IGT field service manual series.
- **Related Documentation and Related Videotapes** – appear at the front of each manual and list other books and videotapes that should be used in conjunction with this manual.

MACHINE ENCLOSURE

Fig. No.	Part No.	Description	Qty.	Fig. No.	Part No.	Description	Qty.
1	145 801 00	ENCLOSURE, F/T, DIB, IBA	1	16	636 714 00	BRACKET, PLUG MOUNTING, COIN IN	1
-	500 150 90	BOX, DROP, UNIVERSAL, DIB	1	-	424 015 92	NUT, KEP STEEL, M5	2
2	688 257 00	COVER, SPEAKER, 13001490, 2-INCH SQUARE	1	17	217 068 90	PLUG, 19-SOCKET, CRIMP, AMP, R&P	1
3	130 014 90	SPEAKER, 8 OHM 1W 2-INCH SQUARE	1	-	419 986 90	SCREW, SHOULDER, 74 X 5.10D X 11.8	2
-	284 152 00	SHIM, 2-INCH SPEAKER (NOT SHOWN)	1	18	516 074 90	SWITCH, P/B, DPDT, MOM	1
-	424 015 90	NUT, KEP, STEEL, M3	4	-	653 561 00	MOUNT, FRONT DOOR SWITCH, F/T IBA	1
4	688 748 00	COVER, LOCK, FLAT TOP IBA BAR	1	-	424 015 90	NUT, KEP, STEEL, M3	2
-	424 015 90	NUT, KEP STEEL, M3	4	19	589 932 00	PLATE, HOPPER MOUNT, F/T IBA	1
-	650 069 00	LATCH, TOP, F/T, IBA	1	-	424 015 90	NUT, KEP, STEEL, M3	4
-	330 096 90	SPRING, EXT., 360OD X 1.00L X .039W	1	20	915 597 00	KIT, BELL, F/T IBA	1
-	421 017 90	NUT, LOCK, ESNA, REGULAR, M3	1	-	228 009 00	BELL ASSEMBLY, 3-INCH, 24V, F/T IBA	1
-	421 017 92	NUT, LOCK, ESNA, REGULAR, M5	1	-	220 003 90	BELL, 3-INCH, 24V, F/T IBA	1
5	575 068 00	ENCODER, DOOR OPEN RECEIVER	1	-	421 017 90	NUT, LOCK, ESNA REGULAR, M3	3
-	653 099 00	MOUNT, DOOR OPEN OPTICS	1	21	597 173 00	TRAY, COIN RETURN, FLAT TOP BAR	1
-	430 028 90	WASHER, FLAT, STEEL, M3	2	-	417 003 99	SCREW, TAP AB PH PAN #6X3/8	3
-	419 018 91	SCREW, SEMS, PH PAN, M3 X 8	2	22	719 136 00	DOOR, FRONT, F/T IBA	1
6	626 856 00	BRACKET, METER MOUNT, F/T IBA	1	-	688 710 0X	COVER, LAM, FRNT DR, F/T IBA	1
-	424 015 90	NUT, KEP, STEEL, M3	2	-	688 711 0X	COVER ASSEMBLY, FRONT DOOR, F/T IBA	1
-	292 098 01	METER ASSEMBLY, 3-METER, FLAT-TOP	1	-	420 017 90	NUT, HEX, STEEL, M3	6
-	292 098 02	METER ASSEMBLY, 4-METER, FLAT-TOP	1	23	618 055 90	CORD, POWER, RT. ANGLE, 7.5 FT	1
-	292 098 00	METER ASSEMBLY, 5-METER, FLAT-TOP	1	KIT	916 462 00	KIT, LOCK, STANDARD, F/T, IBA, 1 LOCK	1
-	292 034 90	COUNTER, 24VAC, 6-DIGIT TOTAL	3-5	24	719 135 00	DOOR, B/A CASH BOX, F/T IBA, 1 LCK	1
-	626 859 00	BRACKET, METER BLANKING	1-2	-	589 756 00	PLATE, LOCKING, B/A DOOR, F/T, IBA	1
-	419 510 98	SCREW, SEMS, PH PAN, 4-40 X 3/16	10	-	330 016 02	SPRING, EXT, .25OD X 1.00L X .018W	2
7	218 021 90	TERMINAL BLOCK, 10-POS COMMONING	1	-	674 472 00	SPACER, B/A DOOR, DSST	3
-	424 015 90	NUT, KEP, STEEL, M3	2	-	421 017 91	NUT, LOCK, ESNA, REGULAR, M4	3
8	659 130 90	SHOCK, 8-40 COMP, 12.00 EXT, 50 LB.	1	-	424 015 90	NUT, KEP, STEEL, M3	3
-	659 110 90	SHOCK, BALL STUD	1	-	280 087 00	HINGE, CASH BOX DOOR, F/T, IBA	1
9	626 858 00	BRACKET, LWR SHOCK MNT, F/T IBA	1	-	424 015 91	NUT, KEP, STEEL, M4	6
-	419 020 92	SCREW, SEMS, PH PAN, M5 X 10	2	25	513 001 90	SWITCH, KEY, M/O, KEYED ALIKE, FAS	1
-	430 009 94	WASHER, FLAT, STEEL, 5/16, TYPE B/N	1	-	531 021 90	WASHER, LOCK, EXT., STEEL, 3/4	1
10	608 598 00	POWER/SELF TEST SWITCH ASSEMBLY, F/T IBA	1	26	145 652 00	ENCLOSURE, B/A, F/T, IBA	1
-	626 857 00	BRACKET, POWER SWITCH, F/T IBA	1	-	635 050 00	BRACE, B/A ENTRY	1
-	424 015 90	NUT, KEP, STEEL, M3	2	-	424 015 90	NUT, KEP, STEEL, M3	5
-	516 025 90	SWITCH, P/B, MINI SPDT MOM	1	-	581 352 00	GUIDE, B/A, CASH BOX, F/T, IBA	1
-	511 018 90	SWITCH, TOGGLE, DPST, .250 FASTON	1	-	440 001 00	PIN, BUIDE, PIVOT, F/T, IBA	1
-	850 152 00	LABEL, POWER ON/OFF	1	-	447 001 90	RING, E, 133-.12 SHAFT	1
11	636 914 00	BRACKET, ESCALATOR LOCATING, F/T	1	Note: The extension of 0X or XX indicates multiple options are available.			
-	419 018 91	SCREW, SEMS, PH PAN, M3X8	2				
12	217 068 90	PLUG, 19-SOCKET, CRIMP, AMP, R&P	1				
-	419 986 90	SCREW, SHOULDER, 74 X 5.10D X 11.8	2				
13	598 021 90	TUBING, CLEAR VINYL, 1/4 ID	1				
14	636 913 00	BRACKET, DRAIN TUBE, FLAT TOP	1				
-	411 016 90	SCREW, MACH FH, 90 DEG, M3 X 6	2				
15	636 900 00	BRACKET, BOTTLE, FLAT TOP	1				
-	810 002 90	CONTAINER, DRAIN, BOTTLE	1				
-	419 018 91	SCREW, SEMS, PH PAN, M3 X 8	2				

MACHINE ENCLOSURE



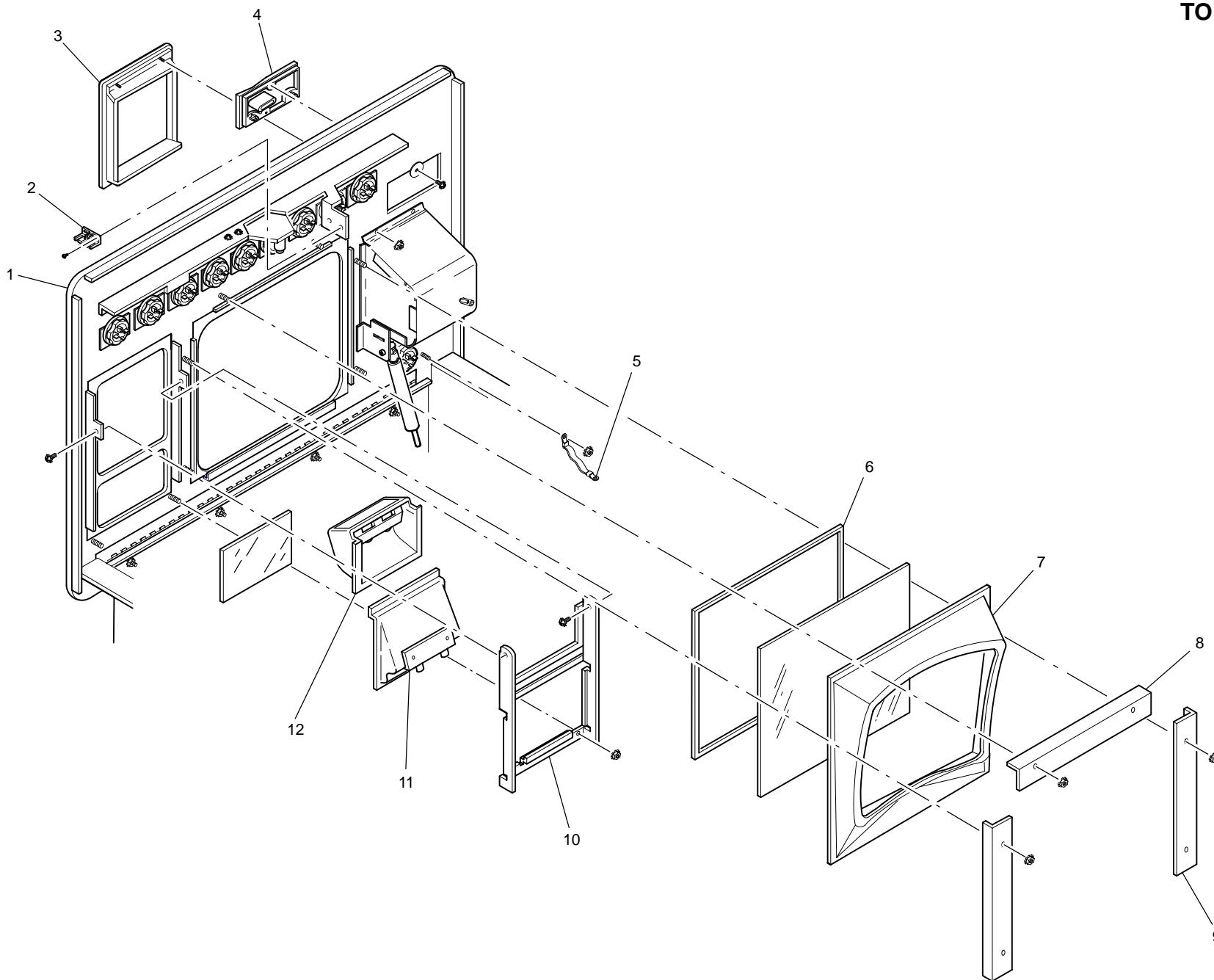
P0698R-7F

TOP PANEL

Fig. No.	Part No.	Description	Qty.	Fig. No.	Part No.	Description	Qty.
-	625 093 0X	RING, TOP PANEL (NOT SHOWN)	1	8	442 094 00	CLAMP, GLASS, TOP PANEL, FRONT, DIB2	1
ASSY	655 021 0X	PANEL ASSEMBLY, TOP, F/T IBA	1	-	424 015 90	NUT, KEP STEEL, M3	2
1	685 482 0X	PANEL, TOP, F/T IBA	1	9	442 247 00	CLAMP, MASK, TOP PANEL, F/T IBA	2
-	659 163 00	CATCH, REINFORCED PANEL, F/T IBA	1	-	424 015 90	NUT, KEP STEEL, M3	4
-	411 017 90	SCREW, MACHINE, FH, 90DEG, M4 X 6	3	10	653 560 00	MOUNT, B/A COVER, F/T, IBA	1
-	665 027 00	ROLLER, TOP LATCH	1	-	419 018 90	SCREW, SEMS, PH PAN, M3 X 6	2
-	430 028 90	WASHER, FLAT, STEEL, M3	1	-	424 015 90	NUT, KEP, STEEL, M3	2
-	419 018 90	SCREW, SEMS, PH PAN, M3 X 6	1	11	196 345 00	BOX, LIGHT ASSEMBLY, F/T IBA	1
-	659 130 90	SHOCK, 8-40 COMP, 12.00 EXT, 50 LB.	1	-	196 344 00	BARRIER, DISPLAY GLASS, F/T IBA	1
-	659 110 90	BALL, STUD, SHOCK	1	-	120 027 90	SOCKET, LAMP MINI WEDGE T-1 3/4	2
-	430 009 94	WASHER, FLAT, STEEL, 5/16, TYPE B/N	1	-	193 023 90	LAMP, T-1 3/4 6. 3V WEDGE 86	2
2	575 069 00	ENCODER, DOOR OPEN EMITTER	1	12	688 638 00	COVER, BILL ACCEPTOR ENTRY, F/T IBA	1
-	653 099 00	MOUNT, DOOR OPEN OPTICS	1	-	663 062 00	SEAL, FOAM, B/A COVER, F/T, IBA	1
-	430 028 90	WASHER, FLAT, STEEL, M3	2	-	853 320 0X	PLAQUE, B/A, F/T, IBA	1
-	419 018 91	SCREW, SEMS, PH PAN, M3 X 8	2	-	751 162 0X	PCB, F/T, IBA, DENOM LAMPS	1
3	646 013 0X	BEZEL, COIN TRAY, FLAT TOP	1	-	196 360 00	BARRIER, B/A PLAQUE, F/T, IBA	1
-	424 015 90	NUT, KEP STEEL, M3	2	-	430 028 96	WASHER, FLAT, STEEL, M2	1
4	578 167 0X	ENTRY, COIN, F/T	1	-	411 024 91	SCREW, MACHINE, PH PAN, M2 X 6	1
-	439 024 90	WASHER, FENDER, .205 X .75 X .62 THK	1	-	578 516 00	ENTRY, B/A, F/T, IBA	1
-	419 510 94	SCREW, SEMS, PH PAN, 6-32 X 1/4	1	-	419 018 91	SCREW, SEMS, PH PAN, M3 X 8	4
5	619 059 00	CABLE, GROUND 5/16 BRAID 2.0	1	-	663 062 00	SEAL, FOAM, B/A COVER, F/T IBA	1
-	424 015 90	NUT, KEP STEEL, M3	1				
6	663 039 00	SEAL, VIDEO GLASS, DIB	1				
7	652 147 00	MASK, MONITOR, FLAT TOP BAR	1				
-	319 025 90	TAPE, FOAM, BLACK. 1/16 X 1/4, ADHV	3				

Note: The extension of 0X indicates multiple options are available.

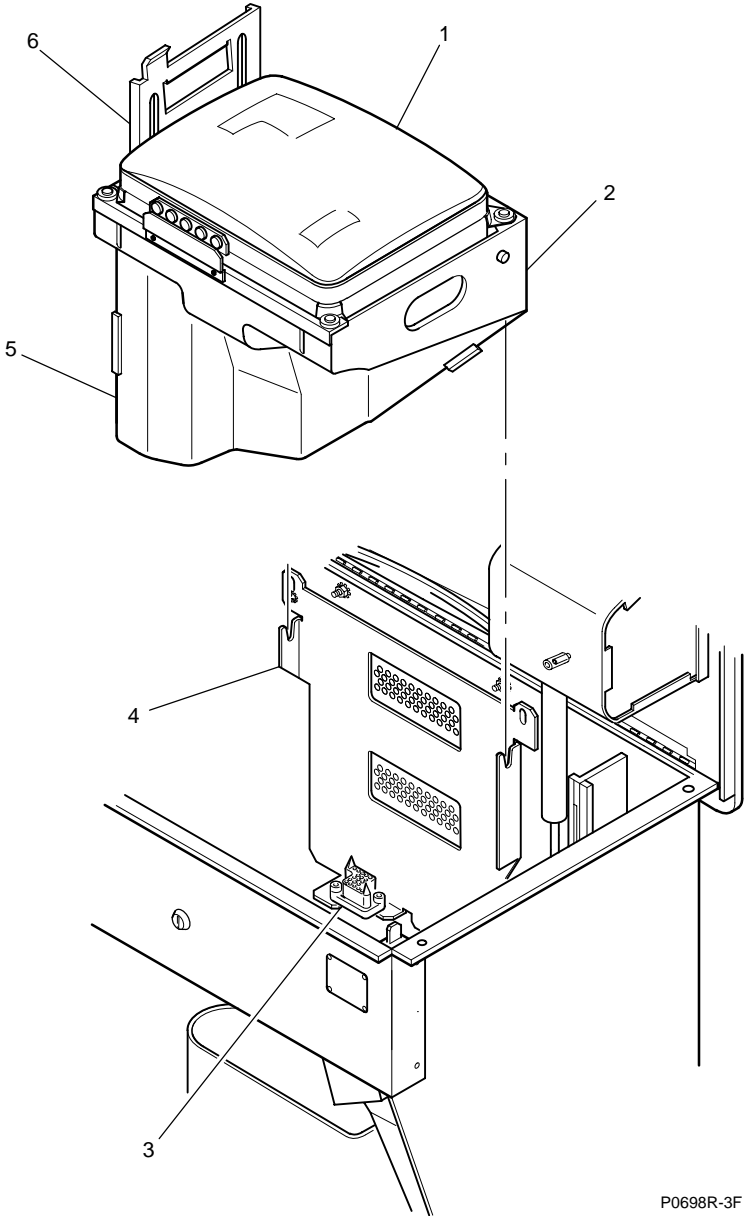
TOP PANEL



VIDEO MONITOR

Fig. No.	Part No.	Description	Qty.	Fig. No.	Part No.	Description	Qty.
1	699 184 00	MONITOR ASSEMBLY, FLAT-TOP, PE-PLUS	1	—	419 019 92	SCREW, SEMS, PH PAN, M4 X 10	3
1	699 118 00	MONITOR ASSEMBLY, 50/60 HZ, FLAT-TOP	1	—	430 028 92	WASHER, FLAT, STEEL, M5	3
—	691 053 90	MONITOR, 13" PE-PLUS, S/T, W/O CHASSIS	1	5	688 769 00	COVER, MONITOR F/T, INJ. MOLDED	1
2	143 174 00	CHASSIS, MONITOR, F/T (USE WITH 699 184 00)	1	6	916 310 00	KIT, MONITOR HANDLE, F/T IBA	1
—	419 520 92	SCREW, SEMS, PH PAN, 8-32 X 1/2	2	—	380 027 00	HANDLE, MONITOR CHASSIS, F/T IBA	1
—	688 006 00	COVER, MONITOR, F/T VGA, 960	1	—	674 479 00	SPACER, MONITOR HANDLE, F/T IBA	3
—	002 043 00	PCB ASSEMBLY, CERONIX, 1492 (B) CGA	1	—	419 019 92	SCREW, SEMS, PH PAN, M4 X 10	3
—	002 044 00	PCB ASSEMBLY, CERONIX, 1492 (4) CGA	1				
—	002 045 00	PCB ASSEMBLY, CERONIX, 1492 (D) CGA	1	—	698 021 90	TUBE, MONITOR, INV IMAGE, 13 IN.	1
—	002 046 00	PCB ASSEMBLY, CERONIX, 1492 (E) CGA	1	—	439 024 90	WASHER, FENDER .205 X .75 X .62 THK	4
2	143 146 00	CHASSIS, MONITOR, F/T IBA (USE WITH 699 118 00)	1	—	411 009 95	SCREW, MACHINE, PH PAN, 10-32 X 1/2	4
				—	756 047 90	BOARD ASSEMBLY, W/CHASSIS, MONITOR, 50/60 HZ	1
3	210 062 90	RECEPTACLE, 19-PIN, CRIMP, AMP R&P	1	—	411 003 97	SCREW, MACHINE, PH PAN, 6-32 X 1/4	2
—	411 007 92	SCREW, MACHINE, PH PAN, 8-32 X 3/8	2	—	424 003 95	NUT, KEP STEEL 6-32	1
4	589 939 00	MONITOR MOUNT PLATE, F/T IBA	1	—	002 042 00	PCB ASSEMBLY, CERONIX, 1490 (A) CGA	1

VIDEO MONITOR

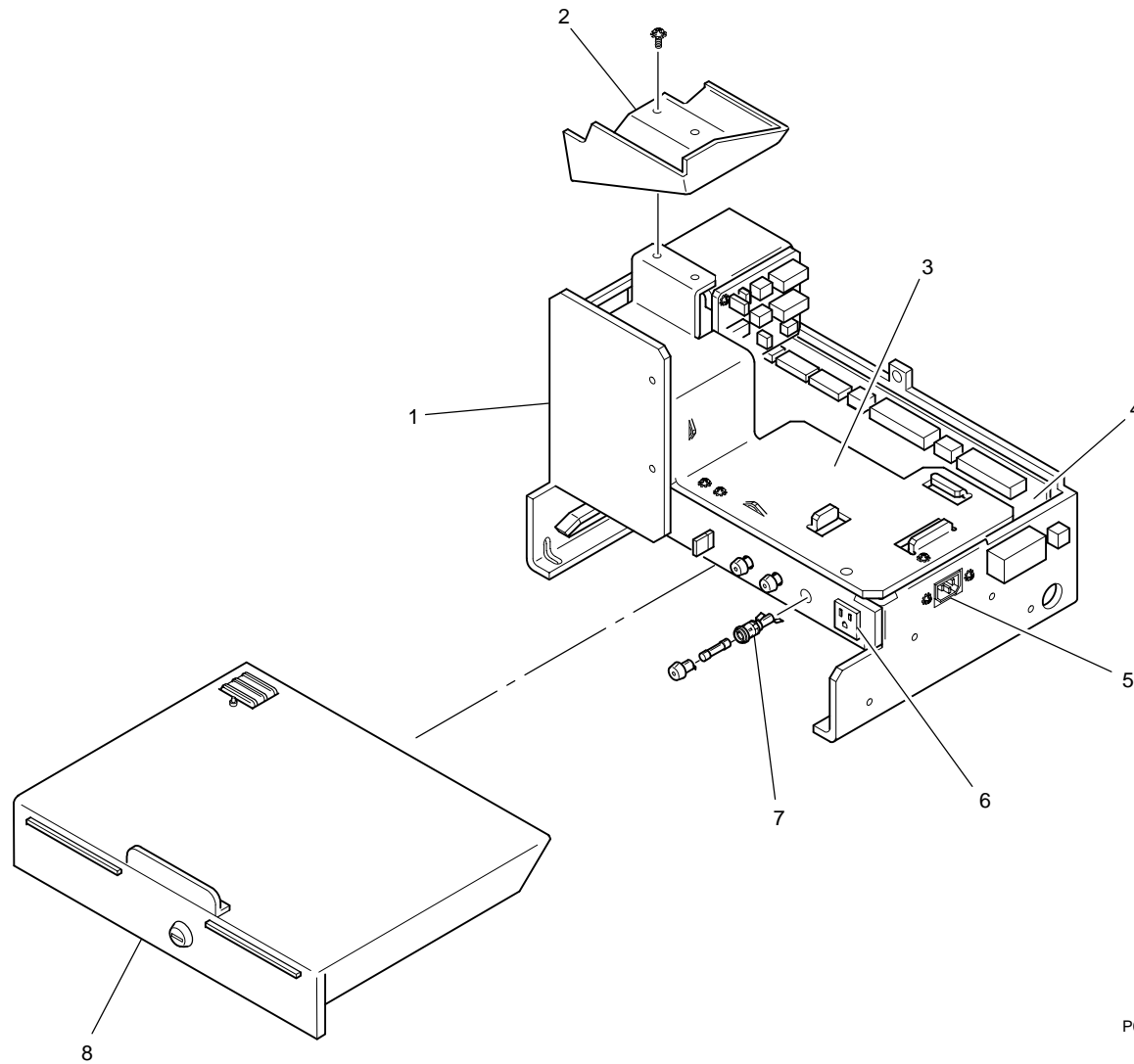


P0698R-3F

LOWER MODULE

Fig. No.	Part No.	Description	Qty.	Fig. No.	Part No.	Description	Qty.
1	400 064 00	POWER SUPPLY ASSEMBLY, 120 V, 50/60 HZ, FIBA	1	5	272 014 02	FILTER ASSEMBLY, 50/60 220 V CSA	1
-	400 064 01	POWER SUPPLY ASSEMBLY, 220 V, 50/60 HZ, FIBA	1	-	272 019 90	FILTER, LINE, 5 AMP, IEC CON CSA	1
-	400 064 02	POWER SUPPLY ASSEMBLY, 240 V, 40/60 HZ, FIBA	1				
-	143 145 00	CHASSIS - LOWER MODULE, FT/IBA	1	-	310 080 00	INSULATOR, LINE FILTER	1
-	424 015 90	NUT, KEP STEEL, M3	7	-	419 510 96	SCREW - SEMS, PH PAN, 6-32 X 3/8	2
-	589 995 00	PLATE, CONN, LOWER MODULE, FT/IBA	1				
-	419 018 90	SCREW, SEMS, PH PAN, M3 X 6	2	6	125 010 90	OUTLET, 125 VAC .250 Q-DISC GND	1
-	560 027 92	TRMR, 7V 24V, 115V 115V/220V CSA	1	-	589 923 00	PLATE - BLANK, SERVICE OUTLET, EURO	1
-	430 028 91	WASHER, FLAT, STEEL, M4	2	-	430 031 90	WASHER - FENDER, .25 X 1.25, SST	1
-	424 015 91	NUT KEP STEEL, M4	2	-	420 017 91	NUT - HEX, STEEL, M4	1
-	454 041 90	RELAY, SSR, 120/240 VAC, 5 AMP	1				
-	424 015 90	NUT, KEP, STEEL, M3	2	7	213 059 90	HOLDER - FUSE 3AG SHOCK PROOF STRAIGHT	3
				-	524 013 90	FUSE, F.B., 6 AMP	1
2	576 039 00	DIVERTER - F/T IBA LOWER MODULE	1	-	520 010 90	FUSE, S.B., 3 AMP	1
-	419 018 90	SCREW - SEMS, PH PAN, M3 X 6	2	-	520 012 90	FUSE, S.B., 5 AMP	1
3	688 749 00	COVER - LOWER MODULE, POWER SUPPLY, FT/IBA	1				
-	419 018 90	SCREW - SEMS, PH PAN, M3 X 6	2	8	597 275 0X	TRAY ASSEMBLY, SUPER BD	1
-	850 403 0X	LABEL - SW PNL, FT IBA	1	8	597 301 0X	TRAY ASSEMBLY, SUPER BD, W/METERS	1
				-	597 240 0X	TRAY - PROCESSOR, F/T IBA	1
4	759 038 XX	PCB, MOTHERBOARD PE+ DIB V2 ASSEMBLY		-	757 034 XX	PCB, PROCESSOR, SUPER, PE+	1
-	319 092 00	INSULATOR, MOTHERBOARD, F/T IBA	1	-	310 027 00	INSULATOR, PROCESSOR BOARD	1
-	419 018 90	SCREW, SEMS, PH PAN, M3 X 6	2	-	581 180 00	GUIDE, PC NYLON	1
-	674 186 00	SPACER, ST, RE .140IDX X .280D X .38L	1	-	850 487 90	LABEL, STATIC CAUTION, 1.75 X 2.50	1
-	411 013 95	SCREW, MACHINE, PH PAN, M3 X 16	1				

LOWER MODULE

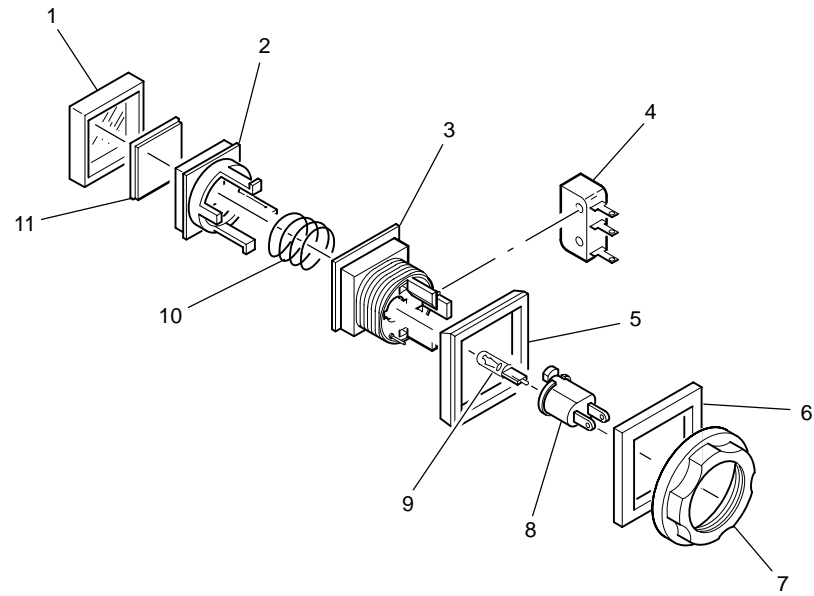


P0698R-2F

PLAYER PANEL SWITCH

Fig. No.	Part No.	Description	Qty.	Fig. No.	Part No.	Description	Qty.
ASSY	518 184 00	SWITCH ASSEMBLY, SQUARE	1	5	652 051 00	BEZEL, BEAUTY, SWITCH, SQUARE, IGT	1
ASSY	518 185 00	SWITCH ASSEMBLY, RECTANGULAR	1	5	652 050 00	BEZEL, BEAUTY, SWITCH, RECTANGULAR, IGT	1
1	517 158 00	CAP, CLEAR, SQUARE	1	6	674 114 00	SPACER, SQUARE SWITCH, IGT	1
1	517 157 00	CAP, CLEAR, RECTANGULAR	1	6	674 113 00	SPACER, RECTANGULAR SWITCH, IGT	1
1	517 159 00	CAP, RED, SQUARE	1				
1	517 160 00	CAP, IGT, RED SQUARE, 'CHANGE'	1	7	661 038 00	RETAINER, SWITCH, IGT	1
1	517 160 01	CAP, IGT, RED SQUARE, 'SERVICE'	1	8	120 027 90	SOCKET, LAMP, MINI, WEDGE, T1 3/4	1
				8	120 044 90	SOCKET, LAMP, SHORT, WEDGE, T1 3/4	1
2	658 054 00	PLUNGER, SWITCH, SQUARE, MOD 2	1				
2	658 055 00	PLUNGER, SWITCH, RECTANGLE, MOD 2	1	9	193 023 90	LAMP, T1 3/4, 6.3V WEDGE, #86	1
3	516 064 00	SWITCH, BODY, SQUARE, W/GND, MOD 2	1	10	331 035 00	SPRING, COMP, .610 X .425 X .029	1
3	516 063 00	SWITCH, BODY, RECTANGULAR, W/GND, MOD 2	1	11	515 157 XX	PLATE, LEGEND, SQUARE	1
4	510 001 90	SWITCH, SNAP-SUBM, PIN PLUNGER	1	11	515 158 XX	PLATE, LEGEND, RECTANGULAR	1

PLAYER PANEL SWITCH

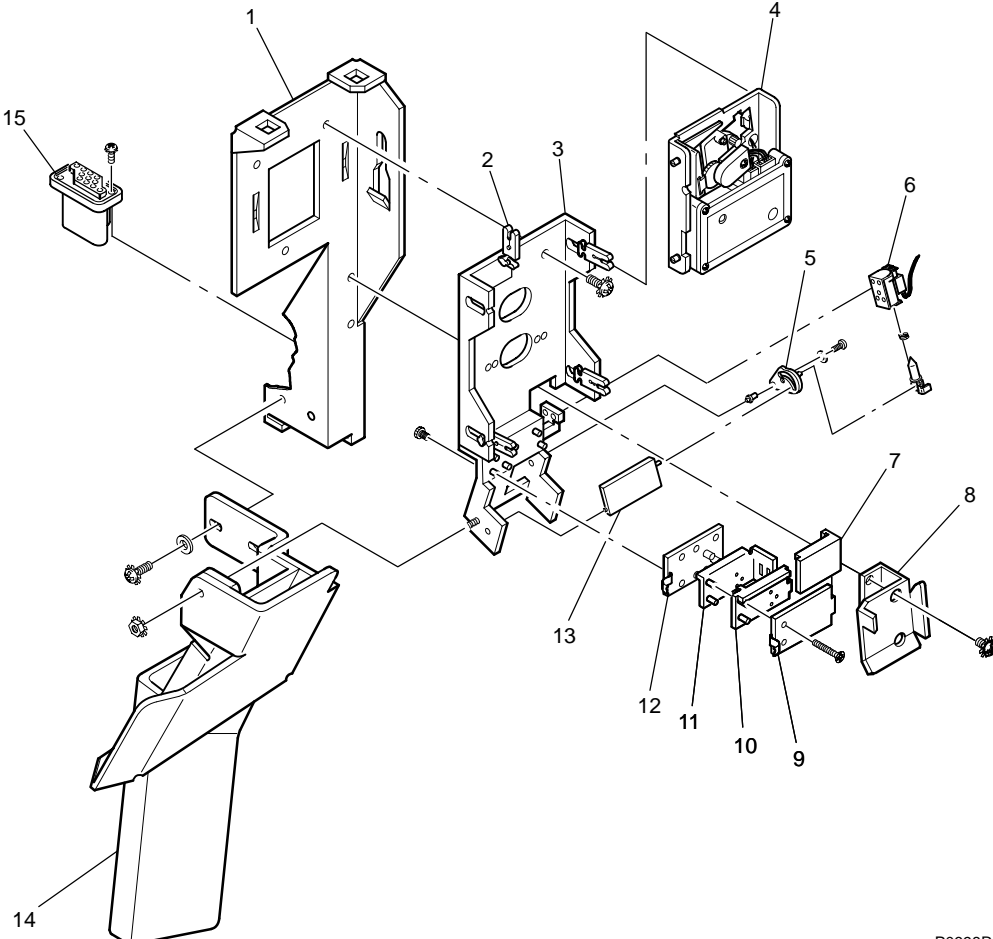


123001-9A

COIN-IN HANDLING – SMALL DENOMINATION

Fig. No.	Part No.	Description	Qty.	Fig. No.	Part No.	Description	Qty.
ASSY	599-480-00	COIN-IN ASSEMBLY – COMPARITOR, DC F/T	1	ASSY	753-066-00	BOARD ASSEMBLY, ABC OPTIC EMITTER/DETECTOR	1
1	143-150-00	CHASSIS, ASSEMBLY – UNIVERSAL, DIB	1	9	753-064-00	BOARD, PC, ABC OPTIC, DETECTOR/TRANSLATOR	1
2	446-032-00	CLIP – COMPARITOR/ACCEPTOR, UNIVERSAL COIN SYS	4			ASSEMBLY	1
3	143-058-00	CHASSIS, COIN HANDLING DIB II	1	–	417-001-99	SCREW, TAP, AB, PH PAN #4 X 1/2	3
–	419-510-94	SCREW – SEMS, PH PAN, 6-32 X 1/4	3	10	584-054-02	INSERT, 5-CENT, .816-.898" DIAMETER	1
				–	584-054-11	INSERT – .899-1.055, (25 CENT/SBA) V2	1
4	570-189-90	ACCEPTOR – COMPARITOR, CC-16, 3-PIN, RFS, W/L-BAR	1	–	584-054-05	INSERT – 1.176-1.335" DIAMETER (50 CENT)	1
4	570-188-90	ACCEPTOR - COMPARITOR, CC-16, 14G, RFS,W/L-BAR	1				
5	659-123-00	CAM – DIVERTER, DC COIN HANDLING	1	11	649-126-00	HOUSING – ENCODER, UNIVERSAL COIN	1
–	439-058-00	WASHER-FLAT, DC DIVERTER CAM	1	12	753-065-00	PCB, ABC OPTIC EMITTER	1
–	411-002-91	SCREW MACHINE PH PAN 4-40 X 5/8	1	–	619-054-90	CABLE, FLEXSTRIP, 4 CONN, 1-INCH	1
–	312-056-00	CAM STANDOFF, DC COIN HANDLING	1				
6	450-036-00	SOLENOID ASSEMBLY – 24VDC, CNT, W/DVDT	1	13	576-035-00	DIVERTER, UNIVERSAL COIN SYSTEM	1
–	450-035-90	SOLENOID – 24VDC, CONT C-6, W/SLOT	1	14	573-266-00	CHUTE – HOPPER/DROP F/T, PE+, DIB	1
–	331-060-00	SPRING – COMPRESSION, DC COIN SYSTEM	1	–	419-510-96	SCREW, SEMS PH PAN 6-32 X 3/8	2
–	411-002-91	SCREW MACHINE PH PAN 4-40 X 5/8	1	–	430-003-95	WASHER, FLAT, STEEL #6, TYPE B/N	2
7	688-516-00	COVER – OPTIC BOARD	1	–	424-003-95	NUT, KEP STEEL 6-32	1
8	573-373-00	CHUTE – REJECT, PE+, DIB	1	15	210-062-90	RECEPTACLE, 19-PIN CRIMP	1
–	419-510-94	SCREW – SEMS, PH PAN, 6-32 X 1/4	2	–	419-520-92	SCREW – SEMS, PH PAN, 8-32 X 1/4	2
				–	600-147-00	HARNESS, COIN HANDLING, COIN COMPARITOR, DIB	1

COIN-IN HANDLING – SMALL DENOMINATION

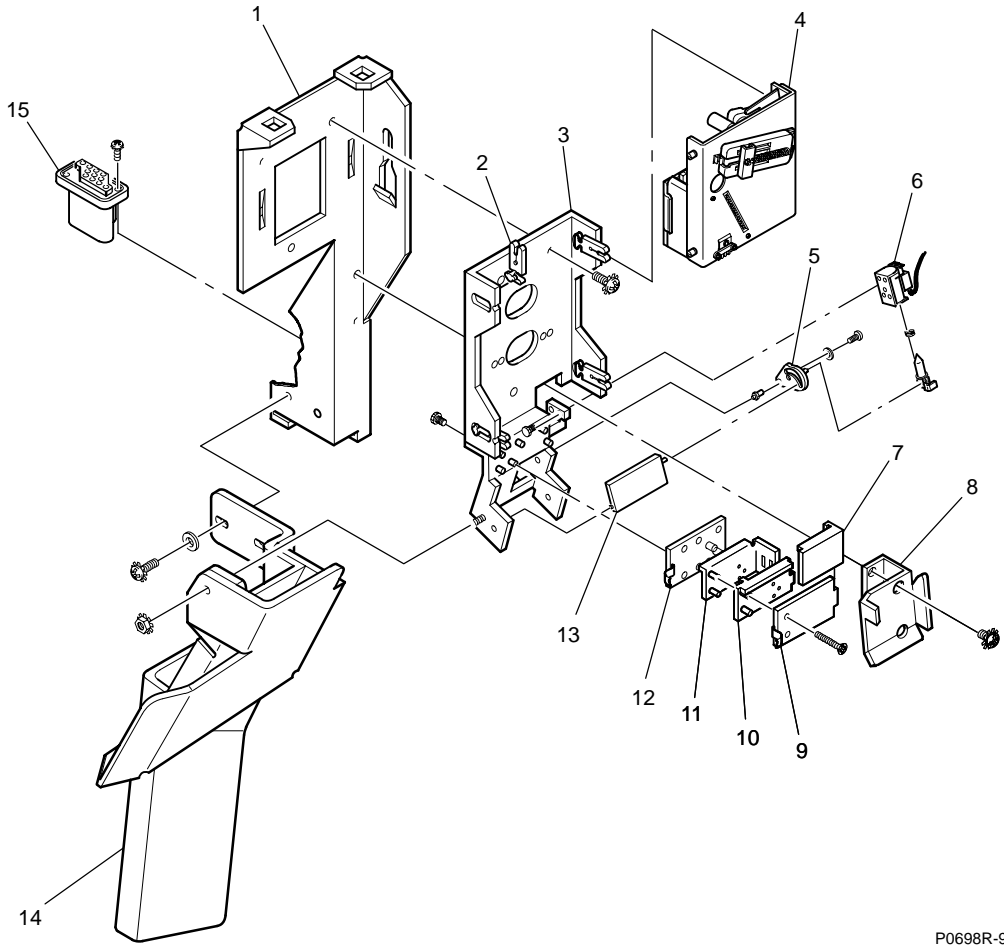


P0698R-10F

COIN-IN HANDLING – LARGE DENOMINATION

Fig. No.	Part No.	Description	Qty.	Fig. No.	Part No.	Description	Qty.
ASSY	599-480-00	COIN-IN ASSEMBLY – COMPARITOR, DC F/T	1	ASSY	753-066-00	BOARD ASSEMBLY, ABC OPTIC EMITTER/DETECTOR	1
1	143-150-00	CHASSIS, ASSEMBLY – UNIVERSAL, DIB	1	9	753-064-00	BOARD, PC, ABC OPTIC, DETECTOR/TRANSLATOR ASSY	1
2	446-032-00	CLIP – COMPARITOR/ACCEPTOR, UNIVERSAL COIN SYS	4	–	417-001-99	SCREW, TAP, AB, PH PAN #4 X 1/2	3
3	143-058-00	CHASSIS, COIN HANDLING DIB II	1	10	584-054-07	INSERT – 1.458-1.575” (IKE/40MM)	1
–	419-510-94	SCREW – SEMS, PH PAN, 6-32 X 1/4	3	11	649-126-00	HOUSING – ENCODER, UNIVERSAL COIN	1
4	570-182-90	ACCEPTOR – COMPARITOR, CC-33D, 3-PIN, W/L-BAR	1	12	753-065-00	PCB, ABC OPTIC EMITTER	1
5	659-123-00	CAM – DIVERTER, DC COIN HANDLING	1	–	619-054-90	CABLE, FLEXSTRIP, 4 CONN, 1-INCH	1
–	439-058-00	WASHER-FLAT, DC DIVERTER CAM	1	13	576-035-00	DIVERTER, UNIVERSAL COIN SYSTEM	1
–	411-002-91	SCREW MACHINE PH PAN 4-40 X 5/8	1	14	573-266-00	CHUTE – HOPPER/DROP F/T, PE+, DIB	1
–	312-056-00	CAM STANDOFF, DC COIN HANDLING	1	–	419-510-96	SCREW, SEMS PH PAN 6-32 X 3/8	2
6	450-036-00	SOLENOID ASSEMBLY – 24VDC, CNT, W/DVDT	1	–	430-003-95	WASHER, FLAT, STEEL #6, TYPE B/N	2
–	331-060-00	SPRING – COMPRESSION, DC COIN SYSTEM	1	–	424-003-95	NUT, KEP STEEL 6-32	1
–	450-035-90	SOLENOID – 24VDC, CONT C-6, W/SLOT	1	15	210-062-90	RECEPTACLE, 19-PIN CRIMP	1
–	411-002-91	SCREW MACHINE PH PAN 4-40 X 5/8	1	–	419-520-92	SCREW – SEMS, PH PAN, 8-32 X 1/4	2
7	688-516-00	COVER – OPTIC BOARD	1	–	600-147-00	HARNESS, COIN HANDLING, COIN COMPARITOR, DIB	1
8	573-373-00	CHUTE – REJECT, PE+, DIB	1				
–	419-510-94	SCREW – SEMS, PH PAN, 6-32 X 1/4	2				

COIN-IN HANDLING – LARGE DENOMINATION



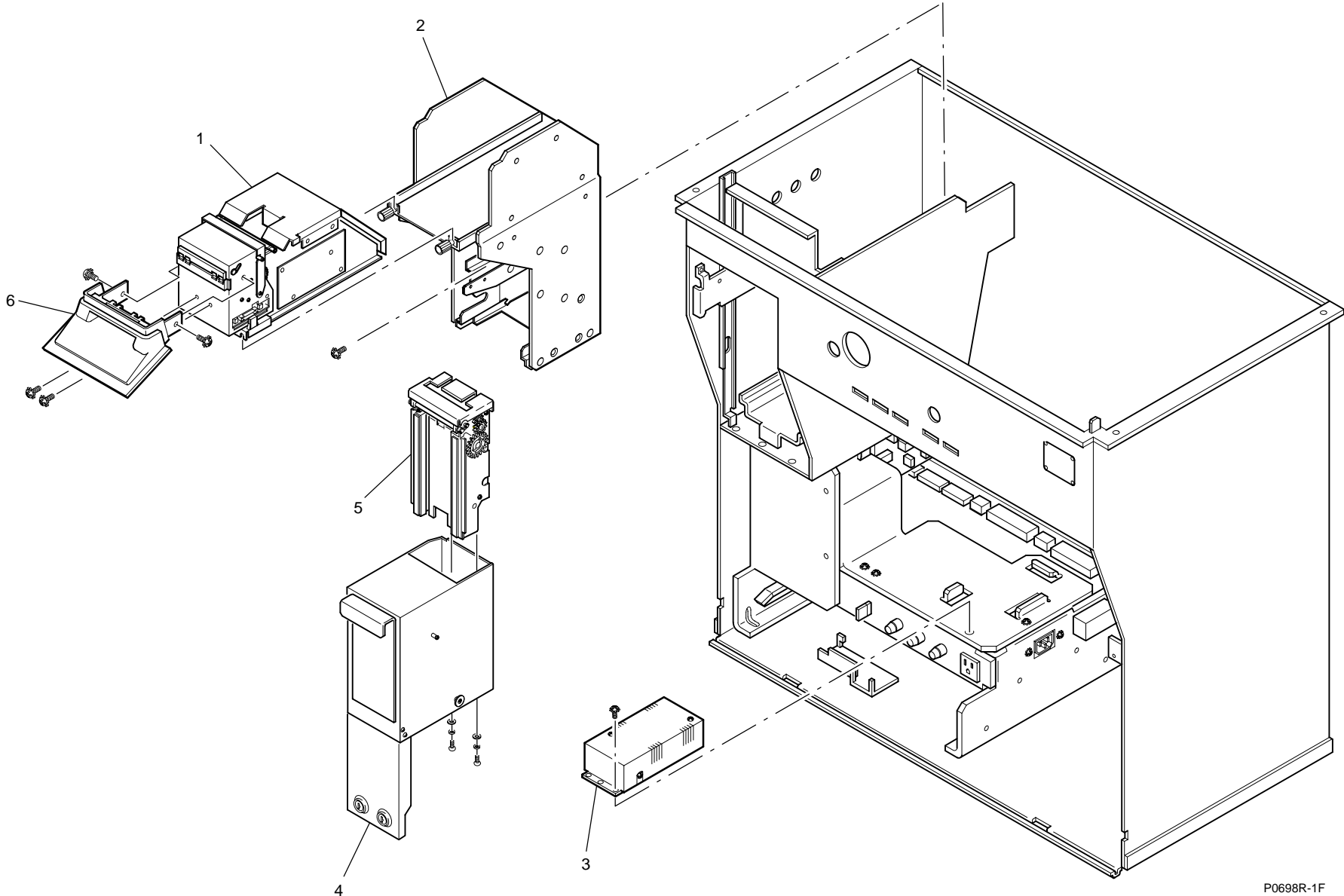
P0698R-9F

BILL ACCEPTOR

Fig. No.	Part No.	Description	Qty.	Fig. No.	Part No.	Description	Qty.
ASSY	625 285 90	ACCEPTOR ASSEMBLY, DBV145 SS, ID023, V3.00	1	KIT	915 616 00	KIT, DBV SS, B/A SERVICE PARTS	1
ASSY	625 181 90	ACCEPTOR ASSEMBLY, DBV145 SS, ID022, V3.00	1	-	803 076 90	CAM, DBV, SS, CASH BOX LOCK	1
-	419 018 91	SCREW, SEMS, PH PAN, M3 X 8	2	-	769 111 90	BOARD ASSEMBLY, CPU, W/O ROM, DBV45SS	1
1	625 216 90	TRANSPORT ASSEMBLY - SS B/A, CAP HDWR	1	-	769 113 90	BOARD ASSEMBLY, VALIDATOR LED, DBV45 SU, SH	1
-	625 187 90	VALIDATOR, DBV45/145 SS, W/O ROM	1	-	459 020 90	SOLENOID, TRANSPORT LEVER, DBV SS	1
2	REF	CHASSIS ASSEMBLY	1	-	600 044 90	HARNESS, ACCEPTOR, CUP/STACKER BOARD, DBV SS V2	1
3	408 070 90	POWER SUPPLY ASSEMBLY, 15W DBV/CBA	1				
-	424 015 90	NUT, KEP, STEEL, M3	2	-	358 024 90	MOTOR ASSEMBLY, TRANSPORT/STACKER, DBV SS	1
4	500 179 00	BOX, CASH, W/HANDLE, BILL ACCEPTOR, DBV SS	1	-	352 016 90	BELT, TOP TRANSPORT, 63T, DBV SS	1
-	850 377 00	LABEL, DBV/SS ACPTR. BOX UP, ORN	1	-	352 017 90	BELT, BOTTOM TRANSPORT, 118T, DBV SS	1
				-	352 015 90	BELT, STACKER BOX TRANS, DBV SS	1
5	625 191 90	STACKER ASSEMBLY, W/O BOX, DBV SS	1	-	659 149 90	SENSOR, STACKER BOX, DETECTOR, DBV SS	1
6	578 516 00	ENTRY - BILL ACCEPTOR, FLAT TOP, IBA	1	-	659 150 90	SENSOR, STACKER BOX, EMITTER, DBV SS	1
-	419 018 91	SCREW, SEMS, PH PAN M3 X 8	4	-	659 136 90	SENSOR, STACKER LEVER, DBV SU	1
				-	769 112 90	BOARD ASSEMBLY, POWER SUPPLY, 15W, DBVCBA	1
				-	769 114 90	BOARD ASSEMBLY, INTERFACE, SMPKG, DBVCBA	1
				-	352 014 90	BELT, VALIDATOR TRANSPORT, BLK	1
				-	358 025 90	MOTOR ASSEMBLY, VALIDATOR, DBV45 SS	1
				-	659 140 90	GEAR, ENCODER, VALIDATOR MOTOR, DBV SU, SS	1
				-	659 141 90	SENSOR, ENCODER, VALIDATOR, DBV SU, SH, SS	1
				-	419 043 90	SCREW, SPECIAL, THUMB, M3, DBV SS V2	1
				-	446 068 90	CLIP, HARNESS, W/ADHESIVE, DBV V2	1
				-	310 084 90	INSULATOR, DBV/SS, CASH BOX OPTIC BOARD	1
				-	625 207 90	GEAR ASSEMBLY, STACKER DRIVE, DBV SS, BA	1
				-	609 999 90	HARNESS, STACKER OPTICS, DBV45 SS, BA	1
				-	915 652 90	KIT, B/A TEST/ADJUST, DBV-45	1

Note: Refer to the Top Panel list for additional bill entry components.

BILL ACCEPTOR

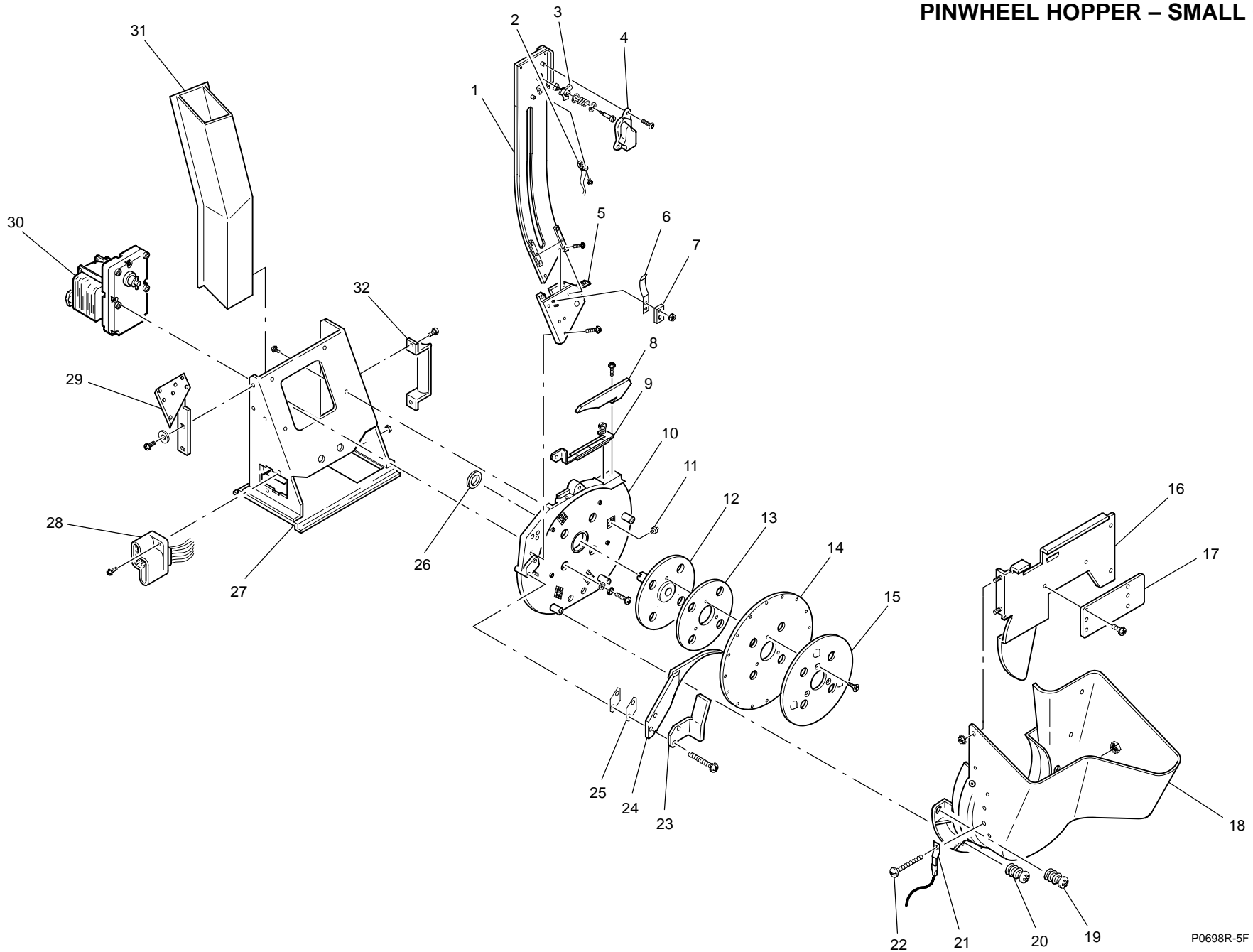


P0698R-1F

PINWHEEL HOPPER – SMALL COIN

Fig. No.	Part No.	Description	Qty.	Fig. No.	Part No.	Description	Qty.
ASSY	797 255 00	HOPPER, ESCALATOR, F/T IBA, 5 CENT	1	16	632 037 00	BAFFLE, HOPPER BOWL	1
ASSY	797 255 01	HOPPER, ESCALATOR, F/T IBA, 25 CENT	1	–	424 008 99	NUT, KEP, STEEL, 10-32	4
1	625 169 00	TOWER, ROTARY FLAG, 5 CENT	1	17	589 597 00	PLATE, BAFFLE	1
–	625 292 00	TOWER, ROTARY OPTIC, .96 X .07, 25 CENT	1	–	419 510 94	SCREW, SEMS, PH PAN, 6-32 X 1/4	2
2	379 047 90	OPTIC ASSEMBLY, ROTARY COUNTER, AC	1	KIT	915 354 00	KIT – BOWL ASSEMBLY, 25 CENT, ESC. FT/IBA	1
–	419 510 90	SCREW, SEMS, PH PAN, 4-40 X 1/4	1	18	620 410 00	BOWL ASSEMBLY, SMALL COIN, FT IBA	1
3	666 006 08	FLAG ASSEMBLY, ROTARY COUNTER, 5 CENT	1	–	850 095 00	LABEL, HOPPER COIN LEVEL, 5/25 CENT	1
3	666 006 03	FLAG ASSEMBLY, ROTARY COUNTER, 25 CENT	1	19	331 052 00	SPRING, COMPRESSION, HEAVY, .058W	2
–	666 002 00	ROTOR, COIN COUNTING	1	20	331 051 00	SPRING, COMPRESSION, LIGHT	2
–	439 074 00	WASHER, KEYED, ROTOR FLAG	1	–	411 009 96	SCREW, MACHINE, P. PAN, 10-32 X 5/8	4
–	331 125 90	SPRING, COMPRESSION, .312 OD X .44L	1	21	216 095 90	TERMINAL, .250 TAB, 45 DEG., SGL., MALE	1
–	439 071 90	WASHER, BRONZE, .257 X .375 X .020	1	22	411 911 90	SCREW, MACHINE, RD, BRS, 10-32 X 1-1/4	1
–	419 031 00	SCREW, SHOULDER, 6-32 X 9/16 X .156	1	–	424 008 99	NUT, KEP, STEEL, 10-32	1
4	688 800 00	COVER, OPTIC, ROTARY ESCALATOR HOPPER	1	23	574 038 00	DEFLECTOR, COIN, HOPPER BOWL	1
–	413 808 94	SCREW, MACHINE, SOCKET, BUT., 6-32 X 1/4	2	–	419 530 92	SCREW, SEMS, PH PAN, 10-32 X 1 1/2	2
5	589 017 00	PLATE, MOUNTING, 5 CENT	1	24	585 082 00	KNIFE, HOPPER, 5 CENT	1
–	655 932 00	PLATE, MOUNTING, 25 CENT	1	–	585 038 00	KNIFE, HOPPER, 25 CENT	1
–	284 014 00	SHIM, ESCALATOR TOWER (QTY. AS REQUIRED)	2	25	284 008 00	SHIM, KNIFE, .010 THICK (QTY. AS REQUIRED)	2
–	419 520 92	SCREW, SEMS, PH PAN, 8-32 X 1/2	3	26	582 050 00	RING, RETAINING, HUB ASSEMBLY	1
–	419 520 91	SCREW, SEMS, PH PAN, 8-32 X 3/8	5	27	647 263 00	FRAME, ESCALATOR HOPPER, AC/DC	1
–	411 004 92	SCREW, MACHINE, P. PAN, 6-32 X 5/8	4	28	210 062 90	RECEPTACLE, 19-PIN CRIMP, AMP R&P	1
6	681 010 00	WIPER, COIN, ELBOW, 5/25 CENT	1	–	216 127 90	TERMINAL, CRIMP, 20-PIN, 24, AMP R&P	1
7	661 024 00	RETAINER, SPRING	1	–	419 520 92	SCREW, SEMS, PH, PAN, 8-32 X 1/2	2
–	424 001 95	NUT, KEP, STEEL, 4-40	2	29	635 056 00	BRACE, ESCALATOR, NARROW, W/NUTS	1
8	574 049 00	DEFLECTOR, COIN ESCALATOR HOPPER	1	–	419 530 91	SCREW, SEMS, PH PAN 10-32 X 1/2	2
–	419 530 90	SCREW, SEMS, PH PAN, 10-32 X 3/8	1	–	430 008 91	WASHER, FLAT, STEEL, #10, TYPE B/N	2
9	681 042 00	WIPER ASSEMBLY, CHMFRD, 5 CENT	1	30	350 031 90	MOTOR, HOPPER, 25 RPM, HVY DUTY, U.L.	1
10	649 094 00	HOUSING ASSEMBLY, ESCALATOR HOPPER	1	–	411 010 94	SCREW, MACHINE, PH P., 10-32 X 1-1/2	4
–	419 530 90	SCREW, SEMS, PH PAN, 10-32 X 3/8	4	–	431 008 99	WASHER, LOCK, INTERNAL, STEEL #10	4
11	390 012 00	BEARING ASSEMBLY, WITH SHAFT	4	–	430 008 99	WASHER, FLAT, STEEL, #10, TYPE B/N	4
12	582 045 00	HUB, HOPPER, PINWHEEL ASSEMBLY	1	–	330 123 90	SPRING, BREAK ARM, HOPPER MOTOR, SPARE	1
13	284 016 00	SHIM, HOPPER (QTY. AS REQUIRED)	1	–	605 064 01	HARNES, HOPPER ESCALATOR, S/T	1
14	588 046 00	PINWHEEL, HOPPER, 20-PIN ESCALATOR, 5 CENT	1	31	598 035 00	TUBE, DROP, FLAT TOP BAR	1
–	588 038 00	PINWHEEL, HOPPER, 15-PIN ESCALATOR, 25 CENT	1	–	424 006 98	NUT, KEP, STEEL, 8-32	2
15	680 055 00	SHELFWHEEL, 5 CENT	1	32	380 011 00	HANDLE, HOPPER	1
–	411 009 91	SCREW, MACHINE, P. PAN, 10-32 X 3/8	3	–	419 530 90	SCREW, SEMS, PH PAN, 10-32 X 3/8	2
15	680 040 20	SHELFWHEEL, 25 CENT	1				
–	411 109 93	SCREW, MACHINE, PH F., 10-32 X 3/8	3				

PINWHEEL HOPPER – SMALL COIN

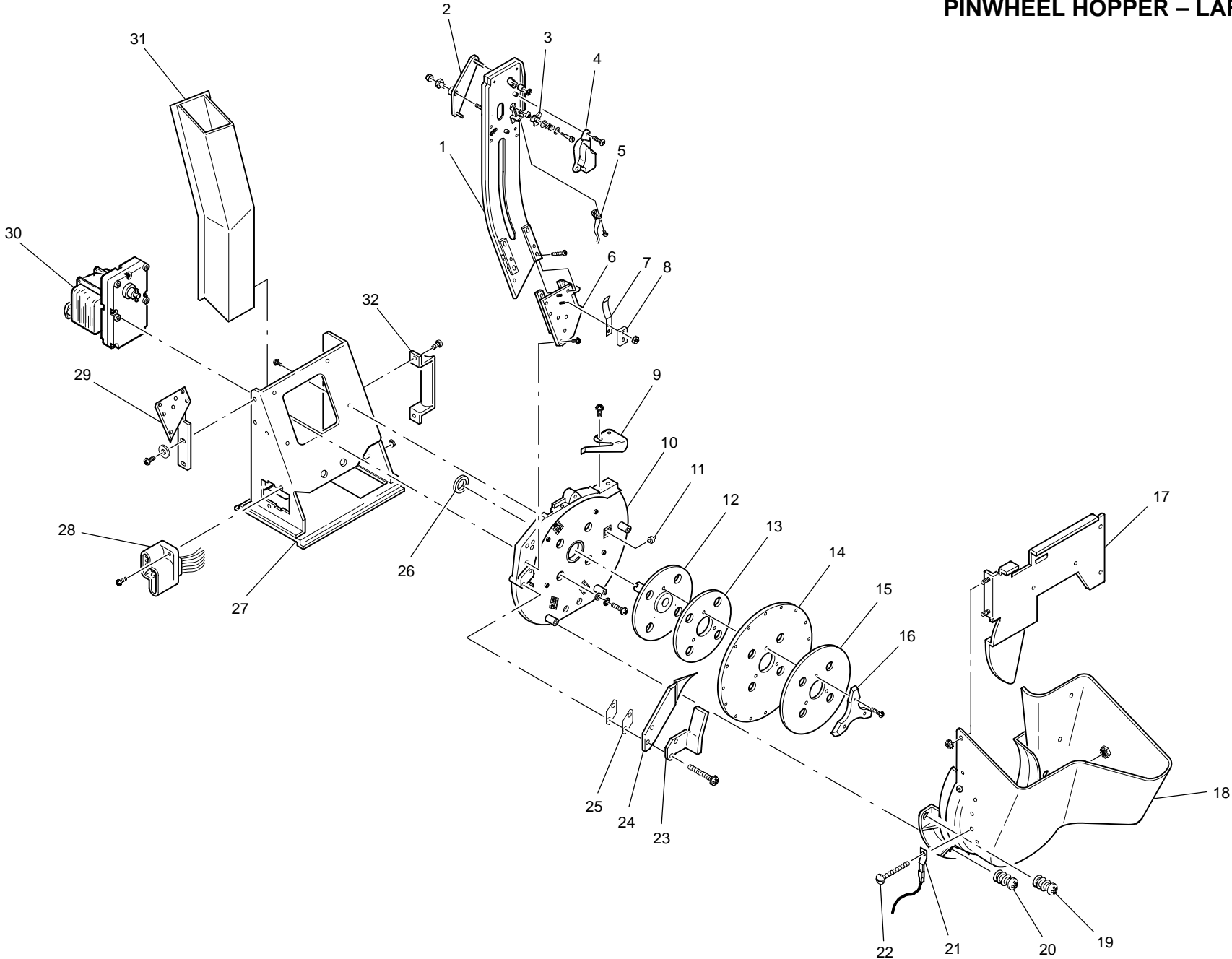


P0698R-5F

PINWHEEL HOPPER – LARGE COIN

Fig. No.	Part No.	Description	Qty.	Fig. No.	Part No.	Description	Qty.
ASSY	797 255 02	HOPPER, ESCALATOR, S/T, DIB, DOLLAR	1	16	572 008 00	AGITATOR, LOW PROFILE, (DOLLAR ONLY)	1
1	625 166 00	TOWER, ROTARY FLAG, STD. DOLLAR	1	-	411 009 95	SCREW, MACHINE, PH PAN, 10-32 X 1/2	3
-	411 004 92	SCREW, MACHINE, PH PAN, 6-32 X 5/8	5	17	632 037 00	BAFFLE, HOPPER BOWL	1
2	631 150 00	ARM, INTERLOCK, DOLLAR, ROTARY FLAG	1	-	424 008 99	NUT, KEP, STEEL, 10-32	3
-	665 007 04	ROLLER, .23 ID X .31 OD X .375 L	1	KIT	915 354 01	KIT, BOWL ASSEMBLY, IKE	1
-	392 007 90	BEARING, NYLON, .188 X .232 X .187	2	18	620 410 01	BOWL ASSEMBLY, DOLLAR	1
-	447 073 90	E-RING, .188	1	-	850 096 00	LABEL, HOPPER COIN LEVEL, DOLLAR	1
-	439 072 90	WASHER, BRONZE, .142 X .373 X .016	1	19	331 052 00	SPRING, COMPRESSION, HEAVY, .058W	2
-	429 022 00	NUT, RETAINING, ESCALATOR	1	20	331 051 00	SPRING, COMPRESSION, LIGHT	2
-	421 003 96	NUT, LOCK, ESNA, THIN 6-32	1	-	674 181 90	SPACER, ALUMINUM, .194 ID X .38 OD X .25 LG	4
3	666 006 06	FLAG ASSEMBLY, ROTARY COUNTER, DOLLAR	1	-	411 009 96	SCREW, MACHINE, P. PAN, 10-32 X 5/8	4
-	666 002 00	ROTOR, COIN COUNTING	1	21	216 095 90	TERMINAL, .250 TAB, 45 DEG., SGL., MALE	1
-	439 074 00	WASHER, KEYED, ROTOR FLAG	1	22	411 911 90	SCREW, MACHINE, RD, BRS, 10-32 X 1-1/4	1
-	331 125 90	SPRING, COMPRESSION, .312 OD X .44L	1	-	424 008 99	NUT, KEP, STEEL, 10-32	1
-	439 071 90	WASHER, BRONZE, .257 X .375 X .020	1	23	574 038 00	DEFLECTOR, COIN, HOPPER BOWL	1
-	419 031 00	SCREW, SHOULDER, 6-32 X 9/16 X .156	1	24	585 013 00	KNIFE, HOPPER, DOLLAR	1
4	688 800 00	COVER, OPTIC ROTARY COUNTING	1	25	284 008 00	SHIM, KNIFE, .010 THICK	2
-	413 808 94	SCREW, MACHINE, SOCKET, BUT., 6-32 X 1/4	2	-	419 530 92	SCREW, SEMS, PH PAN, 10-32 X 1 1/2	2
5	379 047 90	OPTIC ASSEMBLY, ROTARY COUNTER, AC	1	26	582 050 00	RING, RETAINING, HUB ASSEMBLY	1
-	419 510 90	SCREW, SEMS, PH PAN, 4-40 X 1/4	1	27	647 263 00	FRAME, ESCALATOR HOPPER, AC/DC	1
6	589 158 00	PLATE, MOUNTING, DOLLAR	1	28	210 062 90	RECEPTACLE, 19-PIN CRIMP, AMP R&P	1
-	284 009 00	SHIM, ESCALATOR TOWER, .010 THICK	2	-	216 127 90	TERMINAL, CRIMP, 20-PIN, 24, AMP R&P	1
-	419 510 97	SCREW, SEMS, PH PAN, 6-32 X 1/2	2	-	419 520 92	SCREW, SEMS, PH, PAN, 8-32 X 1/2	2
7	681 012 00	WIPER, COIN, ELBOW, DOLLAR	1	-	424 009 99	NUT, KEP, STEEL, 10-32 (GRND FROM RECEP)	1
8	661 024 00	RETAINER, SPRING	1	29	430 008 99	WASHER, FLAT, STEEL, #10 TYPE B/N (GRND FROM REC)	1
-	424 001 95	NUT, KEP, STEEL, 4-40	2	-	635 056 00	BRACE, ESCALATOR, NARROW, W/NUTS	1
9	681 040 00	WIPER, COIN, METAL	1	-	419 530 91	SCREW, SEMS, PH PAN, 10-32 X 1/2	2
-	419 530 90	SCREW, SEMS, PH PAN, 10-32 X 3/8	2	-	430 008 99	WASHER, FLAT, STEEL, #10, TYPE B/N	2
10	649 094 00	HOUSING ASSEMBLY, ESCALATOR HOPPER	1	30	350 031 90	MOTOR, HOPPER, 25 RPM, HVY DUTY, U.L.	1
-	419 530 90	SCREW, SEMS, PH PAN, 10-32 X 3/8	4	-	411 010 94	SCREW, MACHINE, PH P., 10-32 X 1-1/2	4
11	390 012 00	BEARING ASSEMBLY, WITH SHAFT	4	-	431 008 99	WASHER, LOCK, INTERNAL, STEEL #10	4
12	582 045 00	HUB, 4 1/4, HOPER, BASIC	1	-	430 008 99	WASHER, FLAT, STEEL, #10, TYPE B/N	4
13	284 016 00	SHIM, HOPPER (QTY. AS REQUIRED)	1	-	330 123 90	SPRING, BREAK ARM, HOPPER MOTOR, SPARE	1
14	588 037 00	PINWHEEL, HOPPER, 11-PIN ESCALATOR, DOLLAR	1	-	605 064 01	HARNESS, HOPPER ESCALATOR, S/T	1
15	575 051 00	COIN DISC (SHELFWHEEL), 38MM X 13GA, DOLLAR	1	31	598 035 00	TUBE, DROP, FLAT TOP	1
				-	424 006 98	NUT, KEP, STEEL, 8-32	2
				32	380 011 00	HANDLE, HOPPER	1
				-	419 530 90	SCREW, SEMS, PH PAN, 10-32 X 3/8	2

PINWHEEL HOPPER – LARGE COIN



HOLEYWHEEL HOPPER – LARGE COIN

Fig. No.	Part No.	Description	Qty.	Fig. No.	Part No.	Description	Qty.
ASSY	797 255 06	HOPPER, ESCALATOR, S/T 1.469 X .104, H/W	1	12	339 048 00	SPRING, BEARING	2
1	350 031 90	MOTOR, HOPPER, 25 RPM, HVY DUTY, U.L., UNIV.	1	13	661 024 00	RETAINER, SPRING	1
-	411 010 94	SCREW, MACHINE, PH P., 10-32 X 1-1/2	4	-	424 001 95	NUT, KEP, STEEL, 4-40	2
-	431 008 99	WASHER, LOCK, INTERNAL, STEEL #10	4	14	582 046 00	HUB, HOPPER, PINWHEEL, 3.50 DIAMETER	1
-	430 008 99	WASHER, FLAT, STEEL, #10, TYPE B/N	4	15	574 059 00	DEFLECTOR, DOLLAR, 3 GROOVE	1
-	330 123 90	SPRING, BREAK ARM, HOPPER MOTOR, SPARE	1	-	331 035 00	SPRING, COMPRESSION, .610 X .425 X .029	1
-	605 064 01	HARNES, HOPPER ESCALATOR, S/T	1	16	581 232 00	GUIDE, COIN	1
2	598 035 00	TUBE, DROP, FLAT TOP	1	-	331 028 90	SPRING, COMPRESSION, .30 OD X .44L X .022W	1
-	424 006 98	NUT, KEP, STEEL, 8-32	2	17	589 674 00	PLATE, BACK, DOLLAR, 3 GROOVE	1
3	380 011 00	HANDLE, HOPPER	1	-	419 520 90	SCREW, SEMS, PH PAN, 8-32 X 5/16	4
-	419 530 90	SCREW, SEMS, PH PAN, 10-32 X 3/8	2	18	284 033 00	SHIM, PINWHEEL, 2.75 DIAMETER X .01 THICK	1
4	631 150 00	ARM, INTERLOCK, DOLLAR, ROTARY FLAG	1	19	680 060 00	SHELFWHEEL, DOLLAR, H/W	1
-	665 007 04	ROLLER, .23 ID X .32 OD X .375L	1	20	588 056 00	PINWHEEL, DOLLAR, H/W	1
-	392 007 90	BEARING, NY, .188 X .232 X .187	2	21	572 022 00	LIFTER, COIN, DOLLAR, H/W	2
-	447 073 90	RING, E, .188, SHAFT	1	-	411 107 93	SCREW, MACHINE, PH F, 8-32 X 1/2	2
-	439 072 90	WASHER, BRONZE, .142 X .373 X .016	1	22	680 060 00	SHELFWHEEL, DOLLAR, H/W	1
-	429 022 00	NUT, RETAINING, ESCALATOR	1	-	411 009 99	SCREW, MACHINE, PH PAN, 10-32 X 7/8	3
-	421 003 96	NUT, LOCK, ESNA, THIN, 6-32	1	23	632 037 00	BAFFLE, HOPPER BOWL	1
5	625 167 00	TOWER, ROTARY FLAG, H/W, DOLLAR	1	-	424 008 99	NUT, KEP, STEEL, 10-32	4
6	666 006 06	ASSEMBLY, FLAG, ROTARY, KEYED	1	24	620 411 00	BOWL, HOPPER, ESCALATOR, H/W, FLAT TOP	1
-	666 002 00	ROTOR, COIN COUNTING	1	-	419 530 91	SCREW, SEMS, PH PAN, 10-32 X 1/2	4
-	419 031 00	SCREW, SHOULDER, 6-32 X 9/16 X .156 OD	1	-	430 008 99	WASHER, FLAT, STEEL #10, TYPE B/N	4
-	439 074 00	WASHER, KEYED, ROTOR FLAG	1	25	216 095 90	TERMINAL, .250 TAB, 45 DEG., SGL., MALE	1
-	331 125 90	SPRING, COMPRESSION, .312 OD X .20L	1	26	411 911 90	SCREW, MACHINE, RD, BRS, 10-32 X 1-1/4	1
-	439 071 90	WASHER, BRONZE, .257 X .375 X .020	1	-	424 008 99	NUT, KEP, STEEL, 10-32	1
7	688 800 00	COVER, OPTIC, ROTARY	1	27	585 091 00	KNIFE, ESCALATOR, DOLLAR, H/W	1
-	413 808 94	SCREW, MACHINE, SOCKET, BUT., 6-32 X 1/4	2	-	411 108 94	SCREW, MACHINE, PH F, 8-32 X 1/4	2
8	379 047 90	OPTIC, ASSEMBLY, ROTARY COUNTER, AC	1	28	649 122 02	HOUSING, HOPPER, H/W	1
-	419 510 90	SCREW, SEMS, PH PAN, 4-40 X 1/4	1	-	419 530 90	SCREW, SEMS, PH PAN, 10-32 X 3/8	4
9	589 636 00	PLATE, MOUNTING, DOLLAR, H/W	1	29	582 050 00	RING, RETAINING, HUB ASSEMBLY	1
-	411 004 92	SCREW, MACH, PH PAN, 6-32 X 5/8	5	30	647 254 00	FRAME, DC ESCALATOR HOPPER, H/W	1
-	424 003 95	NUT, KEP, STEEL, 6-32	5	31	210 062 90	RECEPTACLE, 19-PIN CRIMP, AMP R&P	1
10	390 009 90	BEARING, BALL, .375	1	-	216 127 90	TERMINAL, CRIMP, 20-PIN, 24, AMP R&P	1
11	213 048 00	HOLDER, BEARING	1	-	419 520 92	SCREW, SEMS, PH, PAN, 8-32 X 1/2	2

HOLEYWHEEL HOPPER – LARGE COIN

