

SERVICE AND OPERATION MANUAL

MTG- XX02SN/SE **OPEN FRAME SVGA COLOR MONITORS**

MTG-2902SN/SE : 29INCH, FST

MTG-3302SN/SE : 33INCH, FST

MTG-3802SN/SE : 38INCH, FST



Information in this publication current as of Jun, 2003.

Information subject to change as display technology advance.

This publication produced by TOVIS Engineering Division.


This monitor has been designed and manufactured to deliver high performance video. For continued peak Performance use safe operation, only high quality TOVIS replacement parts or their exact specified Equivalent When servicing.

SAFETY PRECAUTIONS AND WARNINGS

Service Warning

This display contains HIGH VOLTAGE capable of delivering LETHAL quantities of energy. Service should only be attempted by trained personnel familiar with the potential dangers inherent with voltage equipment.

Safety Related Component Warning

Certain components used in TOVIS color monitors are critical for safe operation of the display. These parts Number are marked by () in the parts list and on the schematic diagram it is essential that these Safety critical components be replaced only with exactly specified components to prevent the Possibility of excessive X-radiation emission, electrical shock, fire, or premature component failure.

Modifying the original design without written approval from TOVIS is expressly forbidden, will void the original Parts and labor warranty, and may result in creating a hazardous situation.

X-RADIATION WARNING

COMPONENTS WHICH MAY AFFECT POTENTIAL EXCESS EMISSION OF X-RADIATION IN THE HORIZONTAL DEFLECTION AND HIGH VOLTAGE CIRCUITS (INCLUDING THE PICTURE TUBE) ARE TO BE USE ONLY TYPE AND RATING OF REPLACEMENT COMPONENT AS SHOWN IN THE PARTS LIST.

1. The only potential source of X-radiation emission is the picture tube. When the high voltage and horizontal deflection circuits are operating correctly there is no possibility of excess X- radiation emission. NEVER attempt to modify these circuits.
2. Periodically check the high voltage with a reliably calibrated meter for values not in excess of Manufacturer's recommendations. See high voltage Shut-down Circuit, page 4, for further details.

CRT Warning

All picture tubes used in TOVIS monitors are equipped with an integral implosion protection system.

The picture Tube is, however, a highly evacuated component whose outside surfaces are subject to strong external forces. Care must be exercised so as not to bump or scratch the tube during installation or servicing as this may cause the tube to implode resulting in possible personal injury and property damage. Shatter-proof goggles must be worn by Individuals while handling the CRT or installing the display in the cabinet. Do not handle The CRT by the neck.

1. Always ensure the high voltage at the anode cap is fully discharged prior to handling or service.
2. Replace picture tube only with same type and number.

Product Safety and Service Guidelines

1. Service should be performed only after reading all of the warnings and precautions in this manual and as Labeled on the CRT and chassis.
2. Where a short circuit has occurred, replace all components that indicate evidence of overheating or poor Connection on all plastic connectors.
3. Inspect wiring for frayed leads and damaged insulation when service is required, observe original lead Dress is followed as from the factory, especially in the high voltage circuitry area.
4. All protective devices must be reinstalled per original design.

PERFORMANCE AND OPERATING DATA

1. Power Supply

- *Power Input: Auto-Doubler
90VAC ~ 132VAC, 50/60Hz
182VAC ~ 264VAC, 50/60Hz
- *Fuse Rating: 250V, 50T 3.15A
- *Surge Current : 27A Peak (at 100VAC)
- *Power Consumption:

Size	29"	33"	38"
W(Normal)	130	140	150

2. Signal Input

- *Video: RGB Analog,
VGA Positive Signal (0.7V p-p / 75ohm)
EGA 1.4Vp-p
- *Sync: TTL Level, Positive or Negative Pulse
Separated 1 ~ 5Vp-p
Composite 1 ~ 5Vp-p
- *Horizontal Scan: 22KHz ~ 40KHz
- *Vertical Scan: 47Hz ~ 120Hz
- *Resolution-Mode

Hf	Vf	Resolution	H Range	V range
25KHz	60Hz	EGA1	22 ~ 25.9	58 ~ 62
26KHz	60Hz	EGA2	26 ~ 27.9	58 ~ 62
31KHz	60Hz	640x480	28 ~ 32.9	58 ~ 62
35KHz	56Hz	800x600	33 ~ 35.9	54 ~ 58
38KHz	60Hz	800x600	36 ~ 40.9	58 ~ 62

3. Picture Tube

The Cathode Ray Tube shall be a LG Normal & Dyna-Flat or equivalent

Size	Dot Pitch	Phosphor	P/N
29 FST	0.82~1.1(H)mm	P22	A68QBC230X
33 FST	0.85~1.1(H)mm	P22	A80QCF340X
38 FST	1.0(H) mm	P22	A90PHT55X

4. Pincushion

- 5% Maximum (All Brightness)

5. MTBF

- 20,000 Hours Minimum

6. Leakage Current

- To chassis ground, at 220VAC, 50Hz (Line/Neutral in common)
- 0.195mA Maximum

7. High Pot

- Line/Neutral in common to secondary/chassis,
1500VAC 60Hz for 1 second
- 2.0mA Maximum, No Breakdown

8. Implosion Protection

- Provided by band and mounting lugs

9. Magnetic Shielding

- Internal

10. X-Radiation

- 0.50mR/hr Maximum

11. Mis-convergence

- Center : 0.4mm Maximum
- Corners : 2.0mm Maximum

12. Non-Linearity

Using a vertical and horizontal symmetrical cross hatch pattern to equation for non-linearity will be

Non-linearity (%) = ((largest grid minus the smallest grid) Divided by (largest grid plus the smallest grid)) times 100.

- 10% maximum

13. Temperature

- Operating: 0° ~ 40°C
- Storage: -10°C ~ 60°C
- Humidity: 10% ~ 80%(Non-condensing)

14. Degaussing

Automatic at power-up and software via control OSD sub menu "DEGAUSSING"

15. Regulation (Static)

The horizontal and vertical size will change less than 4mm for a 25% white level abrupt luminance change.

16. Display Stability for Temperature

The temperature is cycled from 25°C to 0°C, and from 25°C to 50°C the video size and centering drift will not exceed 5mm horizontally or 4mm vertically.
(Measured after a 20 min. warm-up period at 25°C)

PERFORMANCE AND OPERATING DATA

17. Monitor Test Specifications

<u>Parameter</u>	<u>Size</u>	<u>Normal</u>	<u>Tolerance</u>
H/V (0uA Beam Current)	29 FST	29.5KV	+/- 500V
	33 FST	30.0KV	
	38 FST	30.0KV	
G2	29 FST	530V	+/- 10V
	33 FST	600V	
	38 FST	450V	
Brightness	29 FST	0.4FL	+/- 0.3FL
	33 FST	0.5FL	
	38 FST	0.7FL	
Contrast (10% Window Box)	29 FST	60.0FL	+/- 5FL
	33 FST	47.0FL	
	38 FST	40.0FL	
White Balance(9300)	X: 0.281		+/- 0.015
	Y: 0.311		+/- 0.015
White Balance(6500)	X: 0.313		+/- 0.015
	Y: 0.329		+/- 0.015

*Test Mode: VGA 640 x 480(Fh: 31KHz, Fv: 60Hz)

*Signal: BSG-170 (BARO)

18. WARRANTY

Manufacturer warranty 2 years parts and labor.
(Except on C.R.T)

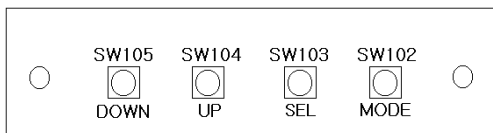
USER ADJUSTABLE CONTROLS

There are four switches on the control panel. Adjustable controls allow the best display status for individual preferences

Key Function

- ① MODE
*MODE - Call the Main-Menu OSD.
- ② SEL/DEGAUSS
*SEL – Select the function (sub-Menu OSD) on the Main- Menu OSD.
*DEGAUSS – Do degaussing in state that the OSD isn't displayed.
- ③ DOWN/UP
*When the Main-Menu is displayed, can search each function using these keys.
*When the Sub-Menu is displayed (after select the function), can change each state of the screen using these keys.

O.S.D Control Sub-P.C.B



O.S.D CONTROL METHOD

1) Control items.

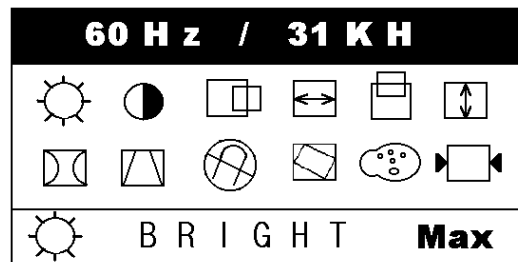
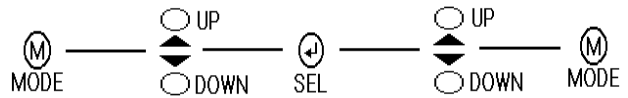
Location	Adjustment Method	Function
SUB PCB	OSD Control	Brightness Contrast Horizontal Position Horizontal-Size Vertical Position Vertical-Size Pincushion Trapezoid Degaussing Rotation Color Recall
MAIN PCB VR control	VR401 VR402 VR901 FBT	Sub-Bright Sub H-size High Voltage Focus and Screen

OSD Controls

: User's control.

A. BRIGHTNESS ADJUSTMENT

- 1) Press the "MODE" key then Main-Menu OSD come out as below Figure.
- 2) Search "BRIGHTNESS" sub-menu using "UP/DOWN" key on the Main-Menu OSD.
- 3) Select the "BRIGHTNESS" by pressing "SEL" key. Then the "BRIGHTNESS" Sub-Menu OSD comes out as below figure.
- 4) Adjust Brightness as much as you want using "UP/DOWN" key.
- 5) After finish the Brightness adjust, Press the "MODE" key then the OSD goes back to Main-Menu.
- 6) If you want to adjust other function (sub-menu), Search your wanting sub-menu like "CONTRAST" using "UP/DOWN" keys and then adjusts as same way as item 3), 4) and 5).
- 7) Press the "MODE" key again to finish the adjustment then the OSD disappeared.



- B. CONTRAST** Adjusted as same way as above
- C. H.POSITION** Adjusted as same way as above
- D. H-SIZE** Adjusted as same way as above
- E. V.POSITION** Adjusted as same way as above
- F. V-SIZE** Adjusted as same way as above
- G. PINCUSHION** Adjusted as same way as above
- H. TRAPEZOID** Adjusted as same way as above
- I. ROTATION** Adjusted as same way as above

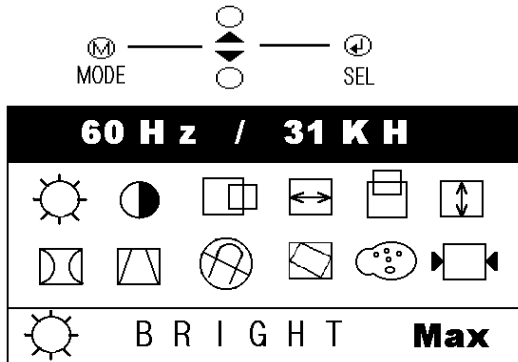
J. DEGAUSSING

- 1) Press the "MODE" key then Main-Menu OSD come out as below Figure.
- 2) Search "DEGAUSSING" sub-menu using "UP/DOWN" key on the Main-Menu OSD.
- 3) Select the "DEGAUSSING" by pressing "SEL" key. Then demagnetize the picture tube by degaussing coil.

USER ADJUSTABLE CONTROLS

K. COLOR ADJUSTMENT

Press the "MODE" key then Main-Menu OSD come out as below figure.



COLOR1	COLOR2	USER
RED		50
GRE		50
BLU		50

1) Search "CG" sub-menu using "UP/DOWN" key on the Main-Menu OSD.

- 2) Select the "COLOR" by pressing "SEL" key, then the color Sub-Menu OSD comes out as below figure.
- 3) Search "USER" using "UP/DOWN" key ("COLOR1" and "COLOR2" is adjusted in factory by auto-alignment machine)
- 4) Press "SEL" key to adjust "RED", "GREEN" and "BLUE", The each "RED", "GREEN" and "BLUE" is selected by pressing the "SEL" key and selected item changes OSD color from white to it's own color as character (ex: "RED" goes to red color)
- 5) Adjust "RED", "GREEN" or "BLUE" using "UP/DOWN" key.
- 6) Press "MODE" key to finish the color adjustment then the OSD goes back to Main-Menu.
- 7) Press the "MODE" key again to finish the adjustment then the OSD disappear.

L. RECALL

When press the "RECALL" key, all user's adjustment value are erased and covered by factory adjustment value.
At first stage without any user's adjustment, The monitor set-upped by factory adjustment value.

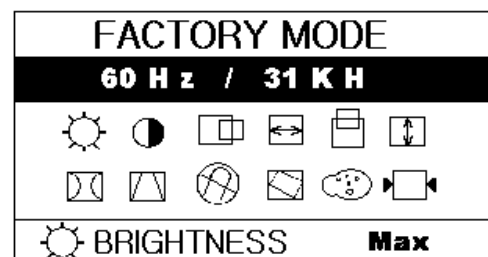
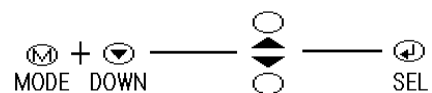
Factory control (On Screen Display)

This monitor has two-adjustment mode. One is for user's own adjust and other is for factory adjustment only. But sometimes it needs to adjust at factory adjustment mode for repair or development person. Adjustment at the factory adjustment mode needs more careful compare to user adjustment mode. Because after finish the adjustment at factory mode, If there are some mistake, can not recover to before adjustment at the user mode, If there are mistake at the user mode, can recover using "RECALL" function (refer to "L. RECALL").

A. Factory mode entering.

Press the "MODE" and "DOWN" key simultaneously until OSD comes out as below.

The OSD of factory mode is same format with user mode except color of bottom line.



B. Exit and save

- 1) After finish the adjustment; search "RECALL" using "UP/DOWN" key.
- 2) Press "SEL" key until OSD disappear then the adjusted value saved and exit from the factory mode.

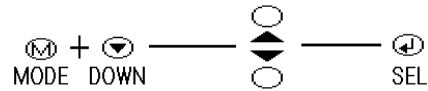
Factory control(On Screen Display)

C. Color Adjustment

All adjustment method is same with user's control mode except "COLOR".

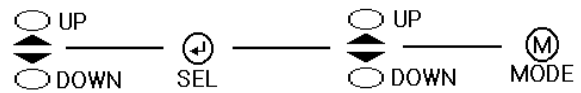
- 1) Before adjust "COLOR", "CONTRAST" and "BRIGHTNESS" have to fix maximum. (It's a TOVIS's reference condition.)
- 2) At the factory mode, search "COLOR" using "UP/DOWN" key.
- 3) Select "COLOR" by pressing "SEL" key then color sub-menu comes out as top below figure.
- 4) Search a color temperature which you want to adjust (gain or bias) using "UP/DOWN" key. ("GAIN" means high-beam area's adjustment and "BIAS" means low-beam area's adjustment.)
- 5) Select an any item as wanting by pressing "SEL" key then the OSD changes to under sub-menu as below figure.
- 6) Adjust color temperature using "UP/DOWN" and "SEL" key. ("UP/DOWN" key: change value, "SEL" key: moves item position.)
- 7) At the "GAIN" mode, "CO" means sub-contrast adjustment. Sub-contrast adjusted using "UP/DOWN" key if necessary. (To meet the white peak "ff" level.)
- 8) Press "MODE" key to finish the "GAIN" or "BIAS" adjustment.

- 9) If you want to adjust other "GAIN" or "BIAS", Repeat from item C. "Color Adjustment".
- 10) Press "MODE" key again to finish the "COLOR" Adjustment.
- 11) If you want to finish factory adjustment, Select "RECALL" as item B. "Exit and save"



COLOR sub-menu

9300 GAIN	9300 BIAS
6500 GAIN	6500 BIAS



GAIN under sub-menu

RG	50	BG	50
GG	50		

BIAS under sub-menu

RB	50	BB	50
GB	50		

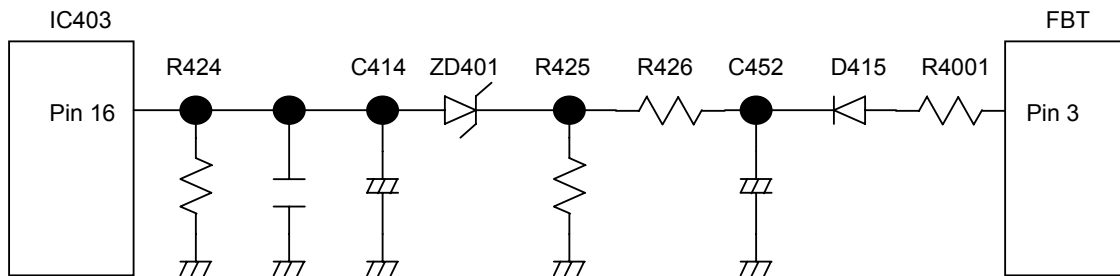
HIGH VOLTAGE SHUT-DOWN CIRCUIT

The chassis of this monitor has been designed to emit a minimum of soft X-radiation, in accordance with US DHHS rules 21 CFR, subchapter. A high voltage shut-down circuit, as shown below, guarantees horizontal oscillation shut-down should the high voltage exceed designed picture tube maximums.

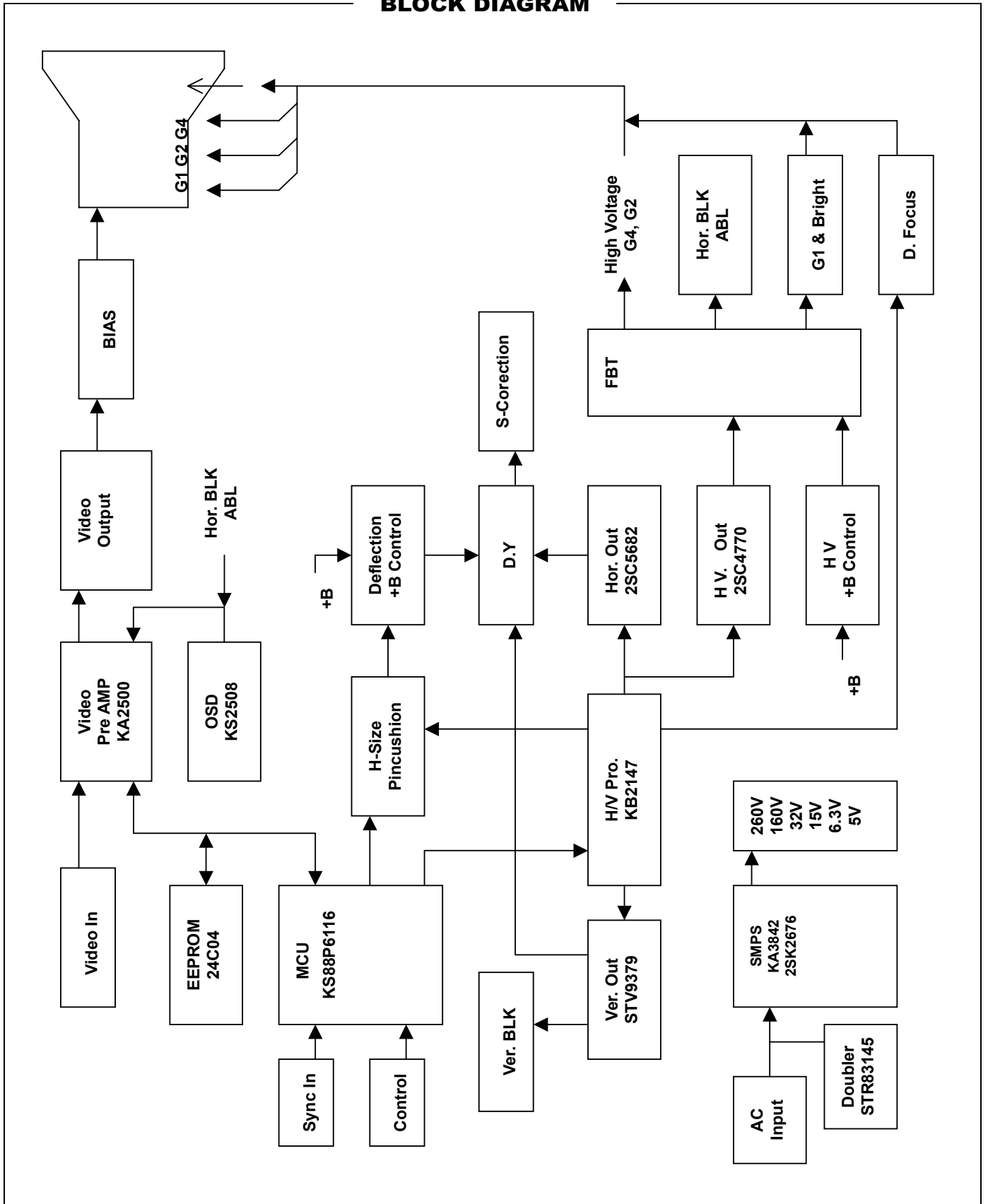
DO NOT ATTEMPT TO MODIFY THIS CIRCUIT.

A fly back pulse is generated at pin (3) of the fly back transformer.

After the pulse converted to DC through rectifying circuit D415 & C452, it is input to IC403 pin (16) through the divider network register R426 & R425. Normally cathode voltage of ZD401 is below 14V, it is not operated but in case of excess voltage it has to be shut-down.



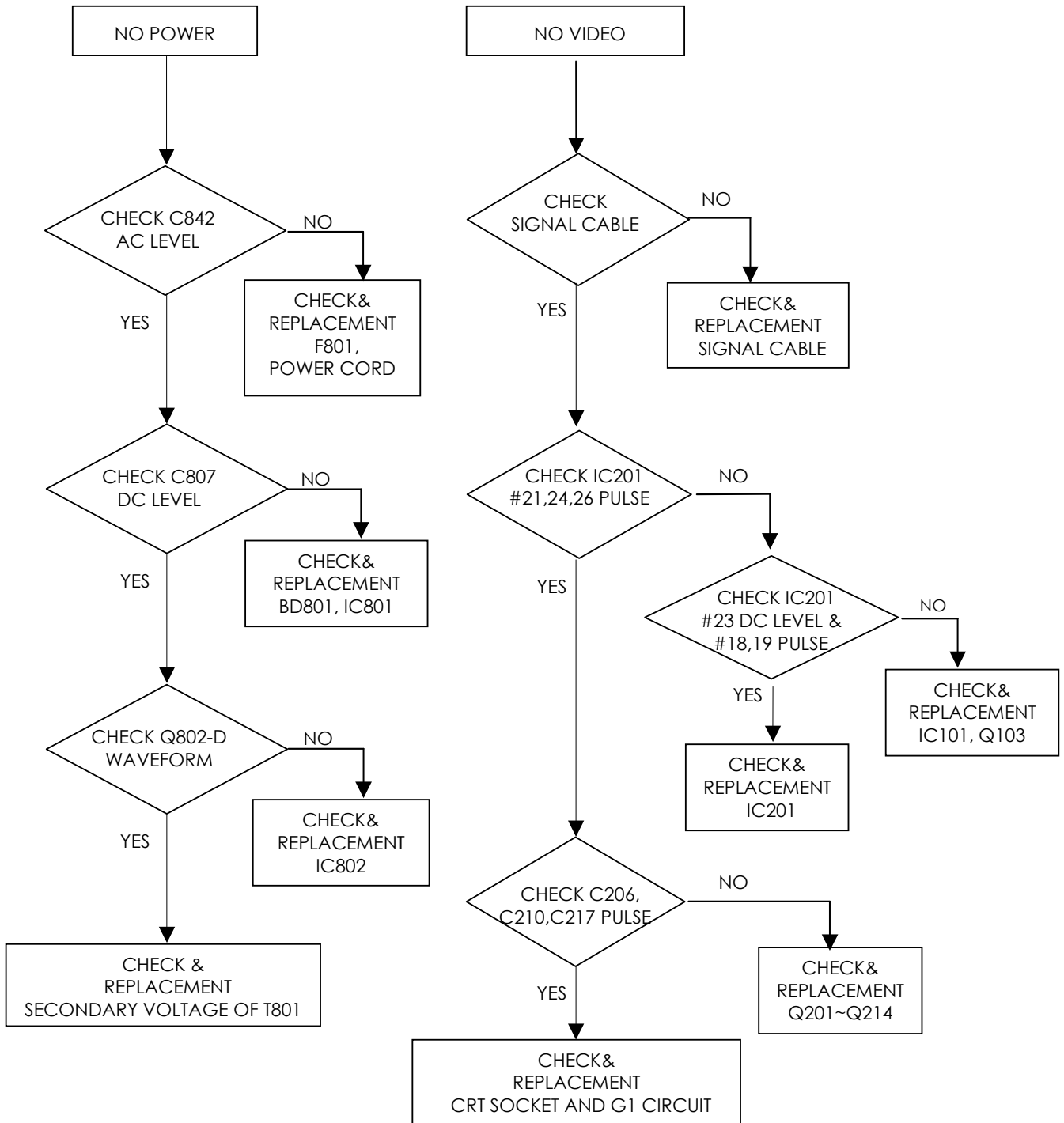
BLOCK DIAGRAM



TROUBLE SHOOTING CHART

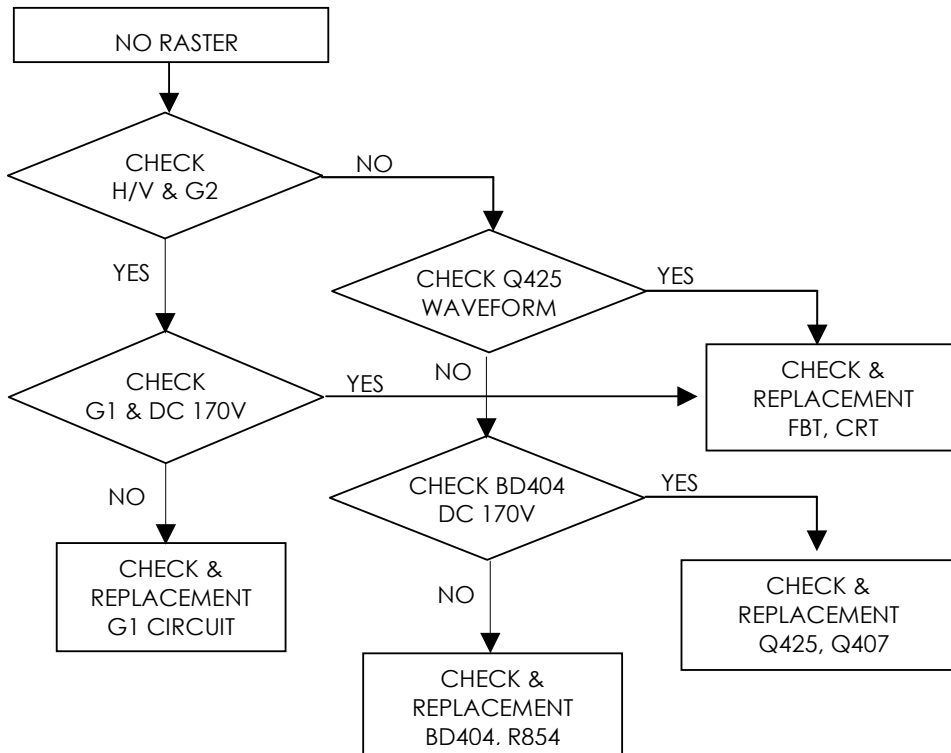
NO POWER

NO VIDEO

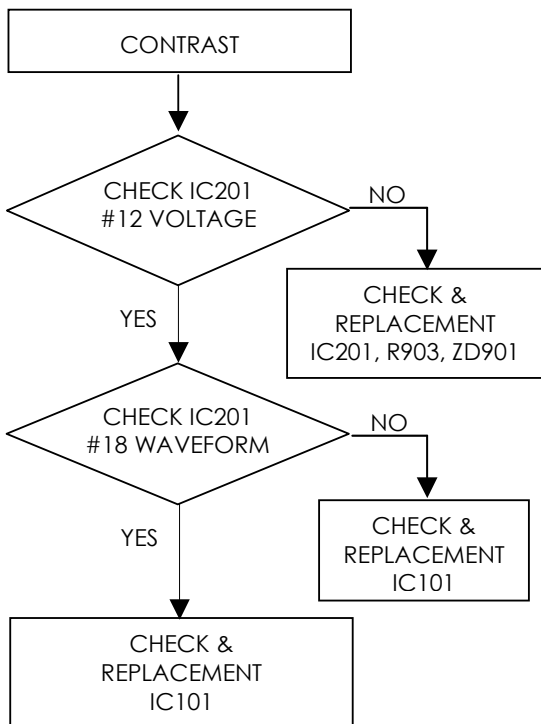


TROUBLE SHOOTING CHART

NO RASTER



CONTRAST



BRIGHTNESS

