

GENX-WD00-HR/VR

ILLUSTRATED PARTS CATALOG
VERSION 1.04
February 5, 2008

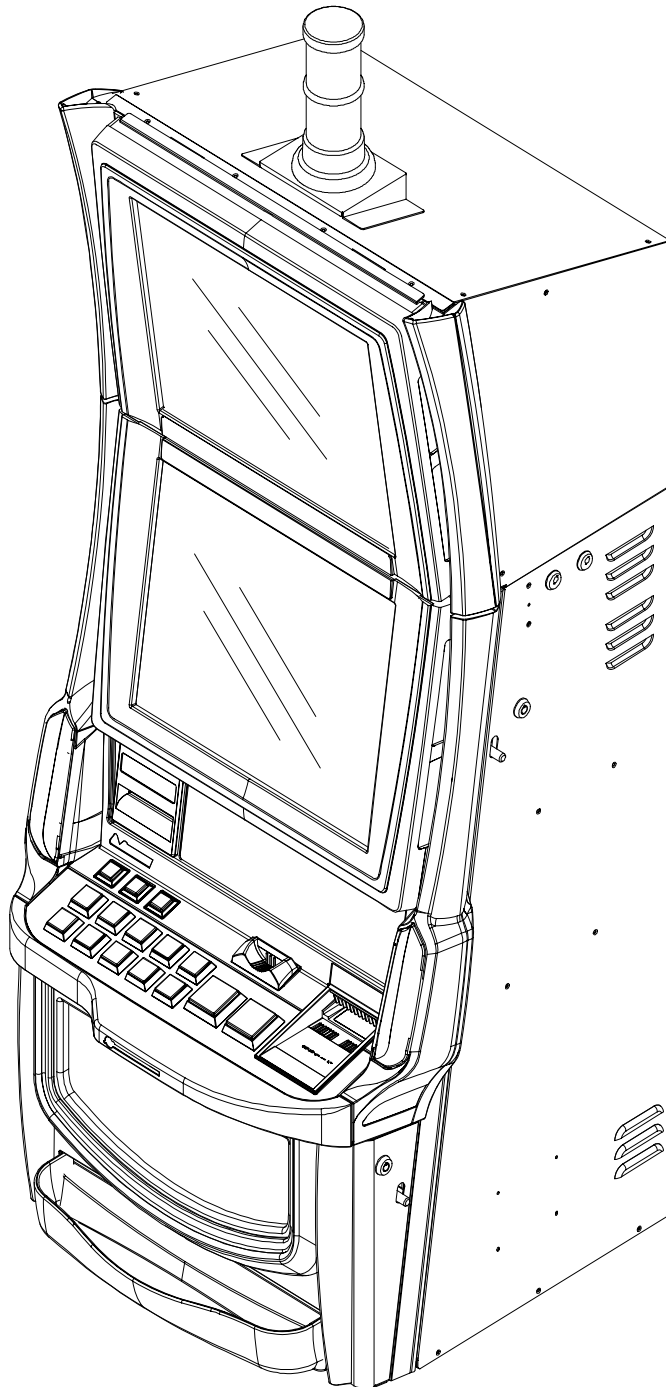
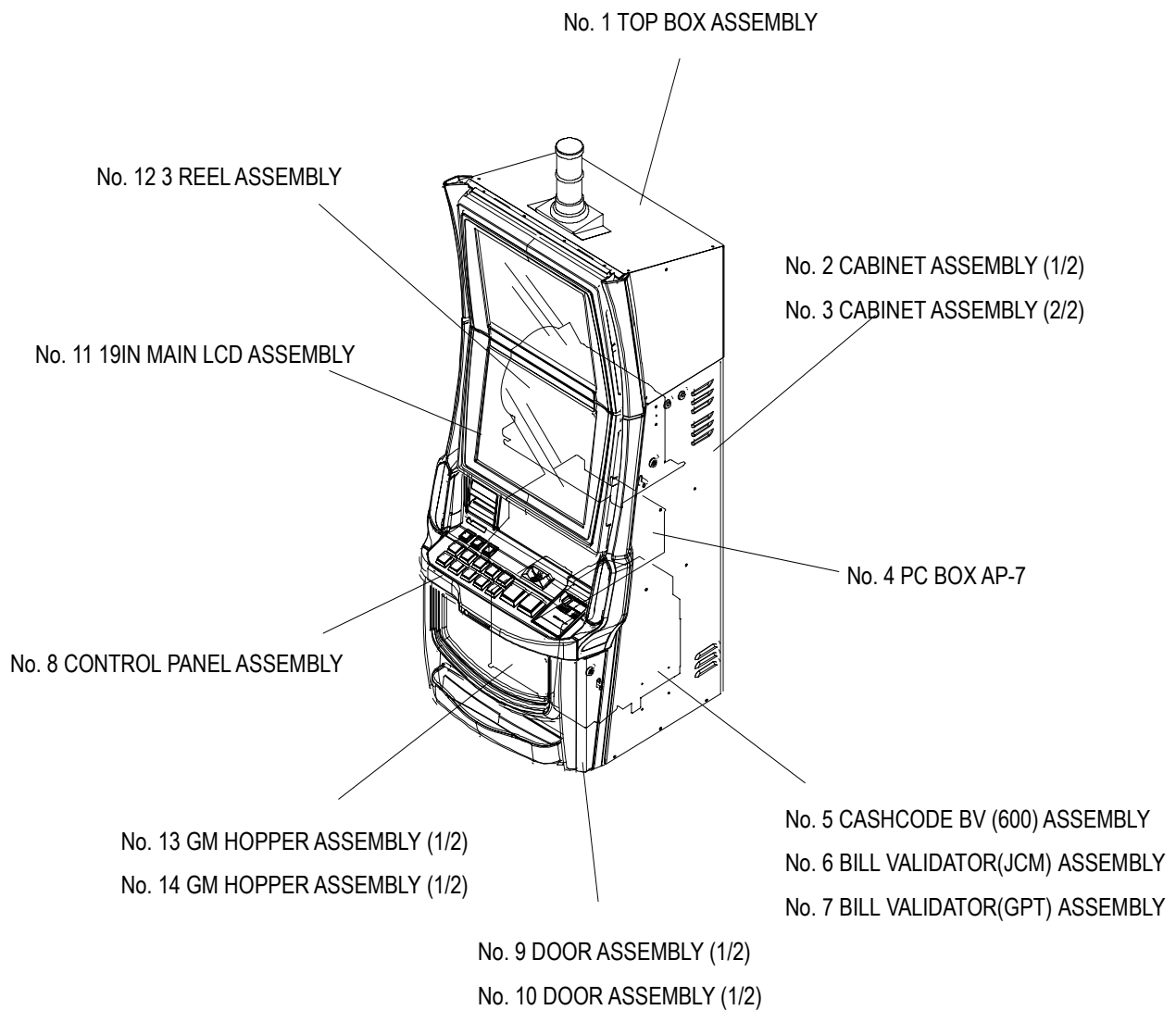


TABLE OF CONTENTS

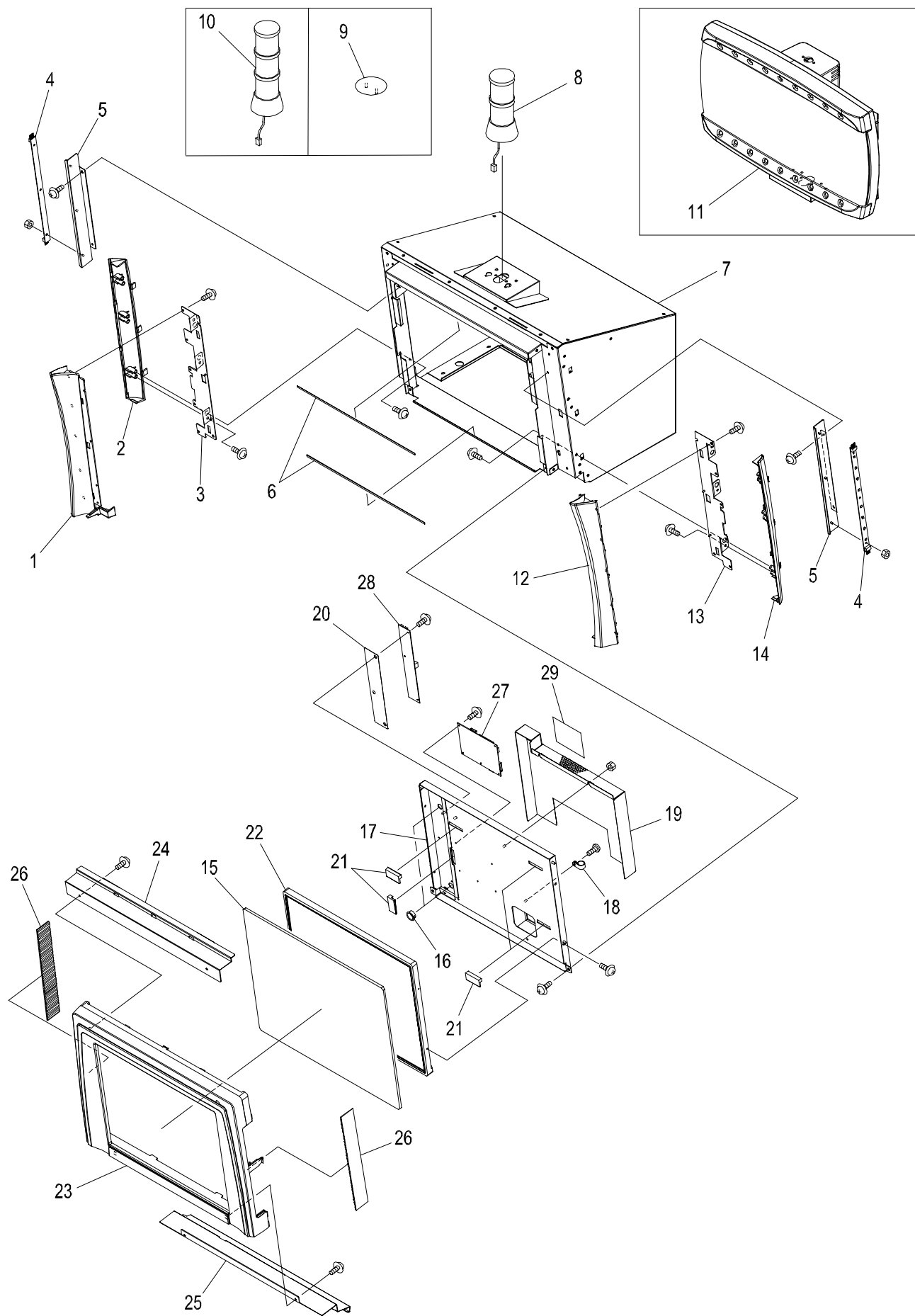
	PAGE
MAJOR COMPONENTS.....	3
No. 1-1 TOP BOX ASSEMBLY	4
No. 1-2 LOW TOP BOX ASSEMBLY	6
No. 2 CABINET ASSEMBLY (1/2)	8
No. 3 CABINET ASSEMBLY (2/2)	12
No. 4 PC BOX AP-7.....	14
No. 5 CASHCODE BV (600) ASSEMBLY	18
No. 6 BILL VALIDATOR (JCM) ASSEMBLY	20
No. 7 BILL VALIDATOR (GPT) ASSEMBLY	22
No. 8 CONTROL PANEL ASSEMBLY	24
No. 9 DOOR ASSEMBLY (1/2)	26
No. 10 DOOR ASSEMBLY (2/2)	30
No. 11 19IN MAIN LCD ASSEMBLY	34
No. 12 3 REEL ASSEMBLY	34
No. 13 GM HOPPER ASSEMBLY (1/2).....	38
No. 14 GM HOPPER ASSEMBLY (2/2).....	40

MAJOR COMPONENTS



No. 1-1

TOP BOX ASSEMBLY

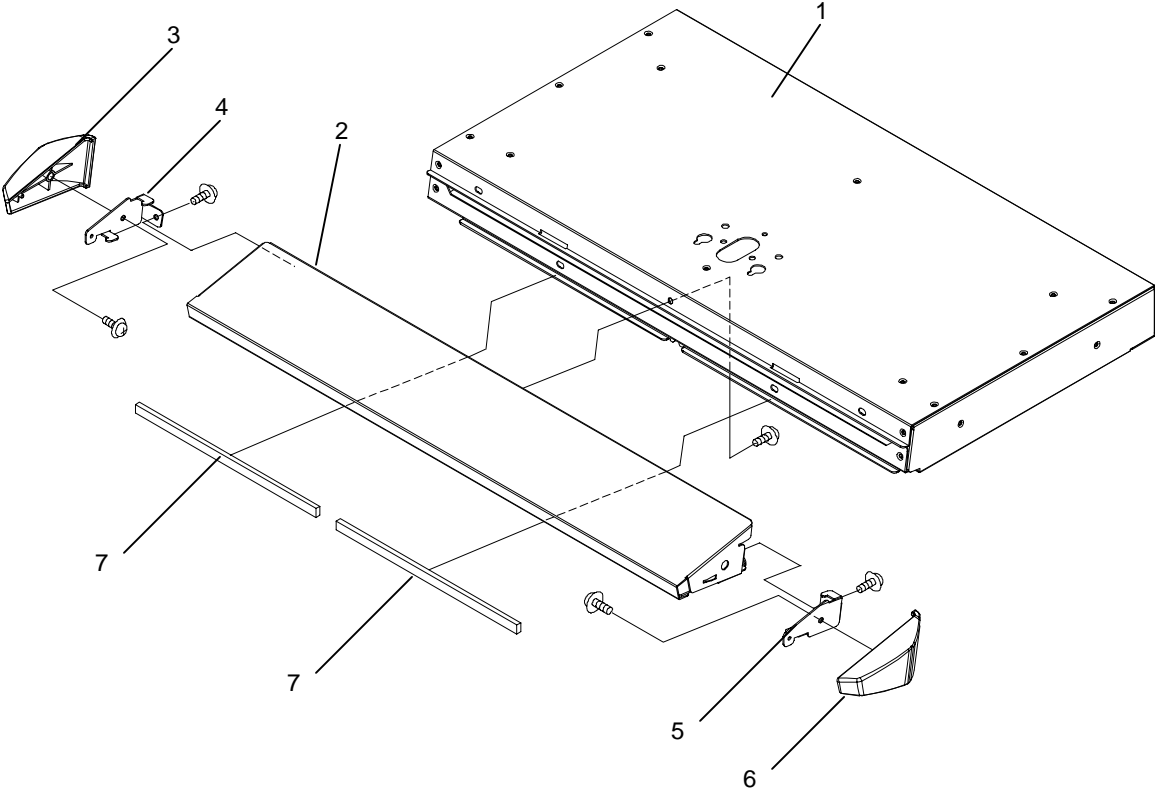


TOP BOX ASSEMBLY (PARTS LIST)

No. 1-1

ITEM	PART NO.	PARTS NAME	Q'TY	MATERIAL/TYPE	REMARKS
1	2EK010200	TOP BOX REF FRONT CASE L	1	ABS	
2	2EK010300	TOP BOX REF REAR CASE L	1	ABS	
3	0EK010400	TOP BOX REF FRAME L	1	SECC t=1.2	
4	CEK000400	BD-GM-M2LED4	2	P509008-0101TI	
5	0EK009200	TOP BOX SIDE LED BRKT	2	SECC t=1.2	
6	2EK009400	TOP MONITOR GLASS SPONGE	2	CR	
7	CEK007100	ASSY SUB TOP BOX(GX)	1		
8		TOWER LIGHT	1	TWL2-12V	By customer's demand.
9	0C0022800	TOP TOWER HOLE BLIND PLATE	1	SECC-C t=1.0	
10		TOWER LIGHT	1	TWL3-12V	By customer's demand.
11		G-TOPPER	1	GTPR-PP	By customer's demand
12	2EK010500	TOP BOX REF FRONT CASE R	1	ABS	
13	0EK010700	TOP BOX REF FRAME R	1	SECC	
14	2EK010600	TOP BOX REF REAR CASE R	1	ABS	
15	2EK009300	TOP MONITOR GLASS	1	t=5.0	
16	810816600	ONE TOUCH BUSH	2	NB-8	
17	0EK025600	TOP LCD CASE ASM	1		
18	810346200	NOISE GROUNDING CLAMP	1	EMT-6N	
19	0EK025700	TOP LCD REAR COVER ASM	1		
20	2EK025800	INSURATION SHEET	1	PC t=0.5	
21	2D4106400	LCD RUBBER	4	EPM	
22	603125900	19IN LCD LM190E03-TLB1	1	LM190E03-TLB1	
23	2EK010800	MONITOR MASK ASM	1	CHROMIUM	Varies according to spec.
23	2EK042000	MONITOR MASK AUS ASM	1	BLACK	Varies according to spec.
24	0EK011000	MONITOR MASK UPPER BKT(GX)	1	SECC	
25	0EK011100	MONITOR MASK LOWER BKT	1	SECC	
26	2EK010900	MONITOR MASK LED LENS	2		
27	609926100	DVI/RGB to LVDS PCB	1	SC-3B	
28	602426000	LCD BACKLIGHT INVERTER	1	IM6501	
29	2EK006800	ST W HIGH VOLTAGE UL	1	PET t=0.75	

No. 1-2 LOW TOP BOX ASSEMBLY



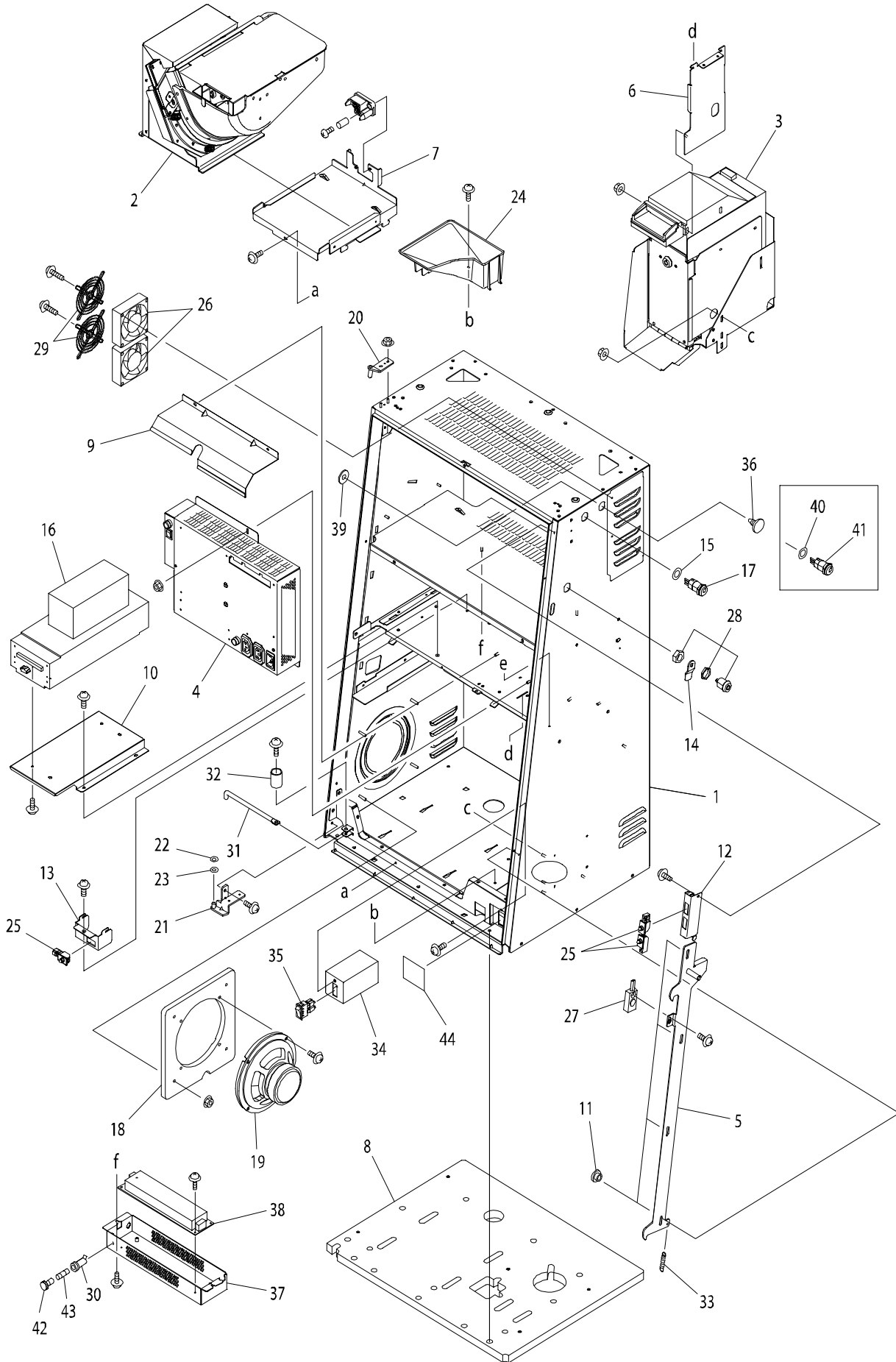
LOW TOP BOX ASSEMBLY (PARTS LIST)

No. 1-2

ITEM	PART NO.	PARTS NAME	Q'TY	MATERIAL/TYPE	REMARKS
1	GNX-6501-00	LOW TOP FRONT ASM(GX)	1		
2	GNX-6502-00	LOW TOP BOX BASE ASM	1		
3	GNX-6505	LOW TOP SIDE MALL L	1	ABS	
4	GNX-6503	LOW TOP SIDE MALL BRKT L	1	SECC t=1.2	
5	GNX-6504	LOW TOP SIDE MALL BRKT R	1	SECC t=1.2	
6	GNX-6506	LOW TOP SIDE MALL R	1	ABS	
7	GNX-6507	SPONGE FOR LOW TOP BOX	2		

No. 2

CABINET ASSEMBLY (1/2)



CABINET ASSEMBLY 1/2 (PARTS LIST)

No. 2

ITEM	PART NO.	PARTS NAME	Q'TY	MATERIAL/TYPE	REMARKS
1	CEK007700	ASSY SUB CABINET(GX)	1		
2	No.13, No.14	GM HOPPER ASSEMBLY	1		
3	No.5~7	BILL VALIDATOR ASSEMBLY	1		
4	CEL000500	SWITCHING POWER SUPPLY	1	A2PSAPSU1G04 (100V)	Varies according to spec.
4	609911500	SWITCHING POWER SUPPLY	1	A2PSAPSU2G04 (200V)	Varies according to spec.
4	609901900	SWITCHING POWER SUPPLY	1	A2PSAPSU1G07 (100V)	Varies according to spec.
4	CEK050600	SWITCHING POWER SUPPLY	1	A2PSAPSU2G07 (200V)	Varies according to spec.
5	0EK000700	ASSY CABINET KEY PLATE	1		
6	0EK000900	BV SPACER TABLE BRKT	1	SECC t=1.6	
7	0EK000800	HOPPER BASE ASM	1		
8	1EK001500	CABINET BOTTOM WOOD 01	1	t=18	
9	0EK001000	HEAT INSULATOR	1	SECC t=1.2	
10	0EK030500	PRINTER BASE BRKT	1	SECC t=1.2	
11	0D4014200	LOCK SLIDER COLLAR	4	C3601BD ϕ =10	
12	0D4008400	MAIN DOOR SW BKT	1	SECC-C t=1.2	
13	0D4006600	PCB BOX SW BKT	1	SECC-C t=1.2	
14	0D4007000	MAIN DOOR KEY PLATE	1	SECC-C t=2.3	
15	2D40EAR00	KEY SW LABEL	2	PC t=0.5	
16		TICKET PRINTER	1		Varies according to spec.
17	601356400	RESET/METER KEY SW	1	KG3C-20D ASSY	
18	2EK014500	WOOFER BOARD	1	MDF t=12	
19	601114600	WOOFER SPEAKER	1	FL160U132-1	
20	0EK000000	ML2 CB UPPER HINGE PLATE ASM	1		
21	0EK000100	ML2 CB LOWER HINGE PLATE ASM	1		
22	2EK000300	POLY WASHER	1	CC-0816-10	
23	2EK000400	POLY SLIDER	1	LL-8212-05	
24	2EK001400	OVER FLOW CHUTE	1	ABS	
25	600138000	DOOR SWITCH	3	SDKNA20600	
26	609902300	CABINET DC FAN	2	109R0812S401	
27	600202200	INPUT PHOTO SENSOR	1	KB875-AZ02LF	
28	601302100	KEY B2155 ROHS	1	F750-MSDS-L90 B2155 RoHS	
29	600894700	FINGER GUARD	2	109-049E	
30	601515000	FUSE HOLDER	1	3453LF2-010	
31	2EK000200	DOOR STOPPER	1	SGD ϕ 8	
32	0EK000500	SPACER M5X13(ROHS)	1	3382330-50130	

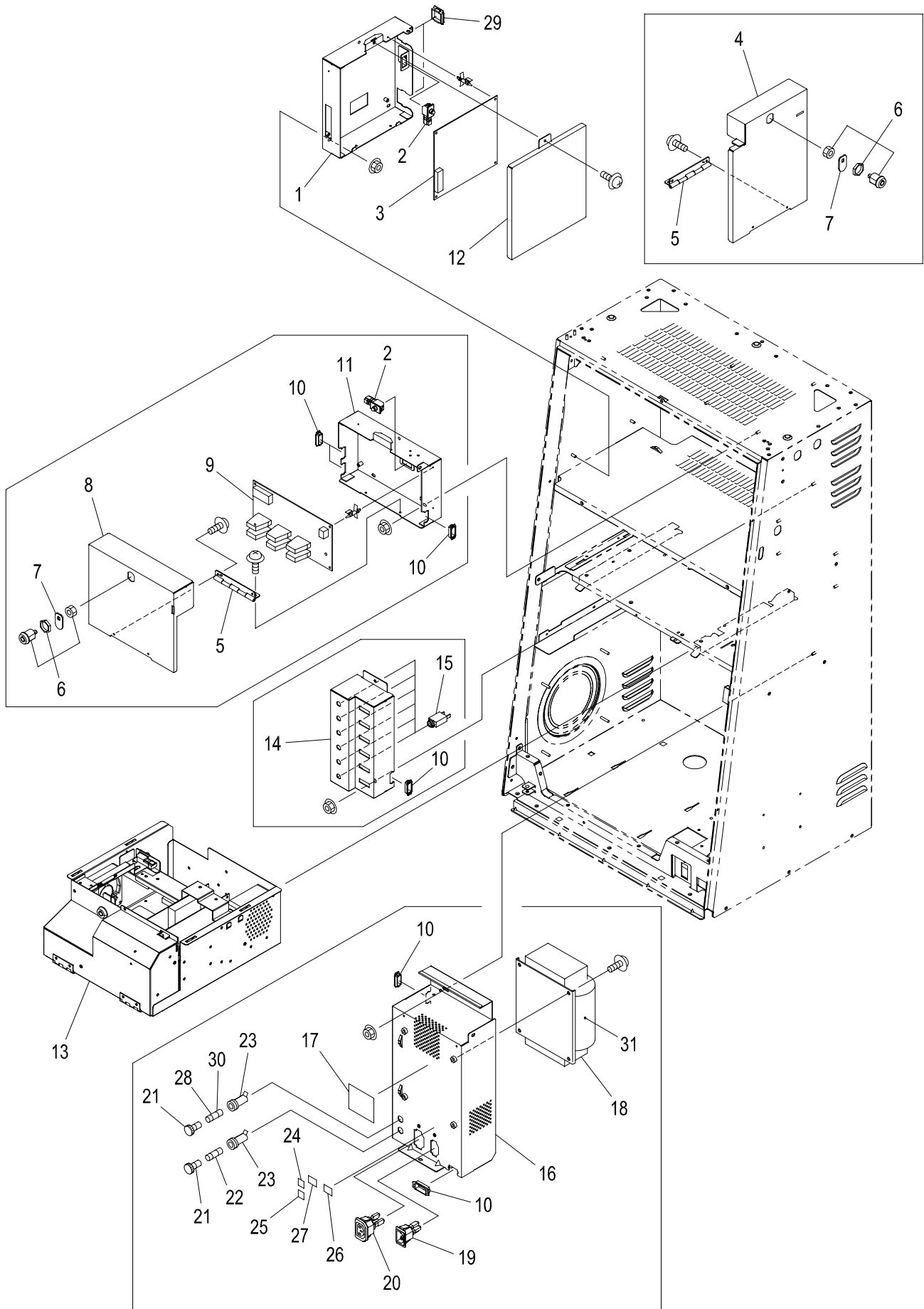
No. 2 CABINET ASSEMBLY (1/2) (PARTS LIST)

ITEM	PART NO.	PARTS NAME	Q'TY	MATERIAL/TYPE	REMARKS
33	0EK002600	EXTENSION SPRING	1	E-605	
34	0EK001100	MAIN POWER SW BOX	1	SECC t=1.2	
35	600302400	ROCKER SW	1	AJ8202BF	
36	0EK001300	KEY SW HOLE BLIND PLATE ASM (B)	1		Varies according to spec
37	0EK016000	SUB POWER BOX BASE	1	SECC t=1.2	
38	609916100	SWITCHING POWER SUPPLY	1	ZWS75AF-24/J	
39	0D4114200	BLIND PLATE WASHER	1		Varies according to spec
40	2D40EAN00	POWER SAVE SW LABEL	(1)		Varies according to spec.
41	601367000	POWER SAVE KEY SW	(1)	KH2C-10A ASSY	Varies according to spec
42	601515400	FUSE HOLDER KNOB	2	3455LF1-020	
43	601540200	MINI FUSE 3.15A	1	215 3.15.p	
44	2EK001800	MAIN SW WATERPROOF SHEET	1		

SERVICE MEMO

No. 3

CABINET ASSEMBLY (2/2)



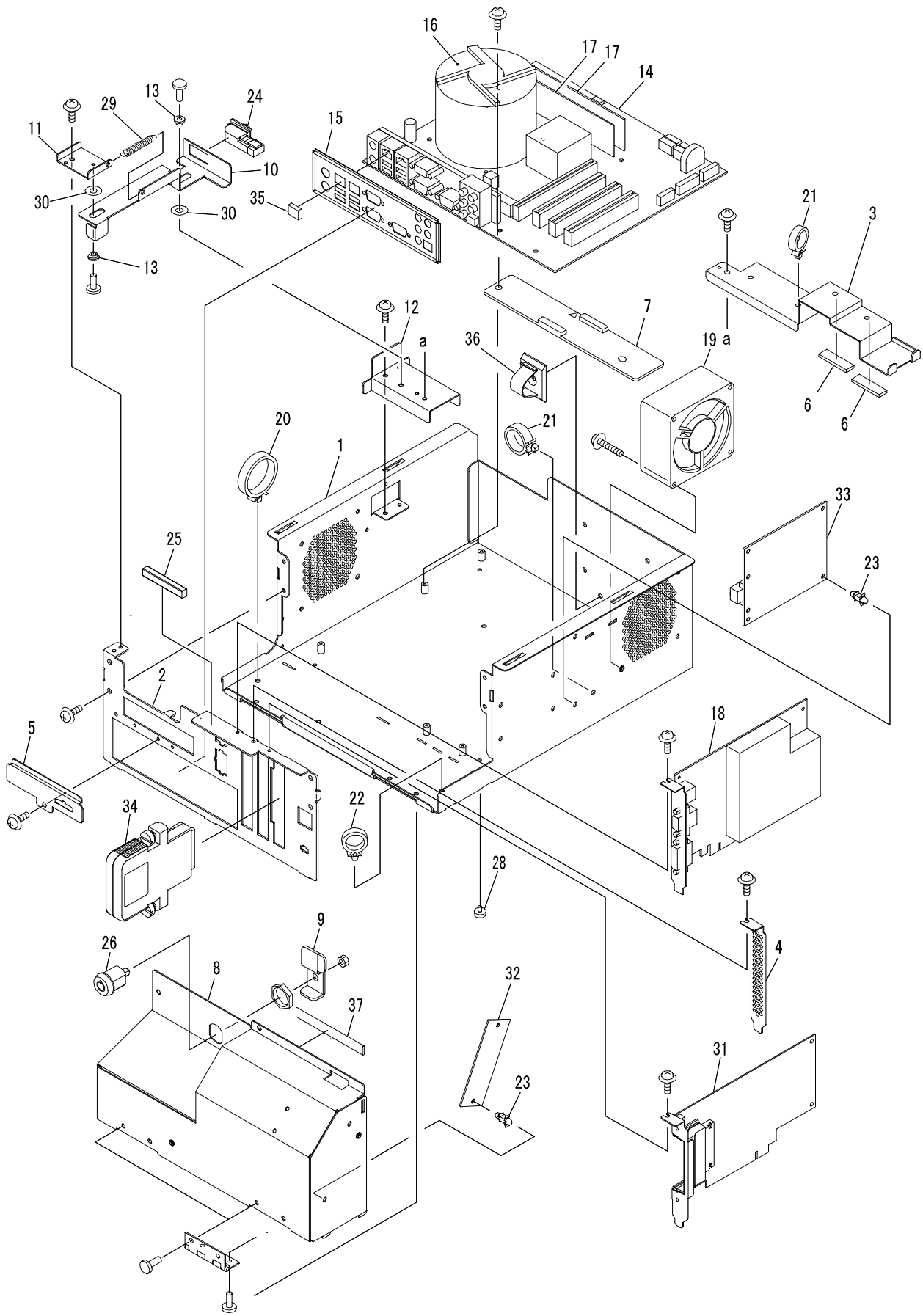
CABINET ASSEMBLY (2/2) (PARTS LIST)

No. 3

ITEM	PART NO.	PARTS NAME	Q'TY	MATERIAL/TYPE	REMARKS
1	0EK011800	BODY IO CASE	1	SECC	
2	600138000	DOOR SWITCH	1(2)	SDKNA20600	Varies according to spec.
3	CEK000200	BD-GM-M2IO	1	P509002-0101TI	
4	0EK011900	BODY IO COVER(AUS)	1	SECC	Varies according to spec.
5	0C0010000	PCB DOOR HINGE	2		Varies according to spec.
6	601312002	KEY B1963 ROHS	2	F750-MSDS-L90 B1963 RoHS	Varies according to spec.
7	0EK007300	BELLY DOOR LOCK PLATE	2		Varies according to spec.
8	0EK012300	AUSCOM COVER	1		Varies according to spec.
9	CD4018A00	AUSCOM-A PCB	1	FR-4/UA2054-11A	Varies according to spec.
10	810338100	EDGING SADDLE	6	TSB-1909L	Varies according to spec.
11	0EK012200	AUSCOM CASE	1		Varies according to spec.
12	0EK014400	BODY IO COVER	1		
13	No.4	PC BOX AP-7	1		
14	0EK012600	POWER PORT BRKT	1		Varies according to spec.
15	600614300	CIRCUIT BREAKER	6	106-P10-0.5A	Varies according to spec.
16	0EK014800	TRANS BOX ASM	1		Varies according to spec.
17	2EK006800	ST W HIGH VOLTAGE UL	1	PET t=0.75	Varies according to spec.
18	600714900	TRANSFORMER (115V 1000VA)	(1)	600746200	Varies according to spec.
19	601403400	INLET	1	AC-P03CS05	Varies according to spec.
20	601403200	OUTLET	1	AC-F01FB01	Varies according to spec.
21	601515400	FUSE HOLDER KNOB	2	3455LF1-020	Varies according to spec.
22	601515001	MINI FUSE 1A	1	215 001.P	Varies according to spec.
23	601515000	FUSE HOLDER	2	3453LF2-010	Varies according to spec.
24	2EK015500	MINI FUSE (10A250V) LABEL UL	1		Varies according to spec.
25	2EK015600	UNSW FUSE (1A250V) LABEL UL	1		Varies according to spec.
26		INLET LABEL	1		Varies according to spec.
27		OUTLET LABEL	1		Varies according to spec.
28	601515100	MINI FUSE 12A	(1)	215 012.P	Varies according to spec.
29	810338200	EDGING SADDLE	2	TSB-3027	
30	601550400	MINI FUSE 10A	(1)	215 010.P	Varies according to spec.
31	600750300	TRANSFORMER (220V 1000VA)	(1)	600746300	Varies according to spec.

No. 4

PC BOX AP-7



PC BOX AP-7 (PARTS LIST)

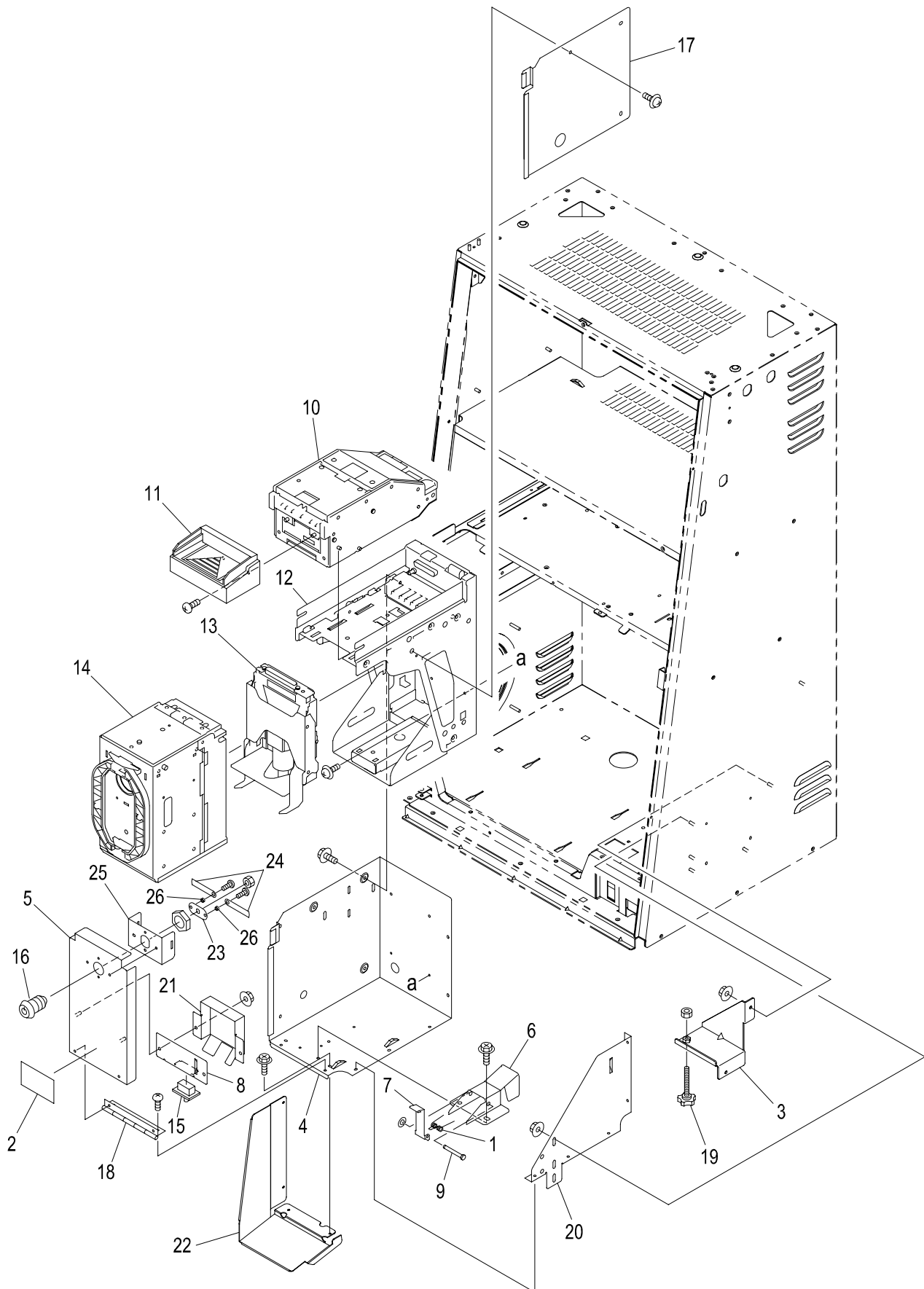
No. 4

ITEM	PART NO.	PARTS NAME	Q'TY	MATERIAL/TYPE	REMARKS
1	0EK036400	AP7 PC BASE	1		
2	0EK040000	AP7 PC FRONT PANEL B	1		
3	0EK037000	AP7 PC FIX BRKT	1		
4	0EK036900	AP7 PC SLOT COVER	1		
5	0EK036800	AP7 CONNECTOR COVER G	1		
6	2EK037100A	AP7 PC SPONGE	2		
7	2D4011000	MOTHER INSULATION SPACER	1		
8	0EK036500	AP7 PC FRONT COVER	1		
9	0EK036600	AP7 PC KEY PLATE	1		
10	0EK039000	AP7 PC SW BRKT	1		
11	0EK039100	AP7 PC SW GUIDE FRONT	1		
12	0EK039200	AP7 PC SW GUIDE REAR	1		
13	2EK039300	POLY BUSH	2		
14	603537200	MOTHER BOARD AP-7	1	AP-7	
15	-	I/O PANEL AP-7	1	AP-7	
16	609937300	CPU	1		
17	603537500	MEMORY DDR2	2		
18	603537400	GRAPHIC BOARD	1		
19	609937701	DC FAN 9G0812H105	1	9G0812H105	
20	810338201	LOCKING ADJUST CLAMP LCT-4SI	1	LCT-4SI	
21	810338101	LOCKING ADJUST CLAMP LCT-2.5S	2	LCT-2.5S	
22	810313900	LOCKING ADJUST CLAMP LCT-2S	1	LCT-2S	
23	810292300	LOCKING PCB SPACER LCBT-3S	6	LCBT-3S	
24	600138000	DOOR SWITCH SDKNA20600	1	SDKNA20600	
25	810340101	SHIELD TIGHT STG 13-10 L=80	1	STG 13-10 L=80mm	
26	601312002	KEY B1963 ROHS	1	F750-MSDS-L90 B1963 RoHS	
27	0EK037900	HINGE LSB-50	2	LSB-50	
28	810338001	ONE TOUCH LEG MINI TYPE FF-013	4	FF-013	
29	0EK039500	EXTENSION SPRING E-577	1	E-577	
30	810339400	POLY WASHER CC-0411-10	2	CC-0411-10	
31		ASSY AP-7 GMEM2	1	PC2-2000	Varies according to spec.
31		ASSY AP-7 GMEM2-01	1	PC2-2000-A01	Varies according to spec.
32	CEK002800	BD-STH	1		Varies according to spec.
33	CEK002700	BD-GM-FDAMP	1		
34		ASSY GMEM CASSETTE	1	PC2-5000	By the game

SERVICE MEMO

No. 5

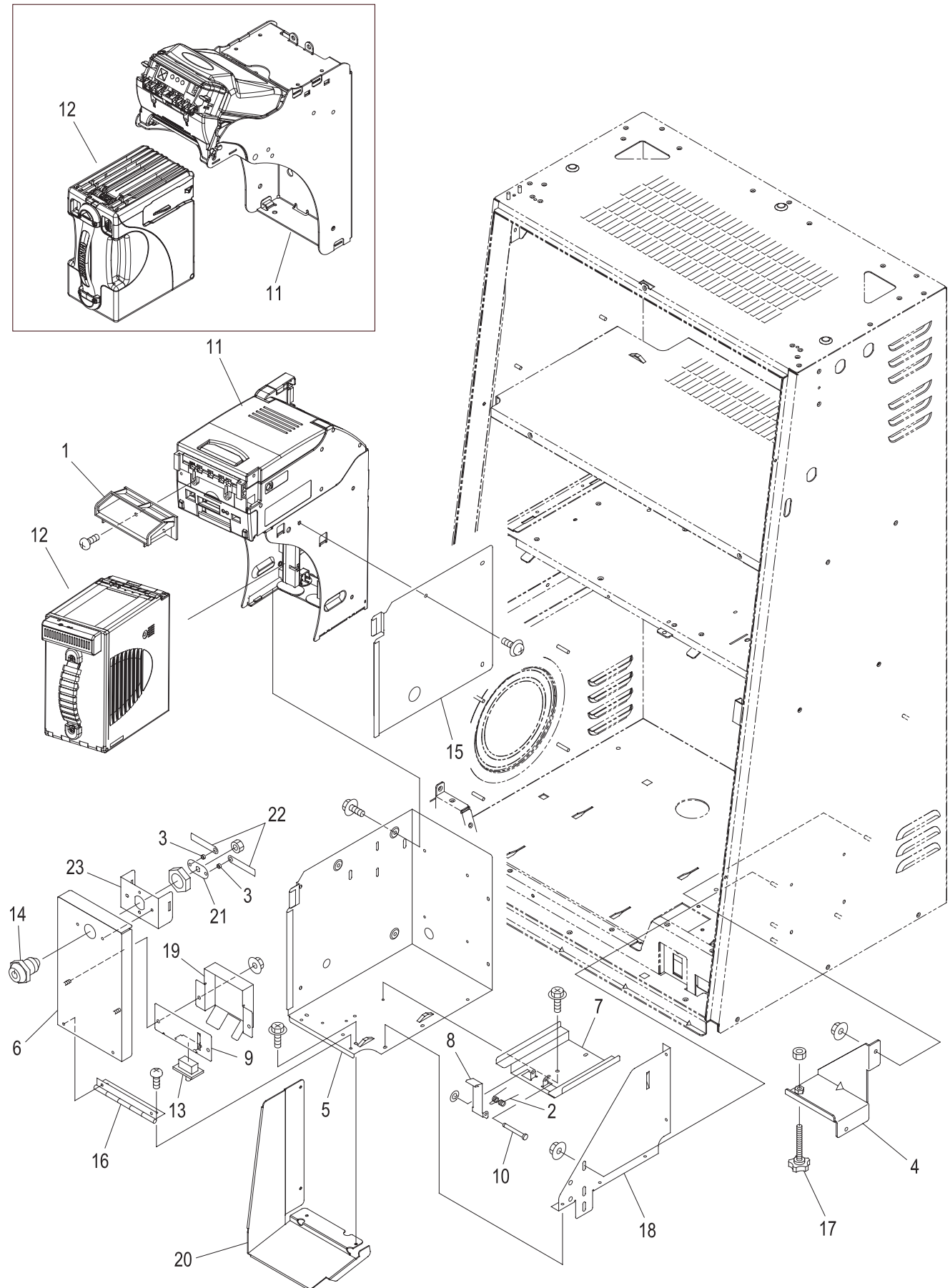
CASHCODE BV (600) ASSEMBLY



CASHCODE BV (600) ASSEMBLY (PARTS LIST) No. 5

ITEM	PART NO.	PARTS NAME	Q'TY	MATERIAL/TYPE	REMARKS
1	0D4008600	BV ACTUATOR SPRING (JCM)	1	SWP ϕ 0.5	
2	2EK006700	ST W AVOID INJURY UL	1	PET t=0.75	
3	0EK001200	BV ADJUST BKT W	1	SECC-C 2.0t	
4	0D4009200	BV CASE (JCM)	1	SECC-C 1.2t	
5	0D4021600	BV STACKER DOOR (Cash Code)	1	SECC-C 1.2t	
6	0D4021400	BV STACKER RAIL (Cash Code)	1	SECC-C 1.2t	
7	0D4009800	BV ACTUATOR (JCM)	1	SECC-C 1.2t	
8	0D4010000	BV SW BKT (JCM)	1	SECC-C 1.2t	
9	0D4010200	BV ACTUATOR PIN (JCM)	1	SUS 304 ϕ 3	
10		VALIDATING HEAD	1	MFLV-2110	By currency type.
11		BEZEL	1	MFLB-2401	By currency type.
12		HOUSING	1	FLH-0110	By currency type.
13		POWER INTERFACE	1	FLP-1710	By currency type.
14		CASSETTE	1	FLC-103	By currency type.
15	600121000	SAFETY DOOR SW	1	E77-40A-001	.
16	601302100	KEY B2155 ROHS	1	F750-MSDS-L90 B2155 RoHS	
17	0D4020600	BV SIDE PANEL	1	SECC-C 1.2t	
18	0C0010000	PCB DOOR HINGE	1	D-HH100	
19	2D4007800	SUPER KNOB	1	SK-34	
20	0D4016000	BV CASE BKT	1	SECC-C 1.2t	
21	0D4016200	BV SW COVER (JCM)	1	SECC-C 1.2t	
22	0EK029000	BV SIDE BLIND PLATE	1	SECC-C 1.2t	
23	0D4020800	STACKER DOOR LINK PLATE	1	SECC-C 2.3t	
24	0D4021000	STACKER DOOR LOCK PLATE	2	SECC-C 2.3t	
25	0D4021200	STACKER DOOR LOCK HOLDER	1	SECC-C 1.2t	
26	0EK029100	SPACER M4X3(ROHS)	2	3382309-40030	

No. 6 BILL VALIDATOR (JCM/Mei) ASSEMBLY

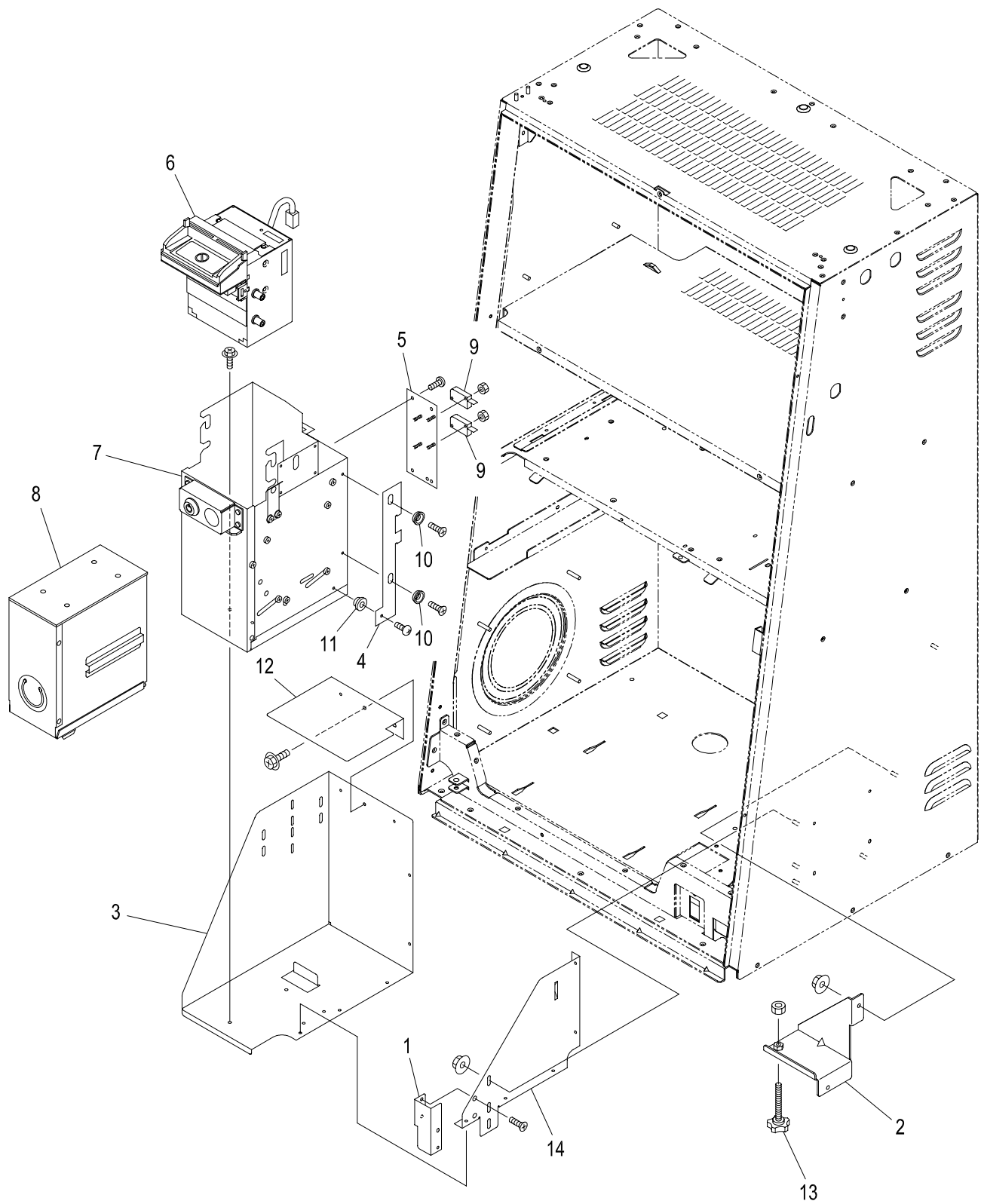


BILL VALIDATOR (JCM) ASSEMBLY (PARTS LIST)No. 6

ITEM	PART NO.	PARTS NAME	Q'TY	MATERIAL/TYPE	REMARKS
1	2D4005200	BILL BEZEL (JCM)	1	ABS	
2	0D4008600	BV ACTUATOR SPRING (JCM)	1	SWP ϕ 0.5	
3	0EK029100	SPACER M4X3(ROHS)	2	3382309-40030	
4	0EK001200	BV ADJUST BKT W	1	SECC-C 2.0t	
5	0D4009200	BV CASE (JCM)	1	SECC-C 1.2t	
6	0D4020400	BV STACKER DOOR (JCM/HS)	1	SECC-C 1.2t	
7	0D4009600	BV STACKER RAIL (JCM)	1	SECC-C 1.2t	
8	0D4009800	BV ACTUATOR (JCM)	1	SECC-C 1.2t	
9	0D4010000	BV SW BKT (JCM)	1	SECC-C 1.2t	
10	0D4010200	BV ACTUATOR PIN (JCM)	1	SUS 304 ϕ 3	
11		BILL VALIDATOR	1		By currency type.
12		STACKER	1		By currency type.
13	600121000	SAFETY DOOR SW	1	E77-40A-001	
14	601302100	KEY B2155 ROHS	1	F750-MSDS-L90 B2155 RoHS	
15	0D4020600	BV SIDE PANEL	1	SECC-C 1.2t	
16	0C0010000	PCB DOOR HINGE	1	D-HH100	
17	2D4007800	SUPER KNOB	1	SK-34	
18	0D4016000	BV CASE BKT	1	SECC-C 1.2t	
19	0D4016200	BV SW COVER (JCM)	1	SECC-C 1.2t	
20	0EK029000	BV SIDE BLIND PLATE	1	SECC-C 1.2t	
21	0D4020800	STACKER DOOR LINK PLATE	1	SECC-C 2.3t	
22	0D4021000	STACKER DOOR LOCK PLATE	2	SECC-C 2.3t	
23	0D4021200	STACKER DOOR LOCK HOLDER	1	SECC-C 1.2t	

No. 7

BILL VALIDATOR (GPT) ASSEMBLY

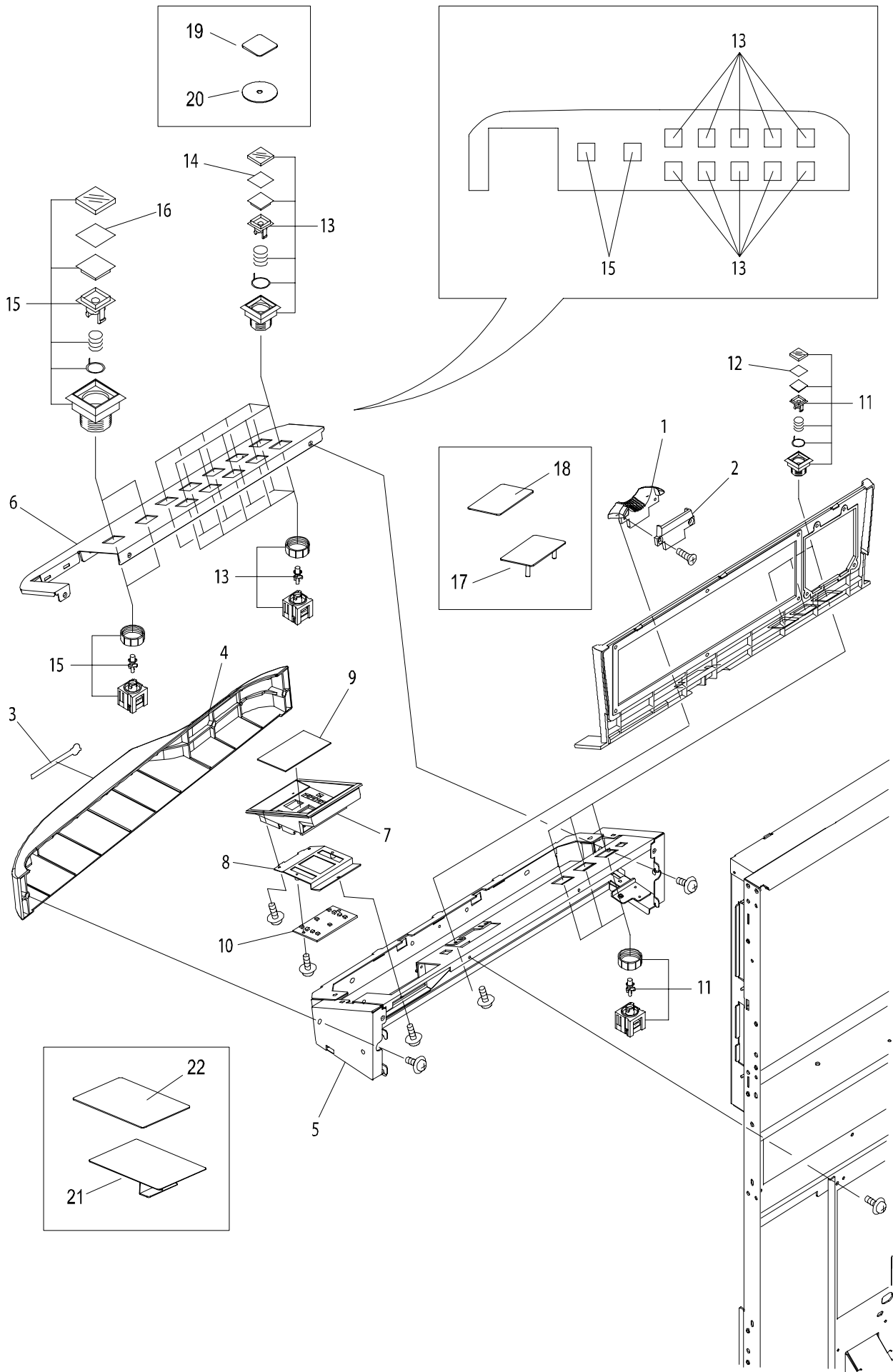


BILL VALIDATOR (GPT) ASSEMBLY (PARTS LIST)No. 7

ITEM	PART NO.	PARTS NAME	Q'TY	MATERIAL/TYPE	REMARKS
1	0D4010800	BV SUPPORT BKT (GPT)	1	SECC-C 1.2t	
2	0EK001200	BV ADJUST BKT W	1	SECC-C 2.0t	
3	0D4010400	BV CASE (GPT)	1	SECC-C 1.2t	
4	0C0016000	ARGUS SW BKT(B.B)	1	SECC-C 1.6t	
5	0C0016200	ARGUS SW BASE	1	SECC-C 1.6t	
6		BILL VALIDATOR HEAD ARGUS-D	1		By currency type.
7		ENCLOSURE	1		By currency type.
8		STACKER	1		By currency type.
9	600132100	MICRO SW	2	AM50632C3	
10	0C0017000	ARGUS SW BKT COLLAR	2	SS400 ϕ 10	
11	0C0017200	ARGUS SW BKT SPACER	1	SS400 ϕ 10	
12	0D4010600	BV REAR COVER (GPT)	1	SECC-C 1.2t	
13	2D4007800	SUPER KNOB	1	SK-34	
14	0D4016000	BV CASE BKT	1	SECC-C 1.2t	

No. 8

CONTROL PANEL ASSEMBLY

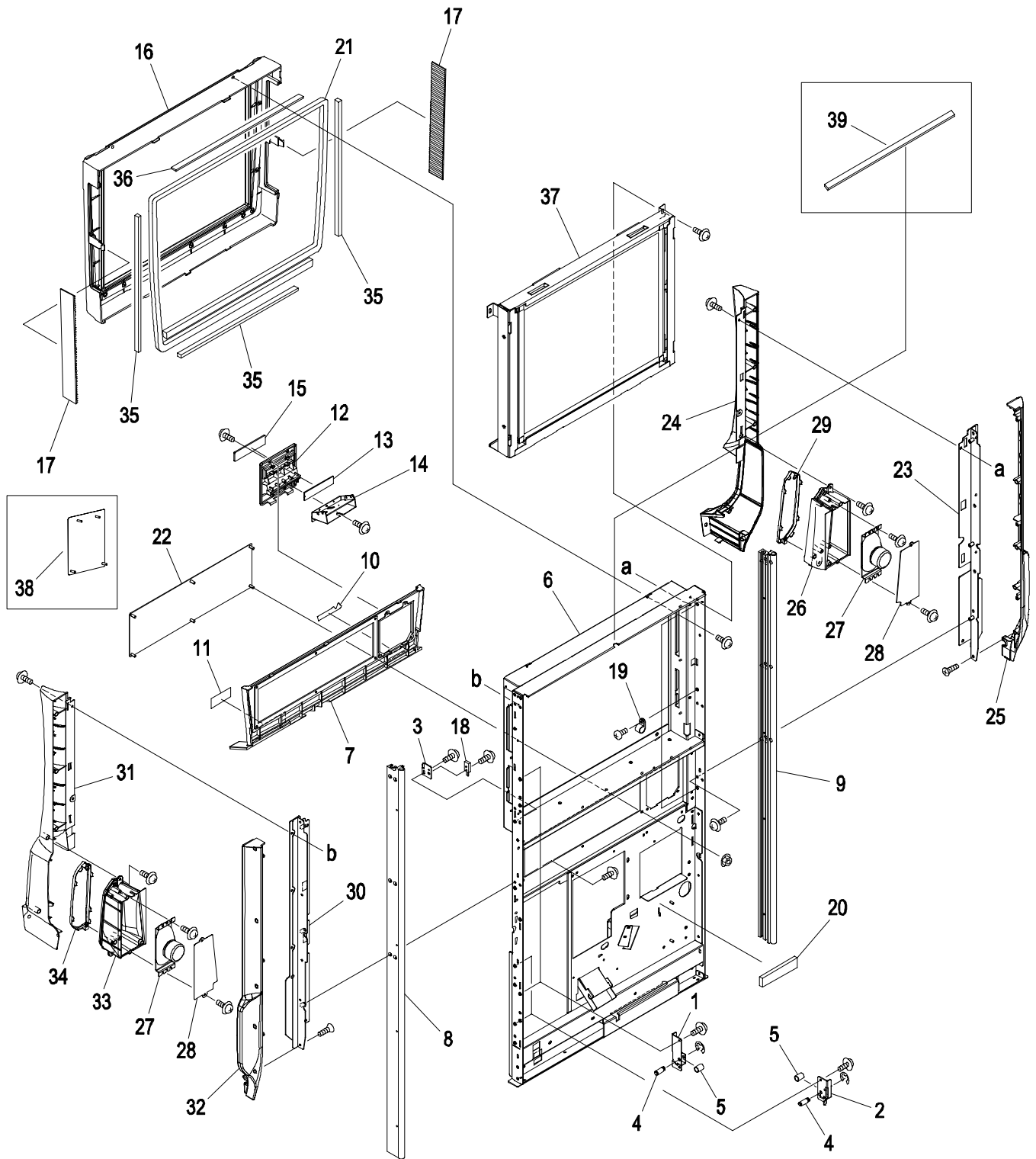


CONTROL PANEL ASSEMBLY (PARTS LIST) No. 8

ITEM	PART NO.	PARTS NAME	Q'TY	MATERIAL/TYPE	REMARKS
1	0D4113400	COIN ENTRY	1		
2		COIN ENTRY B	1		By token size.
3	2EK006200	PLATE G-ENEX	1	Al t=1.0	
4	2EK005200	CONTROL PANEL MALL (GX)	1	ABS	
5	0EK005100	CONTROL PANEL BASE ASM(GX)	1		
6	CEK002500	GX CONTROL PANEL ASM(15P)	1		
7	2EK021000	BV FACE	1	ABS	
8	0EK021100	BV FACE EARTH	1	SECC t=1.0	
9	2EK021200	ST BILL SIGN	1	PC t=0.5	
10	CEK000800	BD-GM-M2BV	1	P509009-0101TI	
11		PUSH BUTTON	3	SS-18UKK-x-LEDT5-W-F	By the game.
12		GAME BUTTON FILM	3	PET t=0.2	By the game.
13		PUSH BUTTON	10	SS-25KK-W-LEDT5-W-F	By the game.
14		GAME BUTTON FILM	10	PET t=0.2	By the game.
15		PUSH BUTTON	2	SS-41KK-X-LEDT5-W-F	By the game.
16		GAME BUTTON FILM	2	PET t=0.2	By the game.
17	0EK042400	COIN ENTRY BLIND PLATE	(1)	SECC t=1.2	By customer's demand.
18		STICKER	(1)		By customer's demand.
19	0EK044100	BUTTON BLIND ASM(B)			By the game
20	0D4114200	BLIND PLATE WASHER		SECC t=1.2	By the game
21	0EK042300	BV BLANK PANEL ASM	(1)		By customer's demand.
22		STICKER	(1)		By customer's demand.

No. 9

DOOR ASSEMBLY (1/2)



DOOR ASSEMBLY (1/2) (PARTS LIST)

No. 9

ITEM	PART NO.	PARTS NAME	Q'TY	MATERIAL/TYPE	REMARKS
1	0EK016900	MAIN DOOR LOCK PIN BRKT	2	SECC t=1.6	
2	0EK017000	BELLY DOOR LOCK PIN BRKT	2	SECC t=1.6	
3	0EK017200	DOOR SENSOR BASE	1	SECC t=1.2	
4	0D4106600	DOOR LOCK SHAFT	4	SUS303 ϕ =6	
5	0EK017300	DOOR LOCK SPACER	4	SUS303	
6	0EK016500	ASSY DOOR MAIN FRAME	1		
7	2EK005300	INTERFACE BEZEL	1	ABS	
8	0EK016700	DOOR EXTRUSION R	1	A6063-T5	
9	0EK016600	DOOR EXTRUSION L	1	A6063-T5	
10	2EK006500	ST ARUZE	1	PC t=0.5	
11	2EK006600	ST BV FACE S (ENG)	1	PC t=0.5	
12	2EK043200	PRINTER BEZEL ASM	1	ABS	
13	CEK001000	BD-GM-PRI-LED	1	P509007-0101YK	
14	0EK021500	PRINTER CHUTE ASM	1		
15	2D7003600	ST PR BEZEL ENG S	1	PC t=250 μ m	
16	2EK010800	MONITOR MASK ASM	1	CHROMIUM	Varies according to spec.
16	2EK042000	MONITOR MASK AUS ASM	1	BLACK	
17	2EK010900	MONITOR MASK LED LENS	2		
18	600205500	OUTPUT PHOTO SENSOR	1	KB875-AZ12LF	
19	810346100	NOISE GROUNDING CLAMP	3	EMT-3N	
20	2D4106600	SPONGE FOR HOPPER	1	CR	
21	2ZZZ55200	SPONGE FOR SEAL (WD)	1		
22	0EK034000	PTS BLANK PANEL	1		
23	0EK008300	REFLECTOR BRKT L ASM	1		
24	2EK007900	DOOR REF FRONT CASE L	1		
25	2EK008000	DOOR REF REAR CASE L	1		
26	2EK008100	SPEAKER BOX L	1	ABS	
27	601134001	SPEAKER	2	F02210D0	
28	0EK008400	SPEAKER COVER PANEL	2	SECC	
29	0EK008200	SPEAKER NET L	1		
30	0EK009100	REFLECTOR BRKT R ASM	1		
31	2EK008700	DOOR REF FRONT CASE R	1	ABS	
32	2EK008800	DOOR REF REAR CASE R	1	ABS	
33	2EK008900	SPEAKER BOX R	1	ABS	
34	0EK009000	SPEAKER NET R	1		

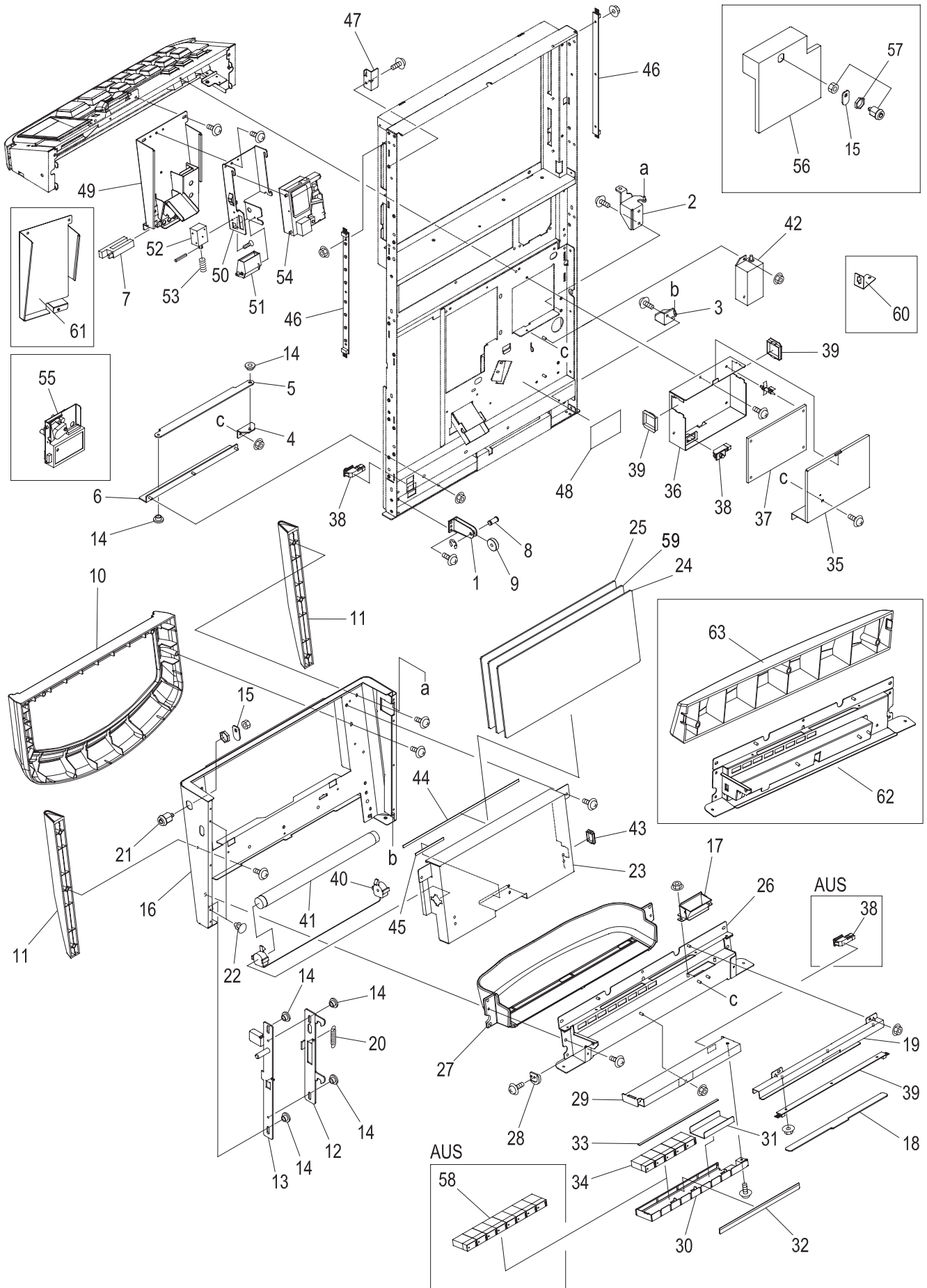
No. 9 DOOR ASSEMBLY (1/2) (PARTS LIST)

ITEM	PART NO.	PARTS NAME	Q'TY	MATERIAL/TYPE	REMARKS
35	2EK018400	RUBBER 300x3x7	3	CR	
36	2EK018500	RUBBER 375x2x7	1	CR	
37	No.11	19IN MAIN LCD ASSEMBLY	1		
38	0EK040100	PRINTER BLANK PANEL	(1)	SECC	By customer's demand.
39	2EK000040	SPONGE FOR LOW TOP DOOR	(1)		By customer's demand.

SERVICE MEMO

No. 10

DOOR ASSEMBLY (2/2)



DOOR ASSEMBLY (2/2) (PARTS LIST)

No. 10

ITEM	PART NO.	PARTS NAME	Q'TY	MATERIAL/TYPE	REMARKS
1	0EK016800	DOOR ROLL BRKT ASM	1		
2	0EK004600	BELLY DOOR HINGE UPR ASM	1		
3	0EK004700	BELLY DOOR HINGE LWR ASM	1		
4	0EK004800	BELLY DR SLIDE GUIDE A	1	SPCC t=2.0	
5	0EK004900	BELLY DR SLIDE GUIDE B	1	SPCC t=2.3	
6	0EK005000	BELLY DR SLIDE GUIDE C	1	SPCC t=2.3	
7	600205002	DROP COIN SENSOR	1	KI1123-UVLF	
8	0D4107000	DOOR ROLLER SHAFT	1	SUS303 $\phi=7$	
9	0C0108200	PLASTIC ROLLER	1	DR-26-H6	
10	2EK007600	BELLY DOOR COVER(GX)	1	ABS/CHROMIUM	Varies according to spec.
10	2EK042100	BELLY DOOR COVER(AUS)	1	ABS/BLACK	Varies according to spec.
11	2EK007500	BELLY DOOR MALL	2	ABS/ CHROMIUM	Varies according to spec.
11	2EK043000	BELLY DOOR MALL(AUS)	2	ABS/ BLACK	Varies according to spec.
12	0EK019400	BELLY DOOR KEY PLATE	1	SECC t=2.3	
13	0EK019300	BELLY DOOR KEY HOOK ASM	1		
14	0D4014200	LOCK SLIDER COLLAR	8	C3601BD $\phi=10$	
15	0EK007300	BELLY DOOR LOCK PLATE	1(2)	SECC t=2	
16	0EK007000	BELLY DOOR COVER ASM	1		
17	0EK007200	COIN TRAY CHUTE ASM	1		
18	2EK007400	BELLY DOOR LED PLATE	1	PC t=2	
19	0EK007100	BELLY DOOR LED COVER	1	SECC t=1.2	
20	0EK019500	EXTENSION SPRING	1	E-593	
21	601302100	KEY B2155 ROHS	1	F750-MSDS-L90 B2155 RoHS	
22	2L3105000	PLUG CUSHION RUBBER	2	TM-96-3	
23	0EK018600	BELLY REFLECTOR	1	SECC t=1.2	
24	2EK018700	BELLY ACRYLIC	1	PC t=3	
25	2EK018800	BELLY GLASS	1	t=3	
26	0EK019600	COIN TRAY BASE ASM	1		
27	0EK019700	COIN TRAY	1	ADC12/CHROMIUM	Varies according to spec.
27	0EK043100	COIN TRAY(AUS)	1	ADC12/BLACK	Varies according to spec.
28	2C0007400	DOOR GUIDE	1	POM	
29	CEK002200	ML2 DR COUNTER BRKT ASM	1		
30	0D4109200	INNER COUNTER BKT	1	SECC-C t=1.0	
31	0D4109400	DUMMY COUNTER (3P)	1	SECC-C t=0.8	
32		PLATE COUNTER 5 (SA,CE)	1	PC t=0.5	Varies according to spec

No. 10 DOOR ASSEMBLY (2/2) (PARTS LIST)

ITEM	PART NO.	PARTS NAME	Q'TY	MATERIAL/TYPE	REMARKS
33	2D4107000	SPONGE FOR COUNTER FIX	1	C-4305	
34	609933300	COUNTER	1	GC-127BA-5L800	
35	0EK021300	DOOR IO COVER	1	SECC t=1.2	
36	0EK013000	DOOR IO CASE	1		
37	CEK000900	DOOR-C PCB (PF)	1	UA2054-1C (PF)	
38	600138000	DOOR SWITCH	2(3)	SDKNA 20600	
39	810338200	EDGING SADDOL	2	TSB-3027	
40	602373200	FL SOCKET UNIT	1	UNV-09	
41	602305200	FL 10W	1	FL10N	
42	602405400	FL DC INVERTER UNIT	1	AN-151F-1 ROHS	
43	810338000	EDGING SADOL	1	TSB-1915	
44	2EK018900	BELLY GLASS SPONGE A	1	CR	
45	2EK019000	BELLY GLASS SPONGE B	1	CR	
46	CEK000400	BD-GM-M2 LED4	3	P509008-0101TI	
47	0EK017100	DOOR SW BRKT	1	SECC t=1.2	
48	2EK006800	ST W HIGH VOLTAGE UL	1	PET t=0.75	
49	CEK006600	ASSY DIVERTOR BRKT	1		
50	0C0106800	DIVERTER BKT	1	SECC-C 1.6t	
51	2C0106200	DIVERTER CHUTE	1	POM	
52	600421800	DIVERTER SOLENOID	1	G836-AR51E DC12V	
53	0A0120400	SOLENOID SPRING	1	SWP	
54		COIN COMPARITOR	1	CONDOR CP-130	By token size.
55		COIN COMPARITOR	1	COINMECH MC-62	By token size.
56	0EK011900	BODY IO COVER(AUS)	(1)		Varies according to spec
57	601312002	KEY B1963 ROHS	(1)	F750-MSDS-L90B1963 RoHS	
58	609933400	COUNTER	(1)	GC-127BA-8L700	
59		BELLY FILM	1		By the game
60	0EK020000	GAT3 BRKT	(1)		Varies according to spec
61	0EK043900	DIVERTOR BLANK BRKT	(1)	SECC	By customer's demand.
62	0EK043700	COINLESS BASE ASM	(1)		
63	2EK043800	COINLESS MALL	(1)	ABS	

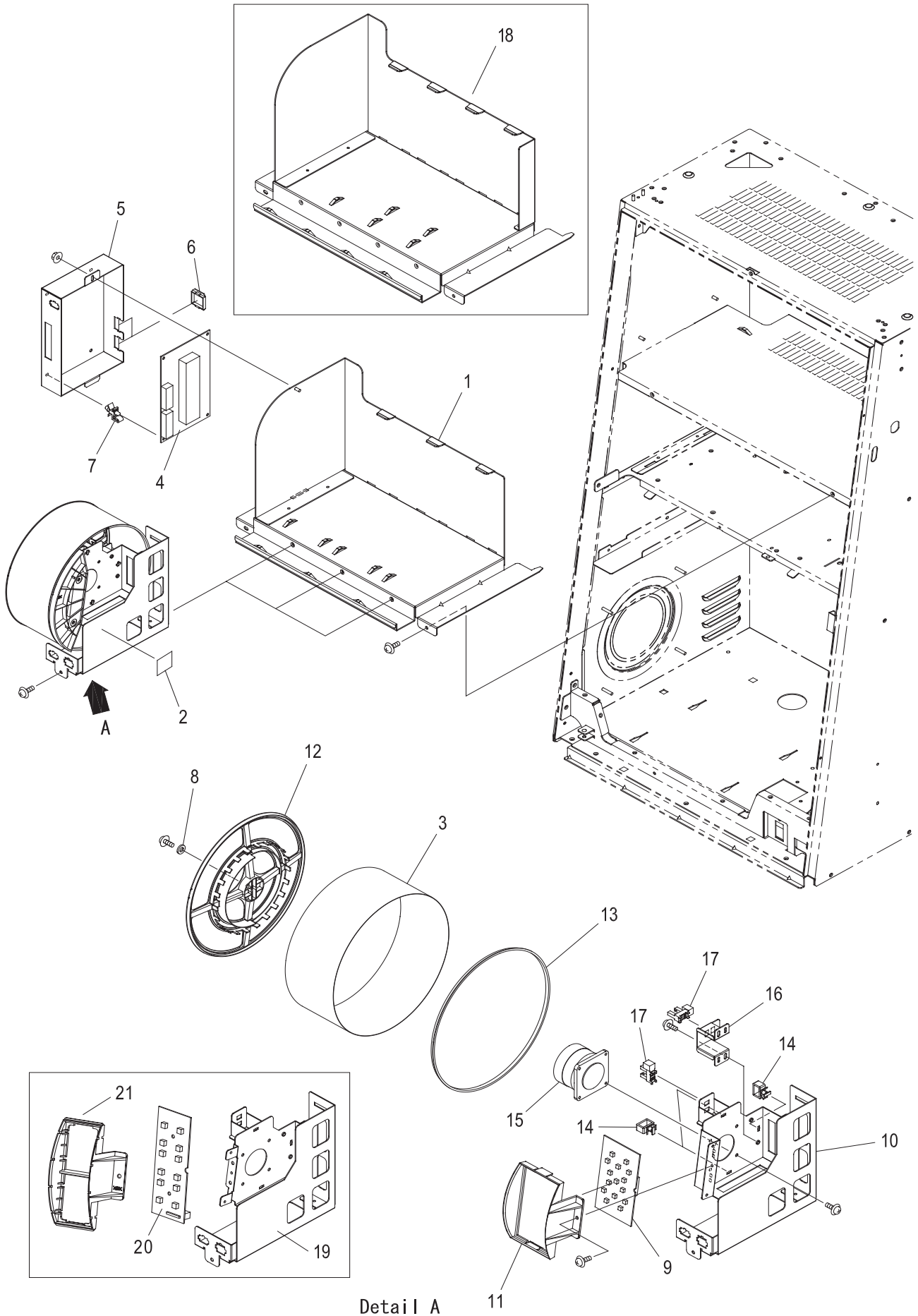
SERVICE MEMO

19IN MAIN LCD ASSEMBLY (PARTS LIST) No. 11

ITEM	PART NO.	PARTS NAME	Q'TY	MATERIAL/TYPE	REMARKS
1	CEK002100	19LCD REAR COVER ASM	1		
2	0EK031900	19LCD ADJUSTER BRKT UNDER 2	1		
3	810346200	CLAMP	1	EMT-6N	
4	2EK031500	19LCD UNDER RUBBER 1	1		
5	2EK031600	19LCD UNDER RUBBER 2	2		
6	0EK031400	19IN TOUCH PANEL PCB COVER	1		
7	810338800	EDGING SADDOL	2	ES-1010	
8	CEK002000	19LCD BASE BRKT ASM	1		
9	2EK031700	T PNL RUBBER	2		
10	810332100	EDGING	2	TE-012 L=20mm	
11	602832000	19IN TOUCH PANEL	1	PTD-7029-D	
12	0EK031800	19LCD ADJUSTER BRKT LR 2	2	SECC	
13	810816600	ONE TOUCH BUSH	2	NB-8	
14	603125900	19IN LCD LM190E03-TLB1	1	LM190E03-TLB1	
15	0EK025600	TOP LCD CASE ASM	1		
16	602426000	LCD BACKLIGHT INVERTER	1	IM6501	
17	2EK025800	INSURATION SHEET	1	PC t=0.5	
18	609926100	DVI/RGB to LVDS PCB	1	SC-3B	
19	0EK025700	TOP LCD REAR COVER ASM	1		
20	2EK006800	ST W HIGH VOLTAGE UL	1	PET t=0.75	
21	2D4106400	LCD RUBBER	6	EPM	
21	2D4106400	LCD RUBBER	2	EPM	For 3 REEL
22	810807800	NYLON BUSH	1	NJ-12	For 3 REEL
23	0EK032400	19LCD ADJUSTER BRKT UNDER	1		For 3 REEL
24	0EK032300	19LCD ADJUSTER BRKT LR	2		For 3 REEL
25	603132900	19inc LCD 3WINDOW	1	CLM190T-3A	For 3 REEL
26	2EK032500	3 REEL WALL PLT UL	2	PMMA	For 3 REEL
27	2EK032600	3-4 REEL SIDE WALL	2(3)	ABS	For 3-4 REEL
28	2EK032700	3-4 REEL SIDE WALL LR	2	ABS	For 3-4 REEL
29	603133200	19inc LCD 4WINDOW	1	CLM190T-4A	For 4 REEL
30	2EK033100	4REEL WALL PLT UL	2	PMMA	For 4 REEL

No. 12

3-4 REEL ASSEMBLY



Detail A

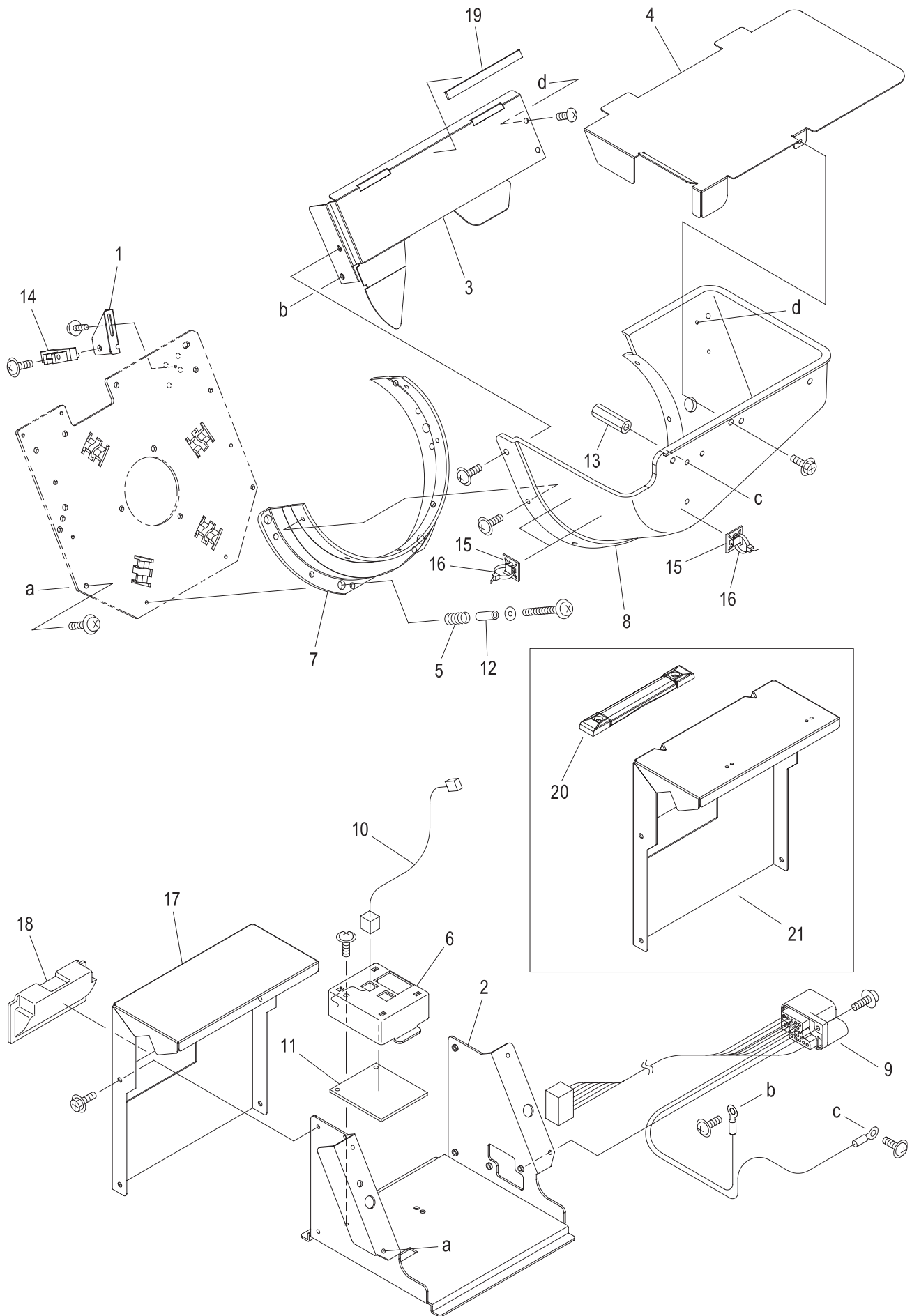
3 REEL ASSEMBLY (PARTS LIST)

No. 12

ITEM	PART NO.	PARTS NAME	Q'TY	MATERIAL/TYPE	REMARKS
1	CEK001200	3REEL BASE ASM	1		For 3 REEL
2	2EK028300	ST C NOT TOUCH UL	3(4)	PET t=0.75	For 3-4 REEL
3		REEL TAPE	3(4)	PC t=0.2	By the game
4	CEK001400	BD-GM-M2DRV	1	P509006-0303TI	
5	0EK026900	REEL DRV CASE	1	SECC	
6	810338000	EDGING SADDLE	2	TSB-1915	
7	810291400	EDGE SUPPORT	4	ELBT-4N	
8	20222670	REEL END WASHER	3(4)		For 3-4 REEL
9	CEK001500	BD-GM-BKLED3	3	P509013-0202YA	
10	CEK001300	3 REEL MAIN BASE ASM	3		For 3 REEL
11	2EK028000	3 REEL BL BASE	3	ABS	For 3 REEL
12	2EK027800	REEL DRUM 2066IN	3(4)	ABS	For 3-4 REEL
13	2EK027900	REEL DRUM 2066OUT	3(4)	ABS	For 3-4 REEL
14	810312100	WIRE SADDLE	9(12)	RLWT-1V0	For 3-4 REEL
15	600828100	STEPPING MOTOR	3(4)	103H7121-2141	For 3-4 REEL
16	0EK027700	D SENSOR BASE	3(4)	SECC	For 3-4 REEL
17	600290700	PHOTO SENSOR	6(8)	KI1306-AA	For 3-4 REEL
18	CEK001700	4REEL BASE ASM	1	SECC	For 4 REEL
19	CEK001800	4REEL MAIN BASE ASM	4		For 4 REEL
20	CEK001900	BD-GM-BKLED4	4	P509014-0202YA	For 4 REEL
21	2EK028900	4REEL BL BASE	4	ABS	For 4 REEL

No. 13

GM HOPPER ASSEMBLY (1/2)



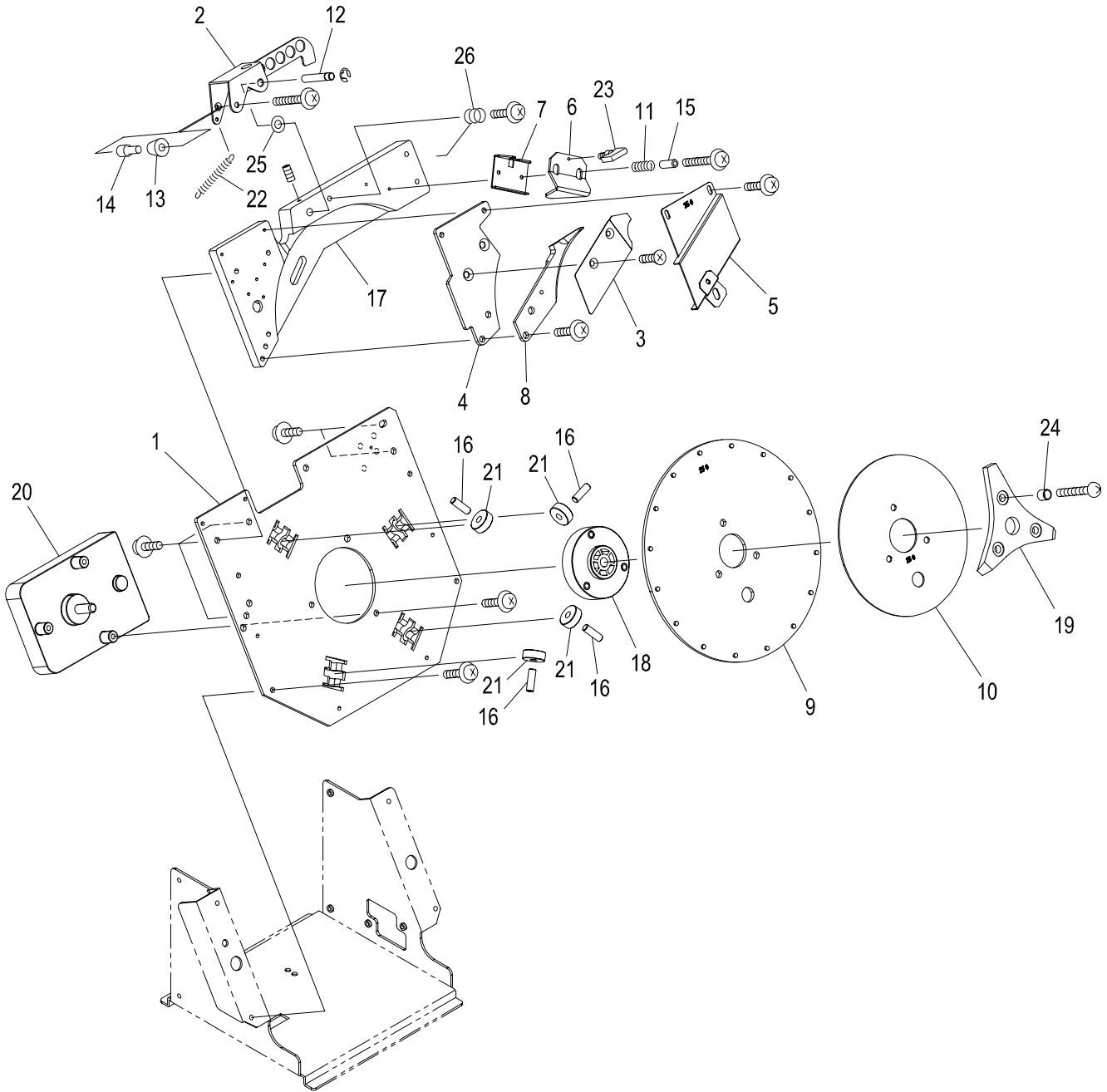
GM HOPPER ASSEMBLY (1/2) (PARTS LIST)

No. 13

ITEM	PART NO.	PARTS NAME	Q'TY	MATERIAL/TYPE	REMARKS
1	0C0306800	SENSOR BKT	1	SECC-C 1.0t	
2	0D4305000	HOPPER MOUNT BASE	1	SECC-C 2.0t	
3	0D4305200	HOPPER BUCKET PARTITION	1	SUS 430-CP 1.0t	
4	0D4305400	HOPPER COVER	1	SECC-C 1.0t	
5	0P0308200	HOPPER BUCKET SPRING	4	SWP-B ϕ 1.4	
6	2C0305200	CONTROL BOX	1	ABS	
7	2P0301800	HOPPER BUCKET FLANGE	1	POM	
8	2C0306000	HOPPER BUCKET	1	ABS	
9	3EK035600	GM HOPPER INNER HARNESS	1		
10	3EK035700	GM HOPPER COUNT HARNESS	1		
11	CEK002600	BD-GM-HOPPER	1	98203-MH (ROHS)	
12	0P0310800	SPACER	4	4ER25	
13	0P0311000	SPACER	1	4SP25	
14	600235400	PHOTO SENSOR	1	KI659-AALF	
15	2P8003000	ANP BASE	3	ANP 1D	
16	810105200	TIE BAND	4	PLT1M	
17	0D4305400	HOPPER REAR COVER	1	SECC-C 1.2t	
18	0C0013200	HANDLE	1	AT-100B	
19	2D5007600	SHIELD TIGHT	1	STG4-9L100	
20	0EK036300	HANDLE	(1)	THA-185-2	Varies according to spec
21	0EK036100	HOPPER REAR COVER (AUS)	(1)	SECC-C 1.2t	Varies according to spec

No. 14

GM HOPPER ASSEMBLY (2/2)



GM HOPPER ASSEMBLY (2/2) (PARTS LIST)

No. 14

ITEM	PART NO.	PARTS NAME	Q'TY	MATERIAL/TYPE	REMARKS
1	0C0306400	HOPPER BACK PLATE	1	SPCC-SD 3.2t	
2	0C0306600	COUNT ROLLER ARM	1	SUS 430-CP 1.5t	
3	0C0307000	COIN GUIDE PLATE	1	SUS 304-CSP 0.6t	
4	0C0307200	KNIFE SPACER	1	SPCC-SD 3.2t	
5		COIN SHIELD	1		By token size.
6	0P0302600	COIN WIPER D	1	SPCC-SD 2.0t	
7	0P0302400	WIPER HOLDER	1	SPCC-SD 1.0t	
8		KNIFE	1		By token size.
9		PIN WHEEL	1	SPCC-SD 3.2t	By token size.
10		SHELF WHEEL	1	SUS 430-CP 1.5t	By token size.
11	0P0306000	COIN WIPER SPRING	2	SWP-B ϕ 0.65	
12	0P0309800	COUNT ARM PIN	1	SS400 ϕ 7	
13	0C0309600	COUNT ROLLER	1	SK4 ϕ 16	
14	0C0309800	COUNT ROLLER AXIS	1	SS400 ϕ 10	
15	0P0306200	WIPER SPRING SPACER	2	SS400	
16	0P0308800	ROLLER PIN	4	SK4 ϕ 7	
17	0C0308200	MOUNTING PLATE	1	ADC-12	
18	2C0305000A	PIN WHEEL DRIVE HUB	1	POM	
19	2P0302200	AGITATOR	1	CR RUBBER	
20	600835500	DC MOTOR	1	163DV-2BUVV-L	
21	0P0308600	RADIAL BEARING	4	626ZZ M3SML Y121	
22	0C0309200	EXTENSION SPRING	1	E598	
23	0P0306400	BUTTERFLY BOLT	1	M3 \times 6	
24	0P0310600	SPACER	3	1382309-50055	
25	2C0305600	POLY WASHER	1	CC-0613-10	
26	0P0301800	LEAN SPRING	1		



Aruze Gaming America, Inc.
745 Grier Drive Las Vegas, NV 89119, USA

Aruze Gaming America, Inc. Japan Branch
Ariake Frontier Bldg. A, 3-1-25, Ariake, Kohto-ku, Tokyo, 135-0063

Aruze Gaming Australia Pty. Ltd
23-27 Bourke Road,
Alexandria, NSW 2015, Australia

Aruze Gaming Africa (Pty.) Ltd.
Unit 1-3, Kyalami Village, 57 Forssman Close, Barbeque Down Ext 1, Unit 1,
Kyalami, Midrand, Gauteng, South Africa

©2008 ARUZE CORP. All Rights Reserved.

**CONTENTS OF THIS PUBLICATION MAY NOT BE REPRODUCED IN ANY
WAY FORM WITHOUT WRITTEN PERMISSION OF ARUZE.**

THIS MANUAL MAY BE SUBJECT TO CHANGE WITHOUT PRIOR NOTICE.