



CPM2200K INSTALLATION GUIDE

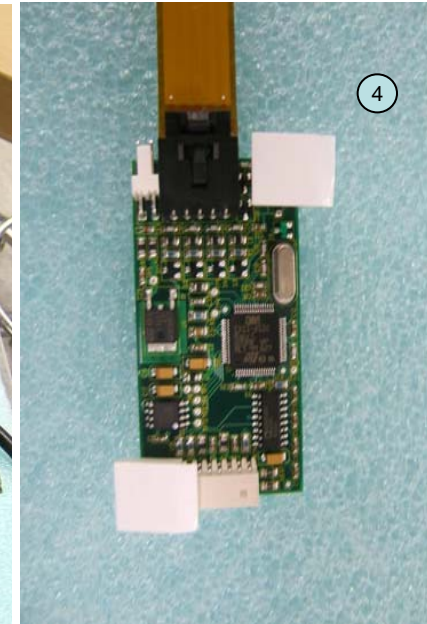
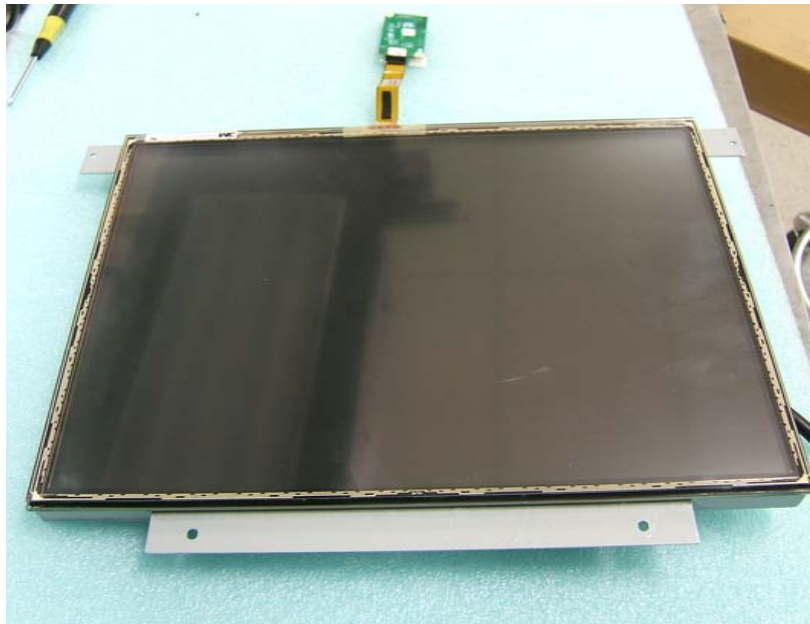
KIT CONTAINS

- ① CPM2147 (DOUBLE SIDED FOAM TAPE APPLIED)
- ② CPM2476 (17" TOUCH SENSOR AND CONTROLLER) – 1PC
- ③ CPM2573 (PCB STANDOFF) – 2PCS
- ④ APS1762 (POWER HARNESS) – 1PC
- ⑤ APS1763 (SERIAL COM HARNESS) – 1PC



- Remove old touch sensor and double sided foam tape from LCD panel.
- Remove release liner from double sided foam tape on new touch sensor.
- Carefully align and apply new touch sensor onto LCD as shown below..
- Place the provided standoffs into the controller board as shown ④.

CPM2476



- Remove release liner on standoffs and place onto back of display as shown (page 2 # ④). Take care not to tear flat flex cable and clean area.
- Plug communication cable (①) in to connector on touch control board as shown.
- Remove 8 pin cable (②) and Plug in touch supply cable APS1762. Plug 2-pin connector (③) into Touch control board as shown.
- The free end of the communication cable needs to be fed through the back of the Atronic Emotion playfield so it can be plugged into the communication port on the logic box.
- Perform touch calibration after unit is installed into machine.

LOCATION IF CPM2317 TOUCH SENSOR

