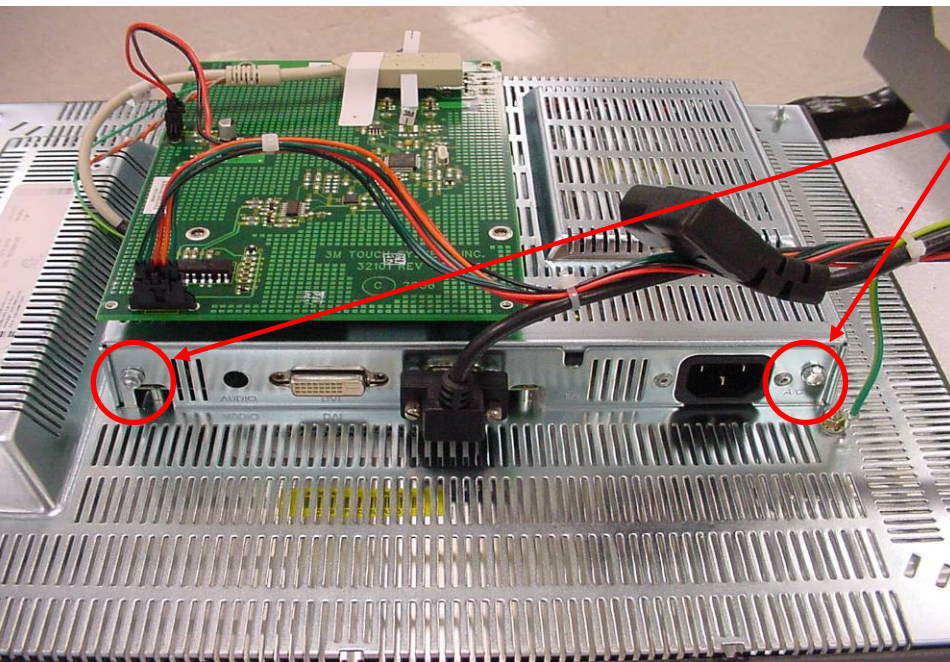


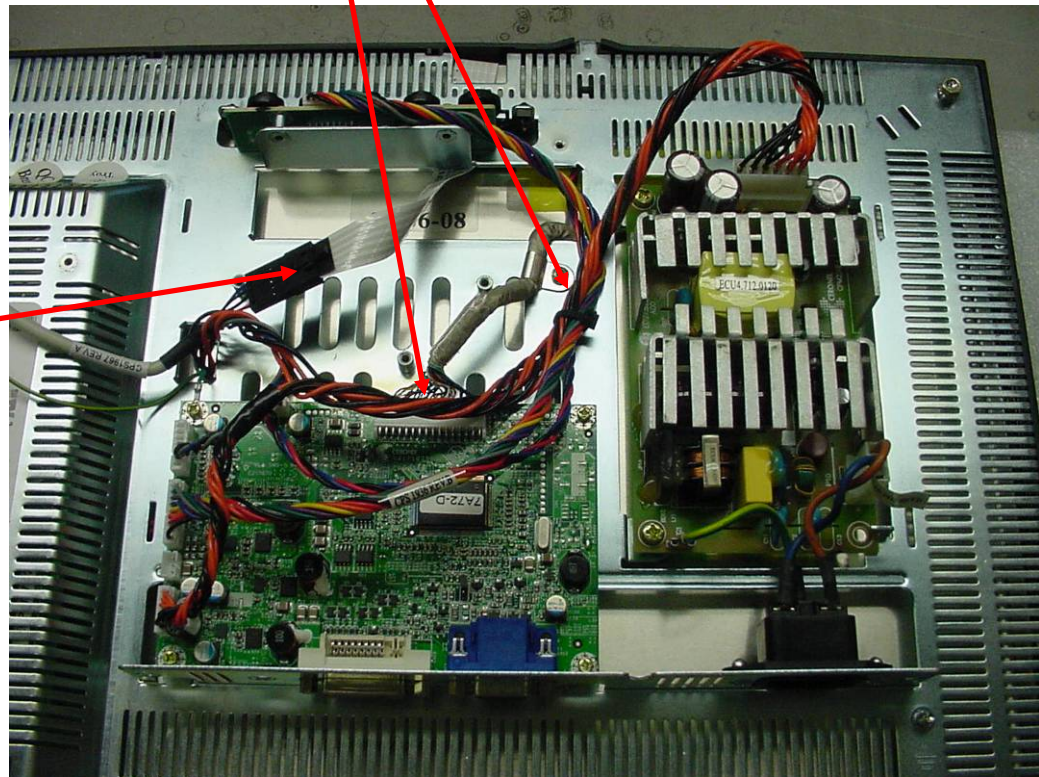
Procedure for replacing Inverter board CPM2253A/CPM2237A

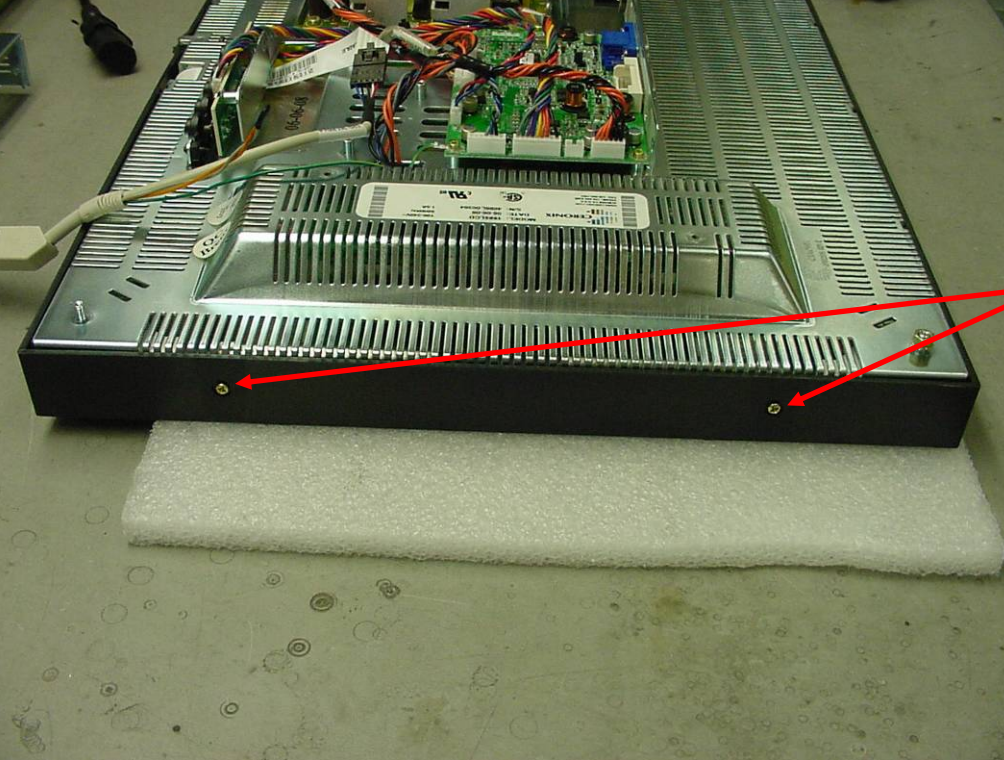


Step 1: Remove the 2 – ¼" drive screws from the back cover. Slide cover back to unlock and remove.

Step 2: Unplug the LVDS and remove phillips screw.

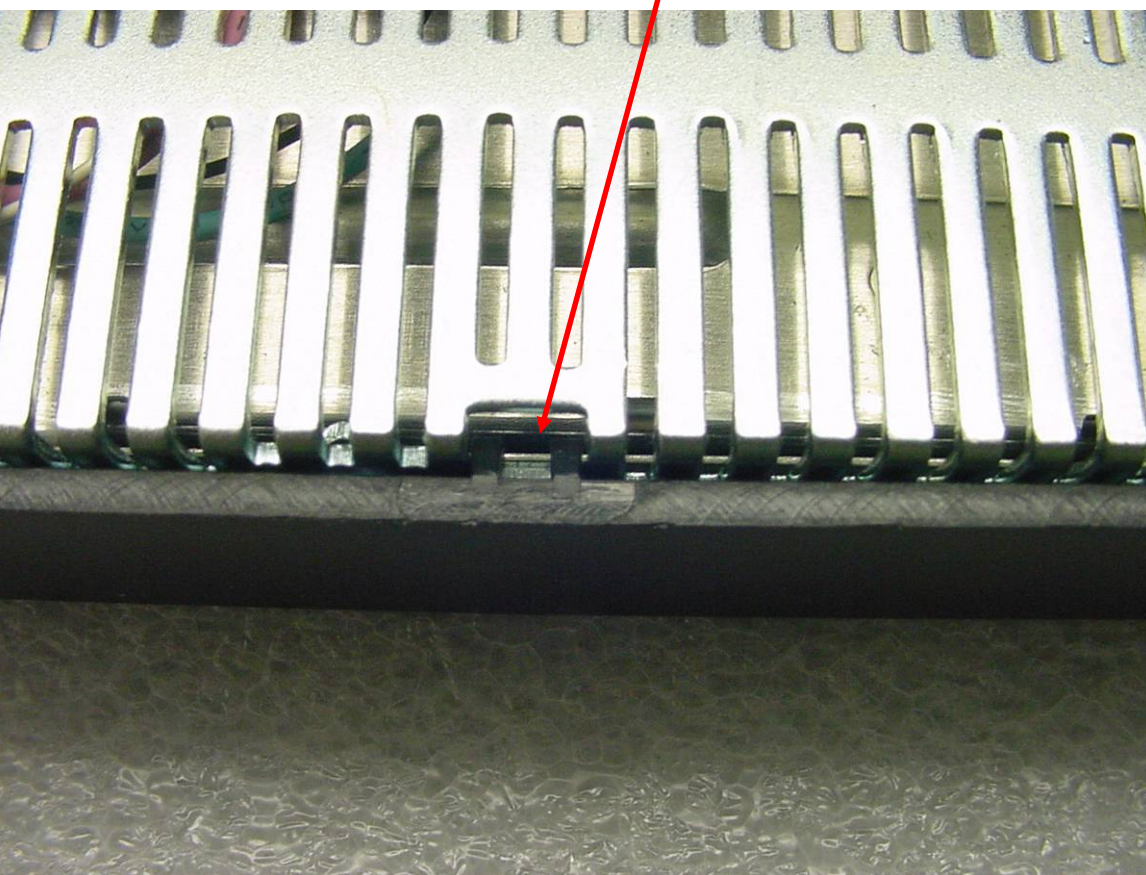
Step 3: Unplug the touch screen ribbon cable.

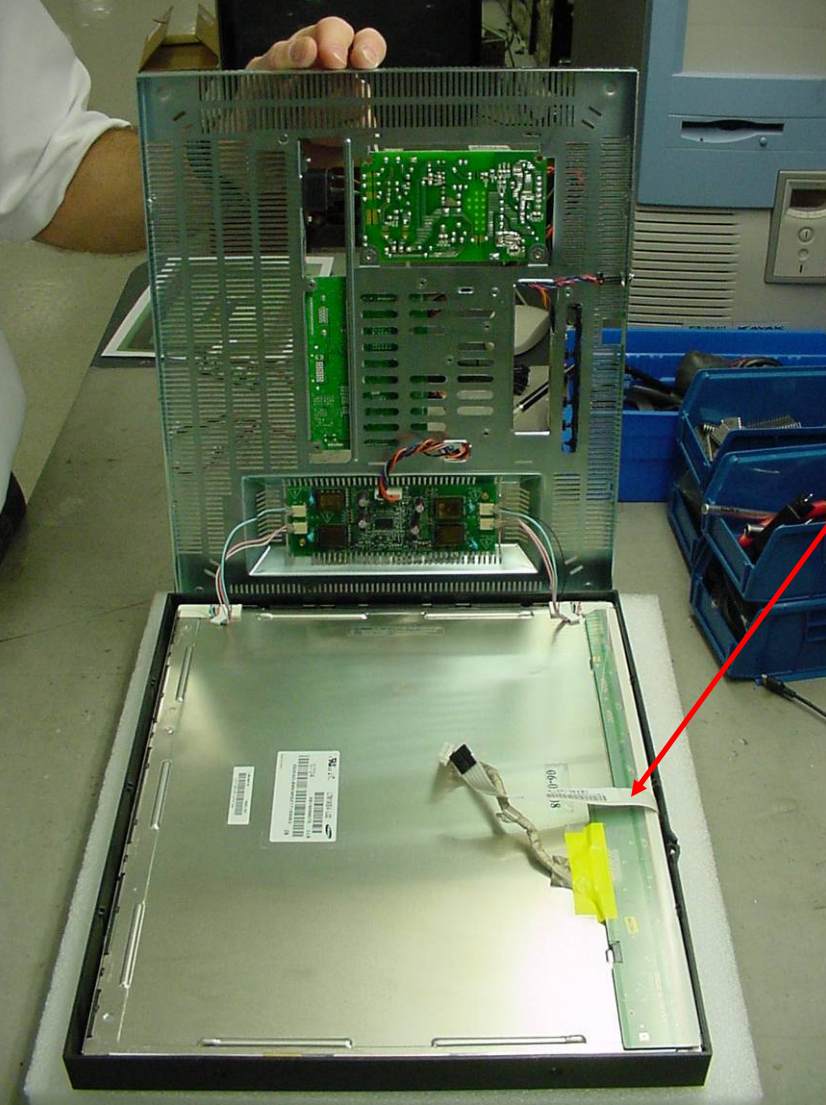




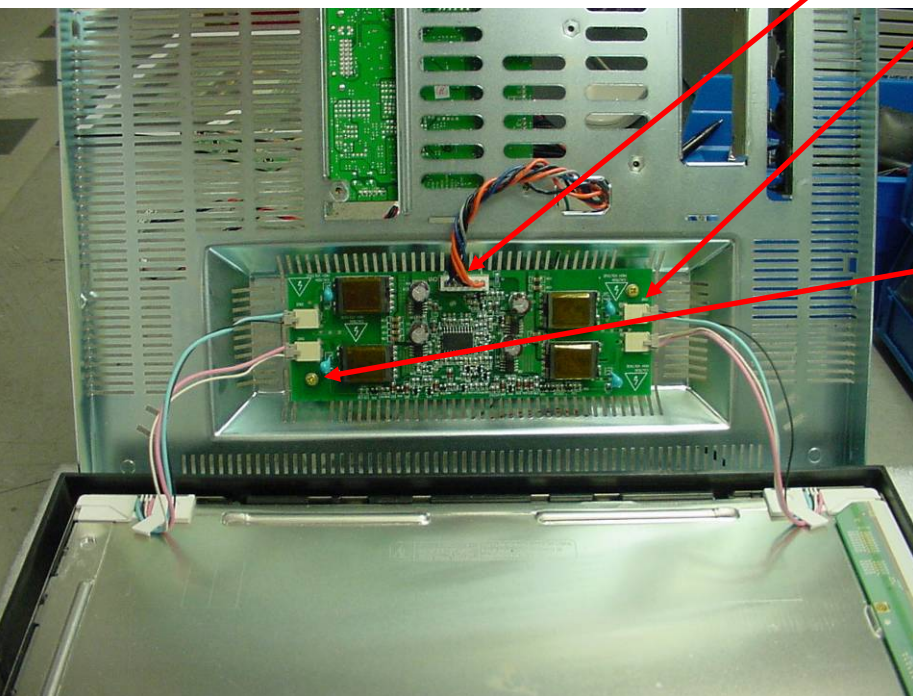
Step 4: Remove
the 4
phillips screws
from
Bezel.

Step 5: release the 6 lock
tabs on bezel.





Step 6: separate the LCD from the frame. Use caution not to tear T/S ribbon and inverter lamp wires.



Step 7: remove the harness and lamp connectors

Step 8: remove the 2 phillips screws and install new inverter

Step 9: repeat all steps
In reverse to assemble.