

Repair Guide

PSA-66-ST



PSA-66-ST (RS232 Interface)
PSA-66-001N (Netplex Interface)

Repair Guide

PSA-66-ST

Copyright © 2001 – 2004 FutureLogic, Inc. All Rights Reserved.

The FutureLogic logo is a trademark of FutureLogic, Inc.

Netplex is a proprietary hardware interface and protocol of International Game Technology Corporation.

All other trademarks and products or brand names mentioned herein are the property of their respective owners.

This document contains Proprietary and Confidential information and its contents are covered by Non-Disclosure Agreement.

Technical information in this manual is disclosed for informational purposes only. No grant of license or use rights of any such information is made by publication or distribution of this manual.

These specifications are subject to change without notice and may not completely and correctly document the operation of this product.

11/30/2004

PUBN-000019

REV.B



The PSA-66-ST (RS232 Interface) printer described in this manual is in compliance with all applied CE standards.

FutureLogic, Inc.
425 East Colorado Street • Suite 100
Glendale, CA 91205 USA
Phone 818.244.4700 • Fax 818.244.4764
www.futurelogic-inc.com

1 Overview

This publication identifies how to perform a high level repair on PSA-66-ST and PSA-66-001N units.



CAUTION!

ESD Sensitive Equipment!

Electronic boards and their components are sensitive to static electricity. Care must be taken during all handling operations and inspections of this product in order to ensure product integrity at all times.

Do not handle this product out of its protective enclosure while it is not used for operations purposes unless it is otherwise protected.

Discharge your clothing before touching the assembly. Discharge tools before use.

Whenever possible, unpack or pack this product only at EOS/ESD safe workstations. Where a safe workstation is not guaranteed, it is important for the user to be electrically discharged before touching the product with his/her hands or tools.



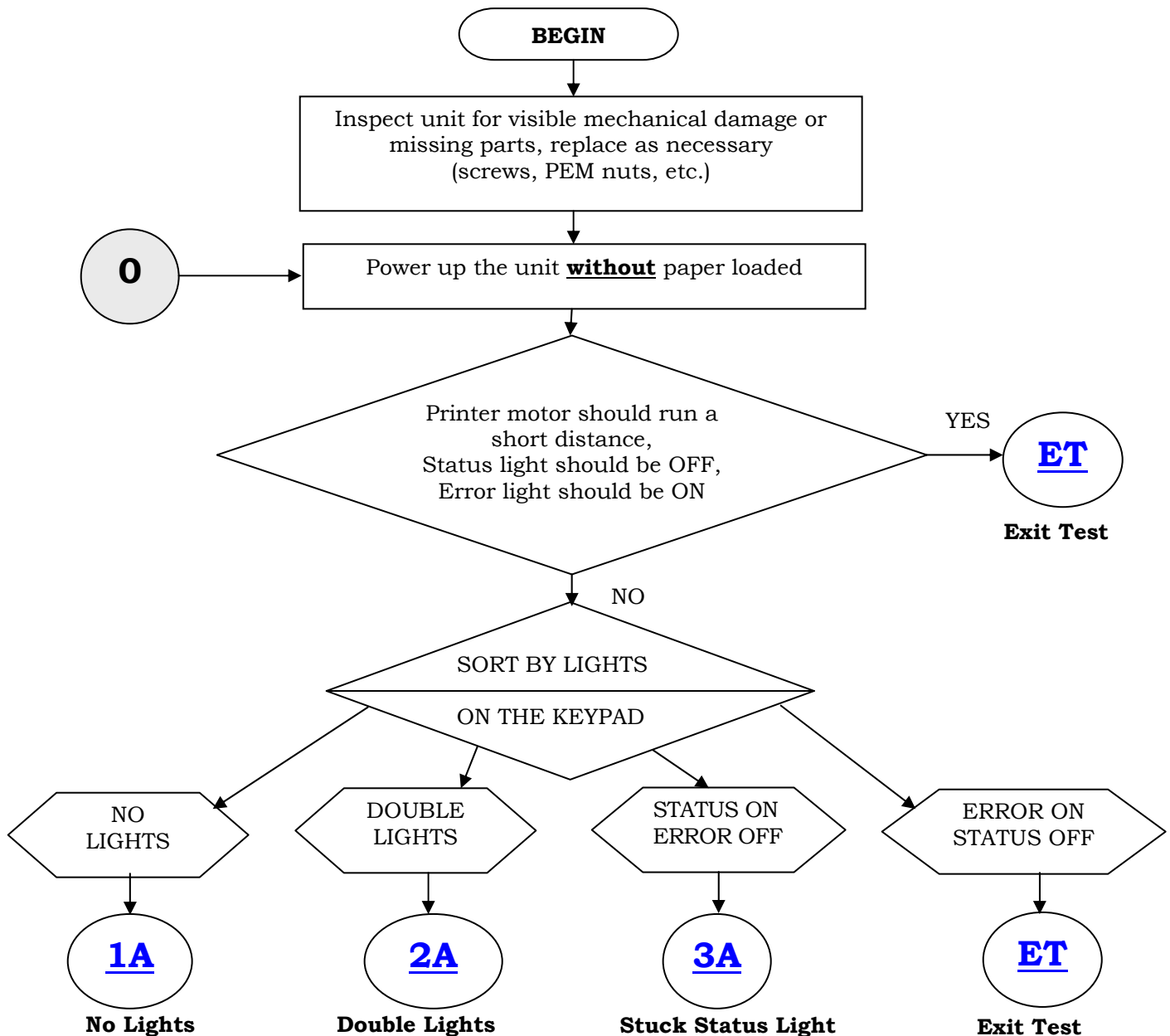
Note: PSA-66-ST refers to both the PSA-66-ST (RS232) and PSA-66-001N (Netplex) versions of the printer. For additional information on the Netplex interface, please contact International Game Technology.

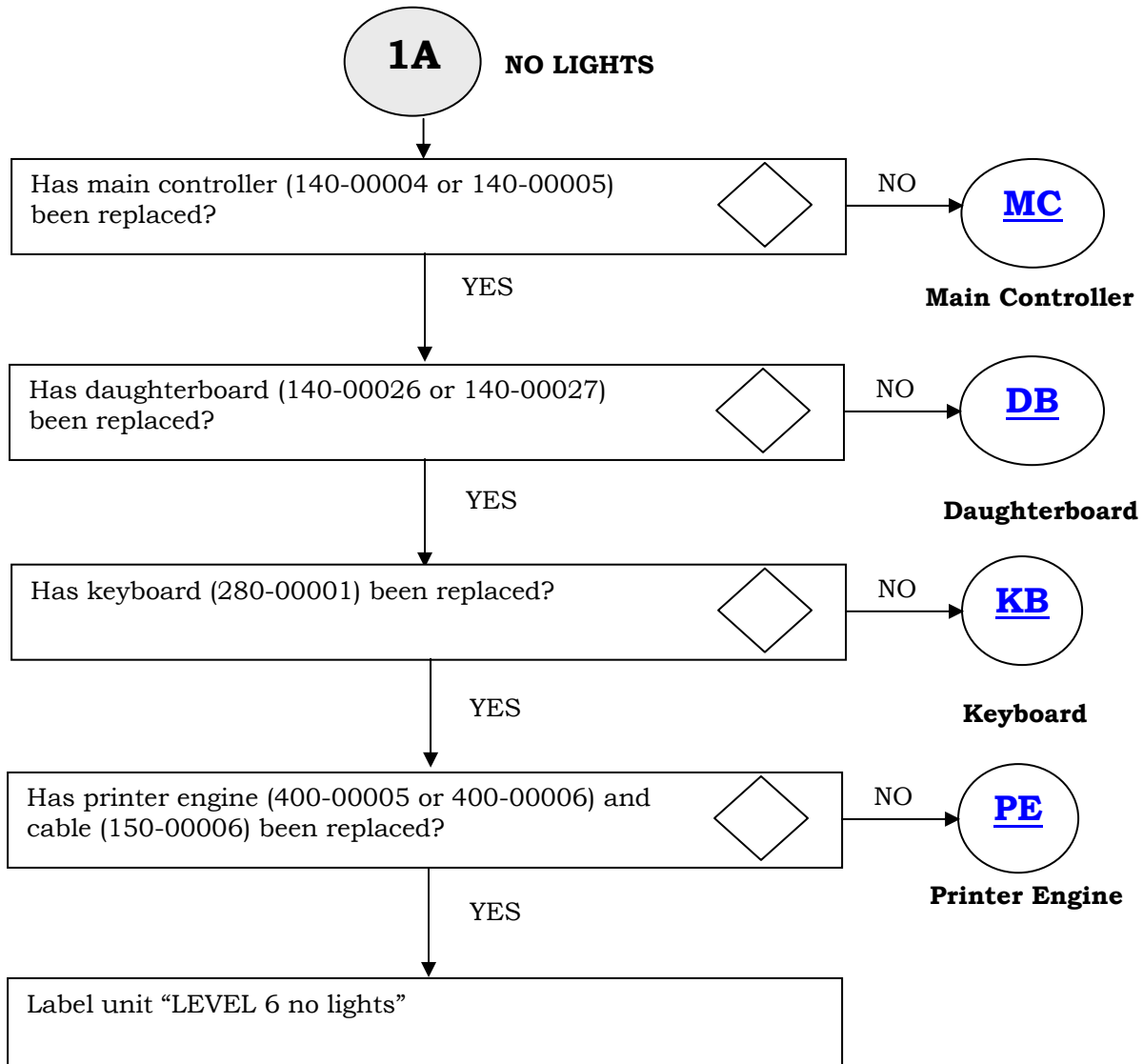
2 High Level Repair

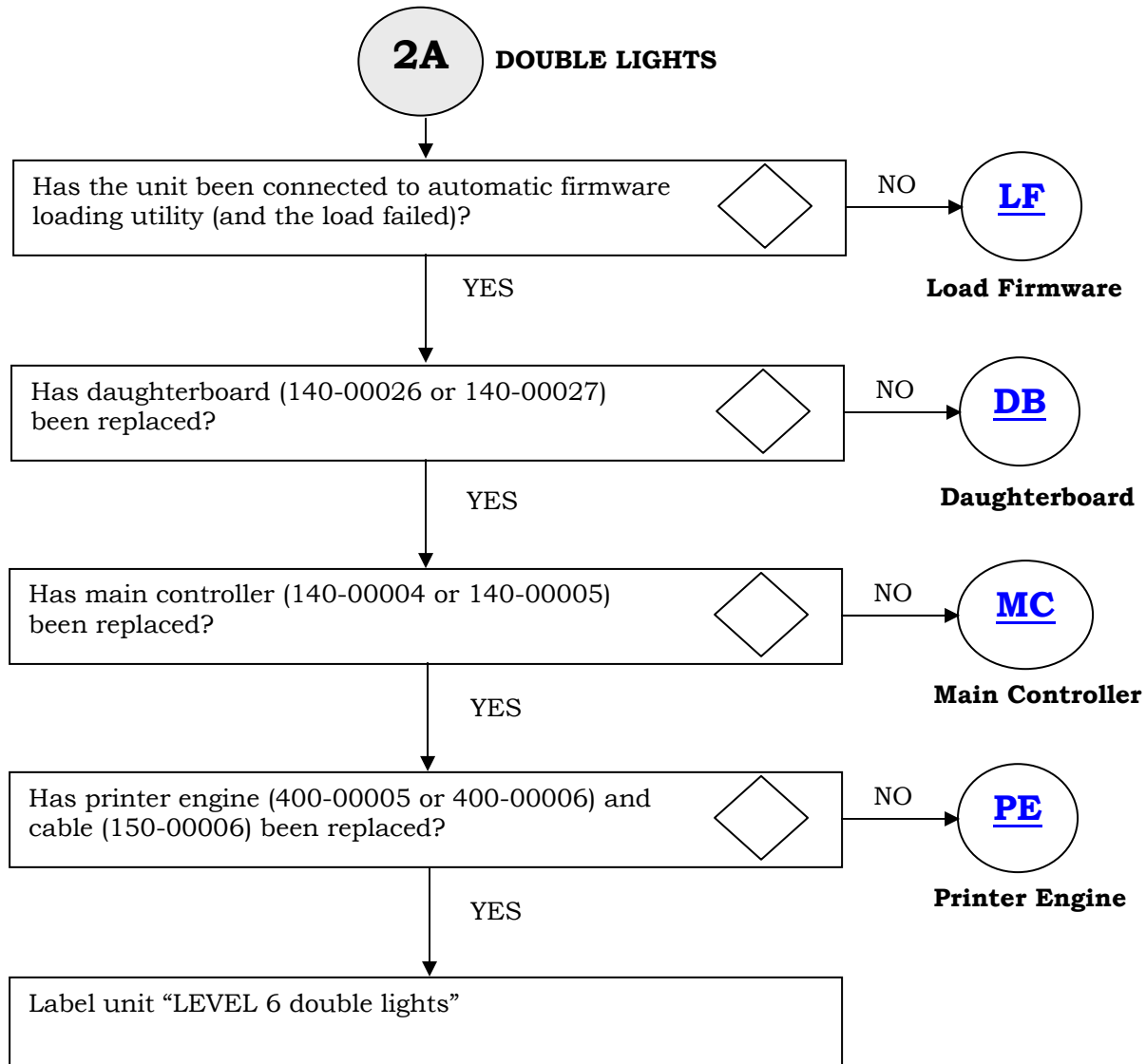
To perform a high level repair of the PSA-66-ST and PSA-66-001N units, follow the procedure below.

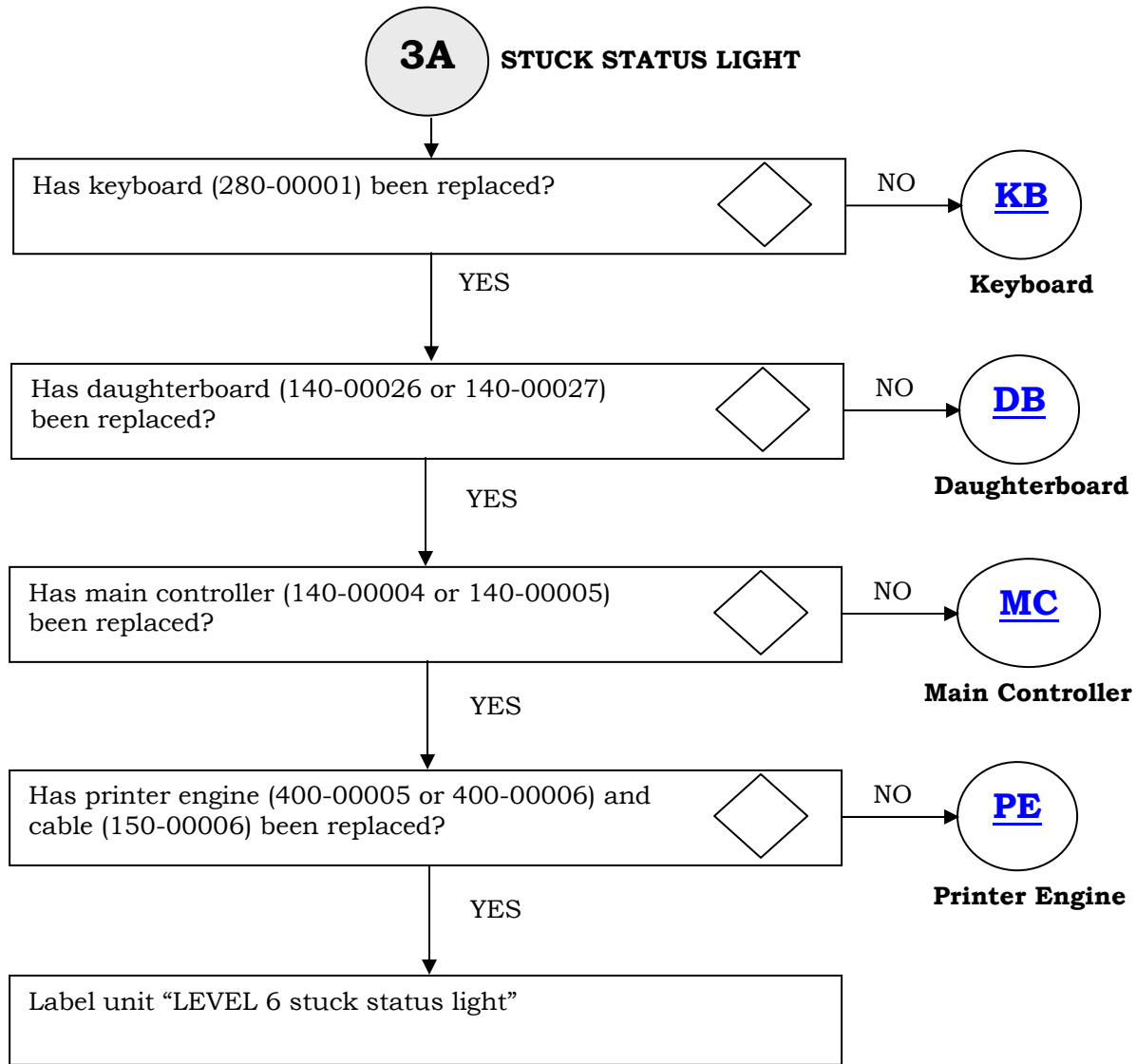


Note: Power must be OFF when connecting, disconnecting or replacing parts within the printer!



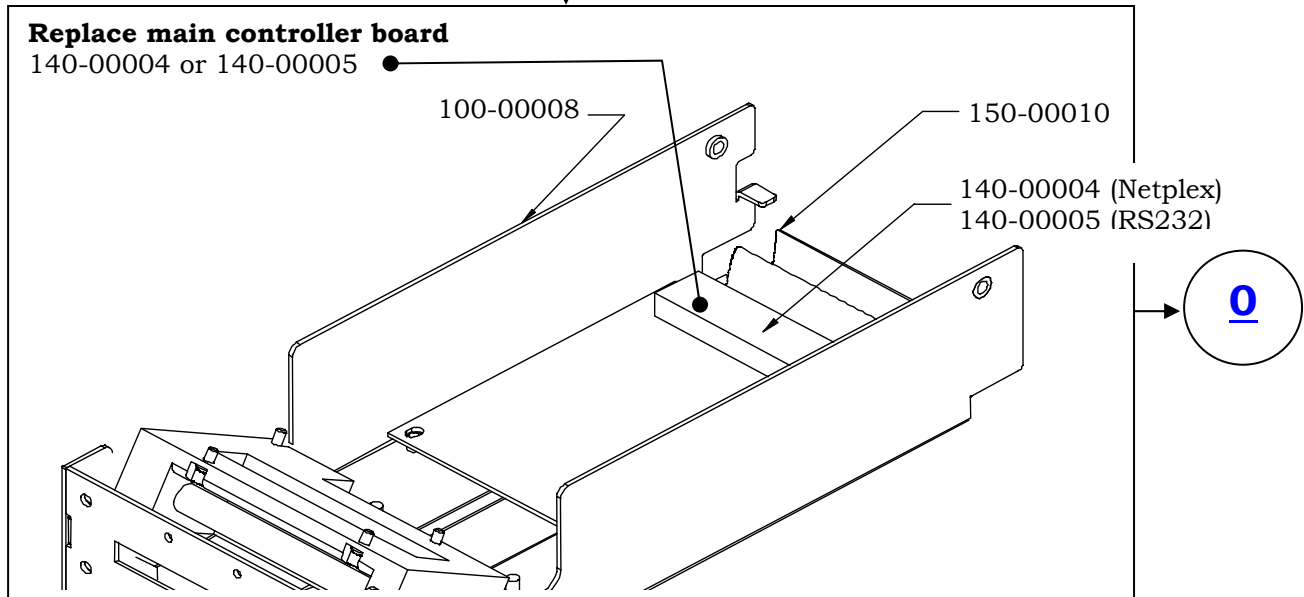




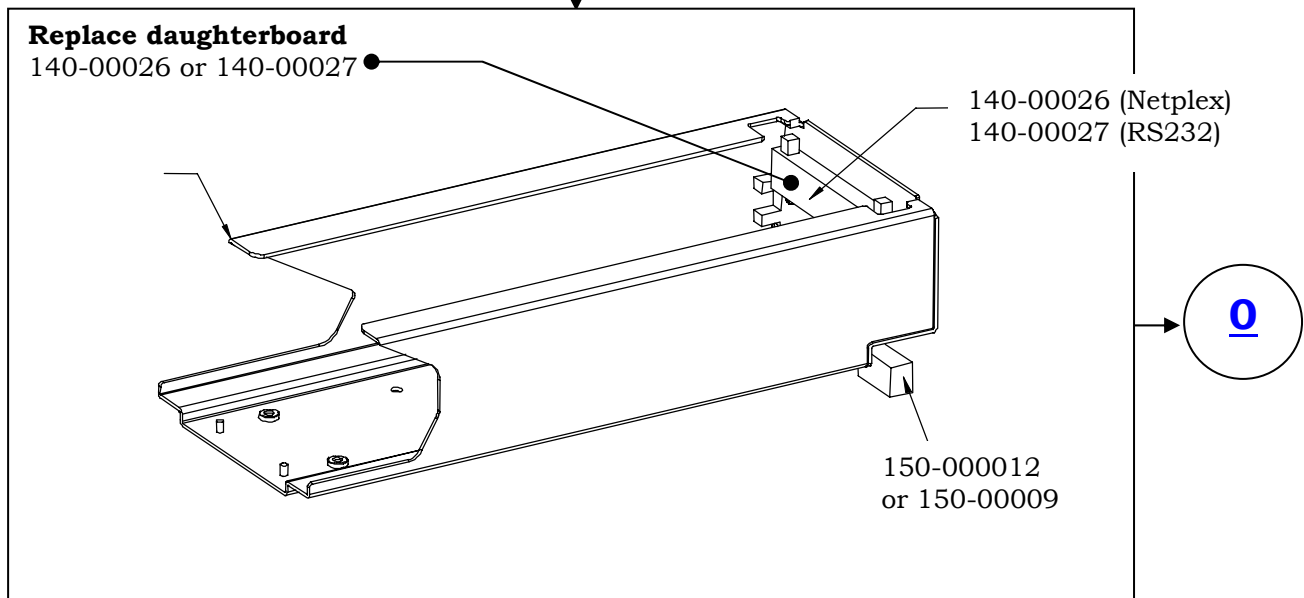


|

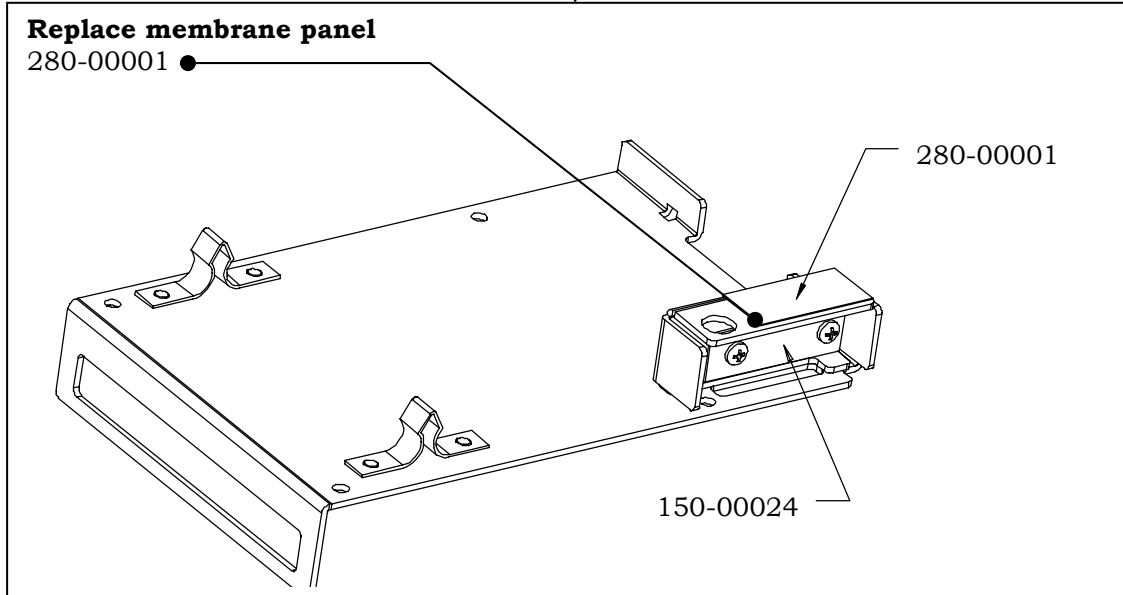
MC Main Controller



DB Daughterboard

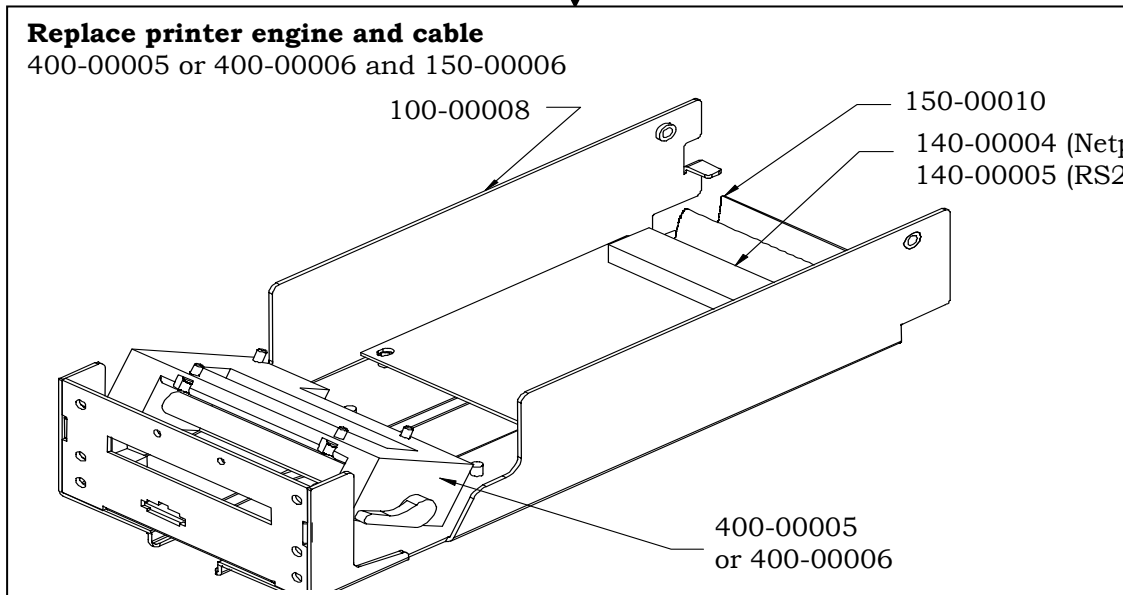


KB Keyboard



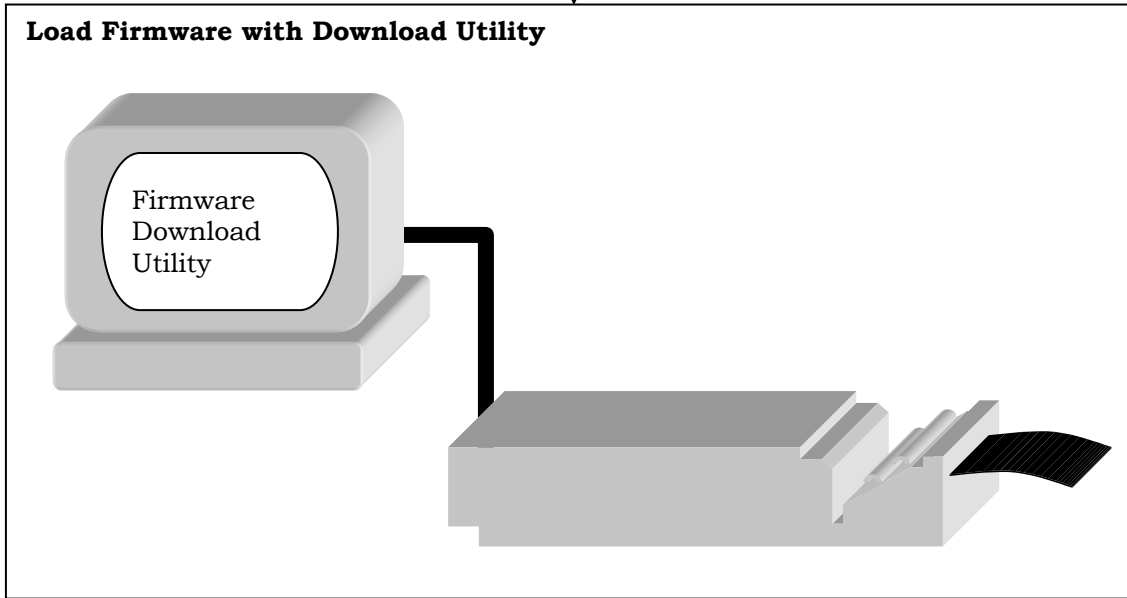
0

PE Printer Engine

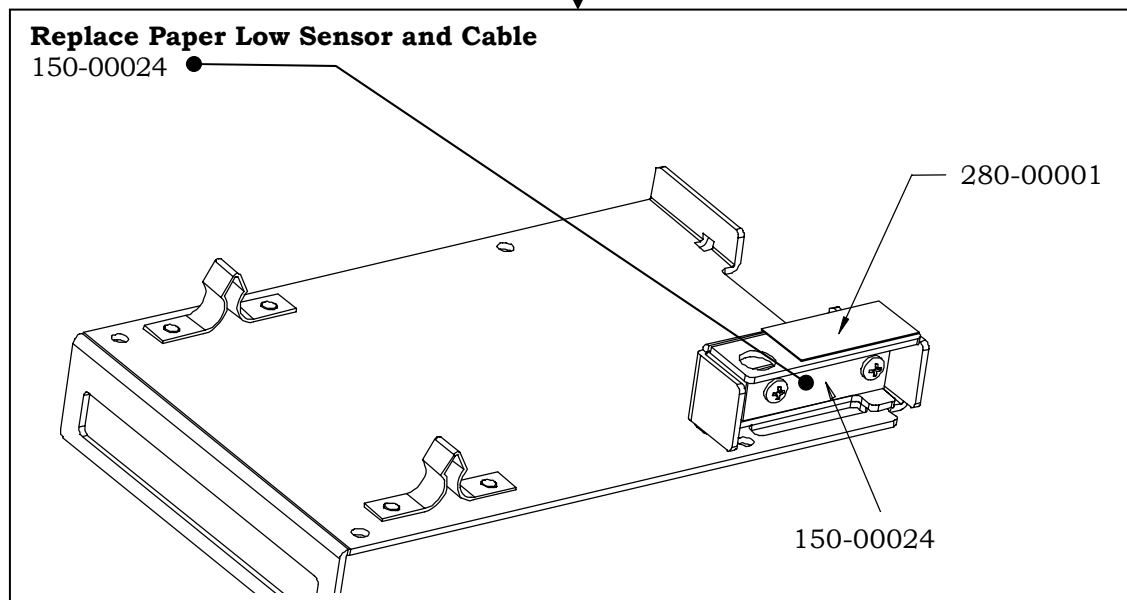


0

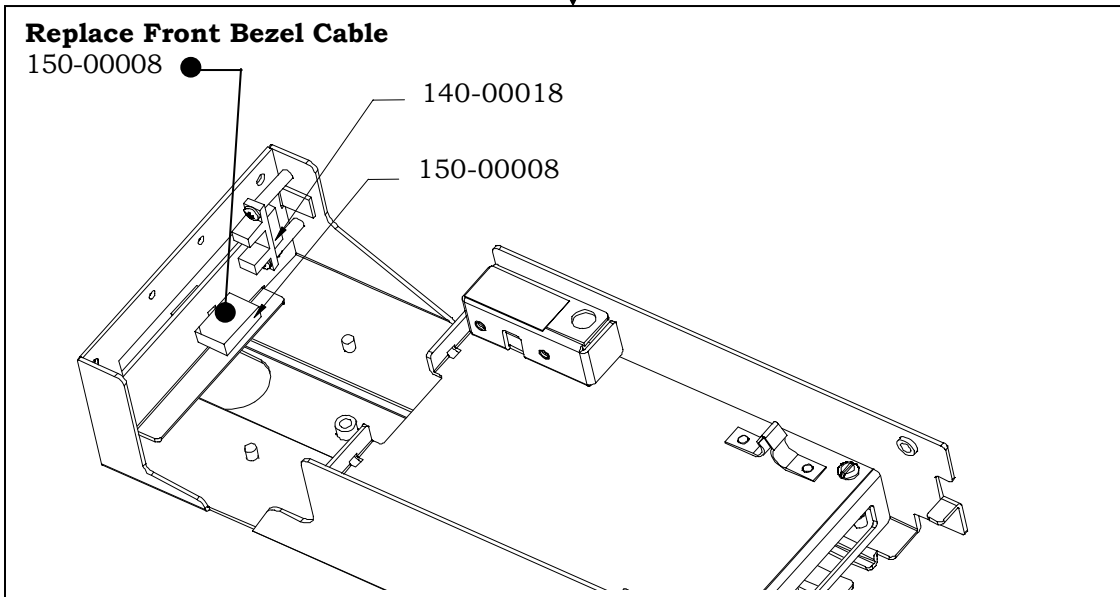
LF Load Firmware



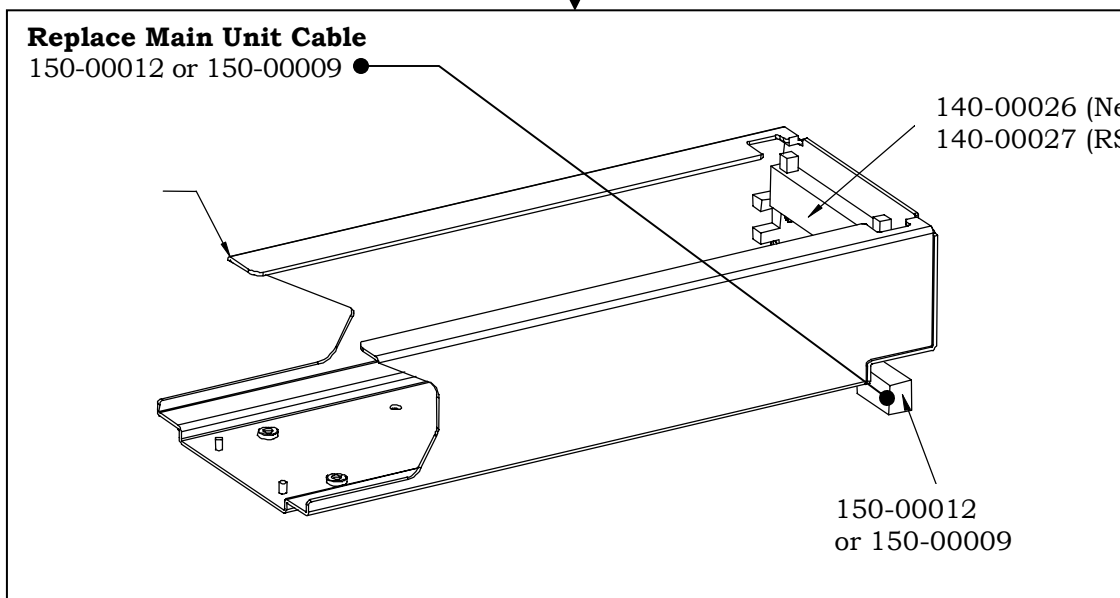
PL Paper Low Sensor Failure



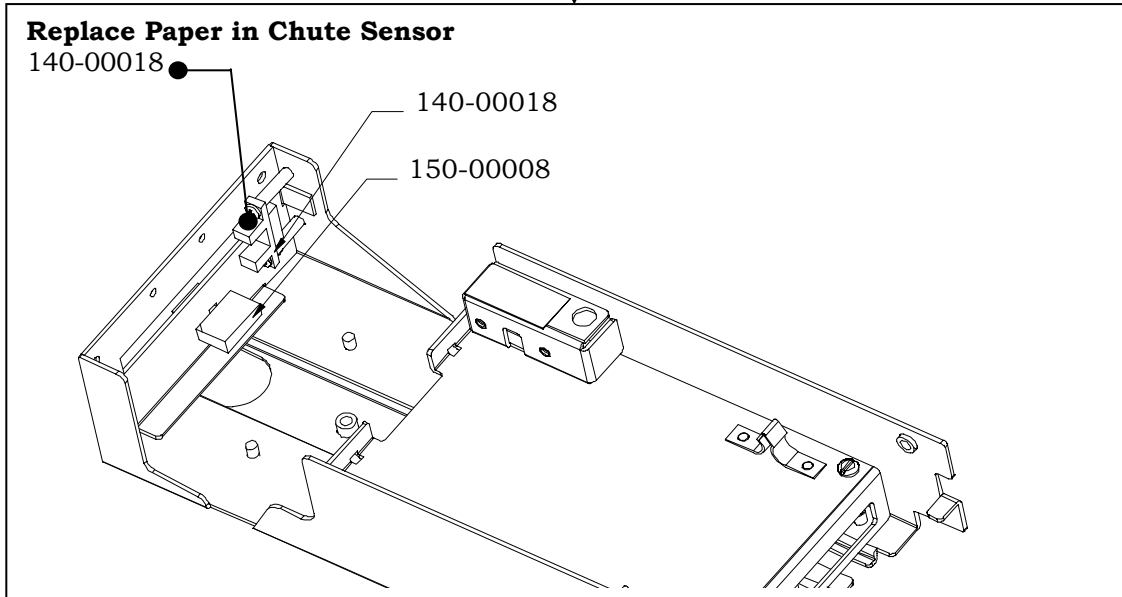
C0 Front Bezel Cable



C1 Main Unit Cable

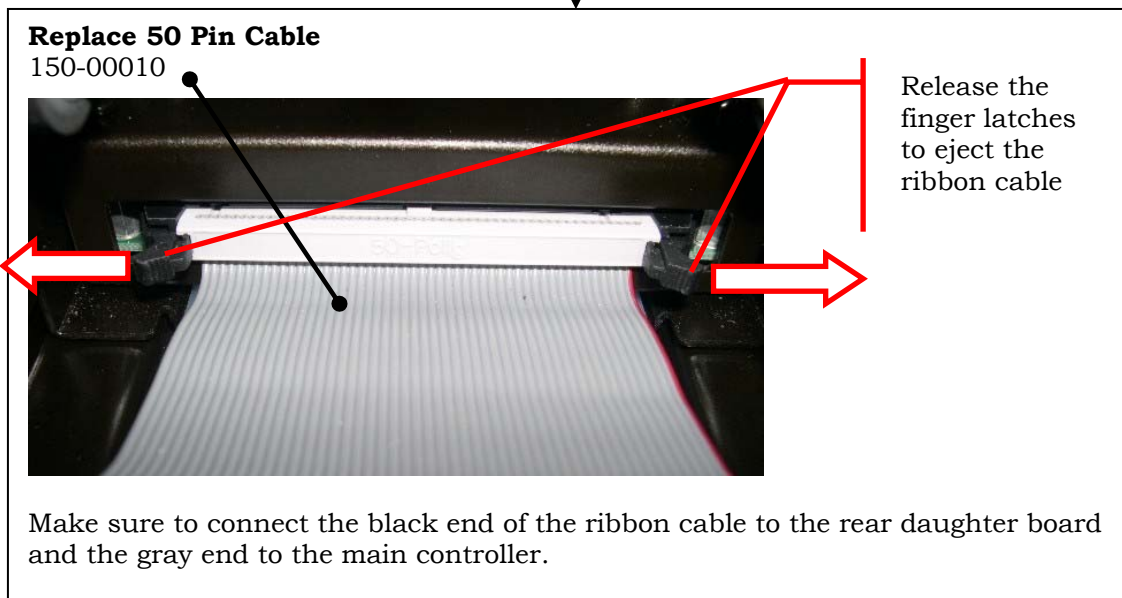


CS Chute Sensor Failure

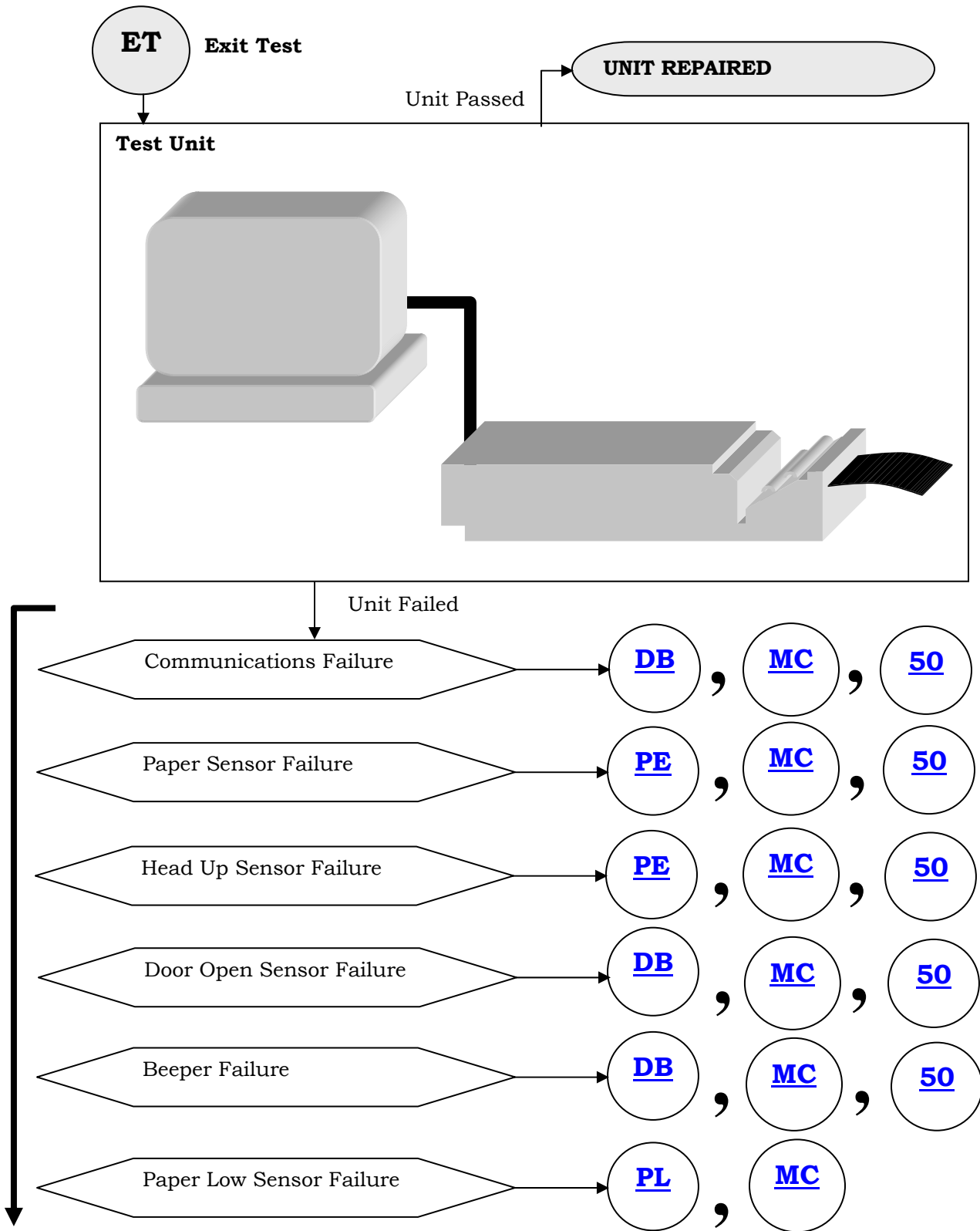


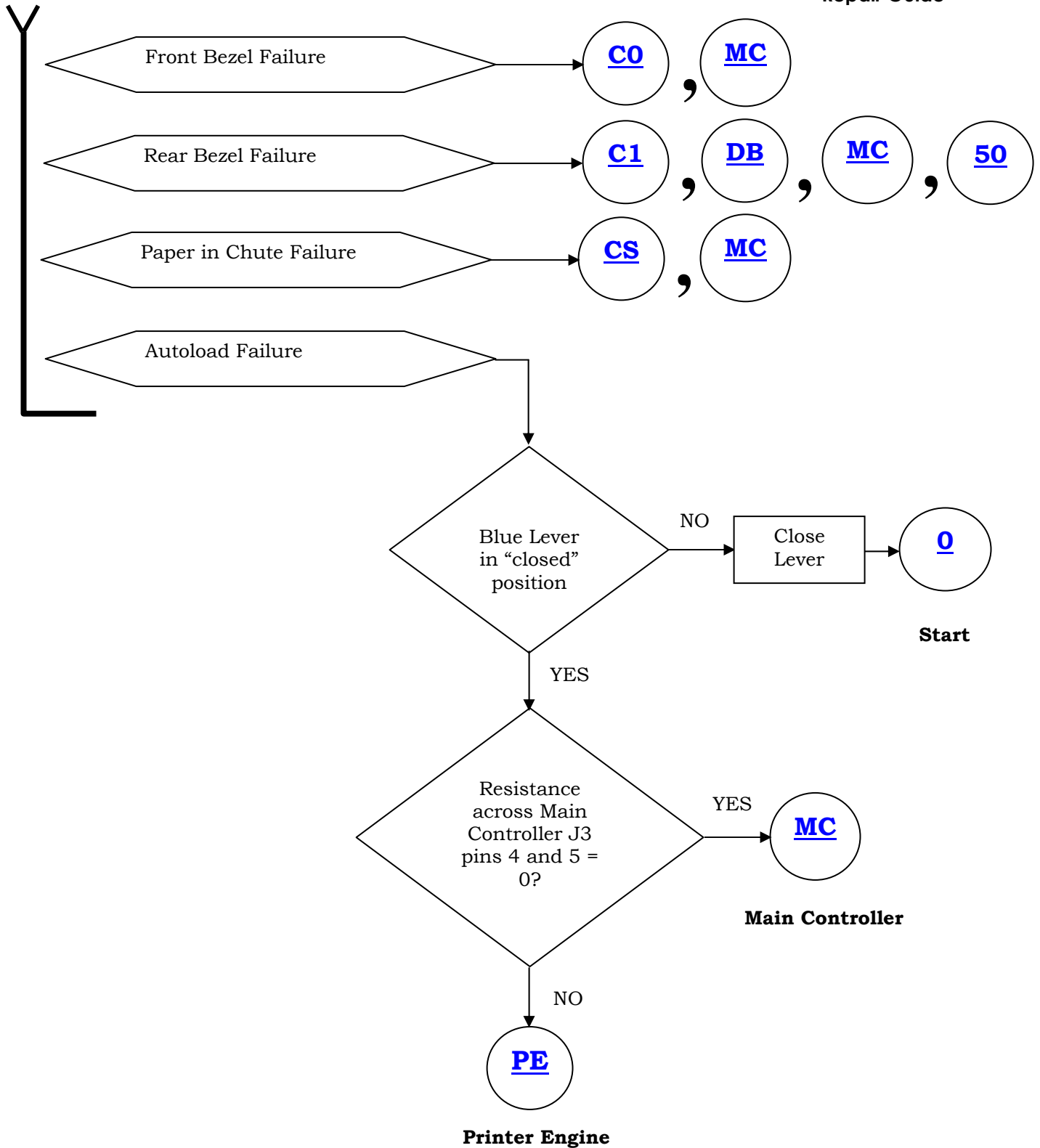
0

50 50 Pin Cable



0







FutureLogic, Inc.
425 East Colorado Street • Suite 100
Glendale, CA 91205 USA
Phone 818.244.4700 • Fax 818.244.4764
www.futurelogic-inc.com