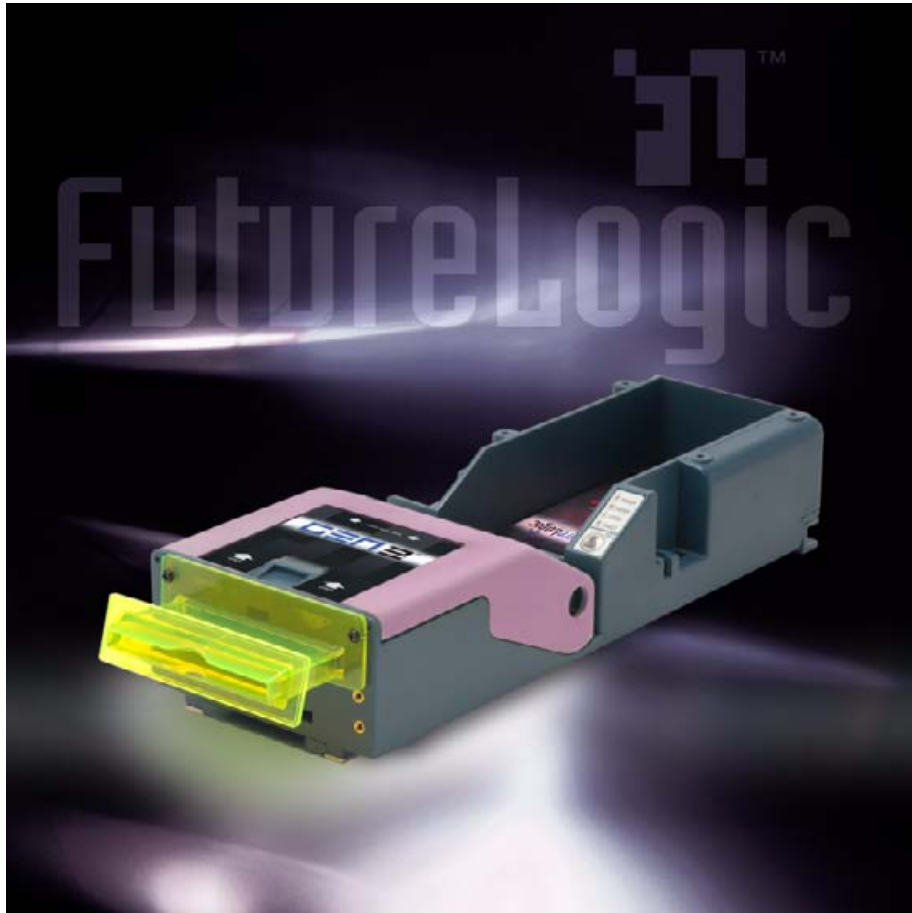


Firmware Download Utility Instructions

GEN2 PSA-66-ST2 Printer



PSA-66-ST2R (RS232 Interface)
PSA-66-ST2N (Netplex Interface)

Firmware Download Utility Instructions

GEN2 PSA-66-ST2 Printer

© 2004 – 2005 FutureLogic, Incorporated. All Rights Reserved.

GEN2 Powered by FutureLogic, the GEN2 logo, and the FutureLogic logo are trademarks of FutureLogic, Incorporated in the United States and/or other countries.

Netplex is a proprietary hardware interface and protocol of International Game Technology Corporation.

All other trademarks and products or brand names mentioned herein are the property of their respective owners.

This document contains Proprietary and Confidential information and its contents are covered by Non-Disclosure Agreement.

Technical information in this manual is disclosed for informational purposes only. No grant of license or use rights of any such information is made by publication or distribution of this manual.

These specifications are subject to change without notice and may not completely and correctly document the operation of this product.

05/04/2005

PUBN-000027

REV.B



The PSA-66-ST2 printer described in this manual is in compliance with all applied CE standards.



Table of Contents

1	Changing Firmware on One or More Printers	1
1.1	Accessing the Printer From Within a Machine	1
1.2	Using the Download Utility.....	2
1.2.1	Version Control and Verification	6



1 Changing Firmware on One or More Printers

In recognition of the need for multiple versions of firmware both for different gaming applications and normal enhancements, FutureLogic, Inc. has developed a Download Utility to provide a secure yet simple means to reload printer firmware.

This publication describes how to re-flash the printer firmware using the FutureLogic, Inc. Download Utility. Use this software to change the printer firmware on one or multiple printers connected using different communication ports.

1.1 Accessing the Printer From Within a Machine



Note: Skip this section if the printer is not already in a machine.

To access the printer from within a machine:

1. Disconnect the power.
2. Disconnect the coil cable connector.



CAUTION! The cable is under tension.



Figure 1-1 Disconnect the Cable

3. Pull the printer out of the game until it locks.



Figure 1-2 Slide the Unit until It Locks

1.2 Using the Download Utility

Verify that you have installed the FutureLogic, Inc. Download Utility. You can acquire this software from the FutureLogic, Inc. Web site (<http://www.futurelogic-inc.com>) or CD-ROM.



Note: The main window of the Download Utility displays a tab marked Auto Download. Additional tabs for each communications port you select on the Auto Download Preferences dialog display as well.

When the Download Utility detects a printer connected to a communications port, the tab for that port displays "Printer Found." If not printer is detected, the tab for that port displays "??No Printer??".

To change the firmware on the GEN2 printer:

1. Access the Download Utility.

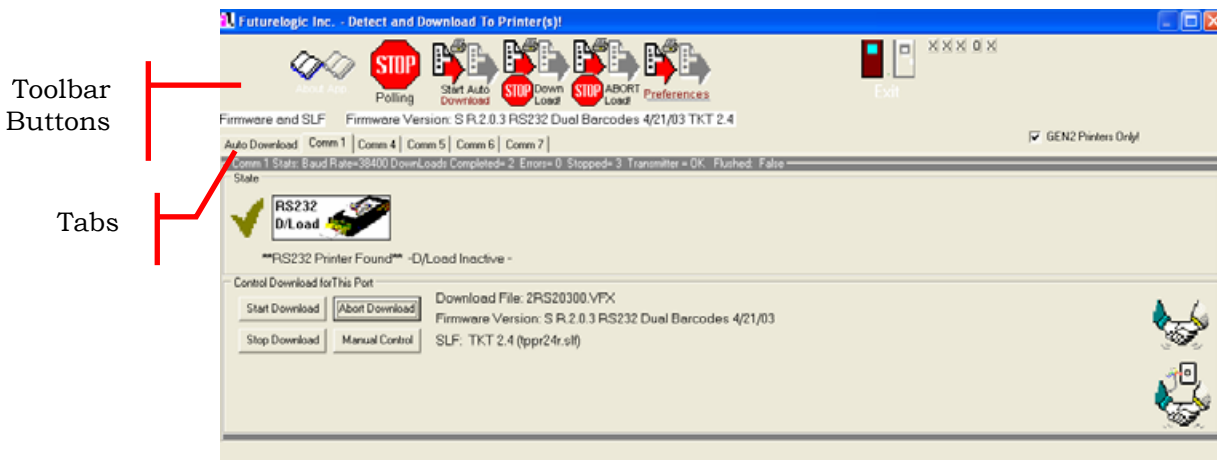


Figure 1-3 Download Utility – Main Window

- Click the **Abort Load** or **Stop Download** toolbar button to verify that the download process is NOT active.



Figure 1-4 Download Utility Toolbar

- Select the **GEN2 Printers Only!** check box.
- Connect the printer using one of the following methods:
 - RS232.** Connect the printer to the PC using the FutureLogic, Inc. Evaluation Cable (Part Number 150-00044) or other approved cabling.
 - Netplex.** Connect using the Convert Box and Power Supply.
- Power up the printer.
- (Optional) Set up your preferences if using the Download Utility for the first time.
 - Click the **Preferences** toolbar button.

The Auto Download Preferences dialog displays.

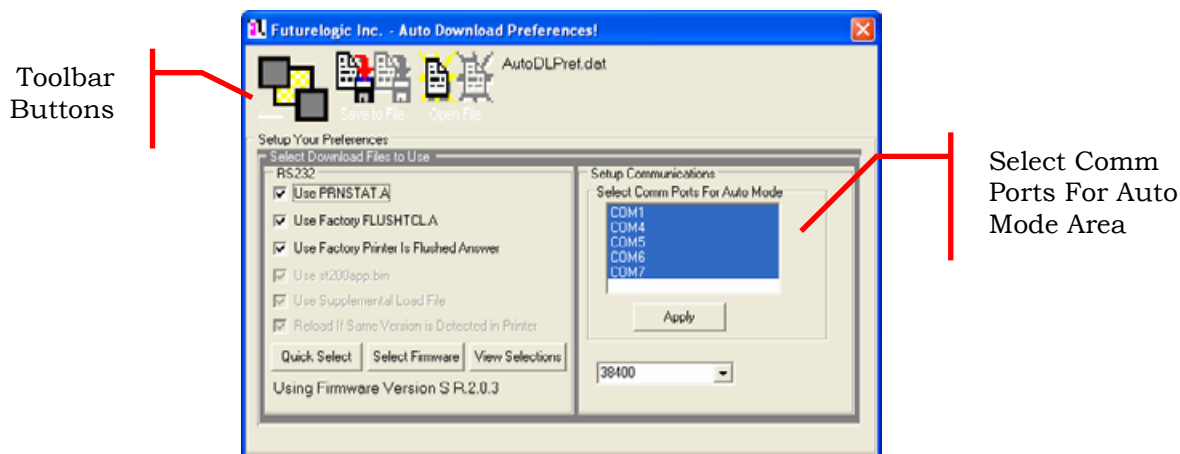


Figure 1-5 Auto Download Preferences Dialog

- Select the communications port to which the printer is connected in the Select Comm Ports for Auto Mode area.
- Click the **Apply** button.
- Click the **Select Firmware** button to set up the firmware.



Note: The firmware file (.VFX) must be located in the same folder as the Download Utility.

- Select the firmware file and click the **Open** button.

The Auto Download Preferences dialog updates to display the version number of the selected firmware file.

- f. Click the **Save Preferences** toolbar button to save these preferences and use them each time you access the Download Utility.



Note: If you move your Download Utility files to another computer, double-check your preferences settings on the new computer as they may no longer apply.

- g. Click the **Back to Prior** toolbar button to return to the main window of the Download Utility.

The main window refreshes to display the download file name, firmware version, and (optionally) the ticket template(s).



Tip: To view the selections for the printer, click the **View Selections** button.

7. After the printer powers up, the image(s) on the screen will change to indicate that the printer was detected.

If the printer is detected, click the **Start Download** button.

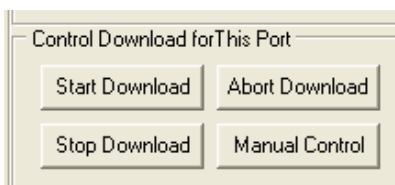


Figure 1-6 Download Utility – Control Download for This Port Commands

The process will continue automatically through completion.

The State area of the main window updates to display the status of the download in progress.

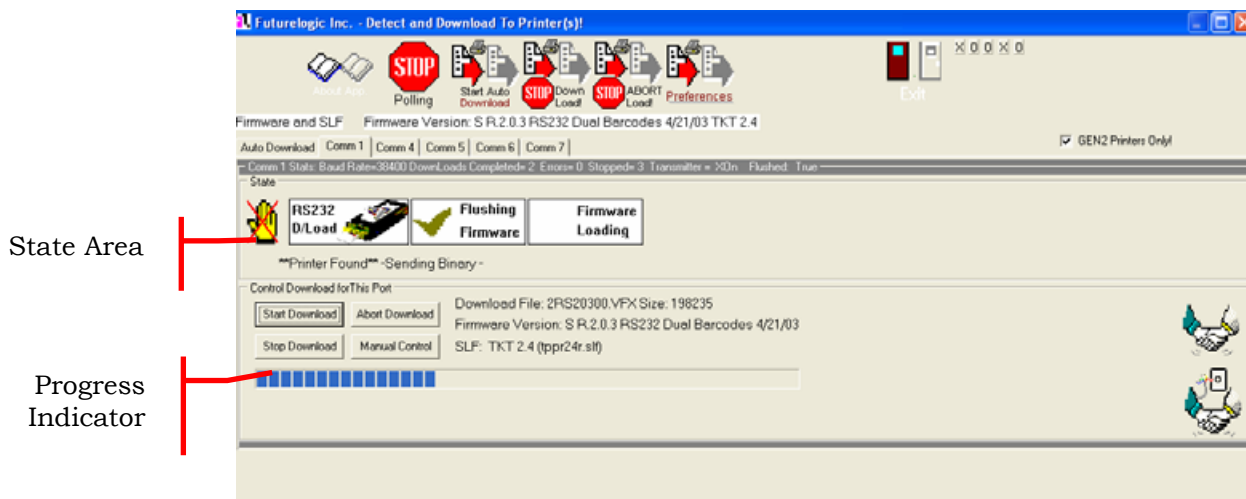


Figure 1-7 Download Utility – Main Window



CAUTION: Do NOT power down the printer or disconnect the RS232 cable from the PC during this process! Doing so MAY result in an unusable printer that is flushed and will not communicate!

After the printer downloading is complete, the printer prints a ticket showing the firmware version and ticket package. Compare the firmware version with the version displayed on the screen. If the version numbers match, the download was successful.

8. Click the **Abort Download** button.
9. (Optional) Click anywhere in the State area of the main window to view the status of the printer download.

The Printer Status Dialog displays.

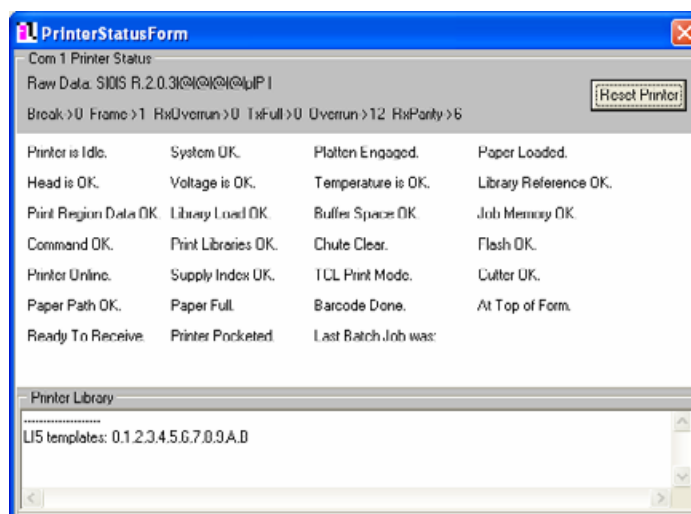


Figure 1-8 Printer Status Dialog

10. Power down the printer.
11. Double-check the results by printing a self test ticket.
 - a. Press and hold the FEED button while powering up the printer.
 - b. Continue to hold the FEED button until the ticket starts to print, then release.

This self test ticket will show the firmware version that is loaded. Double-check this against the version printed on the prior test ticket (step 9). Also, check the library inventory. There should be entries for Templates, Print Regions, and System Resources.

The self test ticket contains information similar to the following:

Model:	PSA-66-xxxx
Firmware:	STPV2.1.1 TKT-2.3
COMMUNICATION	
Interface:	Serial
Baud Rate	19,200
Data Bits:	8
Parity:	NONE
Handshaking:	XON/OFF+HARDWARE
PRINT CONTROL:	
Darkness Control:	+00%
Black Bar Index:	Enabled
Print On Demand:	Disabled
Auto Sleep Timer:	Off
SYSTEM RESOURCES	
Templates:	1,2,3,4,5,6,7,8,9,A,B
Print Regions:	1,2,3,4,5,6,7,8,h,9,A,B C,D,E,F,G,I,J,K,L,N,O,P Q,R,S,T,U,Z,X,a,b,c,d,e, f,g,i,j,k,l,m,n,o,p,q
Graphics:	
Fonts:	3(0), 1(0), 2(0), 4(0) 7(0), 8(0), 5(0)

Figure 1-9 Sample Self Test Ticket



Note: The download process will not complete if any of these steps are not successful. The result of a failed download process will be a printer with its memory flushed or otherwise unable to boot successfully. Specifically, the printer will not be capable of printing. If this occurs, repeat these steps. If not successful, follow your RMA procedure for this printer.

12. Remove this printer.

13. Go back to step 2 and repeat this process until all printers have been loaded.

1.2.1 Version Control and Verification

The firmware version number will be printed on the ticket after the download is complete. Verify that this matches the firmware version displayed on the screen.



FutureLogic, Inc.
425 East Colorado Street • Suite 100
Glendale, CA 91205 USA
Phone 818.244.4700 • Fax 818.244.4764
www.futurelogic-inc.com