

SR3 Modification Manual



This document is the copyright of Money Controls Ltd and may not be reproduced in part or in total by any means, electronic or otherwise, without the written permission of Money Controls Ltd. Money Controls Ltd does not accept liability for any errors or omissions contained within this document. Money Controls Ltd shall not incur any penalties arising out of the adherence to, interpretation of, or reliance on, this standard. Money Controls Ltd will provide full support for this product when used as described within this document. Use in applications not covered or outside the scope of this document may not be supported. Money Controls Ltd. reserves the right to amend, improve or change the product referred to within this document or the document itself at any time.

Contents

1. Divider plate /cotton catch replacement (PMC/629).....	3
1.1 Tools required.....	3
1.2 Removing the solenoid	3
1.3 Removing the Divider plate.....	4
1.4 Replacing with the new Divider plate	5
2. Reject Lever Replacement (PBL/1365).....	6
2.1 Removal of Reject Lever	6
2.2 Replacement of Reject Lever	7
3. SR3 Stabiliser ball replacement (BAL/006).....	8
3.1 Tools required.....	8
3.2 Locating the accept gate cover screw.....	8
3.3 Replacing the balls	9
3.4 Re-assemble	9
3.5 Re-Program	9

Figures

Fig. 1 Cable cover removal.....	3
Fig. 2 Solenoid Removal	3
Fig. 3 Solenoid Removal (2)	3
Fig. 4 Divider plate release.....	4
Fig. 5 Cutting the divider plate	4
Fig. 6 Locating the cable cut out.....	5
Fig. 7 Replacing the solenoid	5
Fig. 8 Replacing the cable cover	5
Fig. 9 Locating the reject lever screw	6
Fig. 10 Removing the reject lever spring	6
Fig. 11 Remove the reject lever arm.....	6
Fig. 12 Reject lever spring position.....	7
Fig. 13 Reject lever spring insertion	7
Fig. 14 Rotation to refit the arm	7
Fig. 15 Locate screw	8
Fig. 16 Remove screw (2).....	8
Fig. 17 Removed gate	8
Fig. 18 Plastic Ball.....	8
Fig. 19 Ball insertion	9
Fig. 20 Both balls fitted	9
Fig. 21 Re-assemble	9

1. Divider plate /cotton catch replacement (PMC/629)

Ensure PBL/1192 is at REV 5.

1.1 Tools required

- Phillips screwdriver
- Flat head screwdriver
- Wire cutters
- Replacement Divider plate
- Replacement Cotton catch

1.2 Removing the solenoid

Locate the solenoid below the accept gate, and remove the fixing screw and the remove the cable cover (Fig 1)

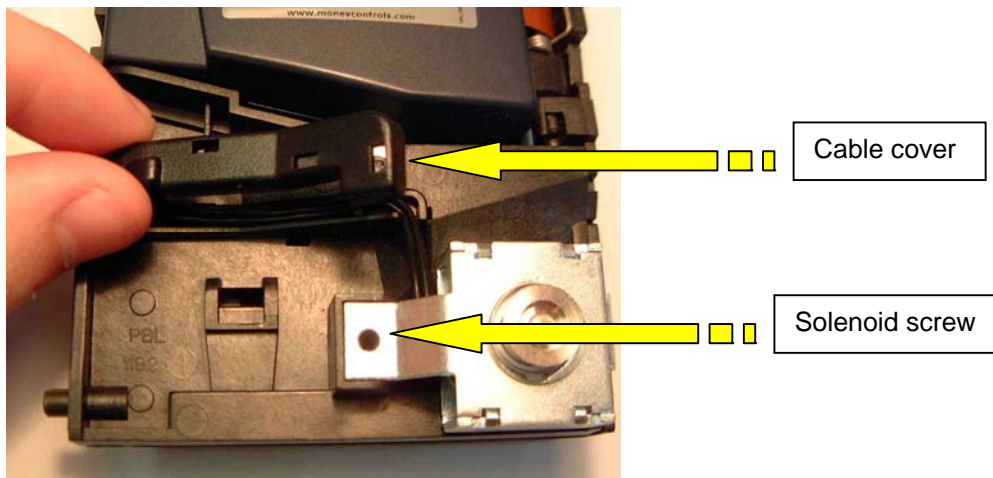


Fig. 1 Cable cover removal

Remove the solenoid and place to one side (Fig 2 & Fig 3)

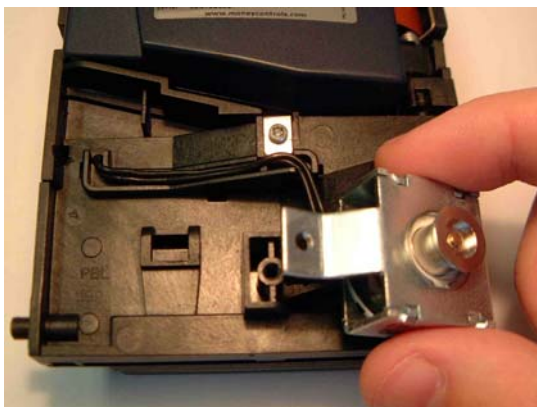


Fig. 2 Solenoid Removal

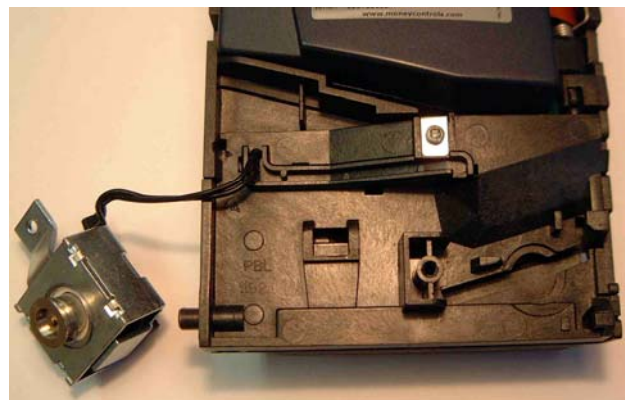


Fig. 3 Solenoid Removal (2)

1.3 Removing the Divider plate

Gently prize one side of the divider plate and lift to remove, be careful not to break the solenoid cables (Fig 4).

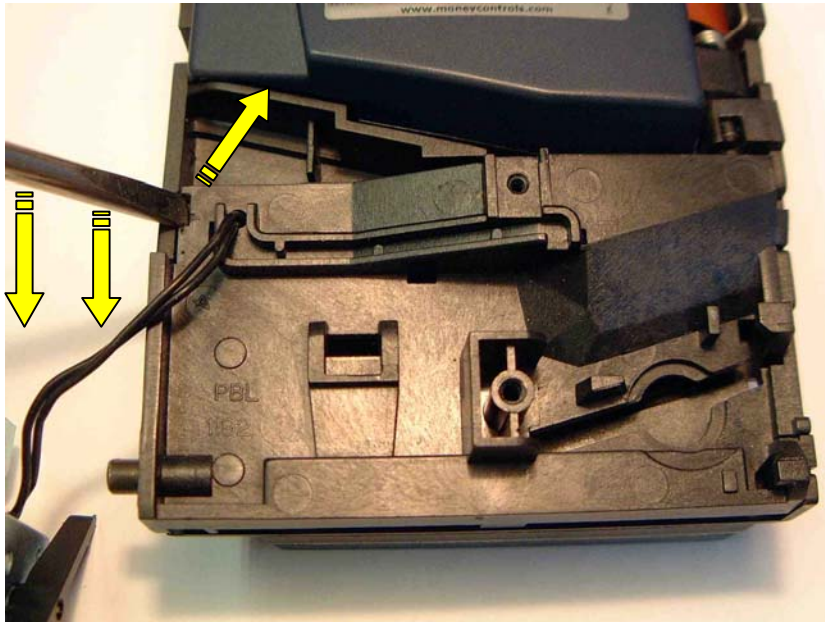


Fig. 4 Divider plate release

Carefully cut the divider plate next to the solenoid cables using the wire cutters to release them, ensuring that you do not cut the cables (Fig 5).

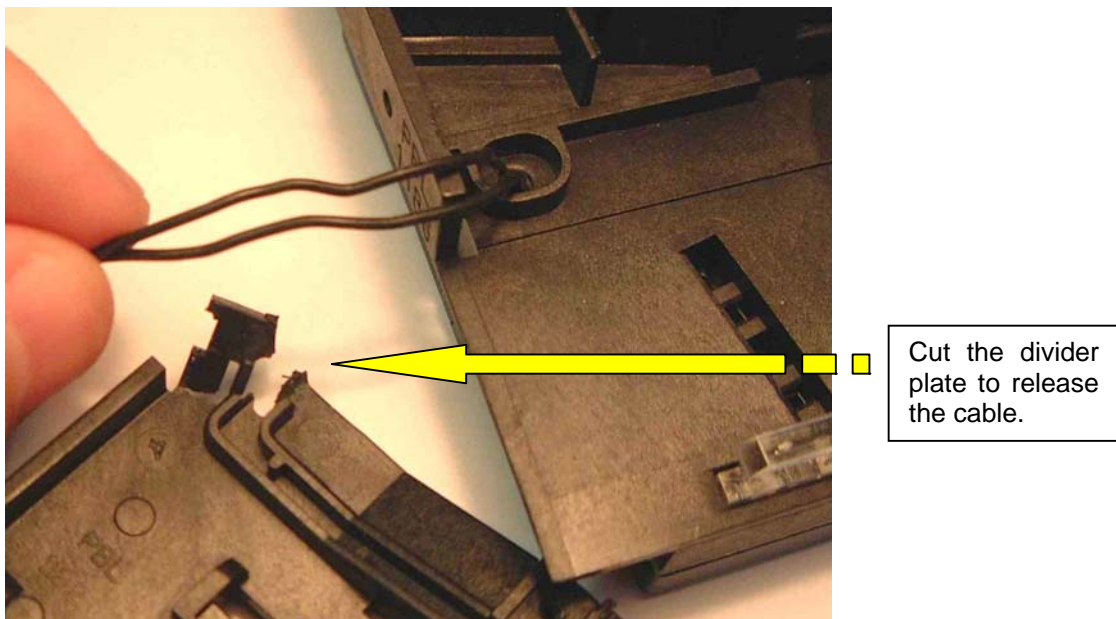
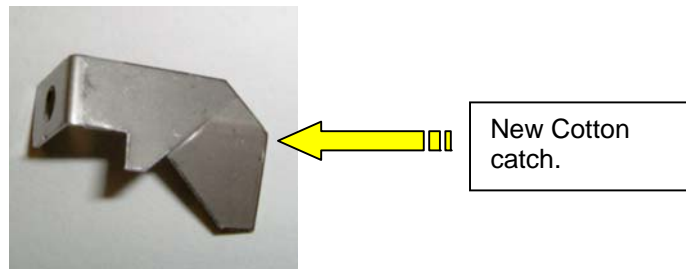


Fig. 5 Cutting the divider plate

1.4 Replacing with the new Divider plate

PRIOR TO REPLACING THE DIVIDER PLATE, ENSURE THE NEW COTTON CATCH MEJ / 096 HAS BEEN FITTED.



Insert the solenoid cables into the divider plate cut out, push the divider plate into position (Fig 6).

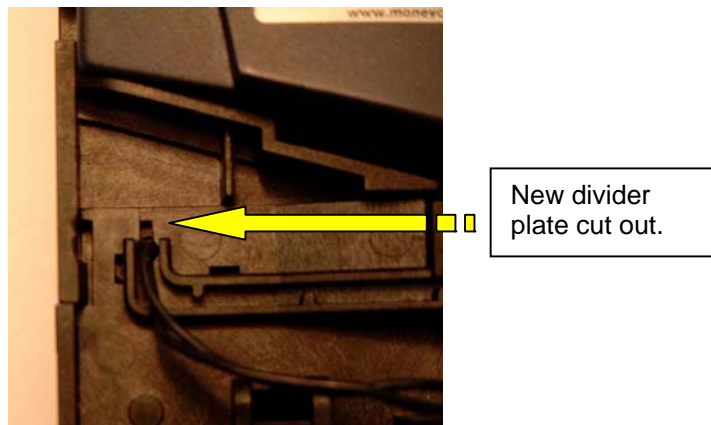


Fig. 6 Locating the cable cut out

Place the solenoid back into its locating position and secure with the screw (Fig 7).
Replace the cable cover (Fig 8).

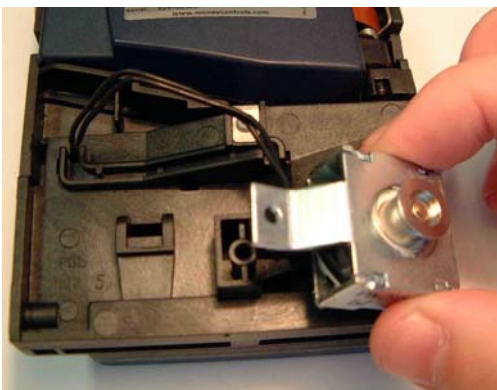


Fig. 7 Replacing the solenoid

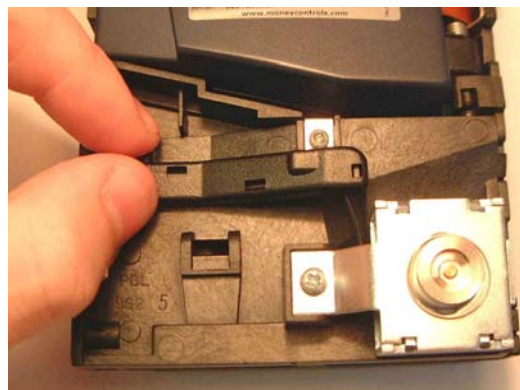


Fig. 8 Replacing the cable cover

2. Reject Lever Replacement (PBL/1365)

PLEASE ENSURE PBL/1365 is at REV 4.

2.1 Removal of Reject Lever

Remove the reject lever screw using a Philips screwdriver (Fig 9).

Remove the reject lever spring using a flat head screwdriver as in Fig 10.



Fig. 9 Locating the reject lever screw

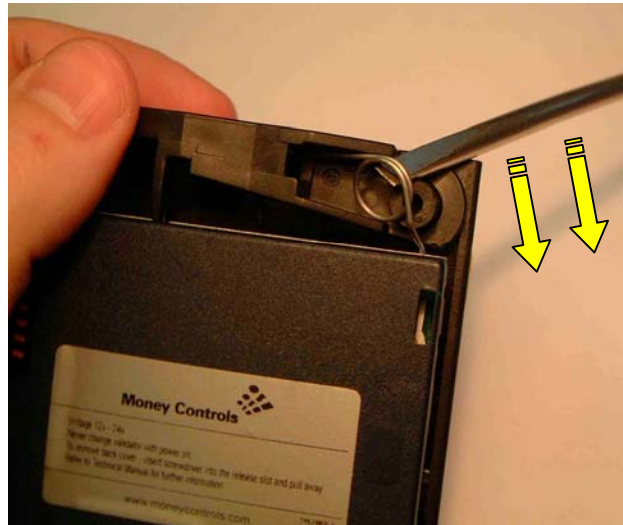


Fig. 10 Removing the reject lever spring

To remove the reject levers arm, push to the right and roll upward (Fig 11).

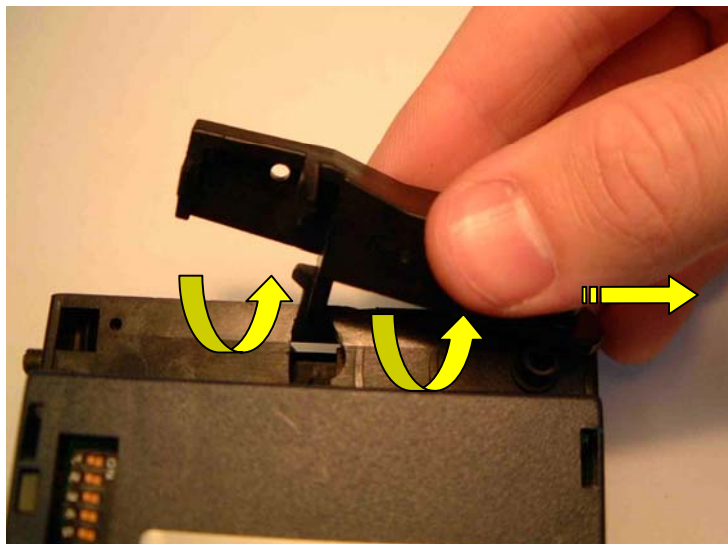


Fig. 11 Remove the reject lever arm

CONFIDENTIAL

Not to be disclosed without prior written permission from Money Controls

Page 6 of 9

2.2 Replacement of Reject Lever

To replace the reject lever, place the spring onto the new reject lever ensuring that the shortest part of the spring is pointing downwards as in Fig 12.

Insert the short arm of the spring into the gap at the top right of the SR3 (Fig 13).

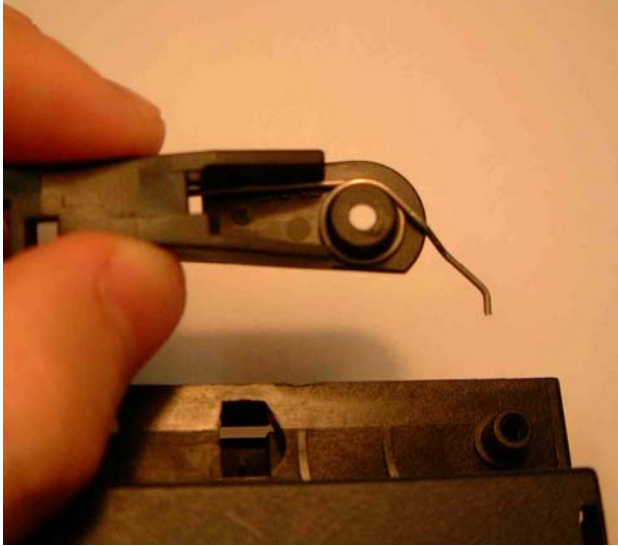


Fig. 12 Reject lever spring position

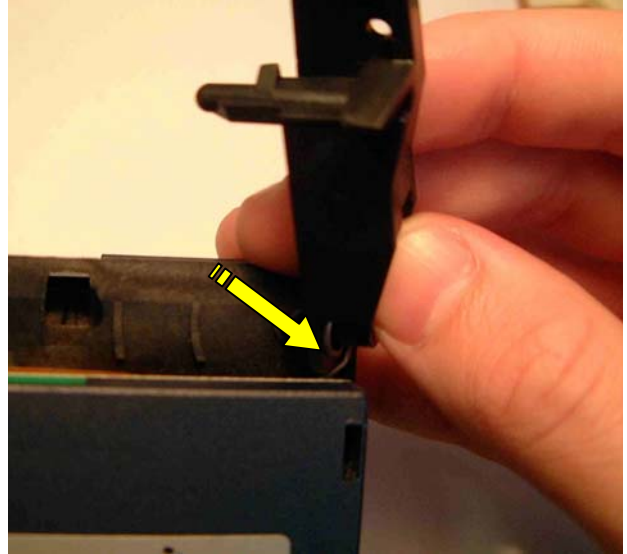


Fig. 13 Reject lever spring insertion

Refitting of the reject lever arm is the reverse of removal (Fig 14)
Once the reject lever is located, replace the screw to secure.



Fig. 14 Rotation to refit the arm

3. SR3 Stabiliser ball replacement (BAL/006)

3.1 Tools required

- Phillips screwdriver
- Replacement plastic ball.

3.2 Locating the accept gate cover screw

Locate the screw by opening the accept gate of the SR3 so that you can hold it with one hand. (See *fig. 15*) Using a Philips screwdriver, remove the screw (See *fig. 16*)

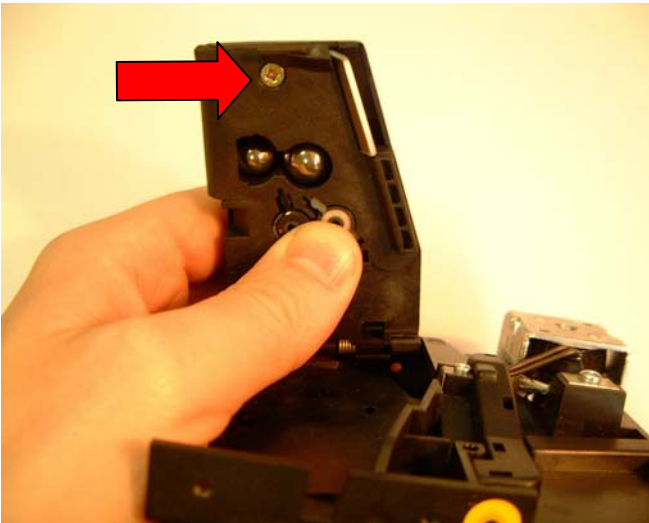


Fig. 15 Locate screw



Fig. 16 Remove screw (2)

Once the screw is removed, open the gate cover and remove the steel ball, if there are 2 balls remove them both (*fig. 17*)



Fig. 17 Removed gate



Fig. 18 Plastic Ball

3.3 Replacing the balls

Insert the plastic balls into the holes (See fig. 19 & 20)

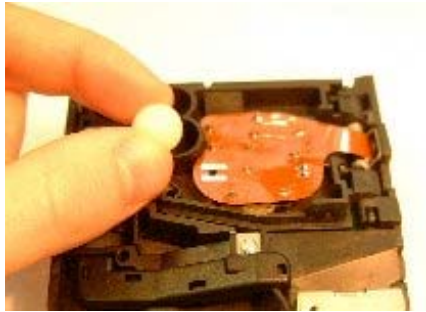


Fig. 19 Ball insertion



Fig. 20 Both balls fitted

3.4 Re-assemble

Replace the screw to complete the change.



Fig. 21 Re-assemble

3.5 Re-Program

Finally, program the unit with the latest coin specification.