

WMS Paytrak Conversion Manual for GP205Dxx



This document is the copyright of Money Controls Ltd and may not be reproduced in part or in total by any means, electronic or otherwise, without the written permission of Money Controls Ltd. Money Controls Ltd does not accept liability for any errors or omissions contained within this document. Money Controls Ltd shall not incur any penalties arising out of the adherence to, interpretation of, or reliance on, this standard. Money Controls Ltd will provide full support for this product when used as described within this document. Use in applications not covered or outside the scope of this document may not be supported. Money Controls Ltd. reserves the right to amend, improve or change the product referred to within this document or the document itself at any time.

Contents

1. Diary of changes.....	3
2. Introduction.....	4
3. Equipment.....	4
4. Conversion – Strip down	5
5. Conversion – Re-build.....	6
6. Setting the “Dog Point”.....	7
7. Exploded Drawings	8
8. Gamesman and Paytrak Build Numbers and coin range	12

Figures

Figure 1: Exploded Drawing – Bowl and disk assembly	8
Figure 2: Exploded Drawing – Motor, frame base assembly and Paytrak	9

Tables

Table 1: Exploded diagram parts list and description	10
Table 2: Build Numbers - Range of Coin Diameters	12
Table 3: Build Numbers - Range of Coin Thickness	12
Table 4: Build Conversion 1	13
Table 5: Build Conversion 2	14
Table 6: Build Conversion 3	15
Table 7: Build Conversion 4	16
Table 8: Build Conversion 5	17
Table 9: Build Conversion 6	18
Table 10: Build Conversion 7.....	19
Table 11: Build Conversion 8.....	20
Table 12: Build Conversion 9.....	21
Table 13: Build Conversion 10.....	22
Table 14: Build Conversion 11.....	23
Table 15: Build Conversion 12.....	24
Table 16: Build Conversion 13.....	25

1. Diary of changes

Issue 1.0 - First issue	5th January 2005
Issue 1.1	20 th May 2005
➤ Added Table 14 and Table 15 (Build 6C & D).	
➤ Added Table 16 (Build 9B).	
Issue 1.2	31 st May 2005
➤ Corrected part numbers in Table 15 and Table 16	
Issue 1.3	19 th August 2005
➤ Corrected part numbers in Table 14 and Table 15	
Issue 1.4	26 th August 2005
➤ Added Table 2 and Table 3 .	

2. Introduction

This manual has been compiled to enable Games Manufacturers, Casinos and Service Centres to convert a Money Controls Paytrak Hopper from one denomination to another.

A reference chart has been compiled and can be found at the back of this manual, see [Table 4](#) to [Table 13](#).

The conversion kit will be packed individually. In each package will be found a checklist of parts that are in the kit. The kit should be checked against the checklist before starting a hopper conversion.

3. Equipment

The following equipment will be required:-

1. Torque driver set at 4.0Nm [2.95 ft-lbs.] and fitted with a No3 Pozi head screw bit.
2. Torque driver set at 4.0Nm [2.95 ft-lbs.] and fitted with a No2 Pozi head screw bit.
3. Torque driver set at 4.0Nm [2.95 ft-lbs.] and fitted with a 10mm A/F “Across Flats” socket.
4. 3mm Allen Key.
5. 4mm Allen Key.
6. 10mm A/F “Across Flats” open-end spanner / wrench.

Note: - Tools not supplied by Money Controls.

4. Conversion – Strip down

[Refer to [Figure 1](#) and Exploded Diagrams Pages [8](#) and [8](#)]

1. Disconnect the opto loom from the control board.
2. Disconnect the motor loom [Item 50].
3. Disconnect the level sense wires [Item 51] from the bowl.
4. Using a cross head screwdriver, remove the top M6 x 20 screw and spacer 1 [Items 37/38] and the M6 x 35 screw and spacer 2 [Items 39/40] with the coloured spacers, [Item 42]. The bowl can then be lifted off the bottom two M6 x 25 shoulder screws. Remove the two M6 x 20 Pozi Pan head screws [Item 54] holding the regulator [Item 57] and the handle [Item 53] to the bowl unit.
5. Using a 4mm allen key remove the bottom right hand M6 x 25 shoulder screw, [Item 41] and colour spacer/s, [Item 42].
6. Remove the M6 x 30 Pozi Pan head screw, and Nylok nut [Items 43/44]. Pull the spring loaded catch, situated at the bottom of the Tower [Item 59], out. At the same time lift the tower vertically clear of the Housing unit [Item 8].
7. Remove the top right hand M6 x 20 Pozi Pan head screw and shakeproof washer [Item 29 & 45].
8. Remove the bottom left hand M6 x 40 Pozi pan head screw and shakeproof washer [Item 28 & 45]. The wiper [Item 22] can now be removed.
9. Remove the M6 x 35 Pozi pan head screw [Item 31] and then remove the bottom spacer [Item 26].
10. Remove the 2 off M6 x 20 Pozi pan head screws and shakeproof washers [Item 29/45]. The Twister cover [Item 11] The Claw [Item 12] and the Claw Spacer [Item 13] can now be removed.
11. Take hold of the motor to keep it in position. Then remove the two M6 x 16 Pozi countersunk Anu-lok screws, [Item 33], from the centre of the disc unit, [Item 32]. With the two screws removed the drive assembly, spring, rotary bearing and disc unit can be removed, [Items 32, 34, 35 & 36].
12. Remove the M6 x 20 Pozi countersunk screw, nut and shakeproof washer, [Items 21, 45 & 46], then remove the wiper spacer, [Item 20].
13. (See note 1) Remove the three M4 Pozi pan screws, 4mm plain washer and the 4mm-shakeproof washer, [Items 17, 18 & 19], holding the horseshoe, [Item 16], to the housing [Item 8].

Note 1: - Hopper build No8 is not fitted with a Horseshoe.

5. Conversion – Re-build

1. Place horseshoe, [Item 16], in the housing, [Item 8] and line up the holes in the housing with the 3 x M4 tapped holes in the horseshoe. Fix the horseshoe in place with the M4 screw, 4mm plain washer and the 4mm-shakeproof washer, [Items 17, 18 & 19].
2. Take the wiper spacer, [Item 20], from the kit and with the M6 x 20 Pozi countersunk screw, shakeproof washer and nut [Item 21, 45 & 46] fit the wiper to the housing, [Item 8]. At this stage leave the screw only hand tight so the wiper, [Item 22], can be easily fitted.
3. Take the rotary bearing, spring and drive assembly previously removed [Items 34, 35 & 36] and locate the pin on the rotary bearing into the small hole in the housing. With the spring mounted on to the drive bush, locate the drive assembly into the rotary bearing.
4. Holding the drive assembly in place, place the disc unit, [Item 32], from the kit onto the locating pip on the end of the drive bush. Using the two M6 x 16 Pozi countersunk Anu-lok screws, [Item 33], from the kit, fix the disc to the drive bush.
5. Take the Claw spacer, the Claw [Item 13 & 12] from the kit and the twister cover [Item 11,] previously removed and fix to the housing with the two M6 x 20 Pozi pan head screws and shakeproof washers.[Item 29 & 45]

**Note: - a) The claw spacer is placed between the housing [Item 8] and the claw [Item 7]
b) The claw [Item 12] is fixed to the housing with the small leg facing into the housing.**

6. Take the bottom spacer [Item 26] from the kit and fix to the housing with a M6 x 35 Pozi pan head screw [Item 31] in the left hand side mounting hole.
7. Take the wiper [Item 22], from the kit. Position the wiper on the housing so that the two 6.2mm mounting holes line up one with the mounting holes in the housing and the second hole with the fixing hole in the bottom spacer [Item 26]. Fix the wiper to the housing using the M6 x 20 Pozi pan head screw, and shakeproof washer, [Item 29 & 45], in the top right hand hole. In the bottom left hand fixing hole, ^(See Note 2) fit the M6 x 40 Pozi pan head screw, and shakeproof washer [Items 28, & 45]. Take the M6 dog point socket, nut and shakeproof washer [Item 23, 24 & 25]. Screw the dog point into the tapped hole in the wiper [Item 22] and then place the shakeproof washer on to the dog point then screw the M6 nut onto the dog point. [See setting the dog point section 6].
8. Take the tower unit [Item 59] from the kit. Pull the spring loaded catch, situated at the bottom of the Tower [Item 59], out. At the same time lower the tower onto Housing unit [Item 8] until the catch locates in the bottom fixing hole. Fit the M6 x 30 pozi pan head screw [Item 43] into the top fixing hole in the housing through the top hole on the tower. Fit the M6 Nylok nut [Item 44] to the screw to secure tower in place.

Note 2: - If converting to a Build No6, No7, or No8 then the M6 x 35 Pozi countersunk screw [Item 49] and filler piece extension [Item 48] is fitted at this point to the filler piece [Item 14].

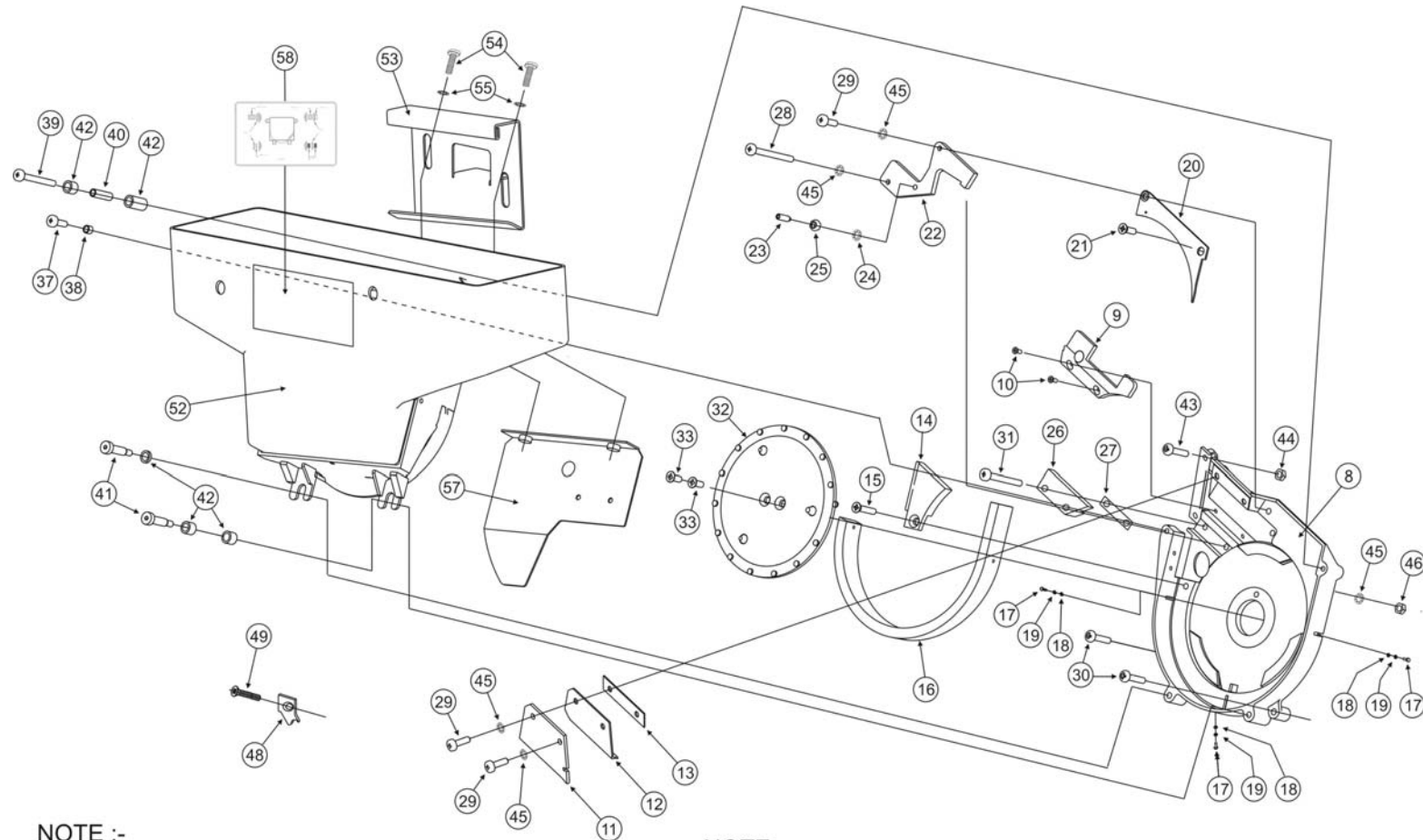
9. All the M6 Pozi head screws should now be tightened to 4Nm [2.95 ft-lbs.].
10. Set the “Dog Point” – (See [Setting the “Dog Point”](#) section 6).
11. Fit the regulator [Item 57] to the bowl unit [Item 1] and the handle [Item 53] with the two M6 x 20 Pozi Pan screws and washers [Item 54 and 55].
12. Attach the Yoke Colour Spacers Label [Item 58] to the bowl unit [Item 52].
13. Fit the bottom right hand shoulder screw, [Item 41] and colour spacer/s, [Item 42], to the housing.
[Refer to the chart with the kit for the correct spacers for the denomination required].
14. Fit Bowl Unit [Item 52] and secure in place with the M6 x 35 Pozi pan screws, [Item 39], the Spacer 2 [Item 40] and colour spacers, [Items 42].
[Refer to chart with the kit for correct spacers for the denomination].
15. Reconnect level sense wires to bowl.
16. Reconnect the main harness and the motor harness to the control board.
17. Reconnect the plug on the Motor loom to the socket on the loom fitted to the control board.
18. Reconnect the opto loom to the control board.
19. Test the hopper.

6. Setting the “Dog Point”

1. Screw the dog point screw, [Item 23] into the M6 tapped hole in the wiper, with the dog point end towards the disc, until it is finger tight.
2. Fit the 6mm shakeproof washer, [Item 24], onto the dog point. Screw the M6 nut, [Item 25], onto the dog point screw. Secure the dog point screw to the wiper by placing the 10mm socket onto the M6 nut and tighten to 4Nm [2.95 ft-lbs.].
3. Taking the 10mm spanner / wrench and the 3mm allen key, hold the nut with the spanner / wrench and with the allen Key in the dog point, turn the dog point anti-clockwise between half and three quarters of a turn.
4. Check that the disc can turn without being obstructed by the pin.

7. Exploded Drawings

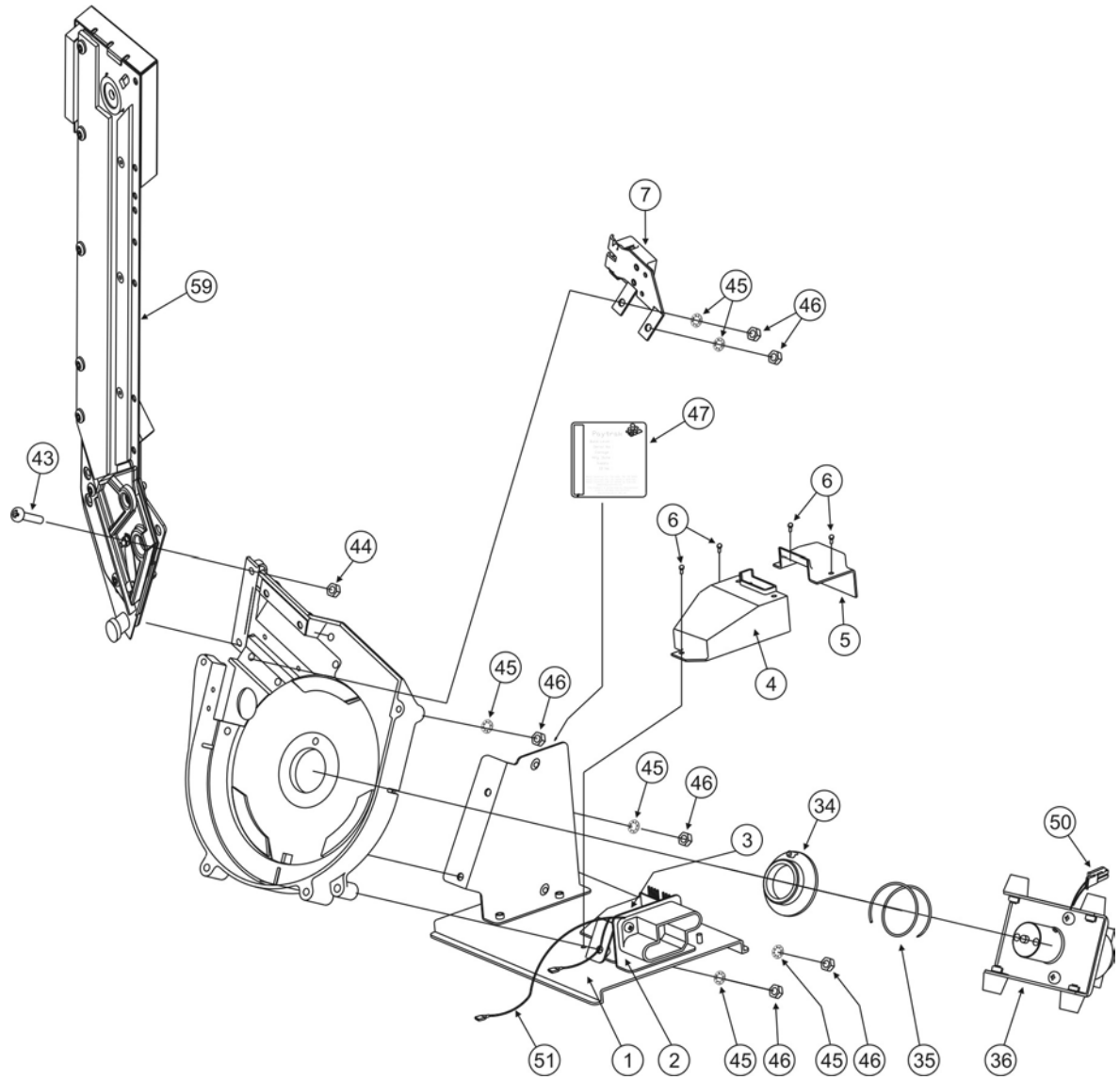
Figure 1: Exploded Drawing – Bowl and disk assembly



NOTE :-
1] ITEM 56 IS NOT SHOWN ON DRAWING

NOTE :-
1] HARNESS ITEM 2 IS NOT SHOWN.
2] HARNESS ON LATCH DETECTOR UNIT ITEM 8 IS NOT SHOWN

Figure 2: Exploded Drawing – Motor, frame base assembly and Paytrak



*Table 1: Exploded diagram parts list and description***Part List ref. TSP0xx**

Item No	Description	Spares Part Number
1	Base Unit	SGPGMGXX00276
2	Harness 10	SGPGMGXX00277
3	Control Board	GP2SPSXX00031
4	PCB Cover	SGPGMGXX00279
5	Splash Cover	SGPGMGXX00147
6	Plastic Rivet	SGPGMGXX00004
7	Latch Detector Unit	GP2SPSXX00035
8	Housing Unit	SGPGMGXX00283
9	Twister Unit	SGPGMGXX00280
10	M4 x 12 CSK poz screw	SGPGMGXX00281
11	Twister Cover	SGPGMGXX00193
12	Claw	Coin/Token Dependent – See Conversion Kit.
13	Claw Spacer	Coin/Token Dependent – See Conversion Kit.
14	Filler Piece	SGPGMGXX00194
15	M6 x 30 CSK poz screw	SGPGMGXX00282
16	Horseshoe	Coin/Token Dependent – See Conversion Kit.
17	M4 x 10 poz pan screw	SGPGMGXX00197
18	4mm Plain Washer	SGPGMGXX00198
19	4mm S/P Washer	SGPGMGXX00199
20	Wiper Spacer	Coin/Token Dependent – See Conversion Kit.
21	M6 x 20 CSK poz pan screw	SGPGMGXX00208
22	Wiper	Coin/Token Dependent – See Conversion Kit.
23	M6 x 16 Dog Point Socket	SGPGMGXX00192
24	6mm S/P Washer	SGPGMGXX00185
25	M6 Nut	SGPGMGXX00184
26	Bottom Spacer	Coin/Token Dependent – See Conversion Kit.
27	Bottom Spacer Packer	Coin/Token Dependent – See Conversion Kit.
28	M6 x 40 poz pan screw	SGPGMGXX00284
29	M6 x 20 poz pan screw	SGPGMGXX00191
30	M6 x 30 poz pan screw	SGPGMGXX00187
31	M6 x 35 poz pan screw	SGPGMGXX00179
32	Disc Unit	Coin/Token Dependent – See Conversion Kit.

Item No	Description	Spares Part Number
33	M6 x 16 Anu-Lok Screw	SGPGMGXX00204
34	Rotary Bearing	SGPGMGXX00200
35	Retainer Spring	SGPGMGXX00201
36	Drive Assembly	SGPGMGXX00211
37	M6 x 20 poz pan screw	SGPGMGXX00191
38	Spacer 1	SGPGMGXX00209
39	M6 x 35 poz pan screw	SGPGMGXX00179
40	Spacer 2	SGPGMGXX00210
41	M6 x 25 Shoulder Screw	SGPGMGXX00145
42	Yoke Colour Spacers	Coin/Token Dependent – See Conversion Kit.
43	M6 x 30 poz pan screw	SGPGMGXX00187
44	M6 Nylok Nut	SGPGMGXX00285
45	6mm S/P Washer	SGPGMGXX00185
46	M6 Nut	SGPGMGXX00184
47	Hopper Label	Coin/Token Dependent
48	Filler Pieces Extension	Coin/Token Dependent
49	M6 x 35 CSK poz screw	Coin/Token Dependent
50	Motor Loom	This item is part of the Drive Assembly
51	Level Sensor Loom	This item is part of the Main Harness
52	Bowl Assembly	SGPGMGXX00291
	Bowl No 15	
	Yoke	
	5/32 CSK Pop Rivet	
53	Handle 2	SGPGMGXX00170
54	M6 x 20 Poz Pan Screw	SGPGMGXX00191
55	6mm S/P Washer	SGPGMGXX00185
56	Level Sensor Assy	SGPGMGXX00289
57	Regulator	Coin/Token Dependant – See Conversion Kit
58	Yoke Spacer Label	Coin/Token Dependant – See Conversion Kit
59	Tower	Coin/Token Dependant – See Conversion Kit

8. Gamesman and Paytrak Build Numbers and coin range

Table 2: Build Numbers - Range of Coin Diameters

Hopper Build No	Diameter Range in mm	Diameter Range in ins
No 1	20 to 22	0.7874 to 0.8661
No 2	22 to 25	0.8661 to 0.9843
No 3	25 to 28	0.9843 to 1.1024
No 4	28 to 31	1.1024 to 1.2205
No 5	31 to 34	1.2205 to 1.3386
No 6	34 to 38	1.3386 to 1.4961
No 7	38 to 42	1.4961 to 1.6535
No 8	42 to 45	1.6535 to 1.7717
No 9	18 to 20	0.7086 to 0.7874
No 10	16 to 18	0.6299 to 0.7086

Table 3: Build Numbers - Range of Coin Thickness

Coin Thickness No	Coin Thickness in mm	Coin Thickness in ins
A	1.0 to 1.5	0.0394 to 0.0591
B	1.6 to 2.0	0.0630 to 0.0787
C	2.1 to 2.5	0.0827 to 0.0984
D	2.6 to 3.0	0.1024 to 0.1181
E	3.1 to 3.5	0.1221 to 0.1378
F	3.6 to 4.0	0.1417 to 0.1575

Example showing how to determine which build a particular coin/token would fit in.

Example: **5 cent US coin.**

Diameter = 21.18

Coin thickness = 1.9

- 1] Check which number in table 1 the diameter of the coin will fit.
For the above coin = No1
- 2] Check which letter from table 2 does the thickness of the coin fit.
For the above coin = B
- 3] The Hopper Build No for the above coin = No1B
- 4] Coin will need to be checked and qualified in a hopper.

Table 4: Build Conversion 1

Conversion Kits for Paytrak Hopper for WMS						
	Build No1					
	A		3		C	
Description	Kit No P-1A		Kit No P-1B		Kit No P-1C	
Sub No	SUB/8010		SUB/8011		SUB/8012	
Configured No	GT205N1A00001		GT205N1B00001		GT205N1C00001	
Production Test Coin	1 Rouble		5c US			
	Part No	Config No	Part No	Config No	Part No	Config No
Tower	SUB/4826	SGPGMGXX00222	SUB/4258	SGPGMGXX00226	SUB/5072	SGPGMGXX00227
Wiper	MER/082	SGPGMGXX00136	MER/082	SGPGMGXX00136	MER/082	SGPGMGXX00136
Wiper Spacer [1]	MER/042	SGPGMGXX00093	MMC/095	SGPGMGXX00071	MER/043	SGPGMGXX00157
Wiper Spacer [2]	N/A		N/A		MER/043	SGPGMGXX00157
Wiper Spacer [3]	N/A		N/A		N/A	
Disc Unit	SUB/4373	SGPGMGXX00138	SUB/4373	SGPGMGXX00138	SUB/4914	SGPGMGXX00180
Claw	MER/077	GP2SPSXX00016	MER/077	GP2SPSXX00016	MER/077	GP2SPSXX00016
Claw Spacer [1]	MER/099	SGPGMGXX00221	MER/101	GP2SPSXX00014	MER/102	SGPGMGXX00228
Claw Spacer [2]	N/A		N/A		MER/099	SGPGMGXX00221
Claw Spacer [3]	N/A		N/A		N/A	
Bottom Spacer	MER/324	SGPGMGXX00223	MER/076	SGPGMGXX00137	MER/324	SGPGMGXX00223
Bottom Spacer Packer	N/A		N/A		MER/303	SGPGMGXX00229
Bottom Spacer Packer	N/A		N/A		N/A	
Bottom Spacer Packer	N/A		N/A		N/A	
Regulator	MER/057	SGPGMGXX00224	MER/057	SGPGMGXX00224	MER/057	SGPGMGXX00224
Yoke Spacer	PBL/108	SGPGMGXX00018	PBL/108	SGPGMGXX00018	PBL/108	SGPGMGXX00018
Yoke Spacer	PBL/1004	SGPGMGXX00016	PBL/1004	SGPGMGXX00016	PBL/1004	SGPGMGXX00016
Yoke Spacer	PBL/1006	SGPGMGXX00017	PBL/1006	SGPGMGXX00017	PBL/1006	SGPGMGXX00017
Yoke Spacer	PBL/1010	SGPGMGXX00019	PBL/1010	SGPGMGXX00019	PBL/1010	SGPGMGXX00019
Yoke Spacer	N/A		N/A		N/A	
Yoke Spacer Label	LAB/384	SGPGMGXX00079	LAB/384	SGPGMGXX00079	LAB/384	SGPGMGXX00079
Horseshoe	MER/021	SGPGMGXX00021	MER/021	SGPGMGXX00021	MER/021	SGPGMGXX00021
Label	TPL/033	SGPGMGXX00225	TPL/033	SGPGMGXX00225	TPL/033	SGPGMGXX00225

Table 5: Build Conversion 2

Conversion Kits for Paytrak Hopper for WMS						
	Build No1					
	D		E		F	
Description	Kit No P-1D		Kit No P-1E		Kit No P-1F	
Sub No	SUB/8013					
Configured No	GT205N1D00001					
Production Test Coin	10 Kroner Coin [Sweden]					
	Part No	Config No	Part No	Config No	Part No	Config No
Tower	SUB/5180	SGPGMGXX00230				
Wiper	MER/082	SGPGMGXX00136				
Wiper Spacer [1]	MER/042	SGPGMGXX00093				
Wiper Spacer [2]	MER/043	SGPGMGXX00157				
Wiper Spacer [3]	N/A					
Disc Unit	SUB/4914	SGPGMGXX00180				
Claw	MER/077	GP2SPSXX00016				
Claw Spacer [1]	MER/103	SGPGMGXX00231				
Claw Spacer [2]	N/A					
Claw Spacer [3]	N/A					
Bottom Spacer	MER/324	SGPGMGXX00223				
Bottom Spacer Packer	MER/303	SGPGMGXX00229				
Bottom Spacer Packer	MER/296	SGPGMGXX00232				
Bottom Spacer Packer	N/A					
Regulator	MER/057	SGPGMGXX00224				
Yoke Spacer	PBL/108	SGPGMGXX00018				
Yoke Spacer	PBL/1004	SGPGMGXX00016				
Yoke Spacer	PBL/1006	SGPGMGXX00017				
Yoke Spacer	PBL/1010	SGPGMGXX00019				
Yoke Spacer	N/A					
Yoke Spacer Label	LAB/384	SGPGMGXX00079				
Horseshoe	MER/021	SGPGMGXX00021				
Label	TPL/033	SGPGMGXX00225				

Table 6: Build Conversion 3

Conversion Kits for Paytrak Hopper for WMS						
	Build No2					
	A		B		C	
Description	Kit No P-2A		Kit No P-2B		Kit No P-2C	
Sub No	SUB/8016		SUB/8017		SUB/8018	
Configured No	GT205N2A00001		GT205N2B00001		GT205N2C00001	
Production Test Coin	25c Coin [Canada]		25c Coin [U.S]		€1 Coin [Euro]	
	Part No	Config No	Part No	Config No	Part No	Config No
Tower	SUB/4826	SGPGMGXX00222	SUB/4258	SGPGMGXX00226	SUB/5072	SGPGMGXX00227
Wiper	MER/096	SGPGMGXX00233	MER/096	SGPGMGXX00233	MER/096	SGPGMGXX00233
Wiper Spacer [1]	MER/042	SGPGMGXX00093	MMC/095	SGPGMGXX00071	MER/043	SGPGMGXX00157
Wiper Spacer [2]	N/A		N/A		MER/043	SGPGMGXX00157
Wiper Spacer [3]	N/A		N/A		N/A	
Disc Unit	SUB/2581	SGPGMGXX00011	SUB/2581	SGPGMGXX00011	SUB/2580	SGPGMGXX00041
Claw	MER/047	SGPGMGXX00234	MER/047	SGPGMGXX00234	MER/047	SGPGMGXX00234
Claw Spacer [1]	MER/099	SGPGMGXX00221	MER/100	SGPGMGXX00236	MER/102	SGPGMGXX00228
Claw Spacer [2]	N/A		N/A		MER/099	SGPGMGXX00221
Claw Spacer [3]	N/A		N/A		N/A	
Bottom Spacer	MER/316	SGPGMGXX00235	MER/020	GP2SPSXX00034	MER/316	SGPGMGXX00235
Bottom Spacer Packer	N/A		N/A		MER/303	SGPGMGXX00229
Bottom Spacer Packer	N/A		N/A		N/A	
Bottom Spacer Packer	N/A		N/A		N/A	
Regulator	MER/057	SGPGMGXX00224	MER/057	SGPGMGXX00224	MER/057	SGPGMGXX00224
Yoke Spacer	PBL/108	SGPGMGXX00018	PBL/108	SGPGMGXX00018	PBL/108	SGPGMGXX00018
Yoke Spacer	PBL/1004	SGPGMGXX00016	PBL/1004	SGPGMGXX00016	PBL/1004	SGPGMGXX00016
Yoke Spacer	PBL/1006	SGPGMGXX00017	PBL/1006	SGPGMGXX00017	PBL/1006	SGPGMGXX00017
Yoke Spacer	PBL/1010	SGPGMGXX00019	PBL/1010	SGPGMGXX00019	PBL/1010	SGPGMGXX00019
Yoke Spacer	N/A		N/A		N/A	
Yoke Spacer Label	LAB/384	SGPGMGXX00079	LAB/384	SGPGMGXX00079	LAB/384	SGPGMGXX00079
Horseshoe	MER/021	SGPGMGXX00021	MER/021	SGPGMGXX00021	MER/021	SGPGMGXX00021
Label	TPL/033	SGPGMGXX00225	TPL/033	SGPGMGXX00225	TPL/033	SGPGMGXX00225

Table 7: Build Conversion 4

Conversion Kits for Paytrak Hopper for WMS						
	Build No2					
	D		E		F	
Description	Kit No P-2D		Kit No P-2E		Kit No P-2F	
Sub No	SUB/8019		SUB/8020			
Configured No	GT205N2D00001		GT205N2E00001			
Production Test Coin	1 Ringget [Malaysia]		£1 Coin [UK]			
	Part No	Config No	Part No	Config No	Part No	Config No
Tower	SUB/5180	SGPGMGXX00230	SUB/5209	SGPGMGXX00263		
Wiper	MER/096	SGPGMGXX00233	MER/096	SGPGMGXX00233		
Wiper Spacer [1]	MER/042	SGPGMGXX00093	MER/042	SGPGMGXX00093		
Wiper Spacer [2]	MER/043	SGPGMGXX00157	MER/042	SGPGMGXX00093		
Wiper Spacer [3]	N/A					
Disc Unit	SUB/2580	SGPGMGXX00041	SUB/3444	SGPGMGXX00122		
Claw	MER/047	SGPGMGXX00234	MER/047	SGPGMGXX00234		
Claw Spacer [1]	MER/103	SGPGMGXX00231	MER/099	SGPGMGXX00221		
Claw Spacer [2]	N/A		MER/103	SGPGMGXX00231		
Claw Spacer [3]	N/A		N/A			
Bottom Spacer	MER/316	SGPGMGXX00235	MER/316	SGPGMGXX00235		
Bottom Spacer Packer	MER/303	SGPGMGXX00229	MER/303	SGPGMGXX00229		
Bottom Spacer Packer	MER/296	SGPGMGXX00232	MER/303	SGPGMGXX00229		
Bottom Spacer Packer	N/A		N/A			
Regulator	MER/057	SGPGMGXX00224	MER/057	SGPGMGXX00224		
Yoke Spacer	PBL/108	SGPGMGXX00018	PBL/108	SGPGMGXX00018		
Yoke Spacer	PBL/1004	SGPGMGXX00016	PBL/1004	SGPGMGXX00016		
Yoke Spacer	PBL/1006	SGPGMGXX00017	PBL/1006	SGPGMGXX00017		
Yoke Spacer	PBL/1010	SGPGMGXX00019	PBL/1010	SGPGMGXX00019		
Yoke Spacer	N/A		N/A			
Yoke Spacer Label	LAB/384	SGPGMGXX00079	LAB/384	SGPGMGXX00079		
Horseshoe	MER/021	SGPGMGXX00021	MER/021	SGPGMGXX00021		
Label	TPL/033	SGPGMGXX00225	TPL/033	SGPGMGXX00225		

Table 8: Build Conversion 5

Conversion Kits for Paytrak Hopper for WMS						
	Build No3					
	A		B		C	
Description	Kit No P-3A		Kit No P-3B		Kit No P-3C	
Sub No	SUB/8022		SUB/8023		SUB/8024	
Configured No	GT205N3A00001		GT205N3B00001		GT205N3C00001	
Production Test Coin	WMS Token 0.983 x 0.062				€2 Coin [Euro]	
	Part No	Config No	Part No	Config No	Part No	Config No
Tower	SUB/5179	SGPGMGXX00237	SUB/5175	SGPGMGXX00238	SUB/4744	SGPGMGXX00239
Wiper	MER/319	SGPGMGXX00240	MER/319	SGPGMGXX00240	MER/319	SGPGMGXX00240
Wiper Spacer [1]	MER/042	SGPGMGXX00093	MMC/095	SGPGMGXX00071	MER/043	SGPGMGXX00157
Wiper Spacer [2]	N/A		N/A		MER/043	SGPGMGXX00157
Wiper Spacer [3]	N/A		N/A		N/A	
Disc Unit	SUB/3119	SGPGMGXX00124	SUB/3119	SGPGMGXX00124	SUB/3121	SGPGMGXX00123
Claw	MER/047	SGPGMGXX00234	MER/047	SGPGMGXX00234	MER/047	SGPGMGXX00234
Claw Spacer [1]	MER/099	SGPGMGXX00221	MER/101	GP2SPSXX00014	MER/102	SGPGMGXX00228
Claw Spacer [2]	N/A		N/A		MER/099	
Claw Spacer [3]	N/A		N/A		N/A	
Bottom Spacer	MER/317	SGPGMGXX00241	MER/317	SGPGMGXX00241	MER/317	SGPGMGXX00241
Bottom Spacer Packer	N/A		MER/296	SGPGMGXX00232	MER/303	SGPGMGXX00229
Bottom Spacer Packer	N/A		N/A		N/A	
Bottom Spacer Packer	N/A		N/A		N/A	
Regulator	MER/057	SGPGMGXX00224	MER/057	SGPGMGXX00224	MER/057	SGPGMGXX00224
Yoke Spacer	PBL/108	SGPGMGXX00018	PBL/108	SGPGMGXX00018	PBL/108	SGPGMGXX00018
Yoke Spacer	PBL/1004	SGPGMGXX00016	PBL/1004	SGPGMGXX00016	PBL/1004	SGPGMGXX00016
Yoke Spacer	PBL/1006	SGPGMGXX00017	PBL/1006	SGPGMGXX00017	PBL/1006	SGPGMGXX00017
Yoke Spacer	PBL/1010	SGPGMGXX00019	PBL/1010	SGPGMGXX00019	PBL/1010	SGPGMGXX00019
Yoke Spacer	N/A		N/A		N/A	
Yoke Spacer Label	LAB/384	SGPGMGXX00079	LAB/384	SGPGMGXX00079	LAB/384	SGPGMGXX00079
Horseshoe	MER/021	SGPGMGXX00021	MER/021	SGPGMGXX00021	MER/021	SGPGMGXX00021
Label	TPL/033	SGPGMGXX00225	TPL/033	SGPGMGXX00225	TPL/033	SGPGMGXX00225

Table 9: Build Conversion 6

Conversion Kits for Paytrak Hopper for WMS						
	Build No3					
	D		E		F	
Description	Kit No P-3D		Kit No P-3E		Kit No P-3F	
Sub No	SUB/8025					
Configured No	GT205N3D00001					
Production Test Coin	WMS Token ref 20-005618-468					
	Part No	Config No	Part No	Config No	Part No	Config No
Tower	SUB/5178	SGPGMGXX00242				
Wiper	MER/319	SGPGMGXX00240				
Wiper Spacer [1]	MER/042	SGPGMGXX00093				
Wiper Spacer [2]	MER/043	SGPGMGXX00157				
Wiper Spacer [3]	N/A					
Disc Unit	SUB/3121	SGPGMGXX00123				
Claw	MER/047	SGPGMGXX00234				
Claw Spacer [1]	MER/103	SGPGMGXX00231				
Claw Spacer [2]	N/A					
Claw Spacer [3]	N/A					
Bottom Spacer	MER/317	SGPGMGXX00241				
Bottom Spacer Packer	MER/296	SGPGMGXX00232				
Bottom Spacer Packer	MER/303	SGPGMGXX00229				
Bottom Spacer Packer	N/A					
Regulator	MER/057	SGPGMGXX00224				
Yoke Spacer	PBL/108	SGPGMGXX00018				
Yoke Spacer	PBL/1004	SGPGMGXX00016				
Yoke Spacer	PBL/1006	SGPGMGXX00017				
Yoke Spacer	PBL/1010	SGPGMGXX00019				
Yoke Spacer	N/A					
Yoke Spacer Label	LAB/384	SGPGMGXX00079				
Horseshoe	MER/021	SGPGMGXX00021				
Label	TPL/033	SGPGMGXX00225				

Table 10: Build Conversion 7

Conversion Kits for Paytrak Hopper for WMS						
	Build No4					
	A		B		C	
Description	Kit No P- 4A		Kit No P- 4B		Kit No P- 4C	
Sub No			SUB/8029		SUB/8030	
Configured No			GT205N4B00001		GT205N4C00001	
Production Test Coin			5 Kroner Coin [Sweden]		\$0.50 Coin [U.S]	
	Part No	Config No	Part No	Config No	Part No	Config No
Tower			SUB/5521	SGPGMGXX00243	SUB/5522	SGPGMGXX00244
Wiper			MER/315	SGPGMGXX00245	MER/315	SGPGMGXX00245
Wiper Spacer [1]			MMC/095	SGPGMGXX00071	MER/043	SGPGMGXX00157
Wiper Spacer [2]			N/A		MER/043	SGPGMGXX00157
Wiper Spacer [3]			N/A		N/A	
Disc Unit			SUB/5249	SGPGMGXX00264	SUB/5250	SGPGMGXX00265
Claw			MER/327	SGPGMGXX00246	MER/327	SGPGMGXX00246
Claw Spacer [1]			MER/101	GP2SPSXX00014	MER/102	SGPGMGXX00228
Claw Spacer [2]			N/A		MER/099	
Claw Spacer [3]			N/A		N/A	
Bottom Spacer			MER/318	SGPGMGXX00247	MER/318	SGPGMGXX00247
Bottom Spacer Packer			MER/296	SGPGMGXX00232	MER/303	SGPGMGXX00229
Bottom Spacer Packer			N/A		N/A	
Bottom Spacer Packer			N/A		N/A	
Regulator			MER/057	SGPGMGXX00224	MER/057	SGPGMGXX00224
Yoke Spacer			PBL/108	SGPGMGXX00018	PBL/108	SGPGMGXX00018
Yoke Spacer			PBL/1004	SGPGMGXX00016	PBL/1004	SGPGMGXX00016
Yoke Spacer			PBL/1006	SGPGMGXX00017	PBL/1006	SGPGMGXX00017
Yoke Spacer			PBL/1010	SGPGMGXX00019	PBL/1010	SGPGMGXX00019
Yoke Spacer			N/A		N/A	
Yoke Spacer Label			LAB/384	SGPGMGXX00079	LAB/384	SGPGMGXX00079
Horseshoe			MER/021	SGPGMGXX00021	MER/021	SGPGMGXX00021
Label			TPL/033	SGPGMGXX00225	TPL/033	SGPGMGXX00225

Table 11: Build Conversion 8

Conversion Kits for Paytrak Hopper for WMS						
	Build No4					
	D		E		F	
Description	Kit No P- 4D		Kit No P- 4E		Kit No P- 4F	
Sub No						
Configured No						
Production Test Coin						
	Part No	Config No	Part No	Config No	Part No	Config No
Tower						
Wiper						
Wiper Spacer [1]						
Wiper Spacer [2]						
Wiper Spacer [3]						
Disc Unit						
Claw						
Claw Spacer [1]						
Claw Spacer [2]						
Claw Spacer [3]						
Bottom Spacer						
Bottom Spacer Packer						
Bottom Spacer Packer						
Bottom Spacer Packer						
Regulator						
Yoke Spacer						
Yoke Spacer						
Yoke Spacer						
Yoke Spacer						
Yoke Spacer						
Yoke Spacer Label						
Horseshoe						
Label						

Table 12: Build Conversion 9

Conversion Kits for Paytrak Hopper for WMS						
	Build No5					
	A		B		C	
Description	Kit No P- 5A		Kit No P- 5B		Kit No P- 5C	
Sub No			SUB/8035		SUB/8036	
Configured No			GT205N5B00001		GT205N5C00001	
Production Test Coin			\$0.50 Token		MC ref. 747 [\$0.50 Token]	
	Part No	Config No	Part No	Config No	Part No	Config No
Tower			SUB/5239	SGPGMGXX00248	SUB/5241	SGPGMGXX00249
Wiper			MER/315	SGPGMGXX00245	MER/315	SGPGMGXX00245
Wiper Spacer [1]			MMC/140	SGPGMGXX00071	MMC/139	SGPGMGXX00250
Wiper Spacer [2]			N/A		MMC/139	SGPGMGXX00250
Wiper Spacer [3]			N/A		N/A	
Disc Unit			SUB/3560	SGPGMGXX00049	SUB/3173	SGPGMGXX00128
Claw			MER/047	SGPGMGXX00234	MER/047	SGPGMGXX00234
Claw Spacer [1]			MER/101	GP2SPSXX00014	MER/102	SGPGMGXX00228
Claw Spacer [2]			N/A		MER/099	SGPGMGXX00221
Claw Spacer [3]			N/A		N/A	
Bottom Spacer			MER/326	SGPGMGXX00251	MER/326	SGPGMGXX00251
Bottom Spacer Packer			MER/296	SGPGMGXX00232	MER/303	SGPGMGXX00229
Bottom Spacer Packer			N/A		N/A	
Bottom Spacer Packer			N/A		N/A	
Regulator			MER/060	SGPGMGXX00252	MER/060	SGPGMGXX00252
Yoke Spacer			PBL/108	SGPGMGXX00018	PBL/108	SGPGMGXX00018
Yoke Spacer			PBL/1001	SGPGMGXX00091	PBL/1001	SGPGMGXX00091
Yoke Spacer			PBL/1006	SGPGMGXX00017	PBL/1006	SGPGMGXX00017
Yoke Spacer			PBL/1008	SGPGMGXX00034	PBL/1008	SGPGMGXX00034
Yoke Spacer			PBL/1011	SGPGMGXX00092	PBL/1011	SGPGMGXX00092
Yoke Spacer Label			LAB/383	SGPGMGXX00085	LAB/383	SGPGMGXX00085
Horseshoe			MER/013	SGPGMGXX00031	MER/013	SGPGMGXX00031
Label			TPL/033	SGPGMGXX00225	TPL/033	SGPGMGXX00225

Table 13: Build Conversion 10

Conversion Kits for Paytrak Hopper for WMS						
	Build No5					
	D		E		F	
Description	Kit No P- 5D		Kit No P- 5E		Kit No P- 5F	
Sub No	SUB/8037					
Configured No	GT205N5D00001					
Production Test Coin	\$0.50 Coin [Australia]					
	Part No	Config No	Part No	Config No	Part No	Config No
Tower	SUB/5242	SGPGMGXX00253				
Wiper	MER/315	SGPGMGXX00245				
Wiper Spacer [1]	MMC/138	SGPGMGXX00254				
Wiper Spacer [2]	MMC/139	SGPGMGXX00250				
Wiper Spacer [3]	N/A					
Disc Unit	SUB/3173	SGPGMGXX00128				
Claw	MER/047	SGPGMGXX00234				
Claw Spacer [1]	MER/103	SGPGMGXX00231				
Claw Spacer [2]	N/A					
Claw Spacer [3]	N/A					
Bottom Spacer	MER/326	SGPGMGXX00251				
Bottom Spacer Packer	MER/296	SGPGMGXX00232				
Bottom Spacer Packer	MER/303	SGPGMGXX00229				
Bottom Spacer Packer	N/A					
Regulator	MER/060	SGPGMGXX00252				
Yoke Spacer	PBL/108	SGPGMGXX00018				
Yoke Spacer	PBL/1001	SGPGMGXX00091				
Yoke Spacer	PBL/1006	SGPGMGXX00017				
Yoke Spacer	PBL/1008	SGPGMGXX00034				
Yoke Spacer	PBL/1011	SGPGMGXX00092				
Yoke Spacer Label	LAB/383	SGPGMGXX00085				
Horseshoe	MER/013	SGPGMGXX00031				
Label	TPL/033	SGPGMGXX00225				

Table 14: Build Conversion 11

Conversion Kits for Paytrak Hopper for WMS						
	Build No6					
	A		B		C	
Description	Kit No P- 6A		Kit No P- 6B		Kit No P- 6C	
Sub No					SUB/8042	
Configured No					GT205N6C00001	
Production Test Coin					\$1 Token	
	Part No	Config No	Part No	Config No	Part No	Config No
Tower					SUB/4745	SGPGMGXX00259
Wiper					MER/112	SGPGMGXX00256
Wiper Spacer [1]					MER/044	SGPGMGXX00082
Wiper Spacer [2]					MER/045	SGPGMGXX00084
Wiper Spacer [3]					N/A	
Disc Unit					SUB/3191	SGPGMGXX00040
Claw					MER/059	SGPGMGXX00257
Claw Spacer [1]					MER/102	SGPGMGXX00228
Claw Spacer [2]					N/A	
Claw Spacer [3]					N/A	
Bottom Spacer					MER/019	SGPGMGXX00258
Bottom Spacer Packer					N/A	
Bottom Spacer Packer					N/A	
Bottom Spacer Packer					N/A	
Filler Piece Extension					MER/169	SGPGMGXX00078
Regulator					MER/060	SGPGMGXX00252
Yoke Spacer					PBL/108	SGPGMGXX00018
Yoke Spacer					PBL/1008	SGPGMGXX00034
Yoke Spacer					PBL/1012	SGPGMGXX00020
Yoke Spacer					N/A	
Yoke Spacer					N/A	
Yoke Spacer Label					LAB/382	SGPGMGXX00080
Horseshoe					MER/013	SGPGMGXX00031
Label					TPL/033	SGPGMGXX00225

Table 15: Build Conversion 12

Conversion Kits for Paytrak Hopper for WMS						
	Build No6					
	D		E		F	
Description	Kit No P- 6D		Kit No P- 6E		Kit No P- 6F	
Sub No	SUB/8043					
Configured No	GT205N6D00001					
Production Test Coin	\$1 Token					
	Part No	Config No	Part No	Config No	Part No	Config No
Tower	SUB/4917	SGPGMGXX00255				
Wiper	MER/112	SGPGMGXX00256				
Wiper Spacer [1]	MER/044	SGPGMGXX00082				
Wiper Spacer [2]	MER/044	SGPGMGXX00082				
Wiper Spacer [3]	N/A					
Disc Unit	SUB/2579	SGPGMGXX00013				
Claw	MER/059	SGPGMGXX00257				
Claw Spacer [1]	MER/103	SGPGMGXX00231				
Claw Spacer [2]	N/A					
Claw Spacer [3]	N/A					
Bottom Spacer	MER/019	SGPGMGXX00258				
Bottom Spacer Packer	MER/296	SGPGMGXX00232				
Bottom Spacer Packer	N/A					
Bottom Spacer Packer	N/A					
Filler Piece Extension	MER/169	SGPGMGXX00078				
Regulator	MER/060	SGPGMGXX00252				
Yoke Spacer	PBL/108	SGPGMGXX00018				
Yoke Spacer	PBL/1008	SGPGMGXX00034				
Yoke Spacer	PBL/1012	SGPGMGXX00020				
Yoke Spacer	N/A					
Yoke Spacer	N/A					
Yoke Spacer Label	LAB/382	SGPGMGXX00080				
Horseshoe	MER/013	SGPGMGXX00031				
Label	TPL/033	SGPGMGXX00225				

Table 16: Build Conversion 13

Conversion Kits for Paytrak Hopper for WMS						
	Build No9					
	A		B		C	
Description	Kit No P- 9A		Kit No P- 9B		Kit No P- 9C	
Sub No			SUB/5545			
Configured No			GT205N9B00001			
Production Test Coin			10c Euro Coin			
	Part No	Config No	Part No	Config No	Part No	Config No
Tower			SUB/5389	SGPGMGXX00329		
Wiper			MER/344	SGPGMGXX00330		
Wiper Spacer [1]			MMC/095	SGPGMGXX00071		
Wiper Spacer [2]			N/A			
Wiper Spacer [3]			N/A			
Disc Unit			SUB/3935	SGPGMGXX00178		
Claw			MER/077	GP2SPSXX00016		
Claw Spacer [1]			MER/101	SGPGMGXX00014		
Claw Spacer [2]			N/A			
Claw Spacer [3]			N/A			
Bottom Spacer			MER/350	SGPGMGXX00331		
Bottom Spacer Packer			MER/296	SGPGMGXX00232		
Bottom Spacer Packer			N/A			
Bottom Spacer Packer			N/A			
Regulator			MER/057	SGPGMGXX00224		
Yoke Spacer			PBL/108	SGPGMGXX00018		
Yoke Spacer			PBL/1004	SGPGMGXX00016		
Yoke Spacer			PBL/1006	SGPGMGXX00017		
Yoke Spacer			PBL/1010	SGPGMGXX00019		
Yoke Spacer			N/A			
Yoke Spacer Label			LAB/384	SGPGMGXX00079		
Horseshoe			MER/021	SGPGMGXX00021		
Label			TPL/033	SGPGMGXX00225		

This manual is intended only to assist the reader in the use of this product and therefore Money Controls shall not be liable for any loss or damage whatsoever arising from the use of any information or particulars in, or any incorrect use of the product. Money Controls reserve the right to change product specifications on any item without prior notice.